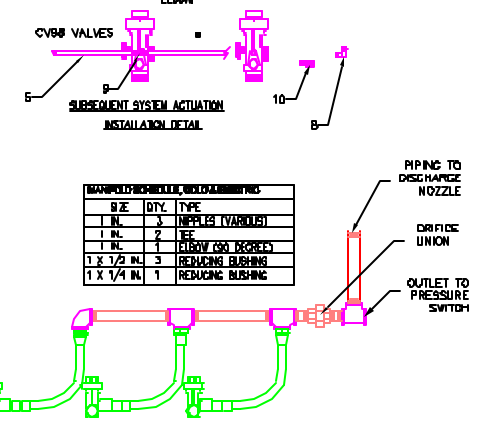
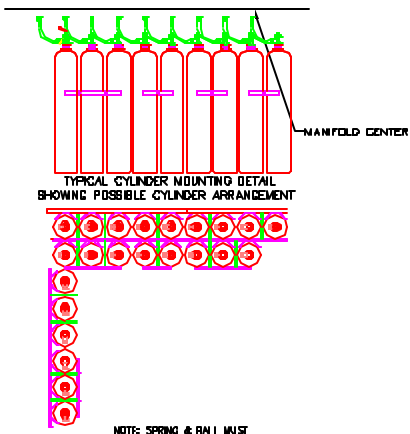
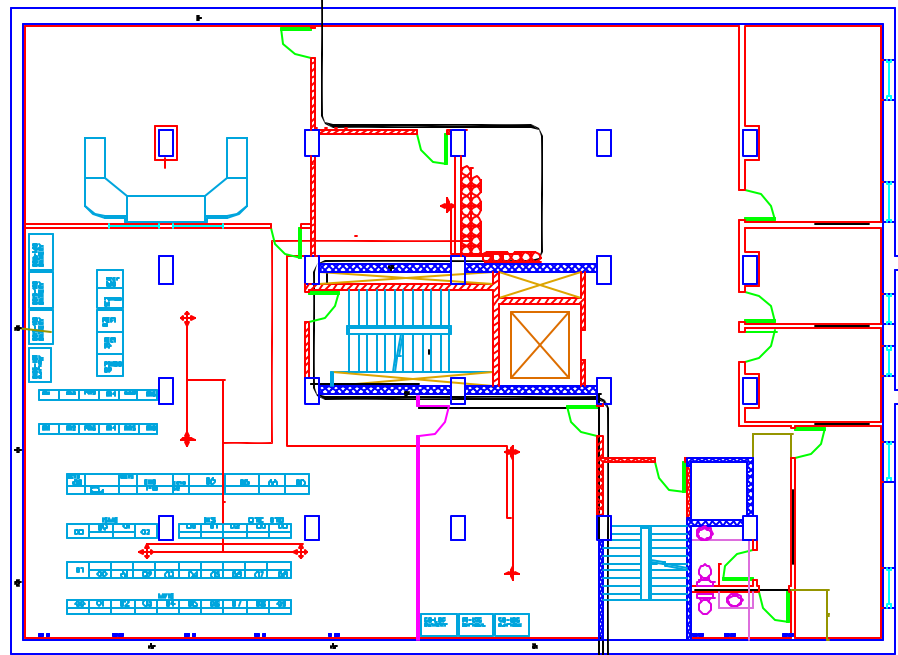
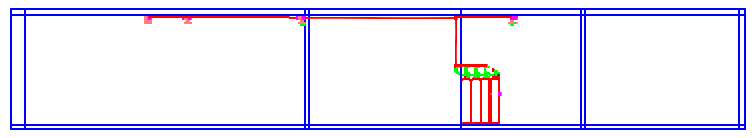


1 2 3 4 5 6 7 8 10 11 12 13 14 15 16 17 18 19 20 21 22 23 24 25 26 27 28 29 30 31 32 33 34

A
B
C
D
E
F
G
H
I
J
K
L
M
N
O
P
Q
R
S
T
U
V

COLOCATION INERGEN SYSTEM				ELECTRICAL ROOM INERGEN SYSTEM				MAIN SWITCH ROOM			
NOZZLE PERFORMANCE				NOZZLE PERFORMANCE				NOZZLE PERFORMANCE			
NOZZLE	FEET SEC	NOZZLE	CU FT DISCHARGED	NOZZLE	FEET SEC	NOZZLE	CU FT DISCHARGED	NOZZLE	FEET SEC	NOZZLE	CU FT DISCHARGED
1/2"	25	1/2"	1.2	1/2"	25	1/2"	1.2	1/2"	25	1/2"	1.2
3/4"	35	3/4"	2.7	3/4"	35	3/4"	2.7	3/4"	35	3/4"	2.7
1"	45	1"	6.2	1"	45	1"	6.2	1"	45	1"	6.2
1 1/4"	60	1 1/4"	15.7	1 1/4"	60	1 1/4"	15.7	1 1/4"	60	1 1/4"	15.7
2"	80	2"	35.6	2"	80	2"	35.6	2"	80	2"	35.6
2 1/2"	100	2 1/2"	78.6	2 1/2"	100	2 1/2"	78.6	2 1/2"	100	2 1/2"	78.6



SIZE	QTY	TYPE
1 IN	3	IMPELLER (VARIOUS)
1 IN	2	TEE
1 IN	1	ELBOW (90 DEGREE)
1 X 1/2 IN	3	REDUCING BUSHING
1 X 1/4 IN	1	REDUCING BUSHING

SIZE	QTY	TYPE
2 1/2 IN	1	PIPE (SEE NOTE BELOW)
2 1/2 IN	1	PISTON EXHAUST
1 1/2 IN	1	COUPLING FRAME
1/2 IN	1	COUPLING FRAME

- NOTES:
- PIPE O-LETS SHALL BE 2000 LB OR 3000 LB CLASS ANS B-16.1.
 - PIPE SHALL BE ASTM A-106 SEAMLESS GRADE C SCHEDULE 10A, ASTM A-106/A-33 SEAMLESS GRADE B OR GRADE A, ASTM A-33 ERW GRADE B. SCHEDULE 10A MAY ALSO BE USED.
 - A-120 PIPE SHALL NOT BE USED.
 - WHEN COMPLETE MANIFOLD SHALL BE HYDROSTATICALLY TESTED OR PRESSURE TESTED IN AN INERT GAS TO 100 PS.
 - THE MANIFOLD SHALL BE PRIMED WITH AN ENAMEL METAL PRIMER.
 - THE MANIFOLD SHALL BE FINISHED WITH FIRE RED PAINT.

ITEM	QTY	NUMBER	DESCRIPTION
1	3	428500	1.5-300 CU. FT. CYLINDER W/ CLOS VALVE
2	30	428650	1.5-300 CU. FT. CYLINDER W/ CLOS VALVE
3	23	342424	FLEXIBLE DISCHARGE BEND
4	2	428684	CV-3M ELECTRIC ACTUATOR
5	4	804869	1/2" ACTIVATION HOSE
6	2	803335	20" ACTIVATION HOSE
7	1	803376	24" ACTIVATION HOSE
8	3	831810	MALE ELBOW
9	3	418398	MALE TEE
10	10	828388	PISTON VALVE ADAPTER
11	2	818478	1" NPT ORRICE UNION
12	1	812037	3/2" NPT ORRICE NIPPLE
13	2	846750	PNEUMATIC SWITCH
14	7	418288	WARNING PLATE - INSIDE W/ ALARM
15	8	418288	WARNING PLATE - OUTSIDE W/ ALARM
16	2	417383	3/4" NPT INERGEN NOZZLE
17	1	428742	1" INERGEN NOZZLE 120 DEGREE
18	4	417383	1 1/4" INERGEN NOZZLE 300 DEGREE
19	2	417211	3/4" INERGEN DEFLECTOR SHIELD
20	1	417211	1" INERGEN DEFLECTOR SHIELD
21	4	417217	1 1/4" INERGEN DEFLECTOR SHIELD
22	1	870638	BACK FRAME ASSY. (3 CYLINDER)
23	3	870640	BACK FRAME ASSY. (4 CYLINDER)
24	2	870641	BACK FRAME ASSY. (5 CYLINDER)
25	4	832293	2" CARRIAGE BOLT & NUT (OBL. ROW 300, 425)
26	1	836881	CYLINDER CLAMP (2 CYLINDER)
27	1	836882	CYLINDER CLAMP (3 CYLINDER)
28	1	836885	DOUBLE BRACKET FOOT (LEFT SIDE)
29	1	836886	DOUBLE BRACKET FOOT (RIGHT SIDE)

- INSTALLATION NOTES FOR INERGEN SYSTEM**
- THESE SPECIFICATIONS ARE TO APPLY TO ALL INSTALLATIONS OF INERGEN FIRE SUPPRESSION SYSTEMS.
- NOTE: PIPE SHALL CONFORM TO ASTM SPECIFICATIONS FOR A53 OR A106 PIPE. A120 SHALL NOT BE USED.
- ALL THREADED PIPE BEYOND THE ORRICE UNION TO BE BLACK OR GALVANIZED STEEL OF THE FOLLOWING PIPE SIZE AND GRADE COMBINATIONS.

ASTM A-106 SEAMLESS, GRADE C	SO-L 40-THRU 6"
ASTM A-106/A-53 SEAMLESS, GRADE B	SO-L 40-THRU 6"
ASTM A-106/A-53 SEAMLESS, GRADE A	SO-L 40-THRU 2.5"
ASTM A-53 ERW, GRADE B	SO-L 40-THRU 5"
ASTM A-53 ERW, GRADE A	SO-L 40-THRU 1.25"
 - ALL THREADED PIPE USED TO CONSTRUCT THE MANIFOLD, INCLUDING PIPE BEFORE THE ORRICE UNION TO BE BLACK OR GALVANIZED STEEL OF THE FOLLOWING PIPE SIZE AND GRADE COMBINATIONS.

ASTM A-106 SEAMLESS, GRADE C	SO-L 80-THRU 2.5"
ASTM A-106/A-53 SEAMLESS, GRADE B	SO-L 80-THRU 1.25"
ASTM A-106/A-53 SEAMLESS, GRADE A	SO-L 80-THRU .75"
ASTM A-53 ERW, GRADE B	SO-L 80-THRU 1.0"
ASTM A-53 ERW, GRADE A	SO-L 80-THRU .5"
 - PIPE GRADES MUST BE SUITABLE FOR THE PRESSURES CALCULATED BY ANSUL'S MERCALC PNEUMATIC CALCULATION PROGRAM. CONSULT THE CHART IN ANSUL'S DESIGN MANUAL OR NFPA 2001, A-2.2.1, FOR MAXIMUM PIPE PRESSURES FOR THE DIFFERENT PIPE GRADES.
 - ALL FITTINGS BEYOND THE ORRICE UNION TO BE 3000 ANSI B-16.3 BLACK OR GALVANIZED MALLEABLE IRON THREADED FITTINGS THROUGH 3" SIZE. FORGED STEEL FITTINGS TO BE USED FOR LARGER SIZES. FLANGED JOINTS TO BE CLASS 600 LB. CLASS 300 MALLEABLE IRON UNIONS OR STREET ELBOWS SHALL NOT BE USED.
 - ALL FITTINGS USED TO CONSTRUCT THE MANIFOLD, INCLUDING FITTINGS BEFORE THE ORRICE UNION TO BE BLACK OR GALVANIZED FORGED STEEL 2000# OR 3000# ANSI B-16.3.
 - ALL PIPE, FITTINGS AND MANIFOLDS TO BE SUPPLIED BY INTERSTATE FIRE PROTECTION.
 - PIPE LENGTHS GIVEN ARE FROM CENTER TO CENTER OF FITTINGS.
 - ALL DIMENSIONS ARE TO BE FIELD CHECKED, ANY DEVIATIONS FROM THE ARRANGEMENT SHOWN WILL REQUIRE COMPLETE REVIEW OF THE NOZZLE AND LINE PRESSURE CALCULATIONS BY THE DESIGNER.
 - REAM AND CLEAN EACH PIPE SECTION INTERNALLY AFTER PREPARATION AND BEFORE ASSEMBLY BY MEANS OF SWABING, UTILIZING A SUITABLE NON-FLAMMABLE CLEANER. THE PIPING NETWORK SHALL BE FREE OF PARTICULATE MATTER AND OIL RESIDUE BEFORE INSTALLATION OF NOZZLES OR DISCHARGE DEVICES.
 - THE USE OF PIPE DOPP OR TEFLON TAPE IS RECOMMENDED. APPLY SPARINGLY TO MALE THREADS ONLY.
 - CYLINDERS AND PIPE TO BE SECURELY BRACKETED-ESPECIALLY AT FITTINGS AND NOZZLES.
 - ALL DEAD END PIPE LINES TO BE PROVIDED WITH A CAPPED NIPPLE 2" LONG.

System Information:
 INERGEN FIRE SUPPRESSION SYSTEM
 COLO, ELECTRIC ROOM AND SWITCH ROOMS

Client:
 LIGHTSHIP TELECOM
 340 CUMBERLAND AVE.
 SECOND FLOOR
 PORTLAND, ME.

Interstate FIRE PROTECTION
 PO BOX 1005
 N. CONWAY, NH 03860
 57 CONY STREET
 AUGUSTA, ME. 04330

DATE	BY	DESCRIPTION
04/03/01	DR	DATE
04/24/01	DR	DATE
REV. 1	DR	REV. 1

SHEET :
 M-1