

HYDRAULIC-SYSTEM

THIS BUILDING IS PROTECTED BY A HYDRAULICALLY DESIGNED AUTOMATIC SPRINKLER SYSTEM.

LOCATION: 24 PREBLE ST.

NO. OF SPRINKLERS: 18
(CALCULATED)

BASIS OF DESIGN:

- DENSITY (GPM/SQ.FT.) .1
- DESIGNED AREA OF DISCHARGE (SQ.FT.) 984

SYSTEM DEMAND:

- WATER FLOW RATE (GPM) 356.6
- RESIDUAL PRESSURE AT THE BASE OF THE RISER 65.322 (PSI)

FIRE SPRINKLER PLAN - SECOND FLOOR

SCALE: 1/8"=1'-0"

AREA PROTECTED: 3,650 SQ.FT.

FINISH FLOOR ELEVATION : 122.42'

COLOR CODE: RED

Second Floor Sprinkler Head Schedule

Symbol	Count	Thread	K-Factor	Description	Note
⊙	16	1/2"	5.6	RELIABLE F1FR56 SIN #RA1414 QUICK RESPONSE 200" WHITE RECESSED PENDENT	on Drop
○	17	1/2"	5.6	RELIABLE F1FR56 SIN #RA1425 QUICK RESPONSE 200" BRASS UPRIGHT	on Line
⊙	1	1/2"	5.6	RELIABLE F1FR56 SIN #RA1425 QUICK RESPONSE 200" BRASS UPRIGHT	on Sprig
◁	3	1/2"	5.6	RELIABLE F1FR56 SIN #RA1435 QUICK RESPONSE 200" WHITE RECESSED HORIZONTAL SIDEWALL	on Line

37 = Total Number of Heads This Floor

HYDRAULIC-SYSTEM

THIS BUILDING IS PROTECTED BY A HYDRAULICALLY DESIGNED AUTOMATIC SPRINKLER SYSTEM.

LOCATION: 24 PREBLE ST.

NO. OF SPRINKLERS: 11
(CALCULATED)

BASIS OF DESIGN:

- DENSITY (GPM/SQ.FT.) .1
- DESIGNED AREA OF DISCHARGE (SQ.FT.) 957

SYSTEM DEMAND:

- WATER FLOW RATE (GPM) 274.3
- RESIDUAL PRESSURE AT THE BASE OF THE RISER 66.457 (PSI)

FIRE SPRINKLER PLAN - THIRD FLOOR

SCALE: 1/8"=1'-0"

AREA PROTECTED: 3,650 SQ.FT.

FINISH FLOOR ELEVATION : 134.42'

COLOR CODE: GREEN

Third Floor Sprinkler Head Schedule

Symbol	Count	Thread	K-Factor	Description	Note
⊙	25	1/2"	5.6	RELIABLE F1FR56 SIN #RA1414 QUICK RESPONSE 200" WHITE RECESSED PENDENT	on Drop
◁	5	1/2"	5.6	RELIABLE F1FR56 SIN #RA1435 QUICK RESPONSE 200" WHITE RECESSED HORIZONTAL SIDEWALL	on Line

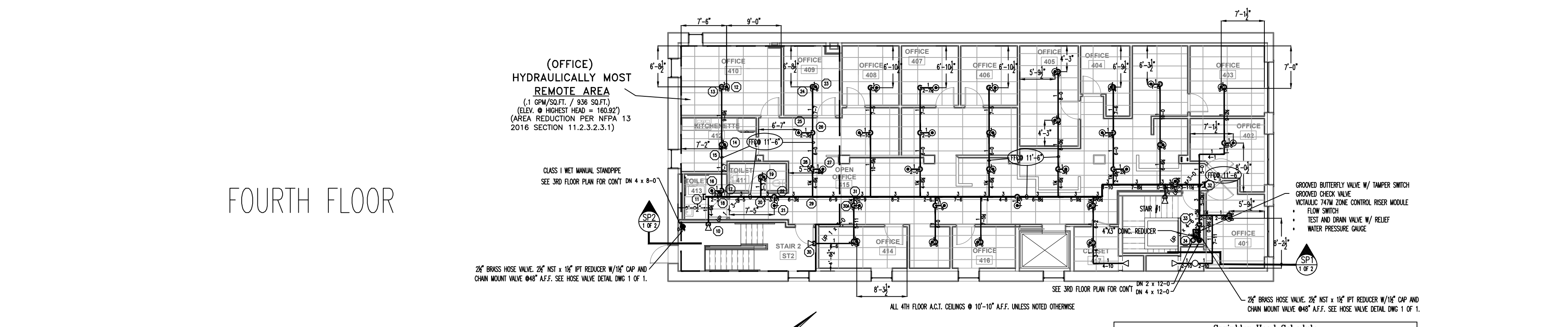
30 = Total Number of Heads This Floor

HYDRAULIC DATA NAMEPLATE

TO BE MOUNTED AT SYSTEM RISER

HYDRAULIC DATA NAMEPLATE

TO BE MOUNTED AT SYSTEM RISER



HYDRAULIC-SYSTEM

THIS BUILDING IS PROTECTED BY A HYDRAULICALLY DESIGNED AUTOMATIC SPRINKLER SYSTEM.

LOCATION: 24 PREBLE ST.

NO. OF SPRINKLERS: 10
(CALCULATED)

BASIS OF DESIGN:

- DENSITY (GPM/SQ.FT.) .1
- DESIGNED AREA OF DISCHARGE (SQ.FT.) 936

SYSTEM DEMAND:

- WATER FLOW RATE (GPM) 247.27
- RESIDUAL PRESSURE AT THE BASE OF THE RISER 69.73 (PSI)

FIRE SPRINKLER PLAN - FOURTH FLOOR

SCALE: 1/8"=1'-0"

AREA PROTECTED: 3,650 SQ.FT.

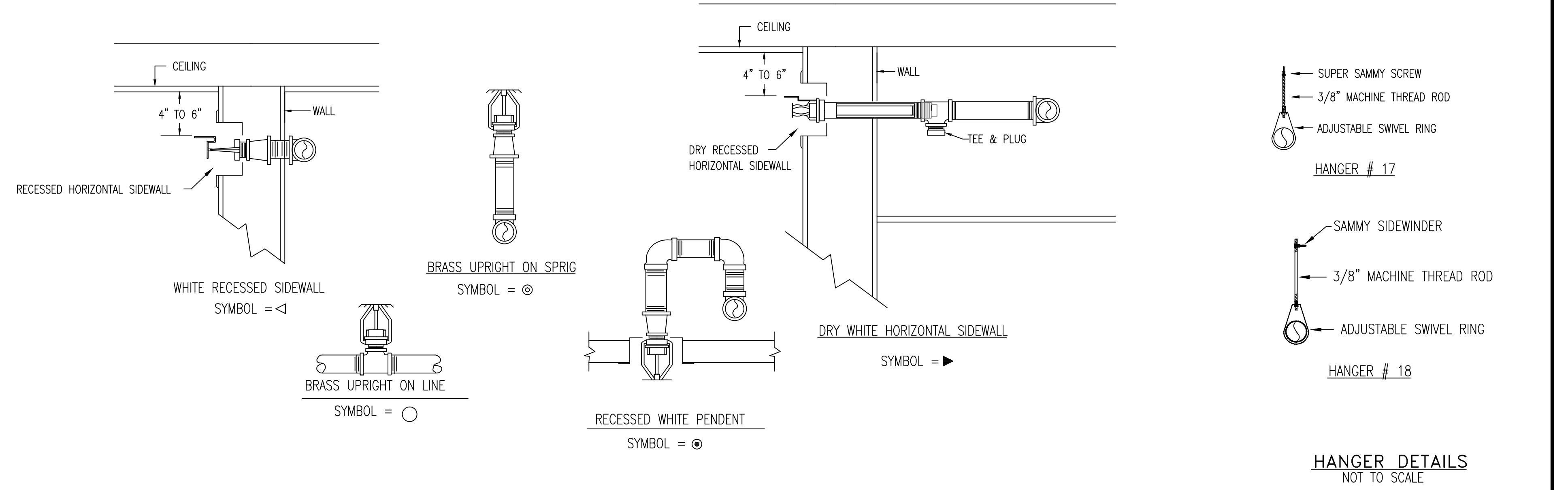
FINISH FLOOR ELEVATION : 148.42'

COLOR CODE: YELLOW

Sprinkler Head Schedule

Symbol	Count	Thread	K-Factor	Description	Note
⊙	10	1/2"	5.6	RELIABLE F1FR56 SIN #RA1414 QUICK RESPONSE 200" WHITE RECESSED PENDENT	on Drop
○	1	1/2"	5.6	RELIABLE F1FR56 SIN #RA1425 QUICK RESPONSE 200" BRASS UPRIGHT	on Line
◁	5	1/2"	5.6	RELIABLE F1FR56 SIN #RA1435 QUICK RESPONSE 200" WHITE RECESSED HORIZONTAL SIDEWALL	on Line

42 = Total Number of Heads This Floor



SPRINKLER HEAD DETAILS

NOT TO SCALE

HYDRAULIC DATA NAMEPLATE

TO BE MOUNTED AT SYSTEM RISER

GENERAL NOTES	DATE	REVISIONS	REQUIRED APPROVALS	FIRE SPRINKLER PLANS & DETAILS
SPRINKLER SYSTEM INSTALLATION TO COMPLY WITH NFPA PAMPHLET # 13 (2016)			OWNER STATE FIRE MARSHAL PORTLAND FIRE DEPARTMENT	24 PREBLE ST. PORTLAND, ME.
BRANCH LINE PIPING TO BE BLACK SCHEDULE 40 JOINED BY THREADED DUCTILE IRON FITTINGS			DRAWN BY NICET LEVEL I EWM CERT.#	DWG. NO. 2 OF 2
MAIN PIPING TO BE SCHEDULE # 10 BLACK WITH GROOVED ENDS & WELDED OUTLETS JOINED BY MECHANICAL COUPLINGS			CHECKED BY NICET LEVEL III GRD CERT.# 090388	JOB NUMBER 1-05602-SP-17
OWNER TO PROVIDE SUFFICIENT HEAT THROUGHOUT BUILDING TO PREVENT FREEZING OF WATER FILLED SPRINKLER PIPING AND EQUIPMENT. (MIN. 40°F)			CONTRACTOR LICENSE # 101 CONTRACTOR RMS # 291	SCALE AS SHOWN
				DATE 8/11/17

