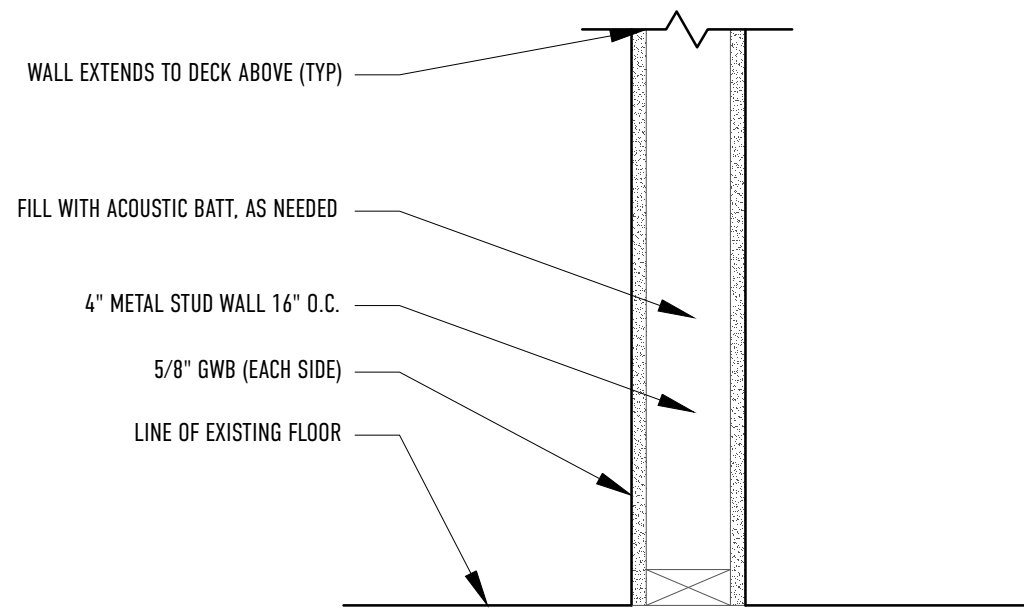


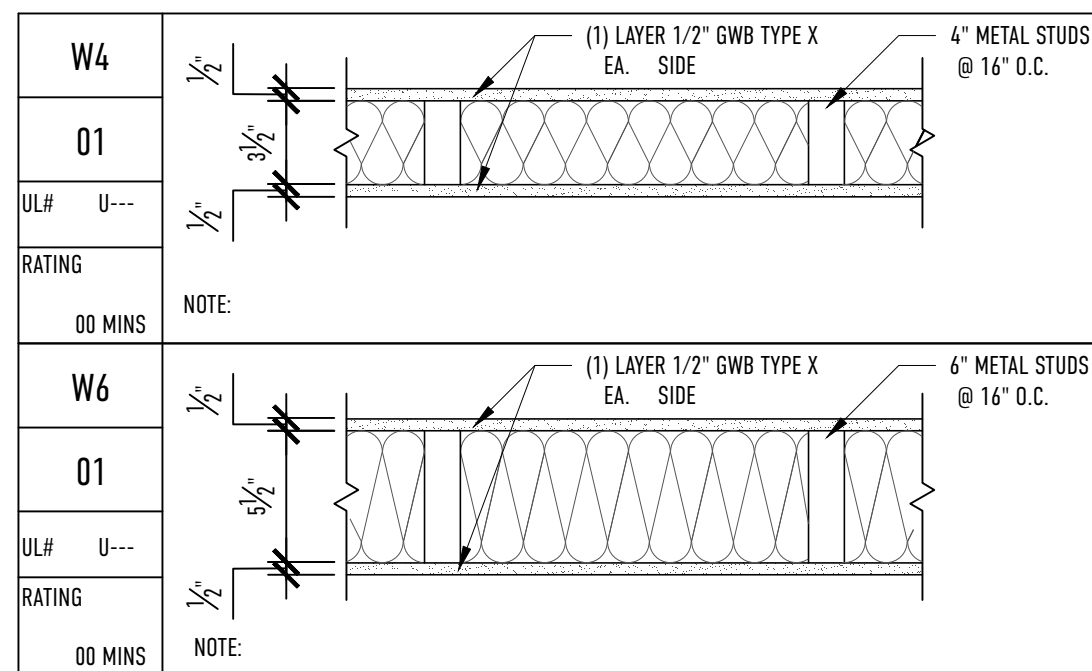
**NOTE:**  
1. MIN CORRIDOR WIDTH = 44" PER NFPA 12.2.3.8

HATCH INDICATES NEW PARTITION WALL SEE 2/A.101 FOR DETAILS, UNLESS OTHERWISE NOTED

**1 PLAN LAYOUT**  
1/4"=1'-0"



**2 TYPICAL PARTITION TYPE DETAIL**  
1/2"=1'-0"



**3 WALL TYPES**  
1/2"=1'-0"

**PLUMBING SCHEDULE**

QUANTITY	DESCRIPTION	MFG	MODEL	FINISH	NOTES
2	ELONGATED WATER CLOSET, FLUSH VALVE- ADA	TOTO	ENTRADA	COTTON	--
2	WALL HUNG LAVATORY-ADA, CONCEALED ARMS	KOHLER	K-2084-0	WHITE	--
2	SINGLE LEVER FAUCET	GROHE	CONCETTO	CHROME	--
4	HANDHELD AND SHOWER HEAD	GROHE	26124000	CHROME	--
4	PRESSURE BALANCE VALVE TIMSET	GROHE	CONCETTO	CHROME	--
1	WALL HUNG BI-LEVEL DRINKING FOUNTAIN	ELKAY	EDFPB117RAC	STAINLESS	--
2	GRAB BARS	ELKAY	EDFPB117RAC	STAINLESS	--

**NOTES:**  
1. REFER TO ARCHITECTURAL FLOOR PLANS FOR PLACEMENT.  
2. CONFIRM ALL INSTALL CLEARANCES TO MEET ADA REQUIREMENTS

**DOOR SCHEDULE**

MARK	LOCATION	DESCRIPTION	MODEL	WIDTH	HEIGHT	THICK	MATERIAL	HARDWARE	RATING	NOTES
101A	101	MASONITE	MELROSE	3'-0"	6'-8"	1 3/8"	HDF	PRIVACY		
102A	102	MASONITE	MELROSE	3'-0"	6'-8"	1 3/8"	HDF	PRIVACY		
103A	103	MASONITE	MELROSE	2'-6"	6'-8"	1 3/8"	HDF	PASSAGE		
104A	104	MASONITE	MELROSE	3'-0"	6'-8"	1 3/8"	HDF	PASSAGE		EXISTING CLOSET, GC TO VERIFY OPENING DIM
105A	105	MASONITE	BERKLEY	3'-0"	6'-8"	1 3/8"	HDF	PASSAGE		
105B	105	MASONITE	MELROSE	2'-6"	6'-8"	1 3/8"	HDF	PASSAGE		
106A	106	MASONITE	BERKLEY	3'-0"	6'-8"	1 3/8"	HDF	PASSAGE		
107A	107	MASONITE	BERKLEY	2'-6"	6'-8"	1 3/8"	HDF	PASSAGE		BIPARTING SLIDING (DOORS 107A+B)
107B	107	MASONITE	BERKLEY	2'-6"	6'-8"	1 3/8"	HDF	PASSAGE		
108A	108	MASONITE	MELROSE	2'-6"	6'-8"	1 3/8"	HDF	PASSAGE		
111A	111	EXISTING TO REMAIN							90 MIN	
ST01A	ST01	EXISTING TO REMAIN							90 MIN	
ST02A	ST02	EXISTING TO REMAIN							90 MIN	

**NOTES:**  
1. GENERAL CONTRACTOR SHALL CONFIRM ALL JAMB DEPTH DIMENSIONS PRIOR TO PLACING THE DOOR ORDER.  
2. ALL GLASS TO BE TEMPERED AS REQUIRED BY CODE.  
3. CONFIRM CLEAR OPENING DIMENSIONS AT ALL EXISTING EGRESS DOORS. VERIFY THEY MEET ANY ADA REQUIREMENTS.

**ROOM FINISH SCHEDULE**

NO.	ROOM NAME	FLOOR	BASE	WALLS				CEILING		NOTES
				NORTH	SOUTH	EAST	WEST	MATL	HGT	
101	WOMEN'S RESTROOM	FL1	BA1	WL1	WL1	WL1	WL1	C1	8'-0"	
102	MEN'S RESTROOM	FL1	BA1	WL1	WL1	WL1	WL1	C1	8'-0"	
103	STORAGE	FL1	BA1	WL1	WL1	WL1	WL1	C1	8'-0"	
104	EXISTING STORAGE	NA	NA	NA	NA	NA	NA	NA	NA	EXISTING CLOSET WILL REMAIN UNTOUCHED
105	MEN'S CHANGING ROOM	FL1	BA1	WL1	WL1	WL1	WL1	C1	8'-0"	
106	WMN'S CHANGING ROOM	FL1	BA1	WL1	WL1	WL1	WL1	C1	8'-0"	
105A	MEN'S SHOWER	FL4	BA2	WL1	WL1	WL1	WL1	C1	8'-0"	
106A	WMN'S SHOWER	FL4	BA2	WL1	WL1	WL1	WL1	C1	8'-0"	
107	YOGA STUDIO	FL3	NA	WL3	WL1	WL2	WL2	C2	10'-8"	
108	STORAGE	FL1	BA1	WL3	WL1	WL1	WL1	C1	8'-0"	
109	OPEN STUDIO	FL2	BA1	WL3	OPEN	WL1	WL1	C2	10'-8"	
110	STRETCHING AREA	FL2	BA1	OPEN	WL1	WL1	WL1	C2	10'-8"	
111	EXISTING ELECTRICAL CL	NA	NA	NA	NA	NA	NA	NA	NA	EXISTING CLOSET WILL REMAIN UNTOUCHED
112	LOUNGE	FL1	BA2	OPEN	WL1	WL1	WL1	C2	10'-8"	

**NOTES:**  
1. REFER TO ARCHITECTURAL FLOOR PLANS FOR EXTENTS.

**FINISH LEGEND**

NO.	DESCRIPTION
FL1	LVT, 36"x36"
FL2	RUBBER, 48"x25"
FL3	CYPRUS, CLEAR FINISH
FL4	PORCELAIN TILE, DARK PENNY ROUND
BA1	RESILIENT
BA2	PORCELAIN
WL1	GWB, PAINTED
WL2	CYPRUS, CLEAR FINISH
WL3	EXISTING BRICK
C1	ACT
C2	EXISTING TIN

DATE:

REVISIONS:

**A.101 | 2ND FLOOR PLAN**

DRAWING TITLE:

PROJECT NAME:  
SHIFT PORTLAND  
24 PREBLE ST.  
PORTLAND, MAINE 04101

DATE OF ISSUE:  
MARCH 29, 2017

ISSUED FOR:  
PERMITTING

SCALE:  
1/4"=1'-0"

THIS DRAWING IS THE PROPERTY OF  
BARRETT MADE AND IS NOT TO BE COPIED  
OR REPRODUCED IN PART OR WHOLE.  
2017 © BARRETT MADE

**BARRETT  
MADE**

HOUSES · SPACES · DETAILS