

24 PREBLE STREET
1ST FLOOR RENOVATIONS
PORTLAND, MAINE 04101

BURN
architecture for life
28 Maple St., Suite 202, Portland, ME 04101
207.774-8402

CONSULTANTS:

REVISIONS:

No.	Name	Date
5	REV 5	4/18/17

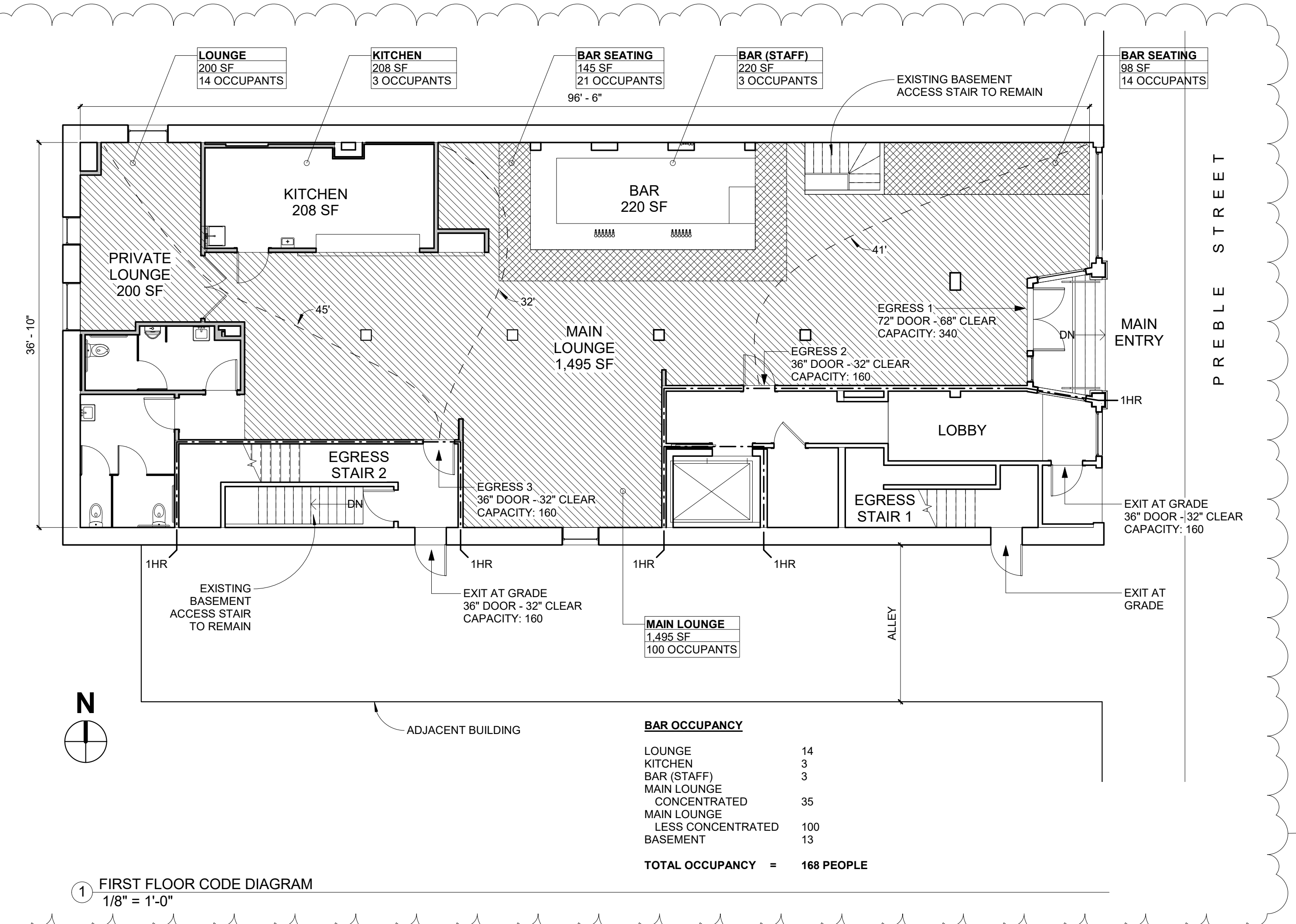
ISSUED: 2/24/17
PROJECT No: 1606
DRAWN BY: RIP
CHECKED BY: CHB
SHEET TITLE:
COVER SHEET

A001



24 PREBLE STREET - 1ST FLOOR RENOVATIONS

24 PREBLE STREET



PROJECT SUMMARY
INTERIOR RENOVATION OF EXISTING ARCADE BAR AND EXPANSION TO OCCUPY SPACE PREVIOUSLY USED AS OFFICE SPACE BY SEPARATE TENANT. NEW ARRANGEMENT WILL INCLUDE ONLY ONE TENANT ON FIRST FLOOR OF BUILDING.

NEW SPRINKLER SYSTEM WILL BE ADDED THROUGHOUT BUILDING TO COMPLY WITH NFPA 13.

IBC 2009 CODE REVIEW SUMMARY

CONSTRUCTION TYPE: III-B
USE & OCCUPANCY CLASSIFICATION (304.1)
ASSEMBLY GROUP A

OCCUPANCY LOAD (1016.1)
ASSEMBLY CONCENTRATED 7 SF/PERSON GROSS
ASSEMBLY UNCONCENTRATED 15 SF/PERSON GROSS

EXIT TRAVEL DISTANCE (1016.1)
300' WITH SPRINKLER SYSTEM

NUMBER OF EXITS (1021.1)
OCCUPANT LOAD 1-500 PER STORY; 2 INDEPENDENT EXITS

NFPA 101 CODE REVIEW SUMMARY

CONSTRUCTION TYPE (NFPA 220)
TYPE III 200

OCCUPANCY CLASSIFICATION (NFPA 101 6.1.2)
ASSEMBLY

SPRINKLER SYSTEM
FULLY SPRINKLED, SUPERVISED

OCCUPANT LOAD FACTORS (7.3.1.2)
ASSEMBLY CONCENTRATED 7 SF/PERSON
ASSEMBLY LESS CONCENTRATED 15 SF/PERSON

NUMBER OF MEANS OF EGRESS (7-4)
2

COMMON PATH OF TRAVEL (12.2.5.1.2)
20'

TRAVEL DISTANCE (12.2.6)
250' WITH SPRINKLER SYSTEM

EGRESS DOOR CAPACITY FACTOR
0.2

SYMBOL LEGEND

	DETAIL NUMBER
	BUILDING SECTION
	DRAWING NUMBER
	DETAIL NUMBER
	CALL OUT
	DRAWING NUMBER
	CENTERLINE
	DOOR TAG
	ELEVATION INDICATOR
	ELEVATION TAG
	ELEVATION TAG
	NORTH ARROW
	REVISION
	ROOM TAG WITH NUMBER
	STRUCTURAL GRID BUBBLE
	WALL TAG
	WINDOW TAG

DRAWING LIST

NUMBER	SHEET TITLE
A001	COVER SHEET
A100	BASEMENT PLAN
A101	FIRST FLOOR NEW WORK & DEMO PLANS
A102	DUCT CHASE LOCATIONS
A111	FIRST FLOOR RCP
A501	ENLARGED BATHROOM PLAN & ELEVATIONS
A502	ENLARGED KITCHEN PLAN & ELEVATIONS
A503	ENLARGED BAR PLAN & ELEVATIONS
A504	ENLARGED ENTRY PLAN & ELEVATIONS
A601	SCHEDULES