

24 PREBLE STREET
 24 PREBLE STREET
 PORTLAND, MAINE 04101

BR BURN
 architecture for life
 25 Maple St., Suite 202, Portland, ME 04101
 207-774-6942

CONSULTANTS:

REVISIONS:

No.	Name	Date

ISSUED: 09-14-16

PROJECT No: 1606

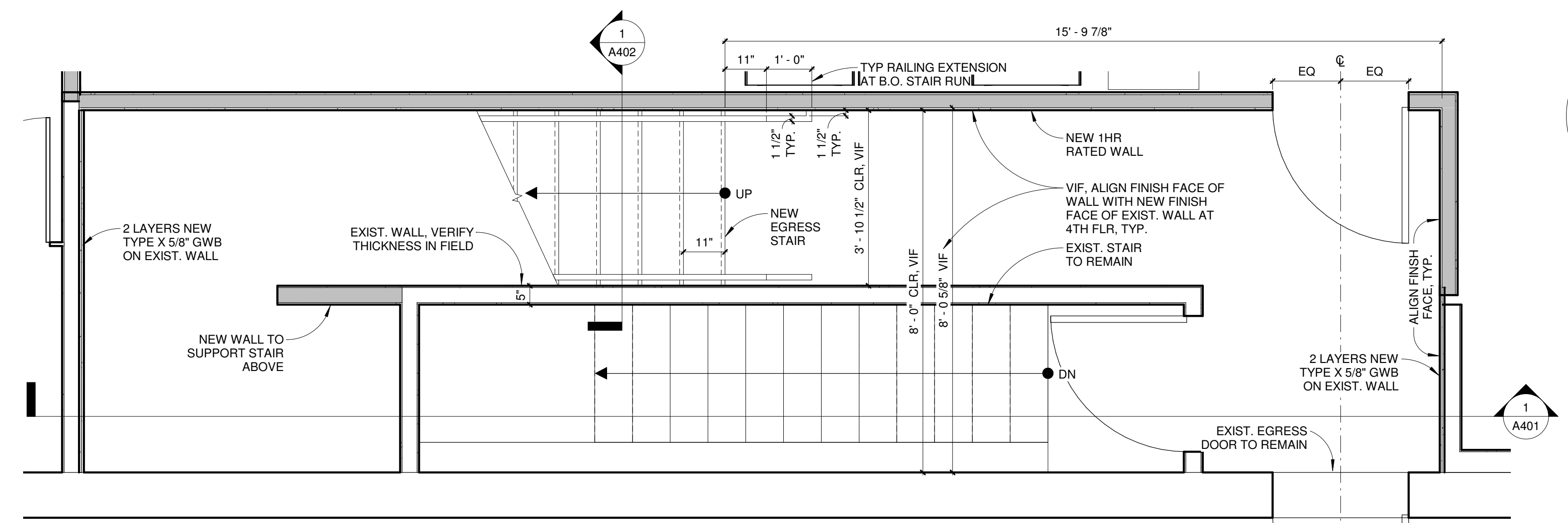
DRAWN BY: XXX

CHECKED BY: XXX

SHEET TITLE:

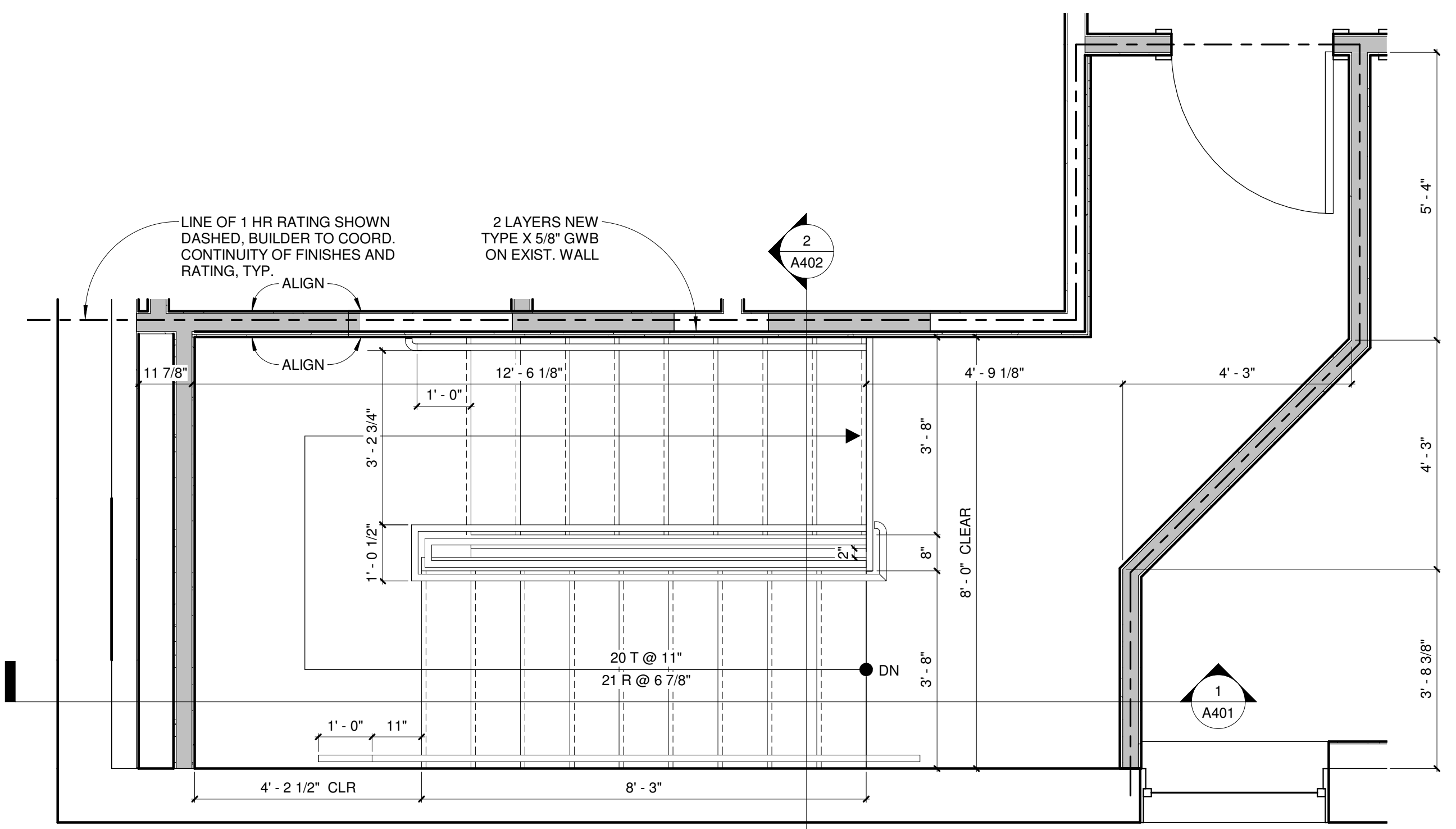
ENLARGED STAIR PLANS & SECTIONS

A401

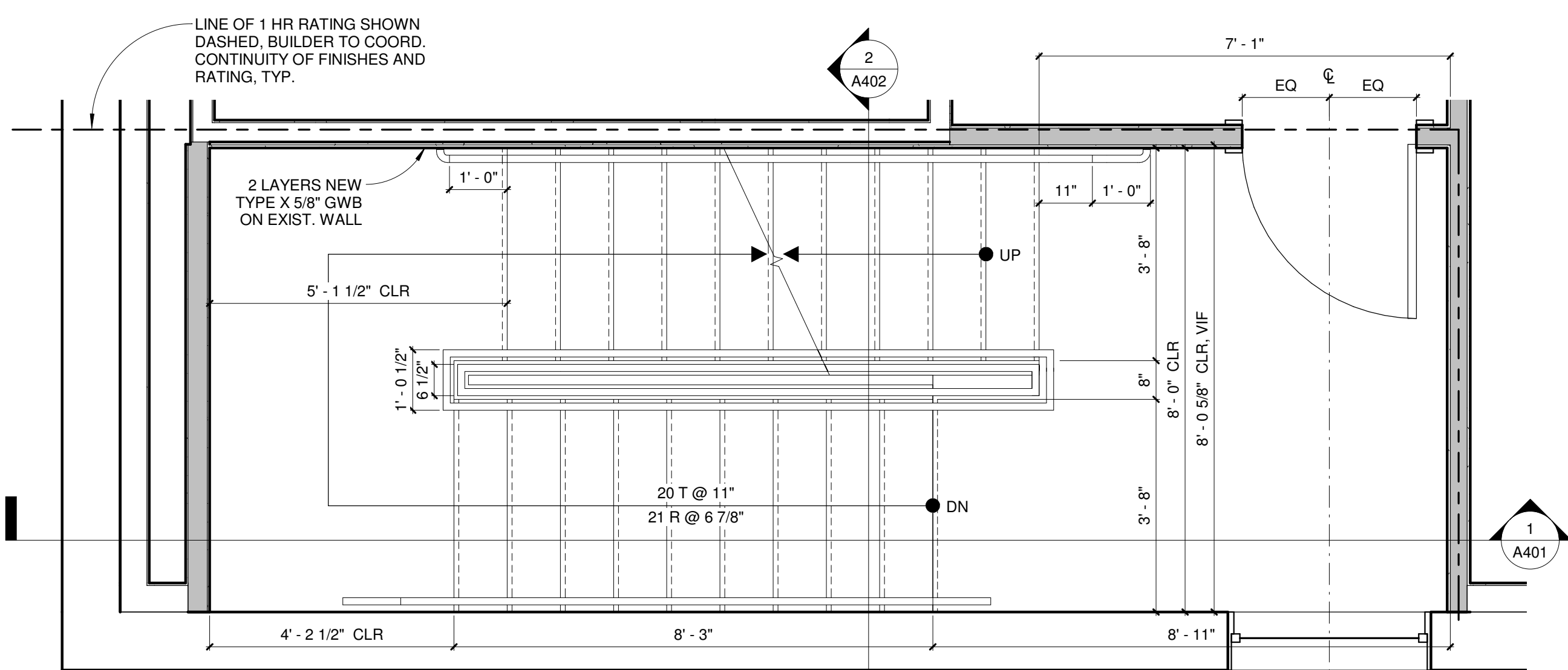


5 ENLARGED STAIR PLAN - 1ST FLOOR
 1/2" = 1'-0"

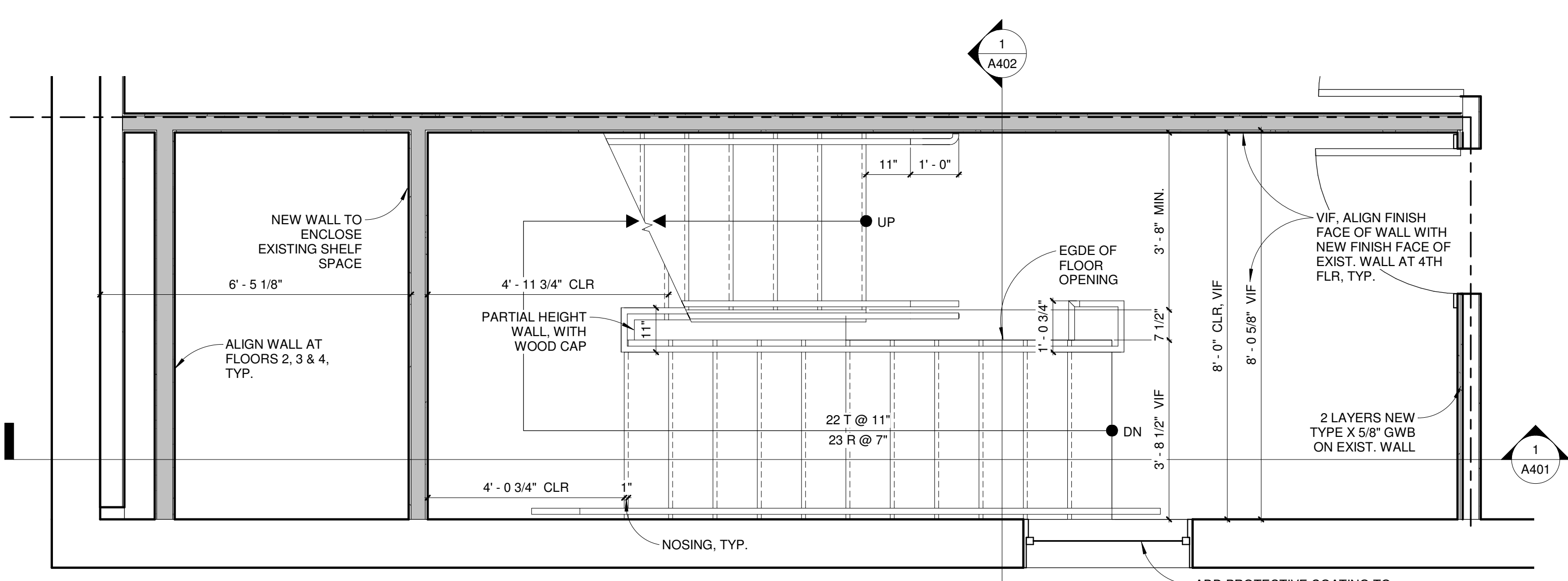
- GENERAL NOTES:**
1. ALIGN FACE OF FINISHES WHERE NEW WALLS ARE ADJACENT TO EXIST., TYP.
 2. 1 HR RATING TO BE CONTINUOUS AT NEW EGRESS STAIR, MODIFY EXIST. FINISHES AS REQ'D, TYP.
 3. COORDINATE RELOCATION OF EXIST. WIRING, PLUMBING, ROOF LEADERS, ETC. AS REQ'D IN FIELD.



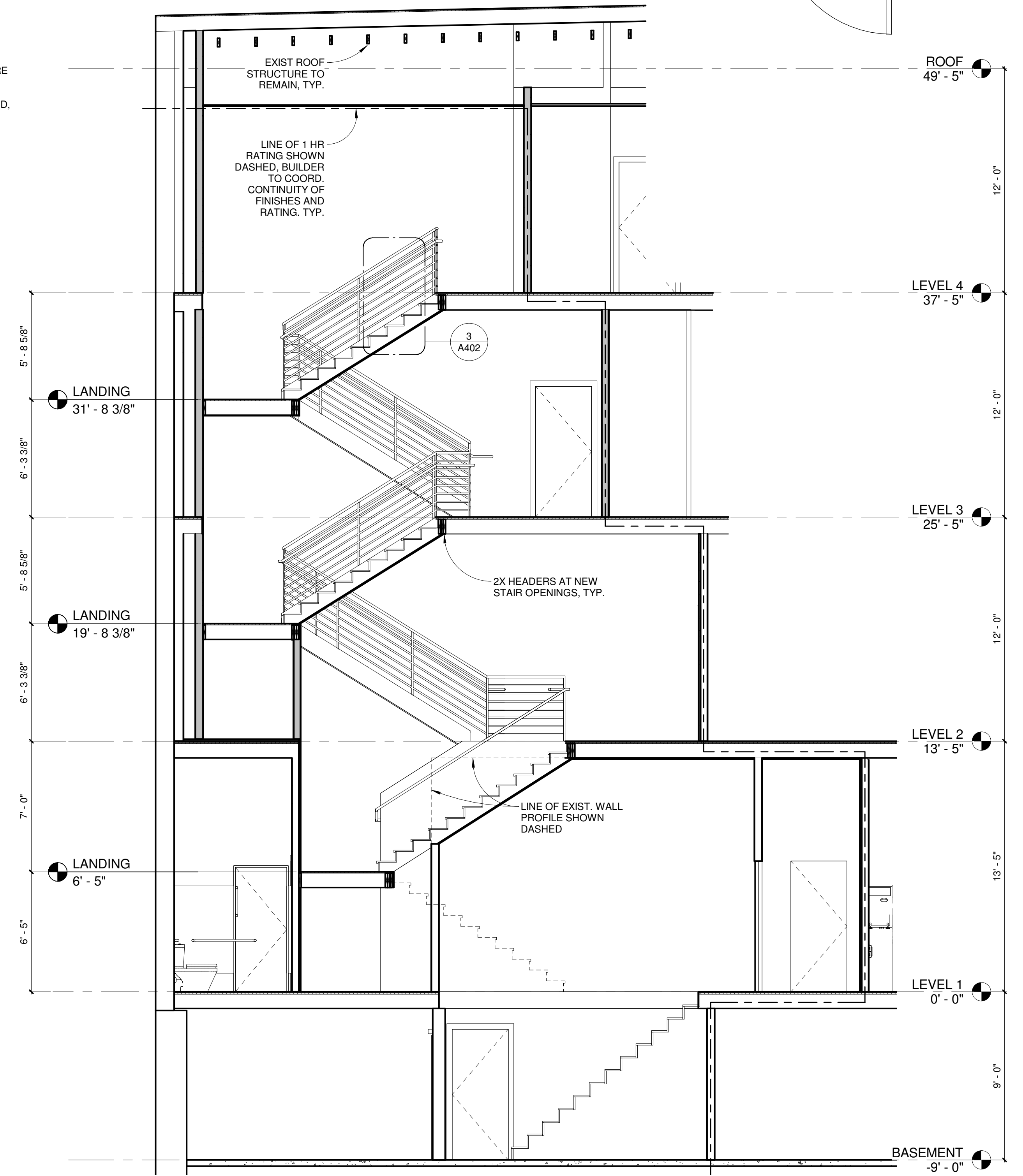
2 ENLARGED STAIR PLAN - 4TH FLOOR
 1/2" = 1'-0"



3 ENLARGED STAIR PLAN - 3RD FLOOR
 1/2" = 1'-0"



4 ENLARGED STAIR PLAN - 2ND FLOOR
 1/2" = 1'-0"



1 STAIR SECTION
 1/4" = 1'-0"