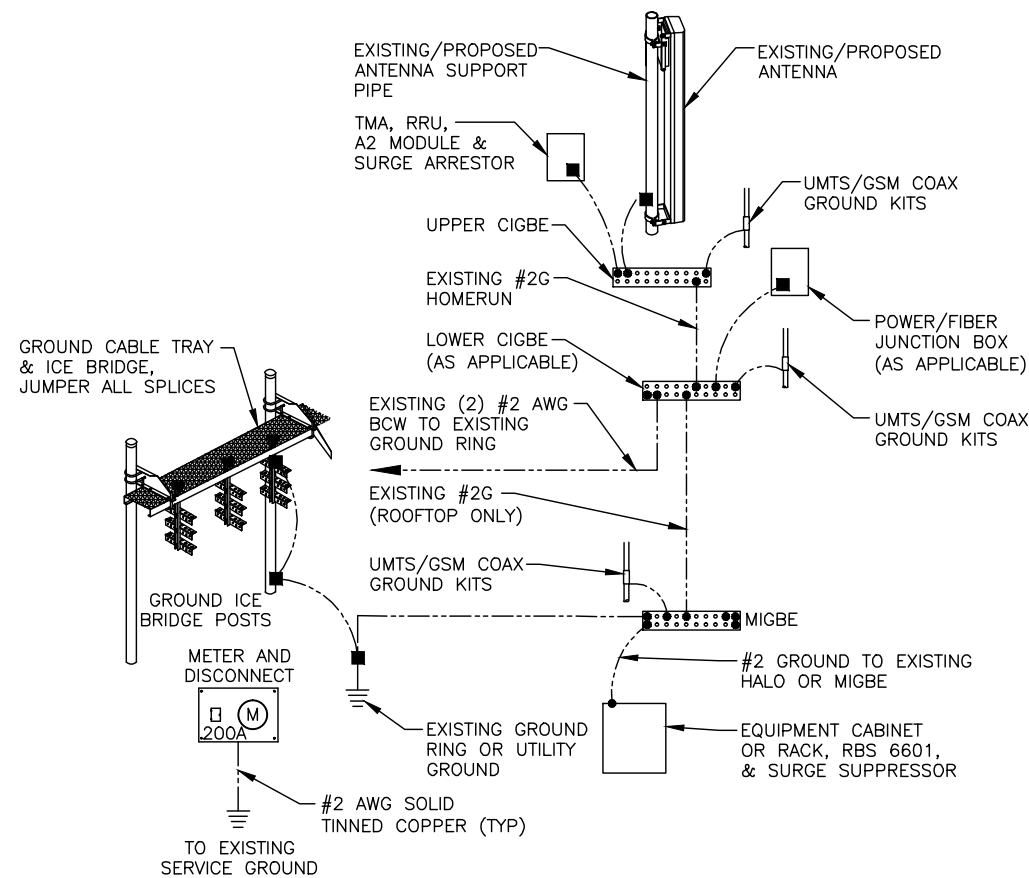
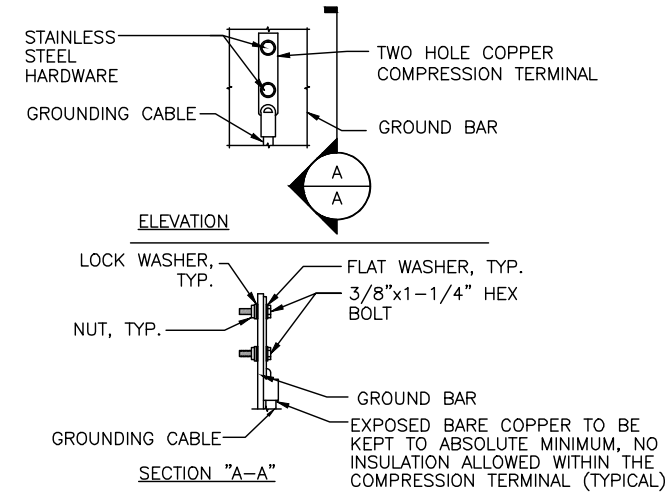


GROUND WIRE TO GROUND BAR CONNECTION DETAIL 1
SCALE: N.T.S. G-1



GROUNDING RISER DIAGRAM 2
SCALE: N.T.S. G-1



- NOTE:
- "DOUBLING UP" OR "STACKING" OF CONNECTION IS NOT PERMITTED.
 - OXIDE INHIBITING COMPOUND TO BE USED AT ALL LOCATION.
 - CADWELD DOWNLEADS FROM UPPER EGB, LOWER EGB, AND MGB

TYPICAL GROUND BAR CONNECTION DETAIL 3
SCALE: N.T.S. G-1

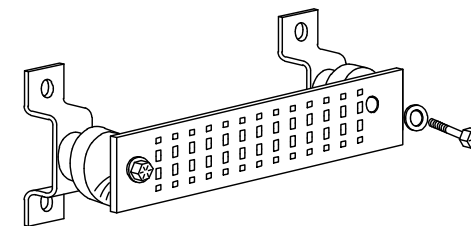
EACH GROUND CONDUCTOR TERMINATING ON ANY GROUND BAR SHALL HAVE AN IDENTIFICATION TAG ATTACHED AT EACH END THAT WILL IDENTIFY ITS ORIGIN AND DESTINATION.

SECTION "P" - SURGE PRODUCERS

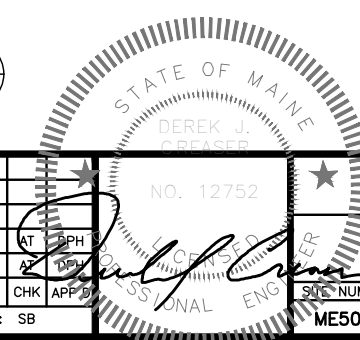
- CABLE ENTRY PORTS (HATCH PLATES) (#2)
- GENERATOR FRAMEWORK (IF AVAILABLE) (#2)
- TELCO GROUND BAR
- COMMERCIAL POWER COMMON NEUTRAL/GROUND BOND (#2)
- +24V POWER SUPPLY RETURN BAR (#2)
- 48V POWER SUPPLY RETURN BAR (#2)
- RECTIFIER FRAMES.

SECTION "A" - SURGE ABSORBERS

- INTERIOR GROUND RING (#2)
- EXTERNAL EARTH GROUND FIELD (BURIED GROUND RING) (#2)
- METALLIC COLD WATER PIPE (IF AVAILABLE) (#2)
- BUILDING STEEL (IF AVAILABLE) (#2)



GROUND BAR - DETAIL 4
SCALE: N.T.S. G-1



Hudson Design Group
1600 OSGOOD STREET
BUILDING 20 NORTH, SUITE 3090
N. ANDOVER, MA 01845
TEL: (978) 557-5553
FAX: (978) 336-5586

SAI
27 NORTHWESTERN DR.
SALEM, NH 03079

SITE NUMBER: ME5001
SITE NAME: SONESTA
157 HIGH STREET
PORTLAND, ME 04101
CUMBERLAND COUNTY

at&t
550 COCHITUATE ROAD
FRAMINGHAM, MA 01701

NO.	DATE	REVISIONS	BY	CHK	APP'D
1	01/23/17	ISSUED FOR CONSTRUCTION	SG	AT	PH
A	01/10/17	ISSUED FOR REVIEW	SB	AT	PH

SCALE: AS SHOWN DESIGNED BY: AT DRAWN BY: SB

STATE OF MAINE DEREK J. CREASER NO. 12752 PROFESSIONAL ENGINEER		AT&T	
GROUNDING DETAILS (LTE 2C/3C)		DRAWING NUMBER	
SITE NUMBER ME5001	DRAWING NUMBER G-1	REV	1