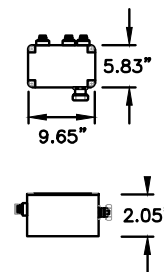


EXISTING ANTENNA SCHEDULE			
SECTOR	MAKE	MODEL#	SIZE (INCHES)
ALPHA	POWERWAVE	7770	55.0x11.0x5.0
	POWERWAVE	7770	55.0x11.0x5.0
	POWERWAVE	7333	53.0x11.0x5.0
BETA	ANDREW	SBNHH-1D65A	55.0x11.9x7.1
	POWERWAVE	7770	55.0x11.0x5.0
	ANDREW	SBNHH-1D65A	55.0x11.9x7.1
	POWERWAVE	7333	53.0x11.0x5.0
GAMMA	POWERWAVE	7770	55.0x11.0x5.0
	ANDREW	SBNHH-1D65A	55.0x11.9x7.1
	POWERWAVE	7333	53.0x11.0x5.0
	POWERWAVE	7770	55.0x11.0x5.0

PROPOSED ANTENNA SCHEDULE			
SECTOR	MAKE	MODEL#	SIZE (INCHES)
ALPHA	POWERWAVE	7770	55.0x11.0x5.0
	POWERWAVE	7333	53.0x11.0x5.0
	QUINTEL	QS46512-2	52.0x12.0x10.8
BETA	ANDREW	SBNHH-1D65A	55.0x11.9x7.1
	POWERWAVE	7770	55.0x11.0x5.0
	ANDREW	SBNHH-1D65A	55.0x11.9x7.1
	POWERWAVE	7333	53.0x11.0x5.0
GAMMA	QUINTEL	QS46512-2	52.0x12.0x10.8
	ANDREW	SBNHH-1D65A	55.0x11.9x7.1
	POWERWAVE	7333	53.0x11.0x5.0
	POWERWAVE	7770	55.0x11.0x5.0

TRIPLEXERS DIMENSIONS	
MODEL #	TPX-070821
MANUF.	CCI
HEIGHT	5.83"
WIDTH	9.65"
DEPTH	2.05"
WEIGHT	7.5 LBS

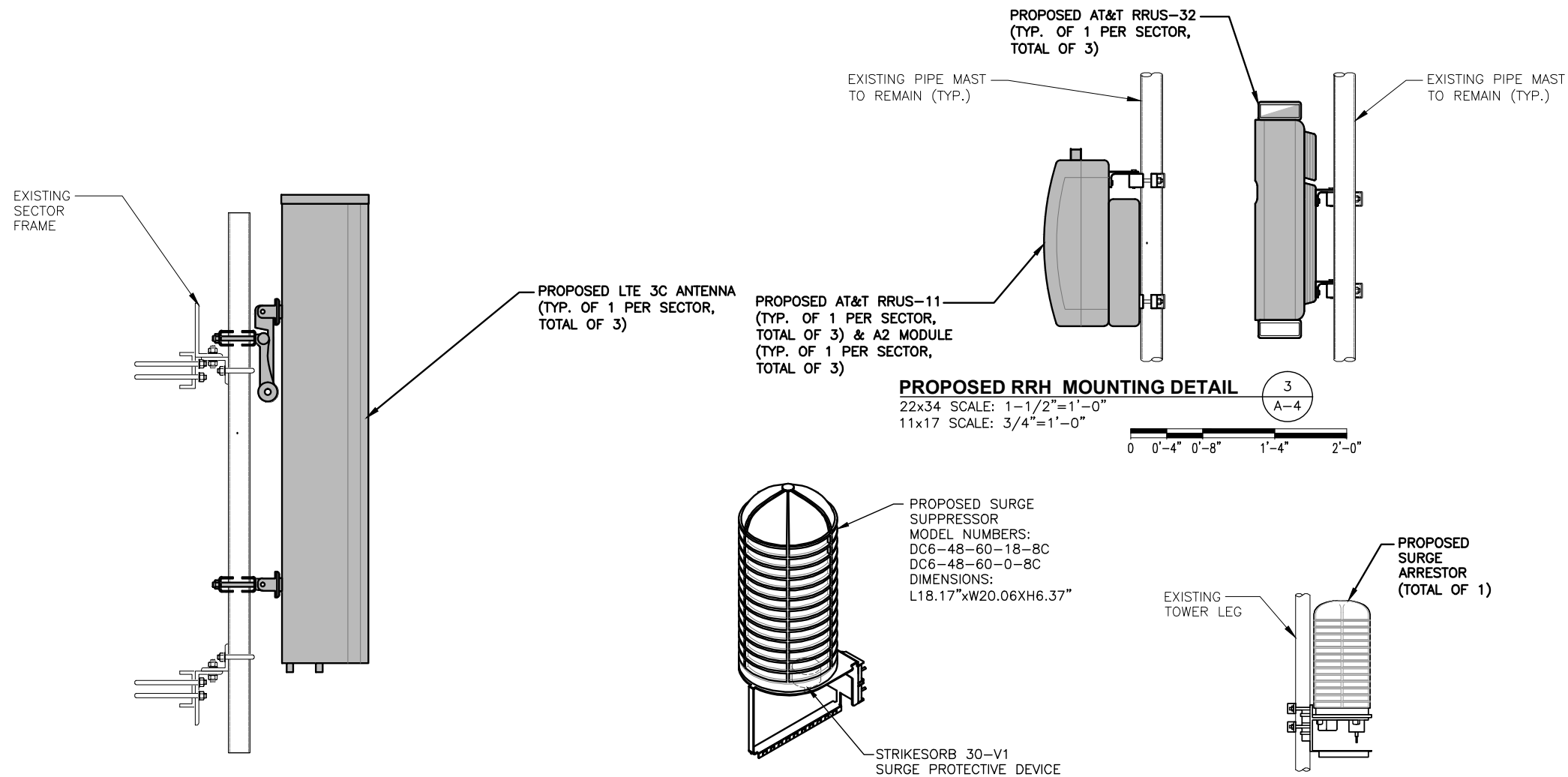


PROPOSED TRIPLEXERS 2
SCALE: N.T.S. A-4

NOTE:
REFER TO THE FINAL RF DATA SHEET FOR FINAL ANTENNA SETTINGS.

NOTE:
REFER TO TOWER STRUCTURAL ANALYSIS BY: HUDSON DESIGN GROUP, LLC, DATED: JANUARY 6, 2017 FOR THE CAPACITY OF THE EXISTING STRUCTURES TO SUPPORT THE PROPOSED EQUIPMENT.

NOTE:
AN ANALYSIS FOR THE CAPACITY OF THE EXISTING ANTENNA MOUNT TO SUPPORT THE PROPOSED LOADING HAS BEEN COMPLETED BY: HUDSON DESIGN GROUP, LLC. DATED: JANUARY 23, 2017.



PROPOSED ANTENNA MOUNTING DETAIL 1
22x34 SCALE: 1-1/2"=1'-0"
11x17 SCALE: 3/4"=1'-0" A-4

DC SURGE SUPPRESSOR DETAIL 4
SCALE: N.T.S. A-4

PROPOSED SURGE ARRESTOR MOUNTING DETAIL 5
SCALE: N.T.S. A-4

NOTE:
SEE RFDS FOR RRH FREQUENCY AND MODEL NUMBER

PROPOSED RRU REFER TO THE FINAL RFDS AND CHART FOR QUANTITY, MODEL AND DIMENSIONS

NOTE:
MOUNT PER MANUFACTURER'S SPECIFICATIONS.

RRU CHART				
QUANTITY	MODEL	L	W	D
3(P)	RRUS-11	19.7"	17.0"	7.2"
3(E)	RRUS-12	20.4"	18.5"	7.5"
3(P)	RRUS-32	27.2"	12.1"	7.0"
-	RRUS-E2	20.4"	18.5"	7.5"
3(P)	LTE-A2	16.4"	15.2"	3.4"

NOTE:
MOUNT PER MANUFACTURER'S SPECIFICATIONS

PROPOSED RRU REFER TO THE FINAL RFDS AND CHART FOR QUANTITY, MODEL AND DIMENSIONS

PROPOSED A2 REFER TO THE FINAL RFDS AND CHART FOR QUANTITY, MODEL AND DIMENSIONS

RRU DETAIL 6
SCALE: N.T.S. A-4

STATE OF NEW HAMPSHIRE
DEREK J. CREAGER
NO. 12752
PROFESSIONAL ENGINEER

Hudson Design Group LLC
1600 OSGOOD STREET
BUILDING 20 NORTH, SUITE 3090
N. ANDOVER, MA 01845
TEL: (978) 557-5553
FAX: (978) 336-5586

SAI
27 NORTHWESTERN DR.
SALEM, NH 03079

SITE NUMBER: ME5001
SITE NAME: SONESTA
157 HIGH STREET
PORTLAND, ME 04101
CUMBERLAND COUNTY

at&t
550 COCHITUATE ROAD
FRAMINGHAM, MA 01701

NO.	DATE	REVISIONS	BY	CHK	APP'D
1	01/23/17	ISSUED FOR CONSTRUCTION	SG	AT	PH
A	01/10/17	ISSUED FOR REVIEW	SB	AT	PH

SCALE: AS SHOWN DESIGNED BY: AT DRAWN BY: SB

SITE NUMBER	DRAWING NUMBER	REV
ME5001	A-4	1

AT&T
DETAILS
(LTE 2C/3C)