

NOTE:
AN ASSESSMENT FOR THE CAPACITY OF THE EXISTING ANTENNA MOUNT TO SUPPORT THE PROPOSED LOADING HAS BEEN COMPLETED BY: HUDSON DESIGN GROUP, LLC. DATED: MAY 05, 2016

NOTE:
REFER TO TOWER STRUCTURAL ANALYSIS BY: HUDSON DESIGN GROUP, LLC, DATED: APRIL 26, 2016, FOR THE CAPACITY OF THE EXISTING STRUCTURES TO SUPPORT THE PROPOSED EQUIPMENT.

NOTE:
REFER TO STRUCTURAL ANALYSIS BY: HUDSON DESIGN GROUP, LLC, DATED: MAY 31, 2016, FOR THE CAPACITY OF THE EXISTING STRUCTURES TO SUPPORT THE PROPOSED EQUIPMENT.

NOTE:
REFER TO THE FINAL RF DATA SHEET FOR FINAL ANTENNA SETTINGS.

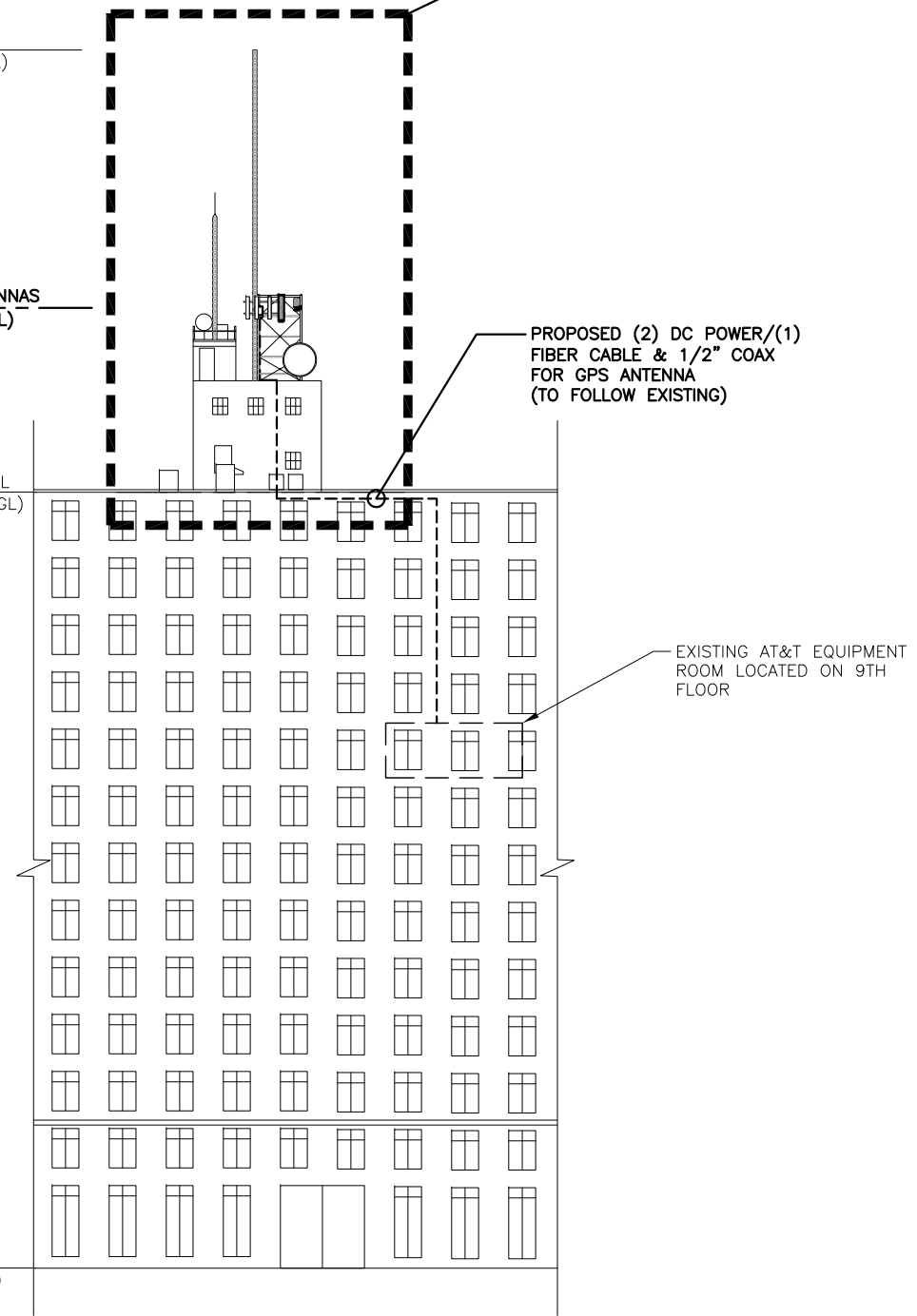
SEE PENTHOUSE ELEVATION

TOP OF TOWER
ELEV. 213'-0"± (AGL)

CL OF PROPOSED & EXISTING AT&T ANTENNAS
ELEV. 186'-0"± (AGL)

TOP OF ROOF LEVEL
ELEV. 136'-0"± (AGL)

GROUND LEVEL
ELEV. 0'-0"± (AGL)

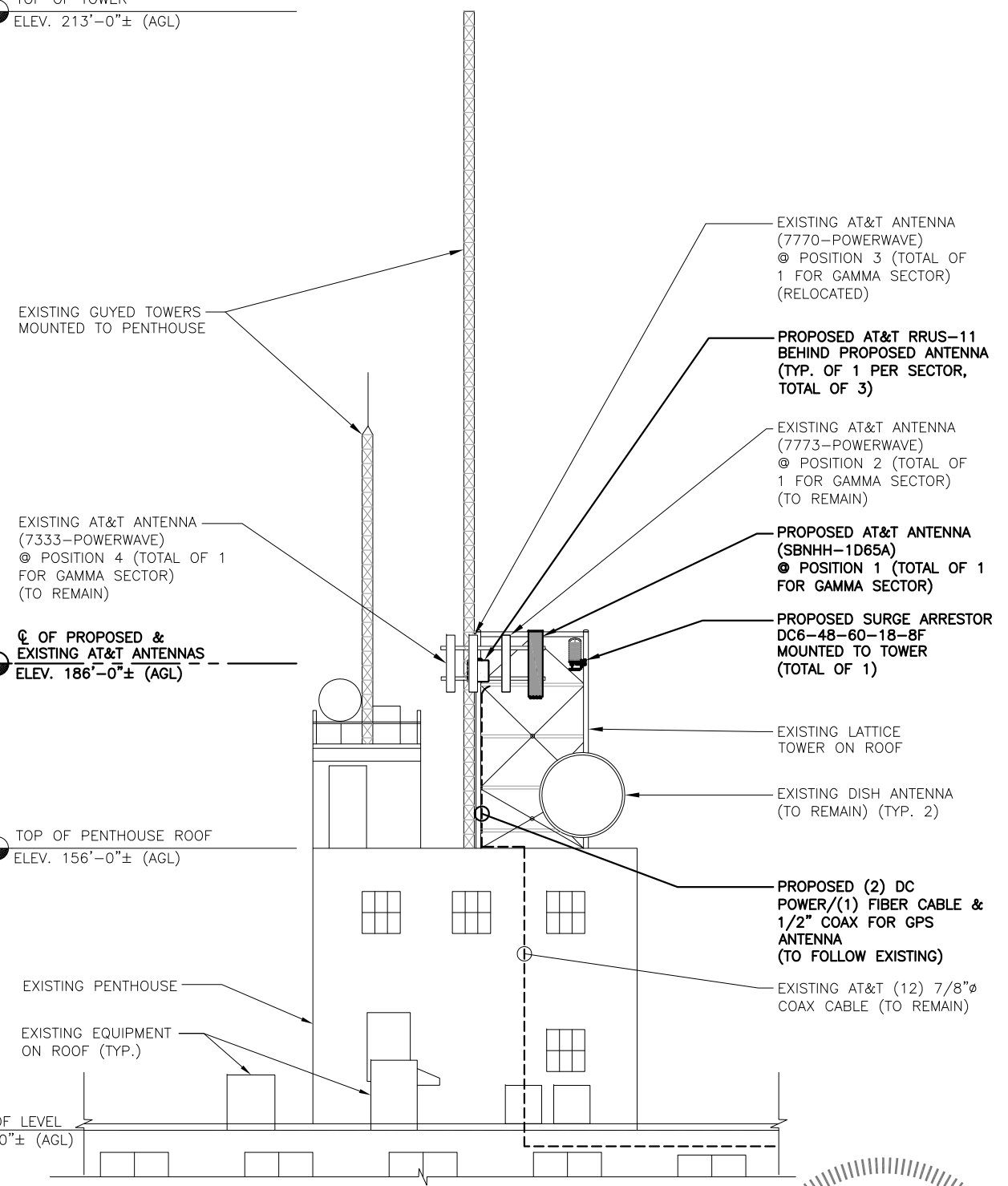


TOP OF TOWER
ELEV. 213'-0"± (AGL)

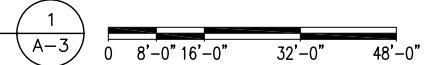
CL OF PROPOSED & EXISTING AT&T ANTENNAS
ELEV. 186'-0"± (AGL)

TOP OF PENTHOUSE ROOF
ELEV. 156'-0"± (AGL)

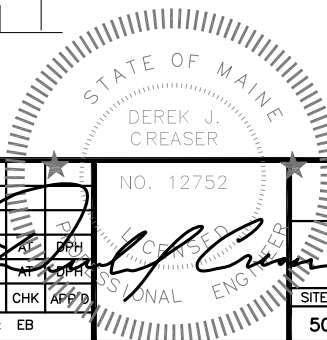
TOP OF ROOF LEVEL
ELEV. 136'-0"± (AGL)



PARTIAL ELEVATION
22x34 SCALE: 1/16"=1'-0"
11x17 SCALE: 1/32"=1'-0"



PENTHOUSE ELEVATION
22x34 SCALE: 3/16"=1'-0"
11x17 SCALE: 3/32"=1'-0"



Hudson Design Group LLC
1600 OSGOOD STREET
BUILDING 20 NORTH, SUITE 3090
N. ANDOVER, MA 01845
TEL: (978) 557-5553
FAX: (978) 336-5586

SAI
27 NORTHWESTERN DR.
SALEM, NH 03079

SITE NUMBER: ME5001
SITE NAME: SONESTA
157 HIGH STREET
PORTLAND, ME 04101
CUMBERLAND COUNTY

at&t
550 COCHITUATE ROAD
FRAMINGHAM, MA 01701

NO.	DATE	REVISIONS	BY	CHK	APP'D
1	06/01/16	ISSUED FOR CONSTRUCTION	SC	AT	EB
A	04/19/16	ISSUED FOR REVIEW	EB	AT	PH

SCALE: AS SHOWN DESIGNED BY: AT DRAWN BY: EB

SITE NUMBER	5001.00
DRAWING NUMBER	A-3
REV	1

AT&T
ELEVATION (LTE)