

FOR CONTINUATION, SEE SHEET FA02

ISSUE DATES:

DATE	DESCRIPTION
11/11/2010	ISSUE FOR PERMIT
02/11/2011	REVISIONS
03/11/2011	FEDERAL SUBMITTALS



FIRE RISK MANAGEMENT, INC.
 Fire Protection Engineers & Code Consultants
 1 Yearly Ln., Suite 100, Westport, ME 04091-2012

Project:
WESTIN EASTLAND PARK HOTEL RENOVATION
 FOR
ROCKBRIDGE CAPITAL, LLC.
 457 HIGH STREET
 PORTLAND, ME

Sheets Title:
FIRE ALARM LEGEND, NOTES & ONE-LINE

DATE	BY	DESCRIPTION
11/11/2010	JLH	ISSUE FOR PERMIT
02/11/2011	JLH	REVISIONS
03/11/2011	WAC	FEDERAL SUBMITTALS

FA0.01

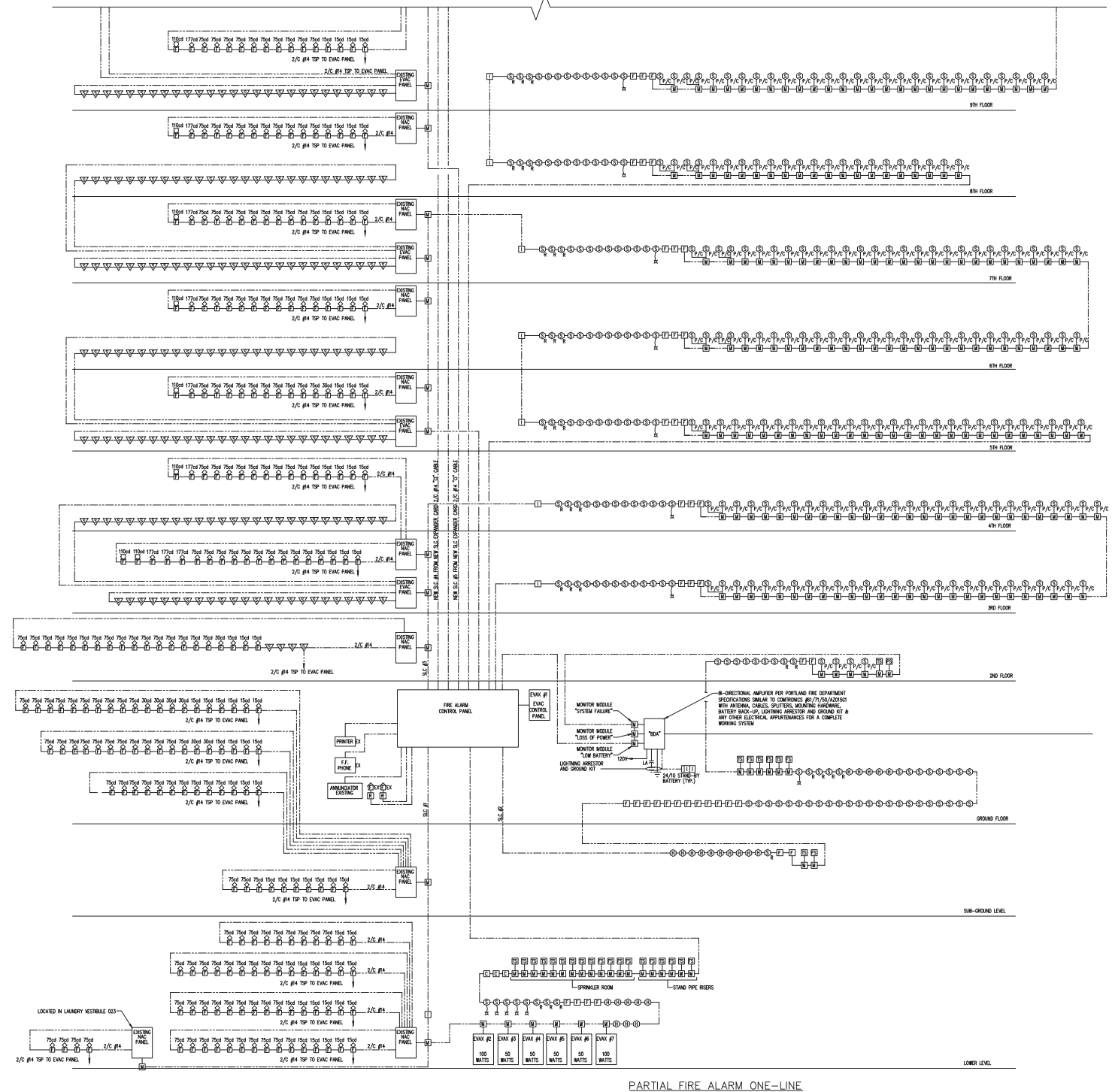
ISSUE SET - RELEASED FOR CONSTRUCTION

FIRE ALARM LEGEND

- 750d FIRE ALARM SYSTEM ADA TYPE 750d/754 HORN/ STROBE UNIT WALL MOUNTED 80" ABOVE FINISHED FLOOR OR 6" BELOW FINISHED CEILING WHICHEVER IS LOWER
- 750a FIRE ALARM SYSTEM ADA TYPE 750a/754 SPEAKER/ STROBE UNIT WALL MOUNTED 80" ABOVE FINISHED FLOOR OR 6" BELOW FINISHED CEILING WHICHEVER IS LOWER
- 150d FIRE ALARM SYSTEM ADA TYPE 150d STROBE ONLY UNIT WALL MOUNTED 80" ABOVE FINISHED FLOOR OR 6" BELOW FINISHED CEILING WHICHEVER IS LOWER
- 150a FIRE ALARM SYSTEM ADA TYPE 150a SPEAKER ONLY UNIT WALL MOUNTED 80" ABOVE FINISHED FLOOR OR 6" BELOW FINISHED CEILING WHICHEVER IS LOWER
- 750 FIRE ALARM SYSTEM ADA TYPE 750 CHIME WALL MOUNTED 80" ABOVE FINISHED FLOOR OR 6" BELOW FINISHED CEILING WHICHEVER IS LOWER
- MANUAL PULL STATION MOUNTED 48" ABOVE FINISHED FLOOR
- CEILING MOUNTED PHOTOELECTRIC SYSTEM TYPE SMOKE DETECTOR
- CEILING MOUNTED PHOTOELECTRIC SYSTEM TYPE SMOKE DETECTOR FOR ELEVATOR RECALL ELEVATOR SHALL PERFORM RECALL UPON INITIATION OF RESPECTIVE DEVICE
- DUCT MOUNTED SMOKE DETECTOR UPON ACTIVATION THE RESPECTIVE AIR HANDLING AND ASSOCIATED ZONE AND THE DAMPER SHALL BE DE-ACTIVATED
- CEILING MOUNTED PHOTOELECTRIC SYSTEM TYPE SMOKE DETECTOR SINGLE STATION
- AUTOMATIC HEAT DETECTOR 135 DEGREE FIXED TEMPERATURE WITH ZONE ADDRESSABLE MODULE
- CEILING MOUNTED PHOTOELECTRIC SYSTEM CARBON MONOXIDE (CO) DETECTOR
- FIRE ALARM SYSTEM MASTER BOX
- FIRE ALARM CONTROL PANEL "750P"
- FIRE ALARM VOICE EVACUATION PANEL "70P"
- FIRE ALARM ANNUNCIATOR "7AA"
- FIRE ALARM TERMINAL BOX
- NAC PANEL
- FIRE ALARM WEATHERPROOF BEACON
- FIRE ALARM SYSTEM DOOR HURDLER
- FIRE PROTECTION SYSTEM FLOW SWITCH FURNISHED AND INSTALLED BY THE SPRINKLER CONTRACTOR, WIRED BY ELECTRICAL CONTRACTOR
- FIRE PROTECTION SYSTEM TRAMPER SWITCH FURNISHED AND INSTALLED BY THE SPRINKLER CONTRACTOR, WIRED BY ELECTRICAL CONTRACTOR
- FIRE PROTECTION SYSTEM PRESSURE SWITCH FURNISHED AND INSTALLED BY THE SPRINKLER CONTRACTOR, WIRED BY ELECTRICAL CONTRACTOR
- REMOTE INDICATOR W/ TEST STATION
- ADDRESSABLE MONITOR MODULE
- CONTROL MODULE
- MONITOR BOX
- 24VDC HOUR BATTERY
- CELLULAR PHONE SURVEY & AMP/ 24 VOLTS WITH 4 REDUNDANT CIRCUITS NUMBER CAT NO. T095-2400 WITH BATTERY BACK-UP AND INTERNAL CHARGER POWER LIMITED FIRE ALARM CABLE TYPE "70P" 2/C #14 FOR WIRING CIRCUITS 2/C #14 FOR STROBE CIRCUITS AND 2/C #14 TOP FOR SPEAKER CIRCUITS
- ADDRESSABLE ISOLATION MODULE
- 2P DENOTES TWISTED SHIELDED PAIR

FIRE ALARM SYSTEM SEQUENCE OF OPERATION:

1. AN ALARM AND COMMUNICATION SYSTEMS SHALL BE PROVIDED AND INSTALLED TO COMPLY WITH THE FOLLOWING FUNCTIONS:
 ALARM SOUNDING
 FIRE DEPARTMENT COMMUNICATIONS CONTROLS FOR SMOKE EVACUATION
2. THE OPERATION OF ANY SYSTEM MAKING HEAT DETECTOR, SPRINKLER WATERFLOW DEVICE, SPECIAL EXTINGUISHMENT SYSTEM OR MANUAL FIRE ALARM STATION SHALL AUTOMATICALLY:
 A. NOTIFY THE FIRE DEPARTMENT
 B. SOUND AN ALERT (PRE-SIGNAL) TONE (THE ALERT (PRE-SIGNAL) TONE SHALL BE A 300 HERTZ (300 HERTZ) TONE TO PROVIDE ONE (1) MINUTE OF CLEAR AT APPROXIMATELY ONE (1) SECOND INTERVALS)
 C. ACTIVATE THE RECORDED MESSAGE REGARDING THE EVACUATION PROCEDURE (THE ALARM AND COMMUNICATIONS SYSTEM SHALL PROVIDE A PRE-RECORDED MESSAGE TO ALL ROOMS AREAS. THE MESSAGE SHALL CONTAIN THE FOLLOWING INFORMATION: IDENTIFY FLOOR, USE OF ELEVATORS, USE OF STAIRS, AND BEARING. IF YOUR FLOOR EVACUATION SIGNAL SOUNDS, IMMEDIATELY LEAVE THE AREA TO THE NEAREST STAIRWAY AND LEAVE THE FLOOR WHILE THE REPORT IS BEING VERIFIED. OCCUPANTS ON OTHER FLOORS SHOULD ABANDON FURTHER INSTRUCTIONS*)
 * THIS MESSAGE SHALL BE REPEATED 30 SEC.
 * A 15 SECOND TONE SHALL BE USED FOR THIS MESSAGE
 D. ACTIVATE THE EVACUATION SIGNAL (THE EVACUATION SIGNAL SHALL BE A STANDARD "LOW WHIST" TONE. THE LOW WHIST SHALL BE SOUNDING TONE CONTINUING AT APPROXIMATELY 600 HERTZ AND TERMINATING AT APPROXIMATELY 1.7 (1.7) SECONDS AND AN INTERMISSION BETWEEN TONES OF APPROXIMATELY 1/2 (1/2) SECONDS)
 E. INITIATE SMOKE CONTROL SYSTEMS
3. THE OPERATION OF ANY SYSTEM SMOKE DETECTOR, WATERFLOW DEVICE SHALL AUTOMATICALLY CONFINE ALL ELEVATORS AND RETURN TO AN APPROVED LEVEL
4. THE SYSTEM SHALL BE ELECTRICALLY/ELECTRONICALLY SUPERVISED AGAINST COMPONENT FAILURE. THE SYSTEM SHALL BE NOTIFIED TO AMPLIFIERS, LOGGING/ALARM WARN, SWITCHES AND ELECTRICAL CONTACTS AND SHALL DETECT OPEN, SHORT, OPENED OR LOSS OF SIGNAL WHICH MIGHT IMPAIR THE FUNCTION OF THE SYSTEM.
5. NO MORE THAN NINE (9) LOGGERS SERVING ANY FLOOR OR ZONE SHALL BE CONNECTED TO THE SAME REED CIRCUIT.
6. THE EXISTING FIRE COMMAND CENTER FOR FIRE DEPARTMENT OPERATIONS IS PROVIDED IN A NEARLY ACCESSIBLE LOCATION APPROVED BY THE SUPERINTENDENT OF FIRE ALARM. IT SHALL CONTAIN THE FOLLOWING:
 A. THE ALARM SYSTEM ANNUNCIATION PANEL
 B. THE EXISTING MASTERBOX OR CENTRAL STATION TRANSMITTER
 C. VOICE COMMUNICATIONS SYSTEM CONTROLS
 D. FIRE DEPARTMENT COMMUNICATION SYSTEM A TWO (2) WIRE FIRE DEPARTMENT COMMUNICATION SYSTEM SHALL BE PROVIDED FOR COMMAND CENTER AND EVERY ELEVATOR LOBBY AND ENTRY TO EVERY ENCLOSED STAIRWAY
 E. STATUS INDICATORS FOR ALL ELEVATORS
 F. STATUS INDICATORS AND CONTROLS FOR AIR HANDLING SYSTEMS
 G. CONTROLS FOR UNLOCKING ALL STAIRWAY DOORS
 H. SPRINKLER VALVE STATUS AND WATERFLOW DETECTOR ANNUNCIATING PANELS
 I. EMERGENCY POWER LIGHT AND EMERGENCY SYSTEM CONTROLS AND STATUS INDICATORS
 J. EMERGENCY BATTERY-POWERED LIGHTING SUFFICIENT TO PROVIDE AT LEAST ONE (1) HOUR OF LIGHTING
7. ALARM SEQUENCE
 1. ALERT (PRE-SIGNAL) TONE
 2. RECORDED MESSAGE REGARDING EVACUATION PROCEDURE
 3. EVACUATION SIGNAL
 4. GENERAL EVACUATION SIGNAL



PARTIAL FIRE ALARM ONE-LINE
 SCALE: NO SCALE