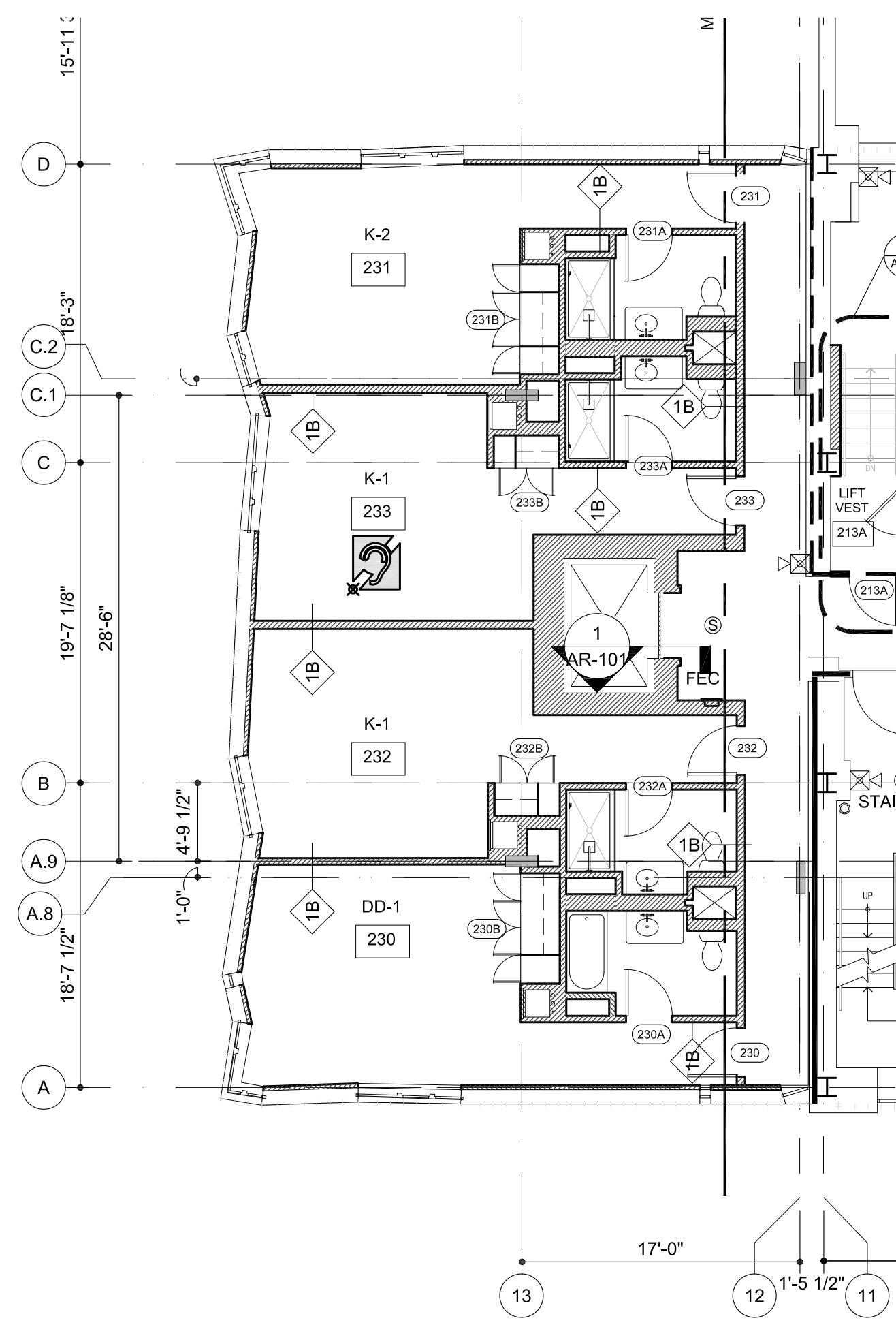




Issue Dates:

1	JULY 9, 2012	ISSUE FOR PERMIT
2	APRIL 18, 2013	FIELD UPDATES & REVISIONS
3	MAY 7, 2013	FIRE MARSHALL COMMENTS



TOWER EXPANSION AT 2ND LEVEL
SCALE: 1/8" = 1'-0"

WALL LEGEND

	EXISTING
	NEW
	SMOKE
	1 HOUR
	2 HOUR
	EXISTING DEMISING

NOTE: CONTRACTOR SHALL VERIFY ALL INFORMATION HAS BEEN PROVIDED FROM THE ORIGINAL CONSTRUCTION DOCUMENTS. THE CONTRACTOR SHALL BE RESPONSIBLE FOR VERIFYING THE ACTUAL FIELD CONDITIONS. THE CONTRACTOR AND ALL ASSOCIATED SUBCONTRACTORS SHALL BE RESPONSIBLE FOR VERIFYING THE ACTUAL FIELD CONDITIONS.

Project:

**WESTIN
EASTLAND PARK
HOTEL RENOVATION
FOR
ROCKBRIDGE CAPITAL, LLC.
157 HIGH STREET
PORTLAND, ME**

This Document is the property of Raintree Architecture, Inc. (PFVS) and is to be used only in connection with the project named herein. Reproduction in whole or in part, shall be allowed only with the express written or verbal permission from the architect. Drawing scales as shown are valid on the original sized document which is 30 by 42 inches. © 2013 Raintree Architecture, Inc. All rights reserved.

Sheet Title:

**2ND LEVEL
FLOOR PLAN**

Job Number:

Scale: 1/8" = 1'-0"

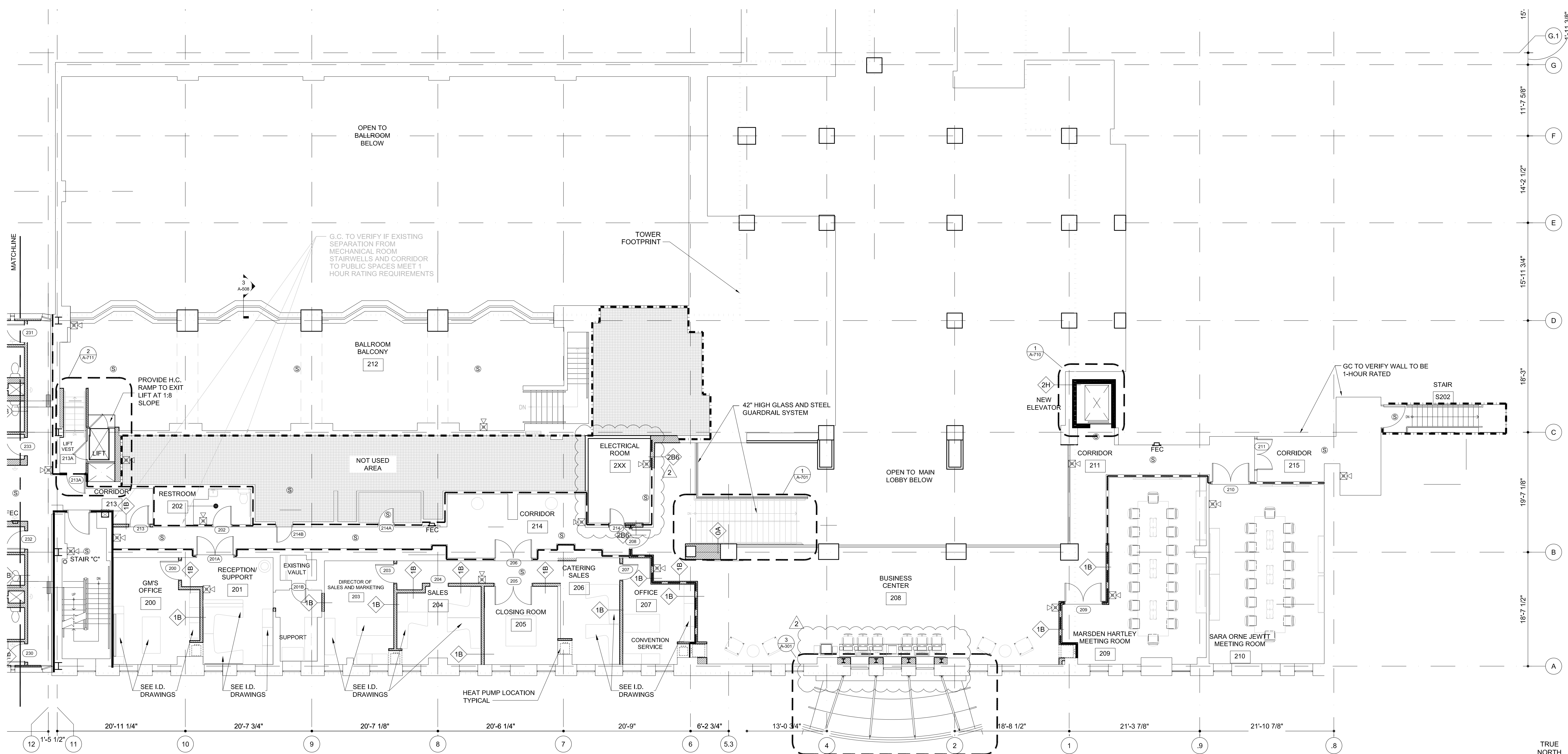
Drawn: IP

Checked: AR

Date: Nov. 21, 2011

PERMIT SET - RELEASED FOR CONSTRUCTION

A-101



2ND LEVEL FLOOR PLAN
SCALE: 1/8" = 1'-0"

SEE SHEETS A-408 - A-409 FOR ENLARGED DIMENSION PLANS

