



Issue Dates:  
JULY 9, 2012  
ISSUE FOR PERMIT  
APRIL 18, 2013  
FIELD UPDATES & REVISIONS  
MAY 7, 2013  
FIRE MARSHALL COMMENTS

**WESTIN**  
HOTELS & RESORTS  
ROCKBRIDGE CAPITAL

NEW CASTLE HOTELS  
& RESORTS

CONTRACTOR  
**IDC**  
IDC CONSTRUCTION, LLC

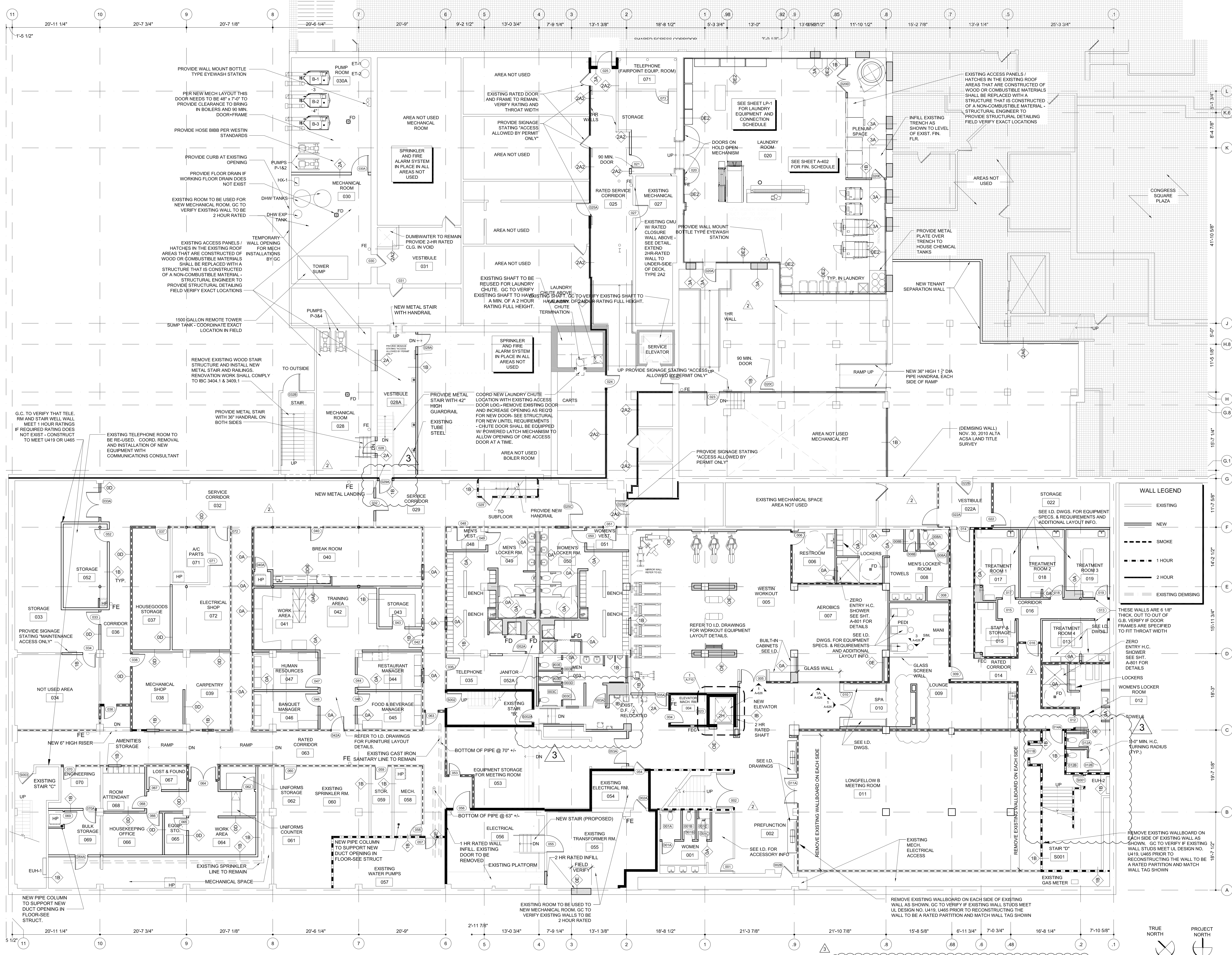
NOTE: THE DOCUMENTS CONTAINED HEREIN HAVE BEEN PRODUCED FROM UNLIMITED ORIGINAL CONSTRUCTION DOCUMENTS. THE REVISIONS OF THE ATTACHED DOCUMENTS AND ACTUAL TRADES SHALL BE RESPONSIBLE FOR VERIFYING THE ACTUAL EXISTING CONDITIONS.

Project:  
**WESTIN EASTLAND PARK HOTEL RENOVATION**  
FOR  
**ROCKBRIDGE CAPITAL, LLC.**  
157 HIGH STREET  
PORTLAND, ME

This Document is the property of Raintree Architecture, Inc. (PFVS) and is to be used only in connection with the project named herein. Reproduction, in whole or in part, shall be allowed only with the express written or verbal permission from the architect. Drawing scales as shown are valid on the original sized document which is 30 by 42 inches. © 2013 Raintree Architecture, Inc. All rights reserved.

Sheet Title:  
**B-2 BASEMENT FLOOR PLAN**

Scale: 1/8" = 1'-0"  
Drawn: IP  
Checked: ARR  
Date: Nov. 21, 2011  
PERMIT SET - RELEASED FOR CONSTRUCTION



**WALL LEGEND**

(Solid line)	EXISTING
(Dashed line)	NEW
(Dotted line)	SMOKE
(Dash-dot line)	1 HOUR
(Long-dash line)	2 HOUR
(Thin solid line)	EXISTING DEMISING

THESE WALLS ARE 8 1/8" THICK. OUT TO OUT OF G.B. VERIFY IF DOOR FRAMES ARE SPECIFIED TO FIT THROAT WIDTH.

ZERO ENTRY H.C. SHOWER SEE SHT. A-801 FOR DETAILS

9'-0" MIN. H.C. TURNING RADIUS (TYP.)

HANDRAILS PROVIDED ON BOTH SIDES OF ALL RAMPS

**B-2 BASEMENT FLOOR PLAN**  
SCALE: 1/8" = 1'-0"