



Issue Dates:

ISSUE FOR PERMIT	JULY 9, 2012
ISSUE FOR PERMIT	MARCH 12, 2013
ISSUE FOR PERMIT	JUNE 24, 2013
CITY INSPECTION	

NOTE: THE DOCUMENTS CONTAINED HEREIN HAVE BEEN PRODUCED IN ACCORDANCE WITH THE PROFESSIONAL STANDARDS AND PRACTICES OF THE ARCHITECT ASSOCIATION OF AMERICA. THE ARCHITECT ASSUMES NO LIABILITY FOR ANY DEVIATIONS OF THE ATTACHED DOCUMENTS AND ACTUAL TRADES SHALL BE RESPONSIBLE FOR VERIFYING THE ACTUAL EXISTING CONDITIONS.

Project:  
WESTIN  
EASTLAND PARK  
HOTEL RENOVATION  
FOR  
ROCKBRIDGE CAPITAL, LLC.  
157 HIGH STREET  
PORTLAND, ME

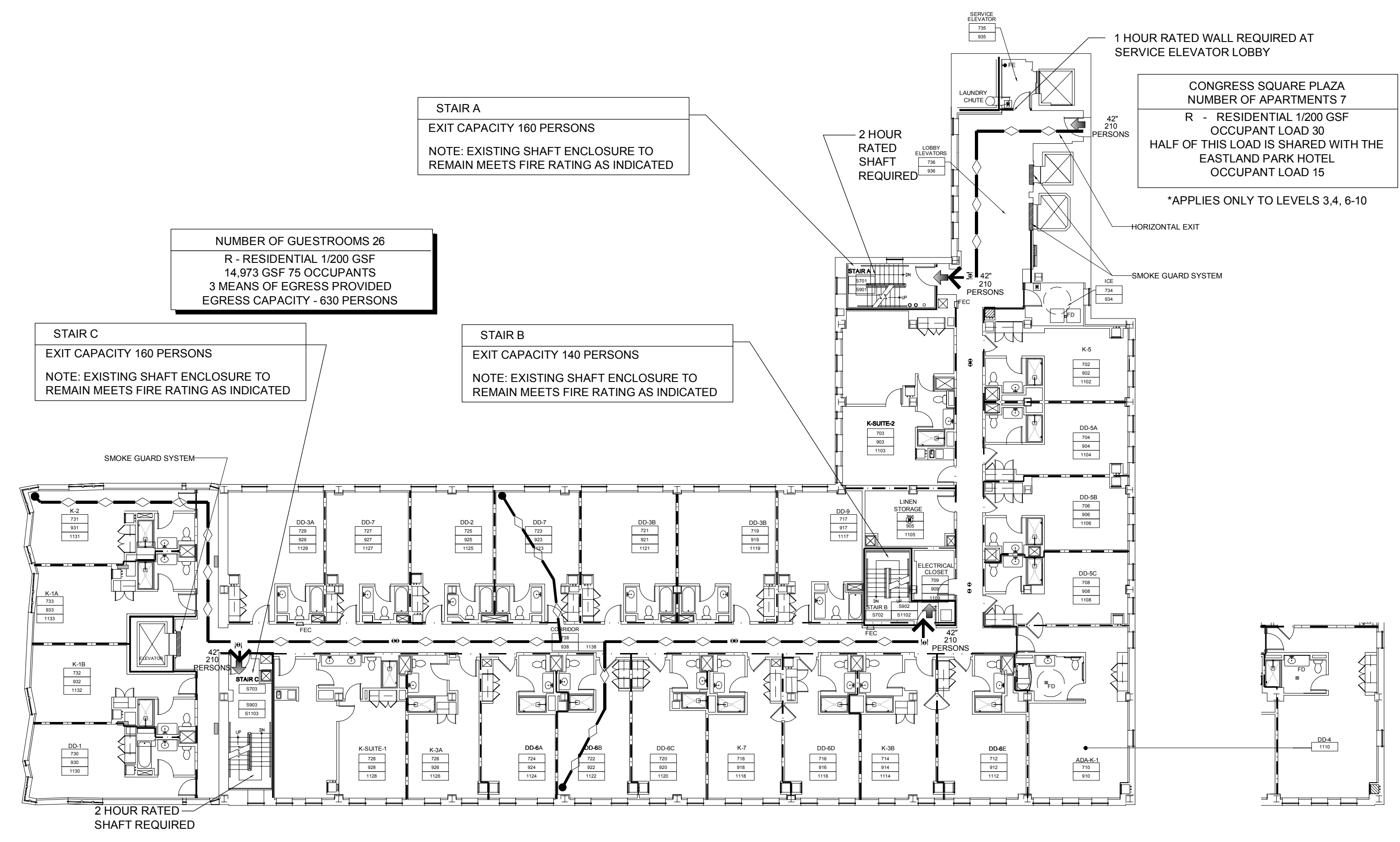
This Document is the property of Raintree Architecture, Inc. (PFVS) and is to be used only in connection with the project named herein. Reproduction, in whole or in part, shall be allowed only with the express written or verbal permission from the architect. Drawing scales as shown are valid on the original sized document which is 36 by 42 inches. © 2013 Raintree Architecture, Inc. d/b/a PFVS Architecture.

Sheet Title:  
**GUESTROOMS  
LEVELS & TOTE  
LIFE SAFETY  
PLANS**

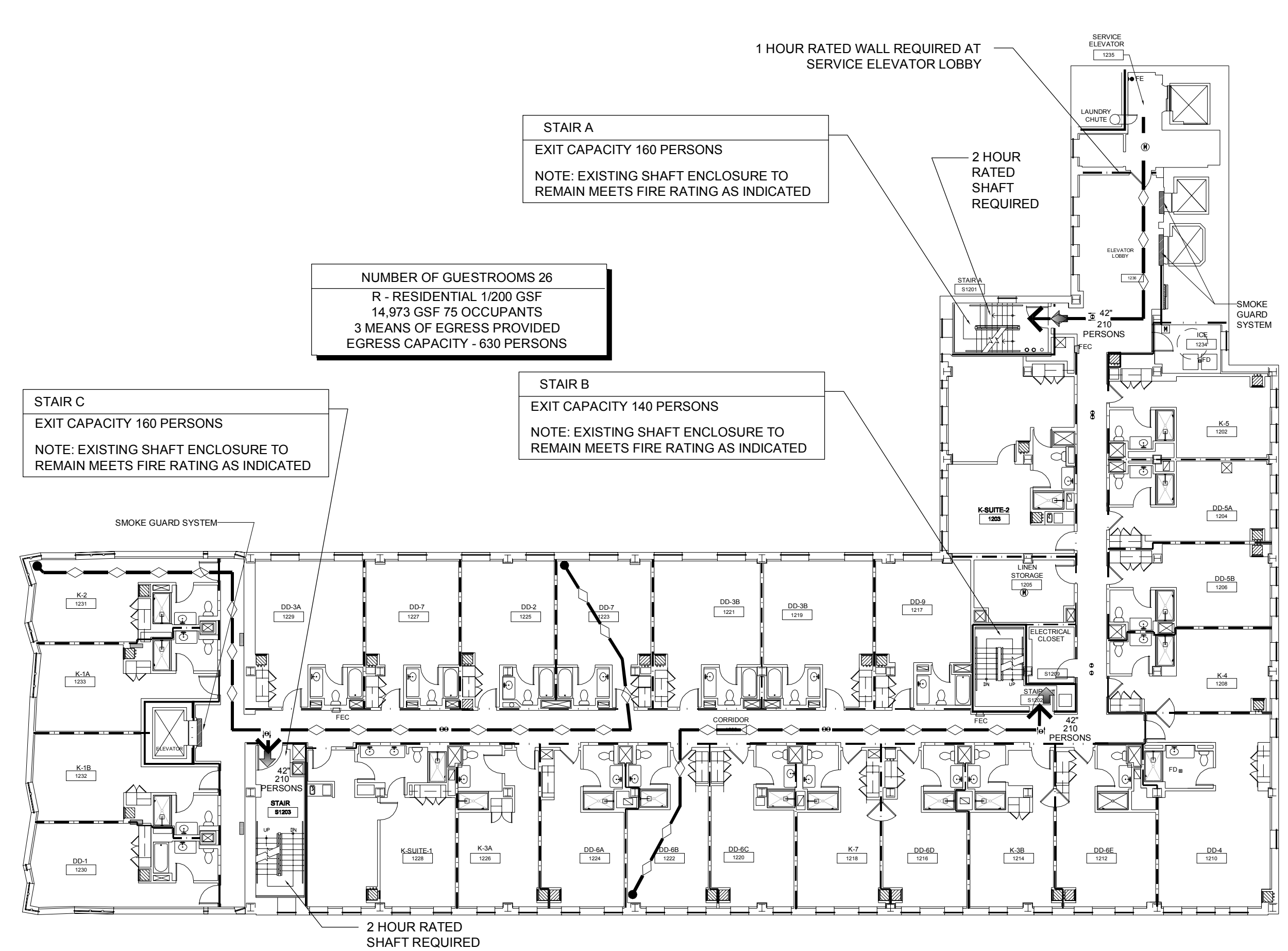
Job Number:  
11009  
Scale:  
1/16" = 1'-0"  
Drawn:  
Checked:  
Date:  
Nov. 21, 2011

PERMIT SET - RELEASED  
FOR CONSTRUCTION

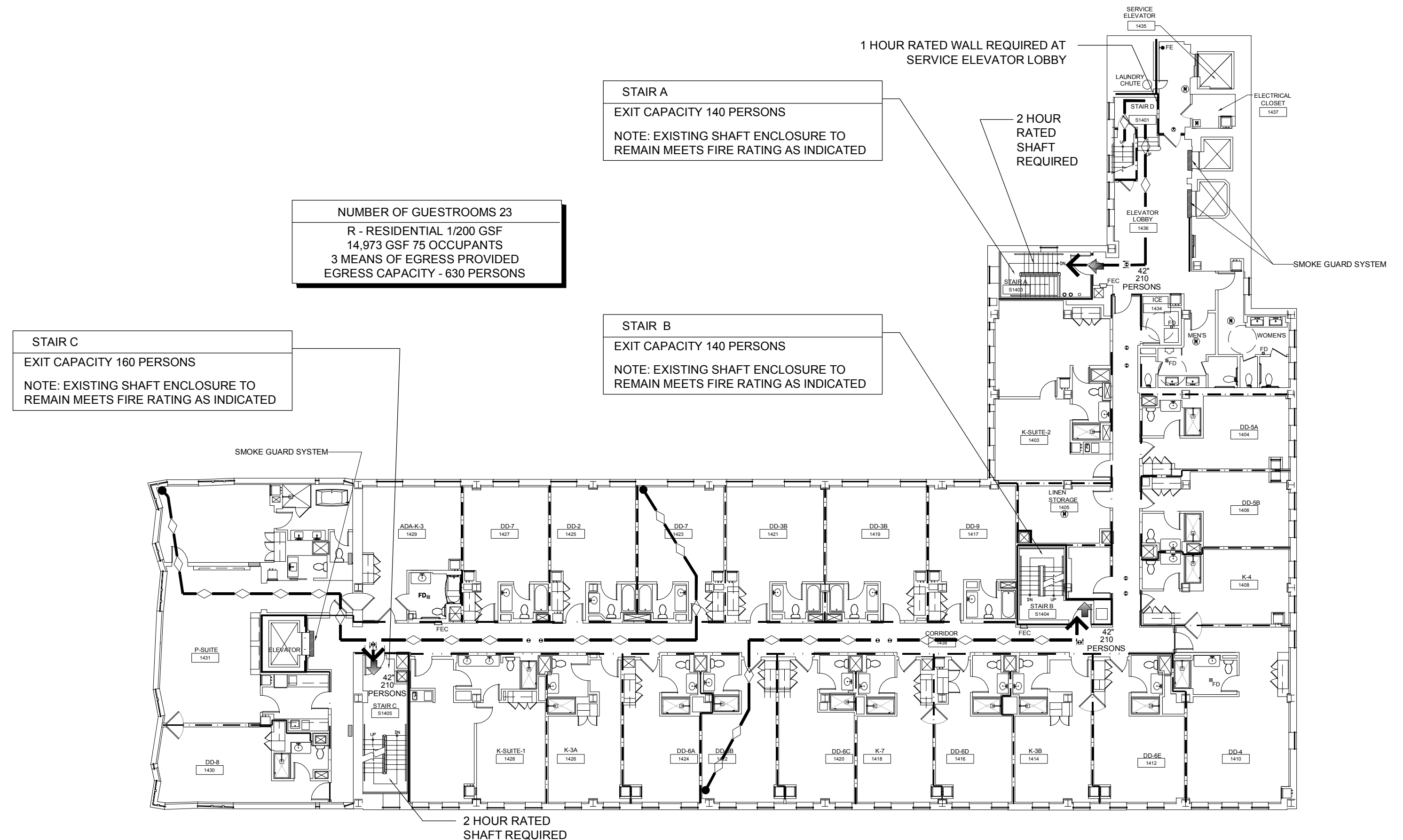
LS-103



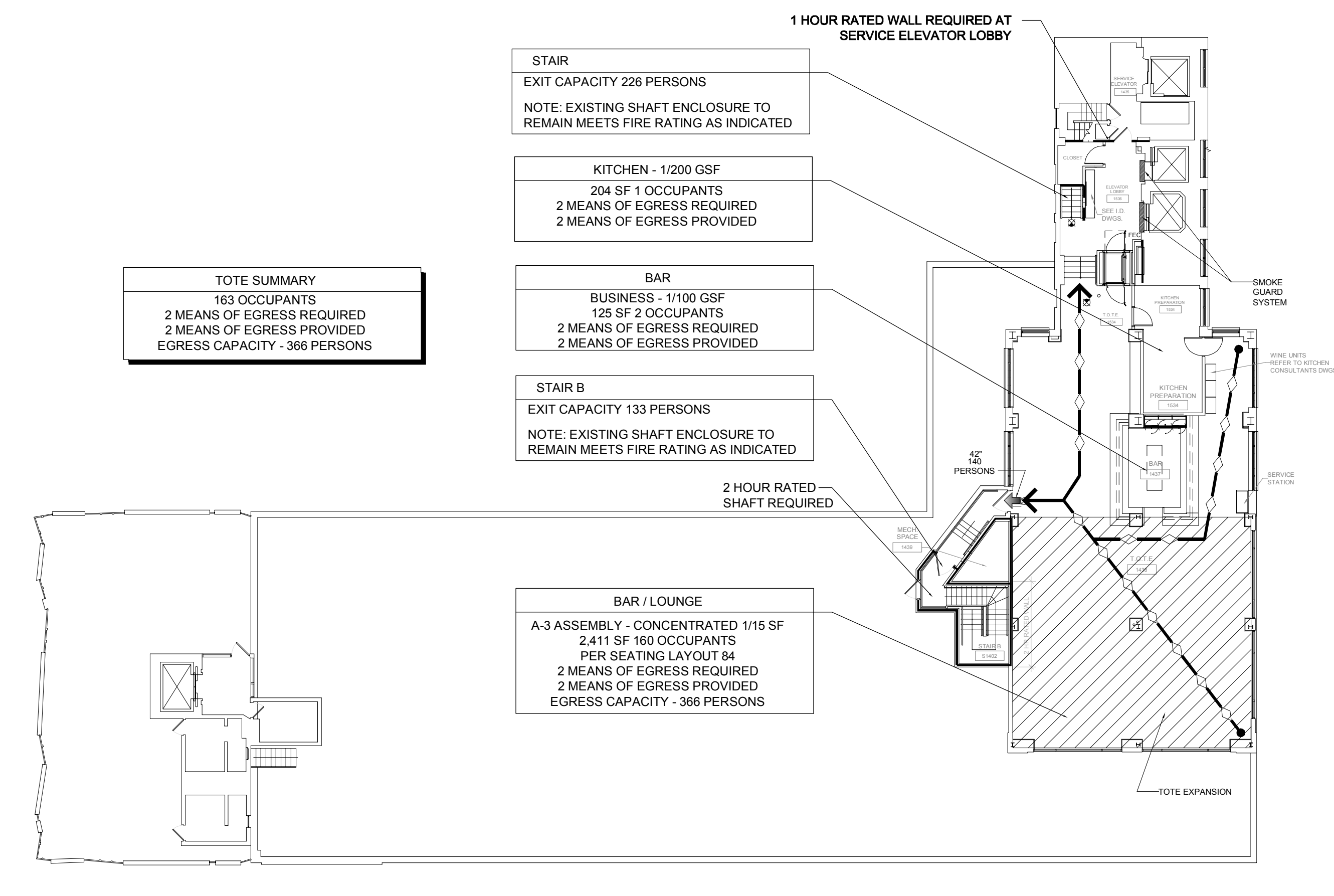
7TH, 9TH AND 11TH FLOOR LIFE SAFETY PLAN  
SCALE: 1/16" = 1'-0"



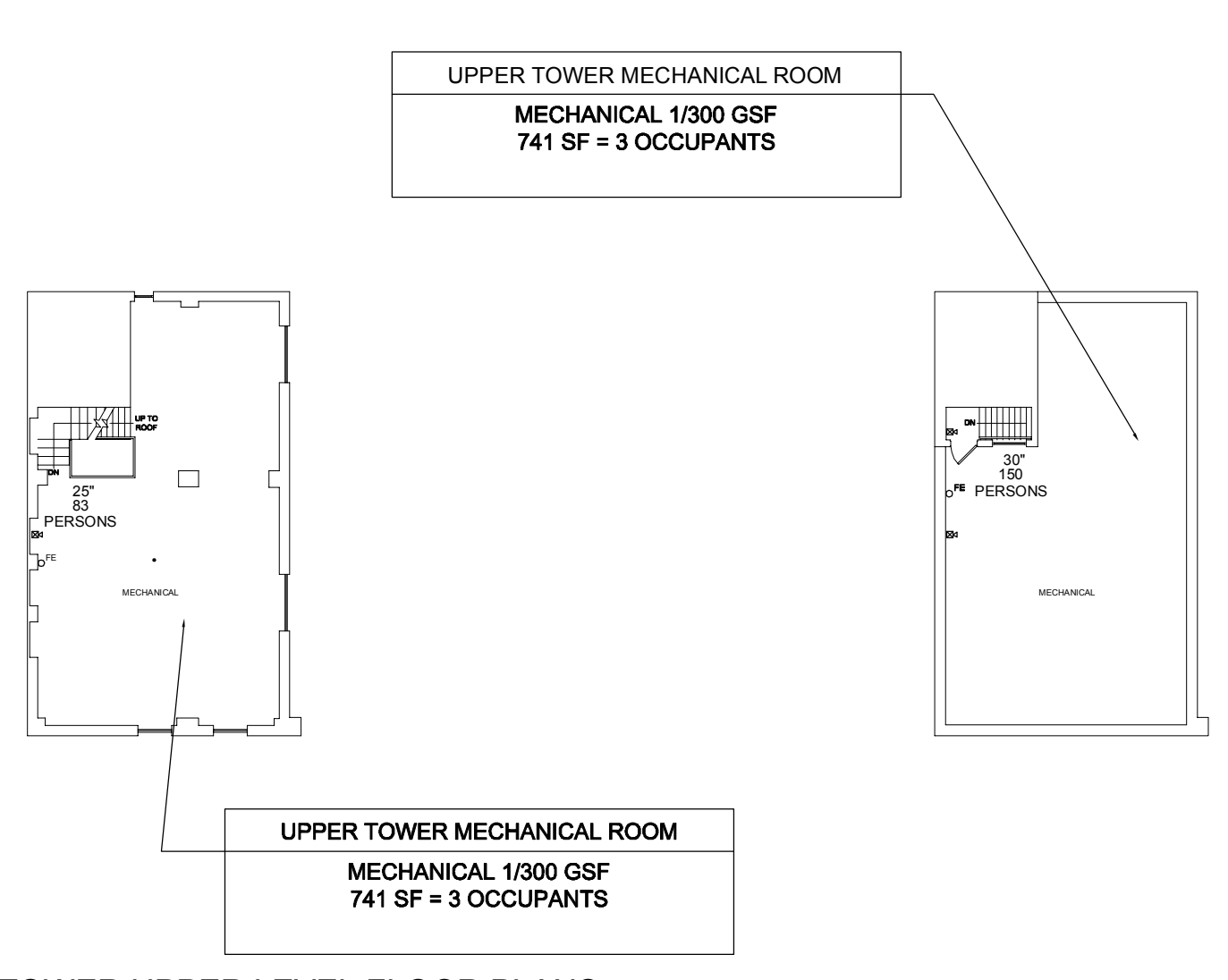
12TH FLOOR LIFE SAFETY PLAN  
SCALE: 1/16" = 1'-0"



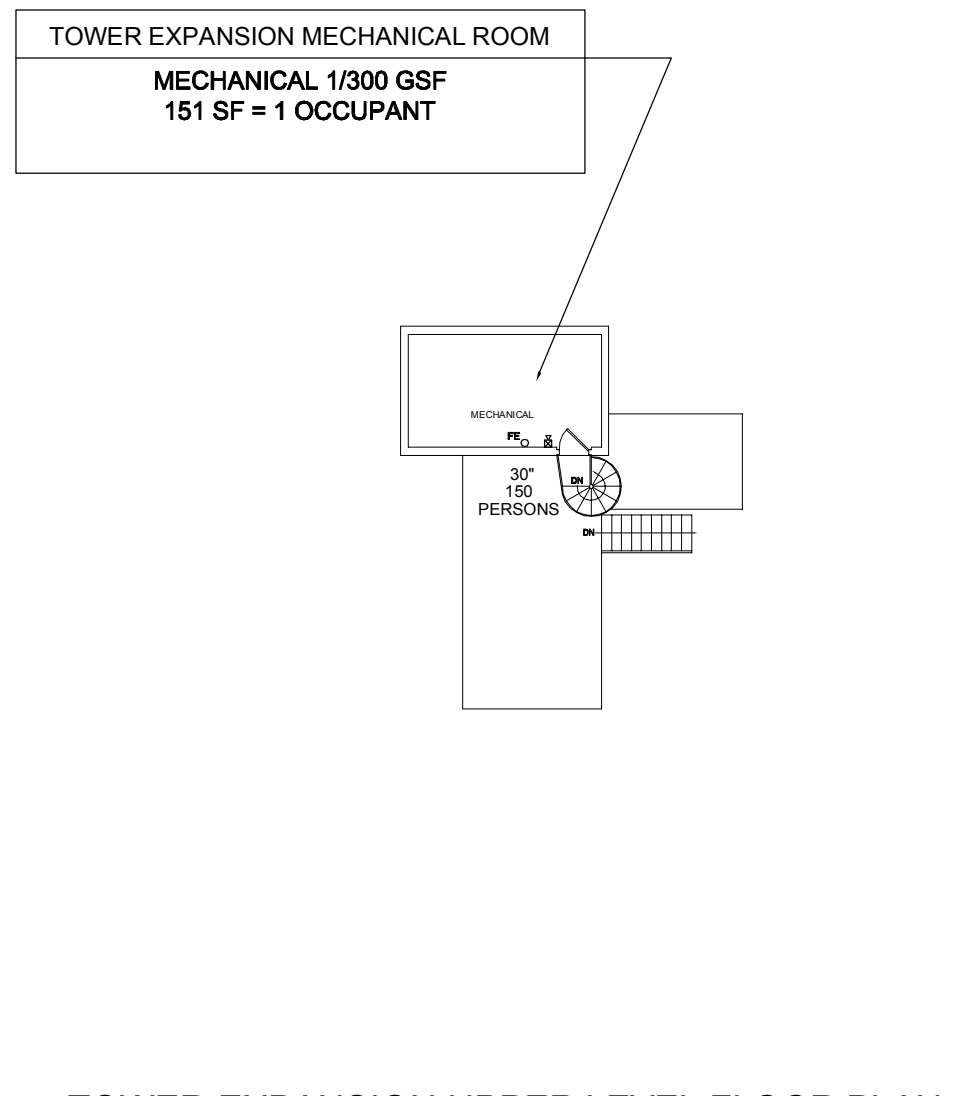
14TH FLOOR LIFE SAFETY PLAN  
SCALE: 1/16" = 1'-0"



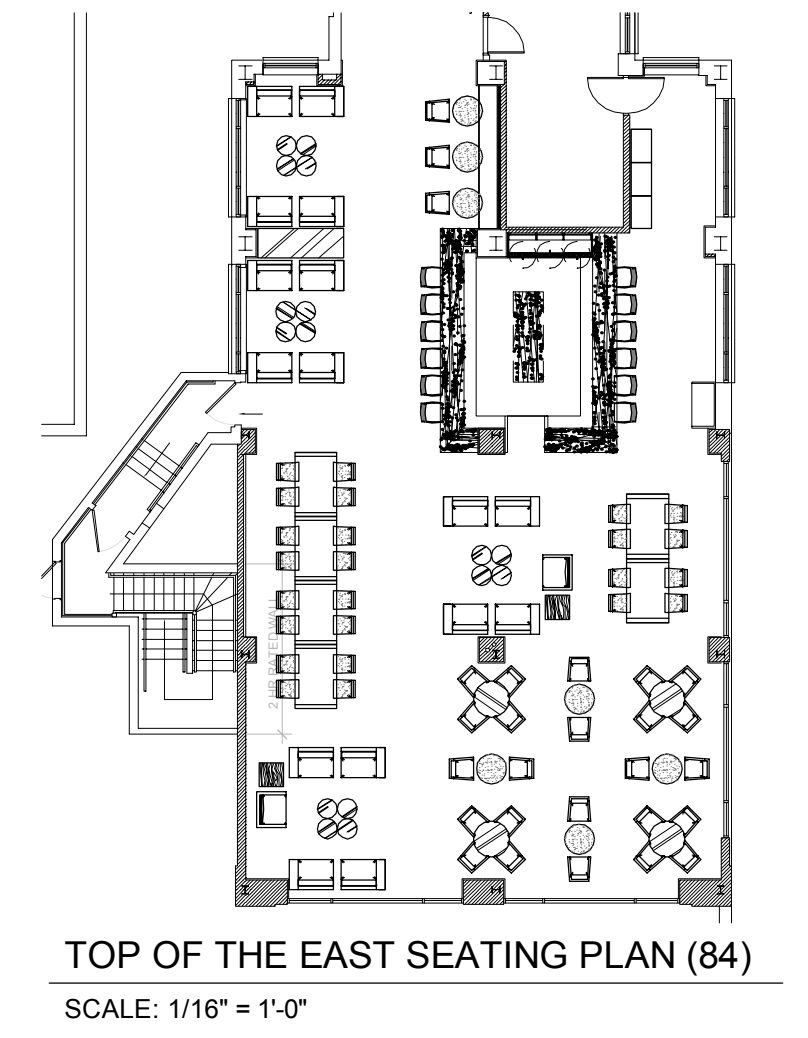
TOP OF THE EAST LIFE SAFETY PLAN  
SCALE: 1/16" = 1'-0"



TOWER UPPER LEVEL FLOOR PLANS  
SCALE: 1/16" = 1'-0"



TOWER EXPANSION UPPER LEVEL FLOOR PLAN  
SCALE: 1/16" = 1'-0"



TOP OF THE EAST SEATING PLAN (84)  
SCALE: 1/16" = 1'-0"

LEGEND

SMOKE PARTITION	---
30 MINUTES	---
ONE HOUR	---
TWO HOUR	---
PATH OF TRAVEL	---
EXISTING BOUNDARY WALL	---
NEW 2 HR. TENANT WALL	---
FIRE EXTINGUISHER CABINET	F E C
FIRE EXTINGUISHER WALL MOUNTED	F E
EXIT SIGN	⬇

- NOTES:
- FIRST FLOOR LEVEL IS CLASSIFIED AS NON-SEPARATED OCCUPANCIES AS DEFINED BY 2009 IBC, SECTION 508.3.
  - THE ENTIRE BUILDING IS EQUIPPED WITH AN APPROVED SPRINKLER SYSTEM IN ACCORDANCE WITH 2009 IBC, SECTION 903, AUTOMATIC SPRINKLER SYSTEM.
  - GUESTROOMS MUST BE SEPARATED FROM EACH OTHER BY 1-HOUR FIRE RESISTANCE RATED WALLS.
  - CORRIDORS SERVING RESIDENTIAL OCCUPANCIES MUST HAVE A MINIMUM FIRE RESISTANCE RATING OF AT LEAST 1/2-HOUR.
  - SHAFTS CONNECTING 4 STORIES OR MORE, INCLUDING EXIT STAIRS AND ELEVATOR SHAFTS ENCLOSURES, MUST HAVE A MINIMUM FIRE RESISTANCE RATING OF 2-HOURS.
  - LAUNDRY/TRASH CHUTE ACCESS MUST BE FROM A ROOM, NOT DIRECTLY FROM CORRIDOR, AND THE ROOM MUST HAVE A MINIMUM FIRE RESISTANCE RATING OF 1-HOUR.
  - LAUNDRY/TRASH CHUTE TERMINATION ROOMS MUST HAVE A 1-HOUR RESISTANCE RATING.
  - STC RATING FOR INTERIOR PARTITIONS MAY INCREASE FIRE RATING CONSTRUCTION NOT SHOWN ON LIFE SAFETY PLANS FOR WALL TYPE CONSTRUCTION, TYPICAL.
  - GENERAL CONTRACTOR TO CONFIRM EXISTING FIRE PARTITIONS, ADJACENT NEW PARTITIONS AS WELL AS EXISTING NOT IN SCOPE OF WORK MEET CURRENT LIFE SAFETY PLANS, TYP.
  - DUE TO FIELD CONSTRAINTS NOT ALLOWING INSTALLATION OF SMOKE DETECTOR UNDER THE EXISTING BEAMS, THESE ARE TO BE INSTALLED ON THE WALLS IMMEDIATELY BELOW THE BEAMS AS AGREED WITH THE AUTHORITY HAVING JURISDICTION.
  - PROVIDE SEMI-RECESSED FIRE EXTINGUISHERS, REFER TO PLANS FOR QUANTITY AND LOCATIONS AS REQUIRED.
  - PROVIDE SMOKE CURTAIN (SMOKE GUARD SYSTEM) AT ELEVATOR DOORS ON LEVELS 2 THRU 14 AND TOP OF THE EAST PER 2009 IBC 708.14.1.
  - SMOKE PARTITION TERM IS PER 2009 NFPA 101 3.3.228 - "A CONTINUOUS MEMBRANE THAT IS DESIGNED TO FORM A BARRIER TO LIMIT THE TRANSFER OF SMOKE."