



Issue Dates:
JULY 9, 2012
ISSUE FOR PERMIT
MARCH 12, 2013
ISSUE FOR PERMIT

NOTE: THE DOCUMENTS CONTAINED HEREIN HAVE BEEN PRODUCED IN ACCORDANCE WITH 2009 IBC, SECTION 503.3. THE ARCHITECT ASSUMES NO LIABILITY RESULTING FROM THE DEVIATIONS OF THE ATTACHED DOCUMENTS AND ACTUAL TRADES SHALL BE RESPONSIBLE FOR VERIFYING THE ACTUAL EXISTING CONDITIONS.

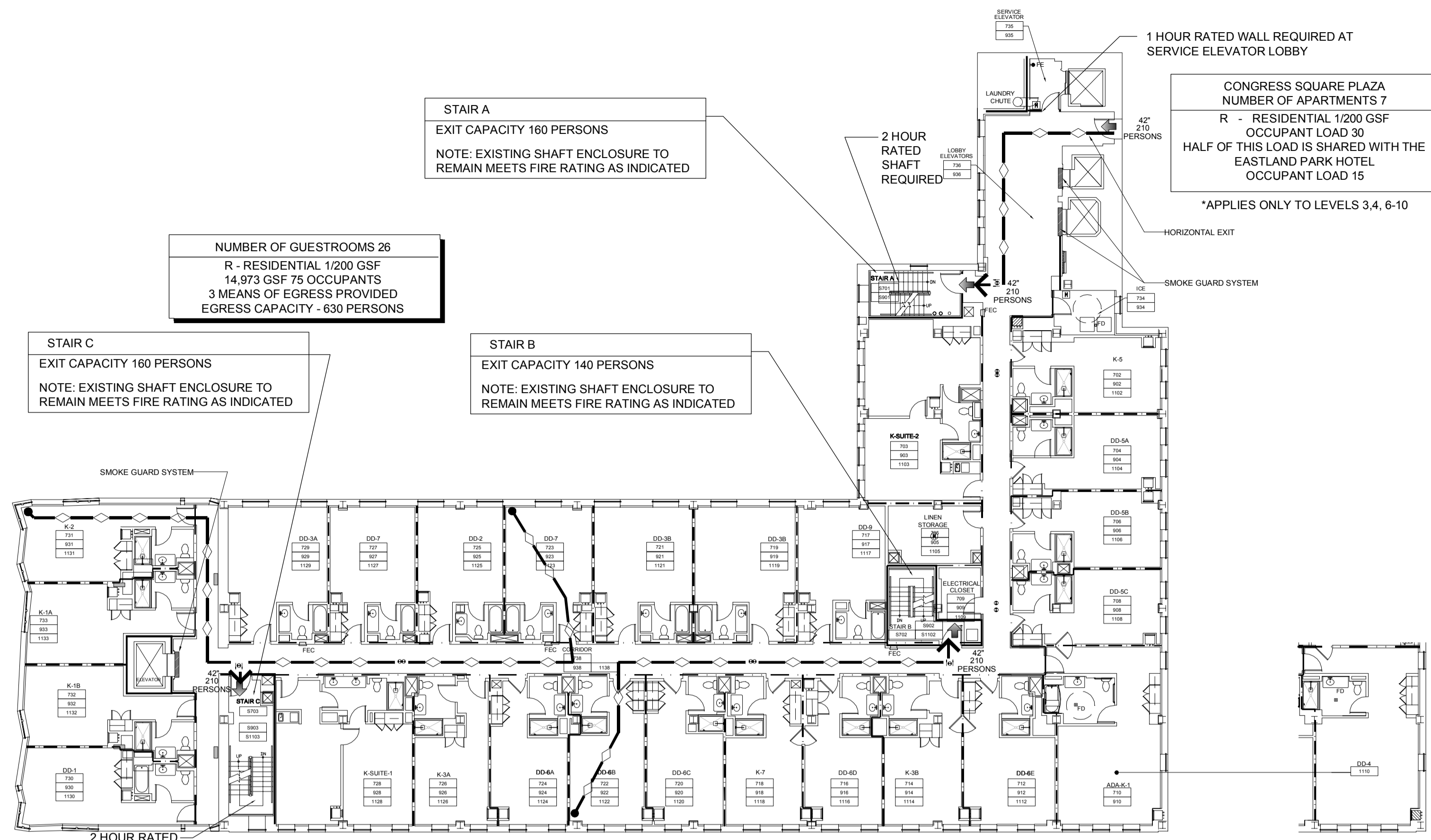
Project:
WESTIN
EASTLAND PARK
HOTEL RENOVATION
FOR
ROCKBRIDGE CAPITAL, LLC.
157 HIGH STREET
PORTLAND, ME

This Document is the property of Raintree Architecture, Inc. (PFVS) and is to be used only in connection with the project named herein. Reproduction, in whole or in part, shall be allowed only with the express written or verbal permission from the architect. Drawing scales as shown are valid on the original sized document which is 36 by 42 inches. © 2013 Raintree Architecture, Inc. d/b/a PFVS Architecture.

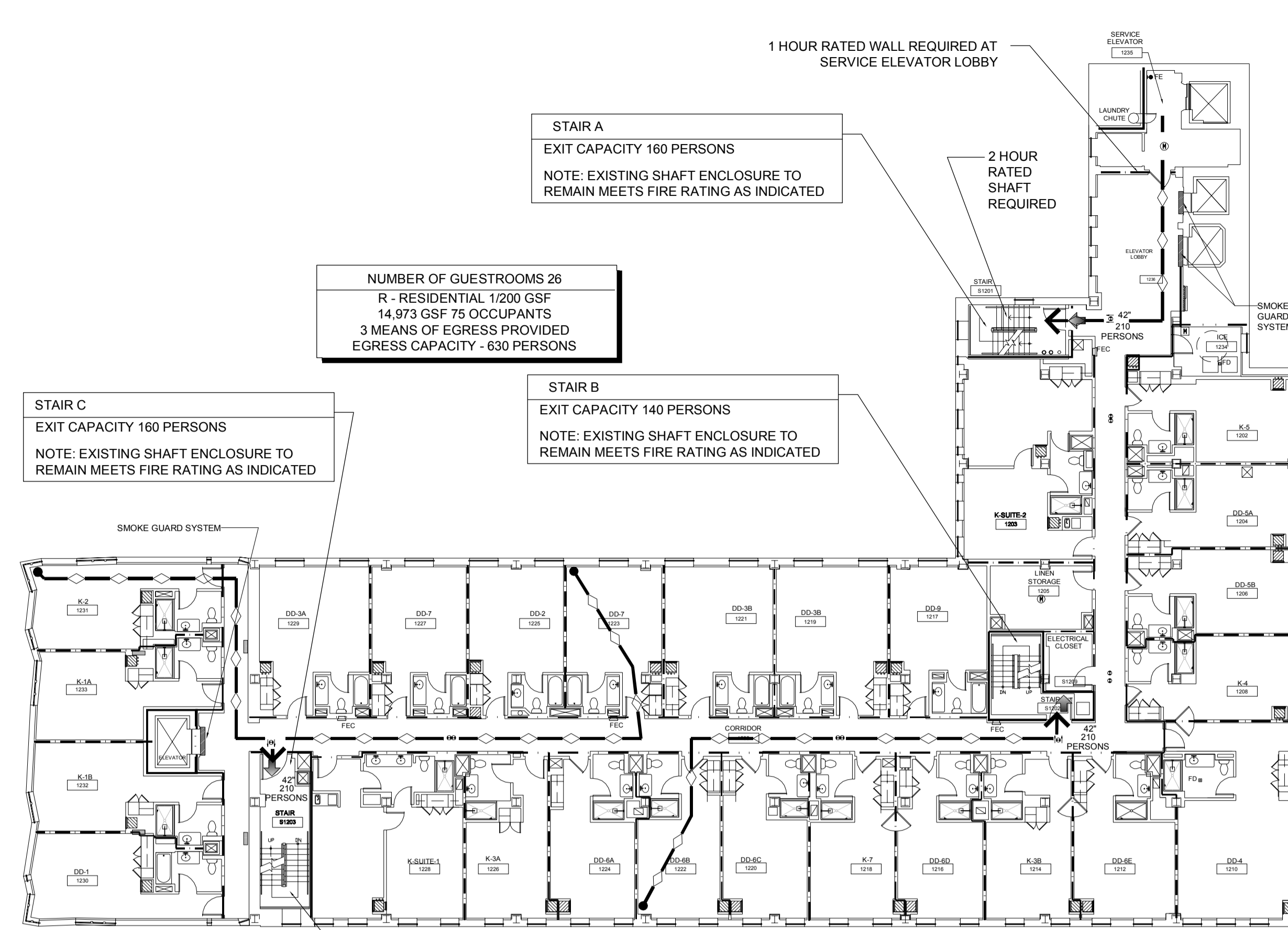
Sheet Title:
**GUESTROOMS
LEVELS & TOTE
LIFE SAFETY
PLANS**

Job Number: 11009
Scale: 1/16" = 1'-0"
Drawn:
Checked:
Date: Nov. 21, 2011
PERMIT SET - RELEASED FOR CONSTRUCTION

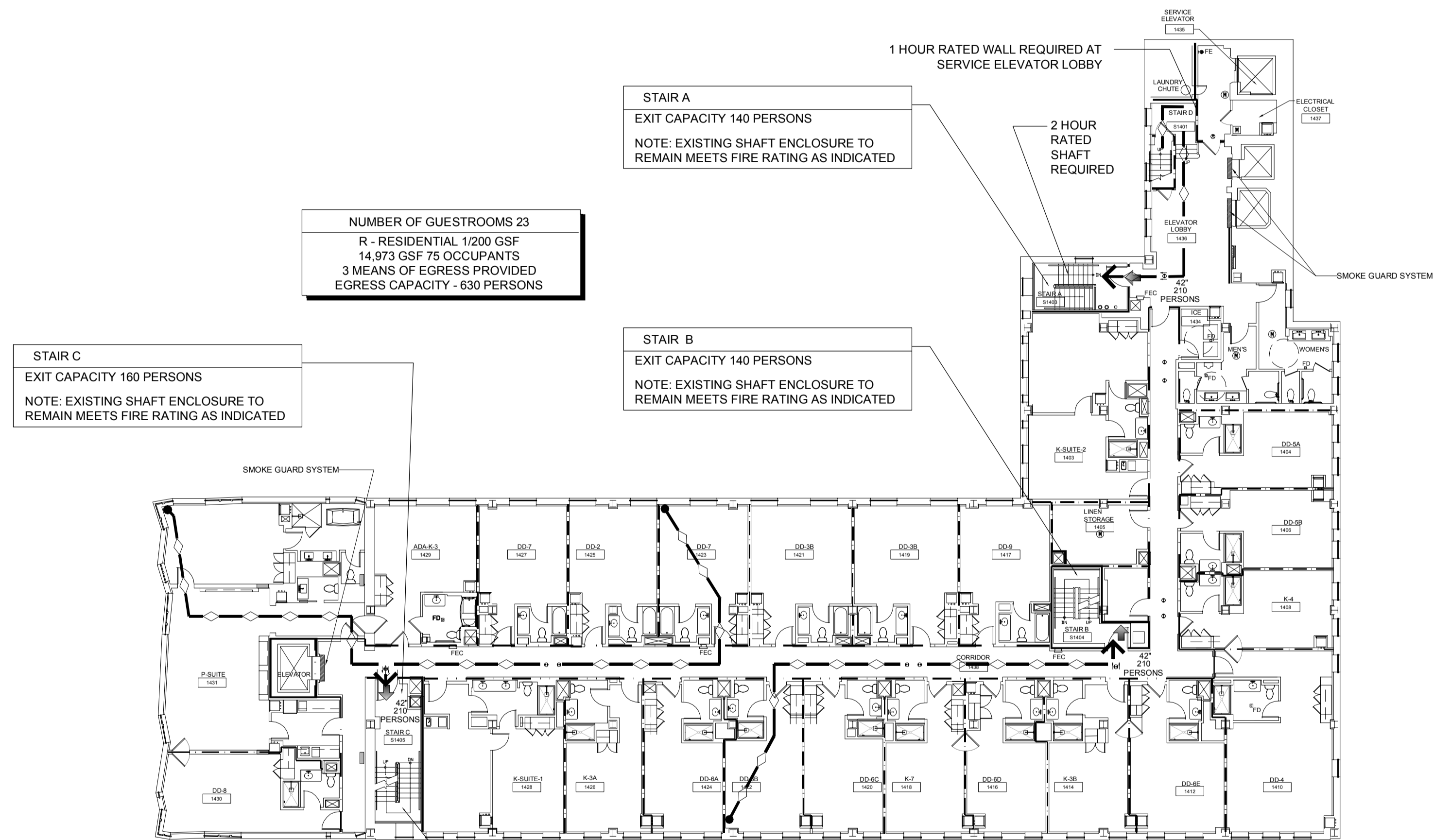
LS-103



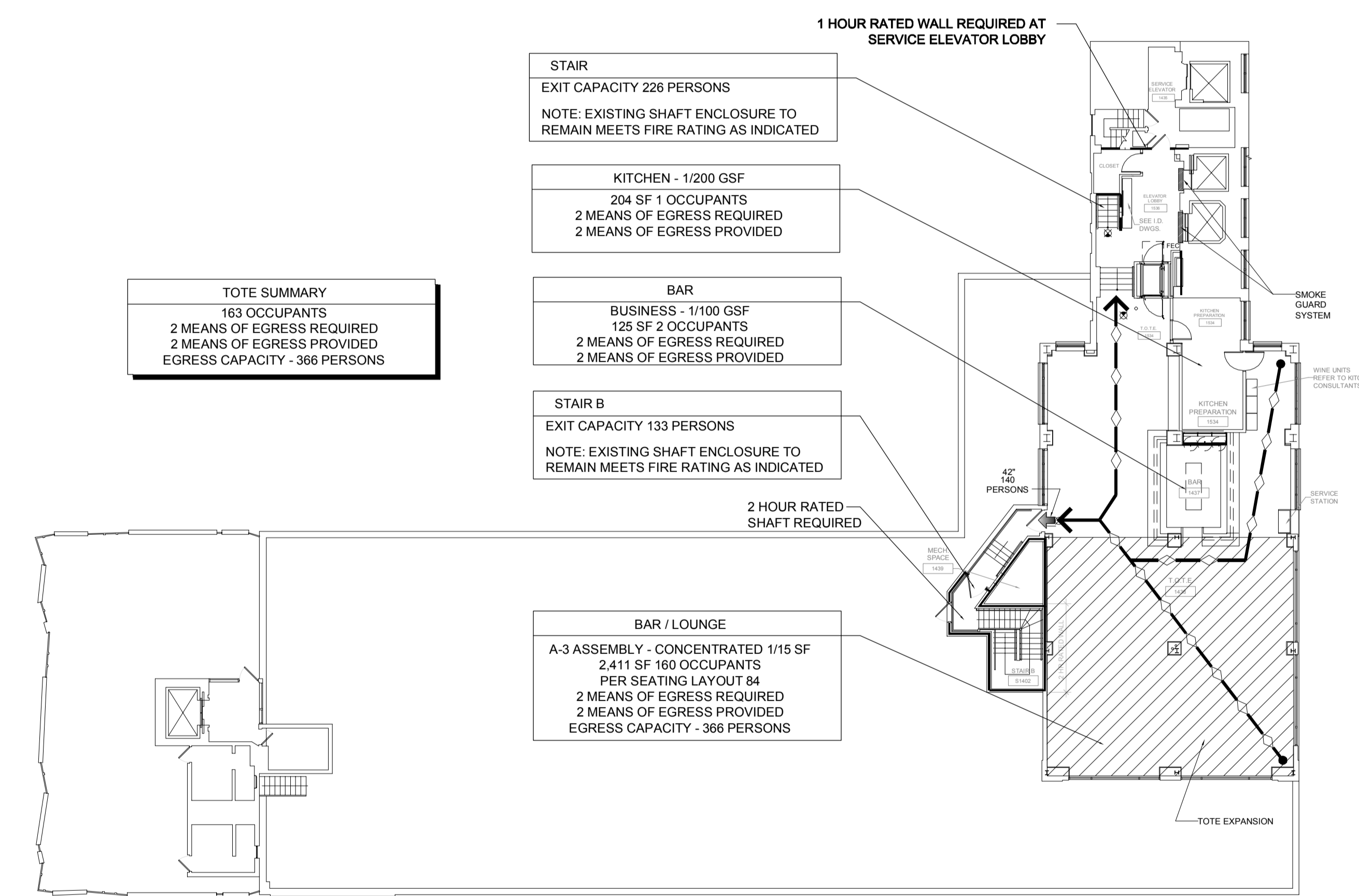
7TH, 9TH AND 11TH FLOOR LIFE SAFETY PLAN
SCALE: 1/16" = 1'-0"



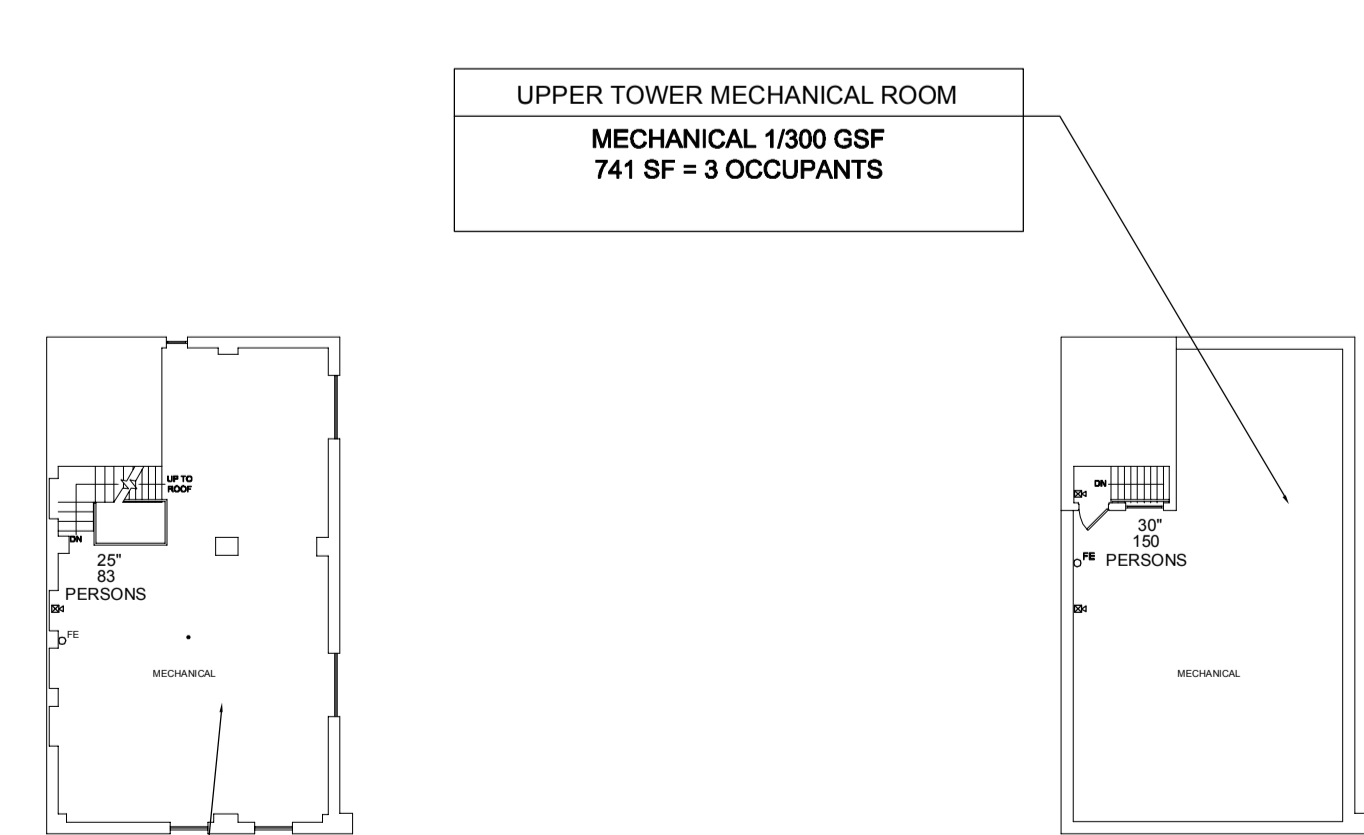
12TH FLOOR LIFE SAFETY PLAN
SCALE: 1/16" = 1'-0"



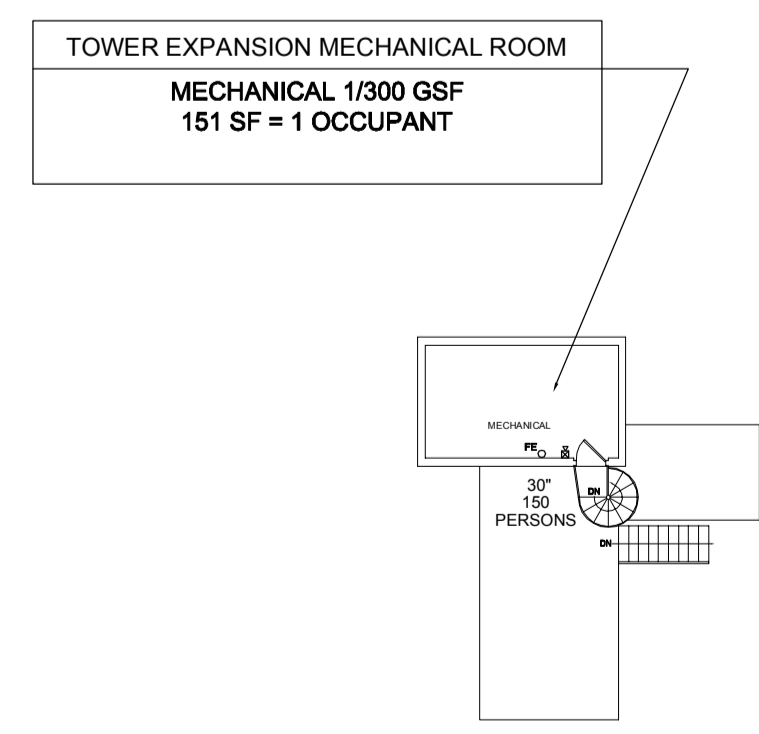
14TH FLOOR LIFE SAFETY PLAN
SCALE: 1/16" = 1'-0"



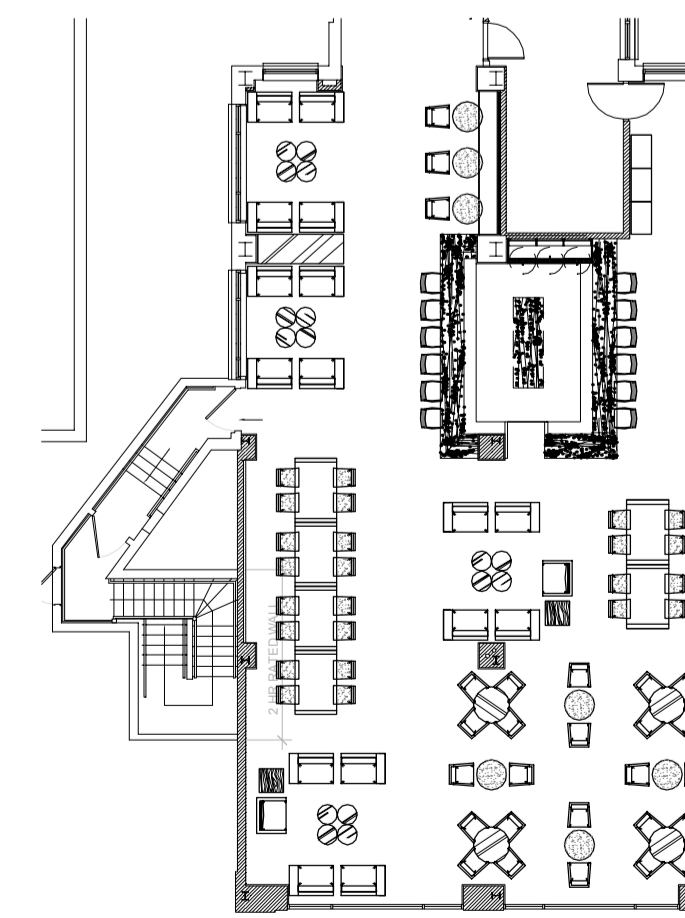
TOP OF THE EAST LIFE SAFETY PLAN
SCALE: 1/16" = 1'-0"



TOWER UPPER LEVEL FLOOR PLANS
SCALE: 1/16" = 1'-0"



TOWER EXPANSION UPPER LEVEL FLOOR PLAN
SCALE: 1/16" = 1'-0"



TOP OF THE EAST SEATING PLAN (84)
SCALE: 1/16" = 1'-0"

LEGEND

SMOKE BARRIER	---
30 MINUTES	---
ONE HOUR	---
TWO HOUR	---
PATH OF TRAVEL	---
EXISTING BOUNDARY WALL	---
NEW 2 HR. TENANT WALL	---
FIRE EXTINGUISHER	F E C
EXIT SIGN	⬇

- NOTES:
- FIRST FLOOR LEVEL IS CLASSIFIED AS NON-SEPARATED OCCUPANCIES AS DEFINED BY 2009 IBC, SECTION 503.3.
 - THE ENTIRE BUILDING IS EQUIPPED WITH AN APPROVED SPRINKLER SYSTEM IN ACCORDANCE WITH 2009 IBC, SECTION 903. AUTOMATIC SPRINKLER SYSTEM.
 - GUESTROOMS MUST BE SEPARATED FROM EACH OTHER BY 1-HOUR FIRE RESISTANCE RATED WALLS.
 - CORRIDORS SERVING RESIDENTIAL OCCUPANCIES MUST HAVE A MINIMUM FIRE RESISTANCE RATING OF AT LEAST 1/2-HOUR.
 - SHAFTS CONNECTING 4 STORIES OR MORE, INCLUDING EXIT STAIRS AND ELEVATOR SHAFTS ENCLOSURES, MUST HAVE A MINIMUM FIRE RESISTANCE RATING OF 2-HOURS.
 - LAUNDRY/TRASH CHUTE ACCESS MUST BE FROM A ROOM, NOT DIRECTLY FROM CORRIDOR, AND THE ROOM MUST HAVE A MINIMUM FIRE RESISTANCE RATING OF 1-HOUR.
 - LAUNDRY/TRASH CHUTE TERMINATION ROOMS MUST HAVE A 1-HOUR RESISTANCE RATING.
 - STC RATING FOR INTERIOR PARTITIONS MAY INCREASE FIRE RATING CONSTRUCTION NOT SHOWN ON LIFE SAFETY PLANS FOR WALL TYPE CONSTRUCTION, TYPICAL.
 - GENERAL CONTRACTOR TO CONFIRM EXISTING FIRE PARTITIONS, ADJACENT NEW PARTITIONS AS WELL AS EXISTING NOT IN SCOPE OF WORK MEET CURRENT LIFE SAFETY PLANS, TYP.
 - DUE TO FIELD CONSTRAINTS NOT ALLOWING INSTALLATION OF SMOKE DETECTOR UNDER THE EXISTING BEAMS, THESE ARE TO BE INSTALLED ON THE WALLS IMMEDIATELY BELOW THE BEAMS AS AGREED WITH THE AUTHORITY HAVING JURISDICTION.
 - PROVIDE SEMI-RECESSED FIRE EXTINGUISHERS. REFER TO PLANS FOR QUANTITY AND LOCATIONS AS REQUIRED.
 - PROVIDE SMOKE CURTAIN (SMOKE GUARD SYSTEM) AT ELEVATOR DOORS ON LEVELS 2 THRU 14 AND TOP OF THE EAST PER 2009 IBC 708.14.1.