



Issue Dates:  
 JULY 9, 2012  
 MARCH 12, 2013  
 ISSUE FOR PERMIT  
 MARCH 12, 2013  
 ISSUE FOR PERMIT  
 MAY 7, 2013  
 FIRE MARSHALL COMMENTS  
 MAY 30, 2013  
 FIRE MARSHALL MEETING &  
 CITY INSPECTION

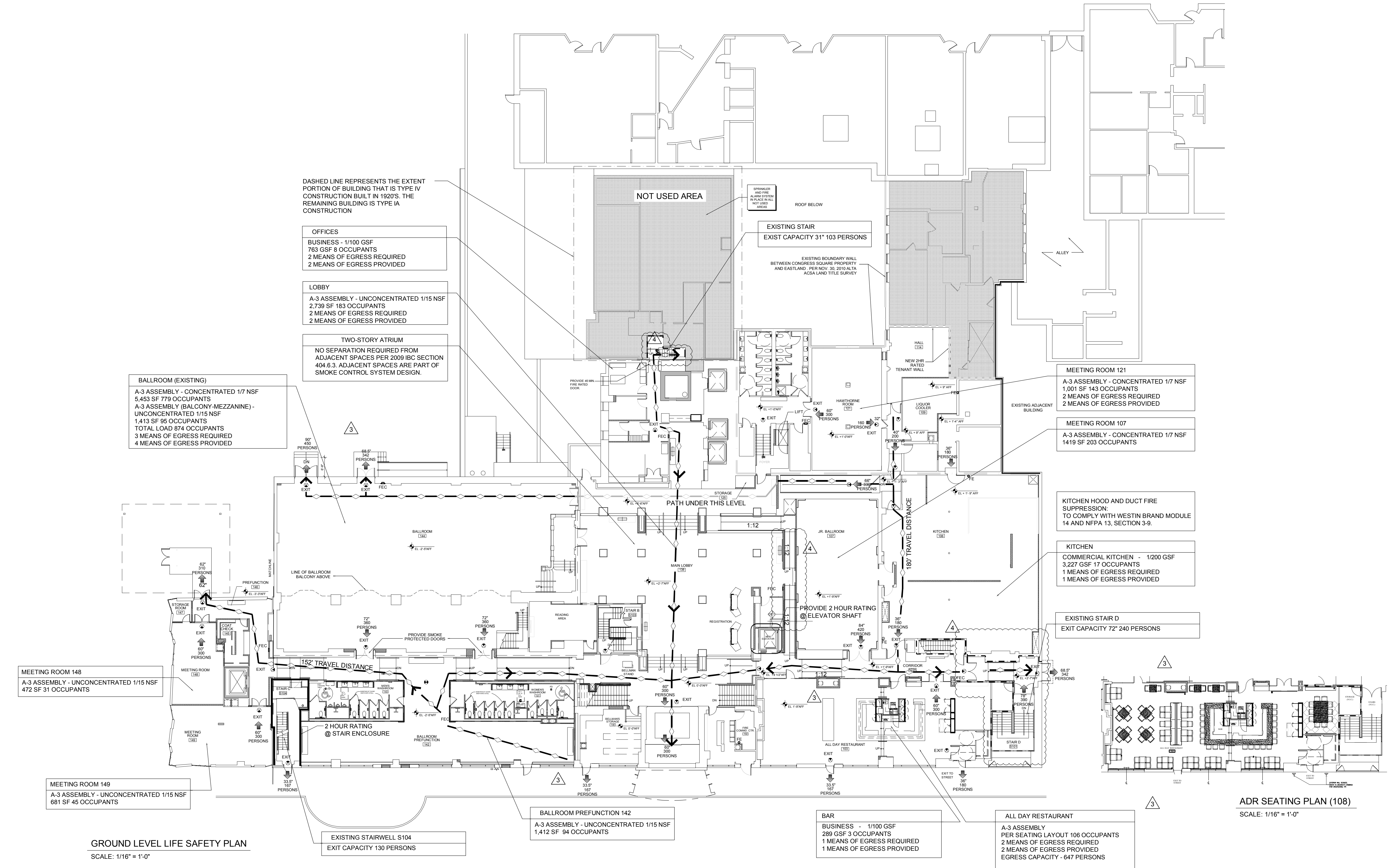
**WESTIN**  
 HOTELS & RESORTS

ROCKBRIDGE CAPITAL

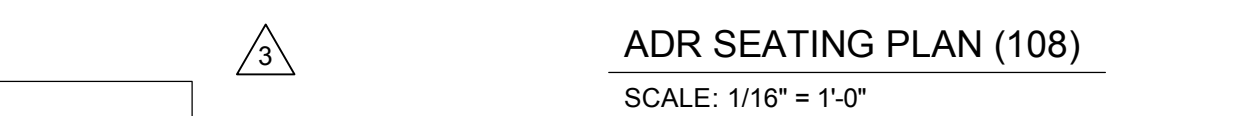
NEWCASTLE HOTELS  
 & RESORTS

CONTRACTOR  
**IDC**  
 IDC CONSTRUCTION, LLC

NOTE: UNLESS OTHERWISE SPECIFIED, ALL OCCUPANCY AND EGRESS REQUIREMENTS ARE BASED ON THE ASSUMPTIONS AND CONDITIONS SET FORTH IN THE ATTACHED DOCUMENTS AND ALL ASSOCIATED FIELD CONDITIONS. THE CONTRACTOR SHALL VERIFY THE ACTUAL OCCUPANCY AND EGRESS CAPACITY FOR EACH ROOM AND THE ACTUAL EXISTING CONDITIONS.



**GROUND LEVEL LIFE SAFETY PLAN**  
 SCALE: 1/16" = 1'-0"



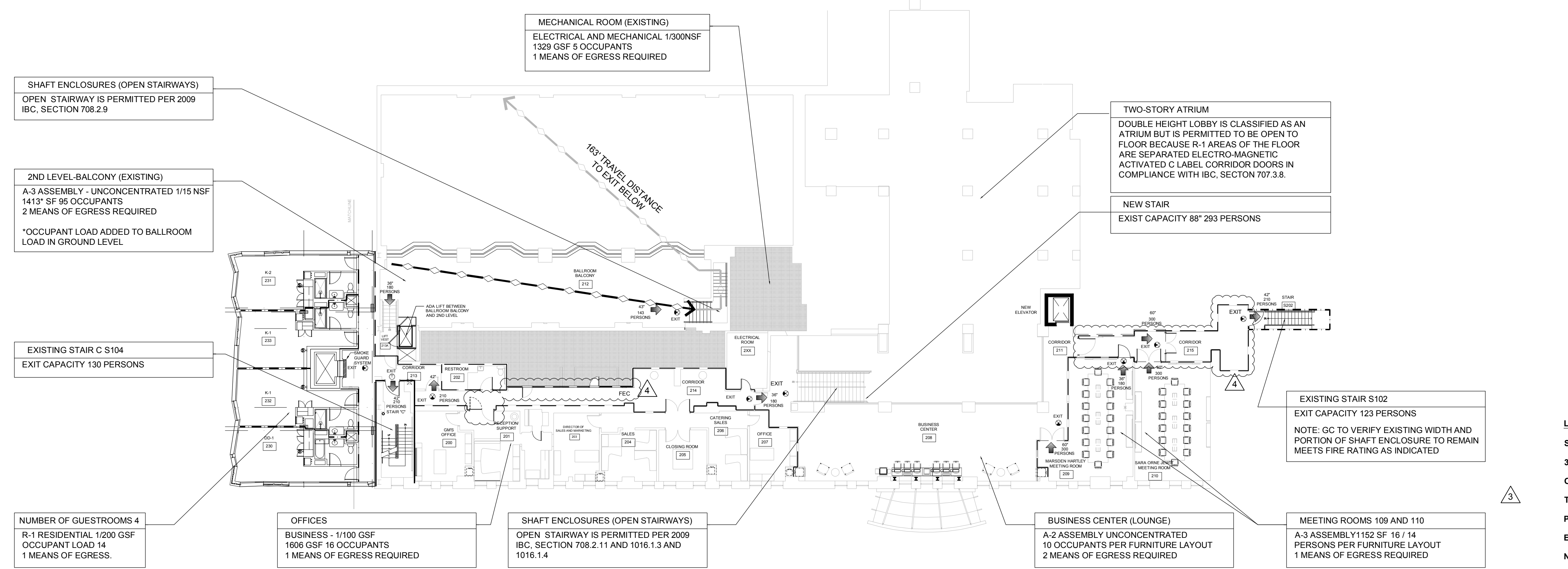
**ADR SEATING PLAN (108)**  
 SCALE: 1/16" = 1'-0"

**OCCUPANCY SUMMARY**

B-2 BASEMENT LEVEL	394 PERSONS
5 EXITS PROVIDED	780 PERSONS
B-1 BASEMENT LEVEL	2 PERSONS
2 EXITS PROVIDED	720 PERSONS
GROUND LEVEL	1,709 PERSONS
7 EXITS PROVIDED	2,044 PERSONS
2ND LEVEL	66 PERSONS
4 EXITS PROVIDED	743 PERSONS

SEE SHEET LS-102 AND LS-103 FOR GUEST ROOM LEVEL AND TOP OF THE EAST CALCULATIONS

- NOTES:
- FIRST FLOOR LEVEL IS CLASSIFIED AS NON-SEPARATED OCCUPANCIES AS DEFINED BY 2009 IBC, SECTION 508.3.
  - THE ENTIRE BUILDING IS EQUIPPED WITH AN APPROVED SPRINKLER SYSTEM IN ACCORDANCE WITH 2009 IBC, SECTION 903, AUTOMATIC SPRINKLER SYSTEM.
  - GUESTROOMS MUST BE SEPARATED FROM EACH OTHER BY 1-HOUR FIRE RESISTANCE RATED WALLS.
  - CORRIDORS SERVING RESIDENTIAL OCCUPANCIES MUST HAVE A MINIMUM FIRE RESISTANCE RATING OF AT LEAST 1 1/2-HOUR.
  - SHAFTS CONNECTING 4 STORIES OR MORE, INCLUDING EXIT STAIRS AND ELEVATOR SHAFTS ENCLOSURES, MUST HAVE A MINIMUM FIRE RESISTANCE RATING OF 2-HOURS.
  - LAUNDRY/TRASH CHUTE ACCESS MUST BE FROM A ROOM, NOT DIRECTLY FROM CORRIDOR, AND THE ROOM MUST HAVE A MINIMUM FIRE RESISTANCE RATING OF 1-HOUR.
  - LAUNDRY/TRASH CHUTE TERMINATION ROOMS MUST HAVE A 1-HOUR FIRE RESISTANCE RATING.
  - STC RATING FOR INTERIOR PARTITIONS MAY INCREASE FIRE RATING CONSTRUCTION NOT SHOWN ON LIFE SAFETY PLANS FOR WALL TYPE CONSTRUCTION, TYPICAL.
  - GENERAL CONTRACTOR TO CONFIRM EXISTING FIRE PARTITIONS, ADJACENT NEW PARTITIONS AS WELL AS EXISTING NOT IN SCOPE OF WORK MEET CURRENT LIFE SAFETY PLANS, TYP.
  - DUE TO FIELD CONSTRAINTS NOT ALLOWING INSTALLATION OF SMOKE DETECTOR UNDER THE EXISTING BEAMS, THESE ARE TO BE INSTALLED ON THE WALLS IMMEDIATELY BELOW THE BEAMS AS AGREED WITH THE AUTHORITY HAVING JURISDICTION.
  - PROVIDE SEMI-RECESSED FIRE EXTINGUISHERS. REFER TO PLANS FOR QUANTITY AND LOCATIONS AS REQUIRED.
  - PROVIDE SMOKE CURTAIN (SMOKE GUARD SYSTEM) AT ELEVATOR DOORS ON LEVELS 2 THRU 14 AND TOP OF THE EAST PER 2009 IBC 708.14.1



**2ND LEVEL LIFE SAFETY PLAN**  
 SCALE: 1/16" = 1'-0"

**LEGEND**

SMOKE BARRIER	---
30 MINUTES	---
ONE HOUR	---
TWO HOUR	---
PATH OF TRAVEL	---
EXISTING BOUNDARY WALL	---
NEW 2 HR. TENANT WALL	---
FIRE EXTINGUISHER	FEC
EXIT SIGN	EXIT

Project:  
**WESTIN EASTLAND PARK HOTEL RENOVATION FOR ROCKBRIDGE CAPITAL, LLC.**  
 157 HIGH STREET  
 PORTLAND, ME

Sheet Title:  
**GROUND & 2ND LEVEL LIFE SAFETY PLANS**

Job Number: 11009  
 Scale: 1/16" = 1'-0"  
 Drawn: IP  
 Checked: AR  
 Date: Nov. 21, 2011  
 PERMIT SET - RELEASED FOR CONSTRUCTION