

Field Report #6

No. 3917

Project: Gateway PG – Forest Ave. Façade Repairs Phase 2
Project #: WO 3917
Date/Time: April 3, 2017, 1:30 p.m.
Observers Adam Sampson, (BSE)

I visited the site to review the progress of the work and to check for general conformance with the design intent of the drawings and specifications for this project. The weather at the time of this visit was sunny and 50 degrees F.

The following observations were made:

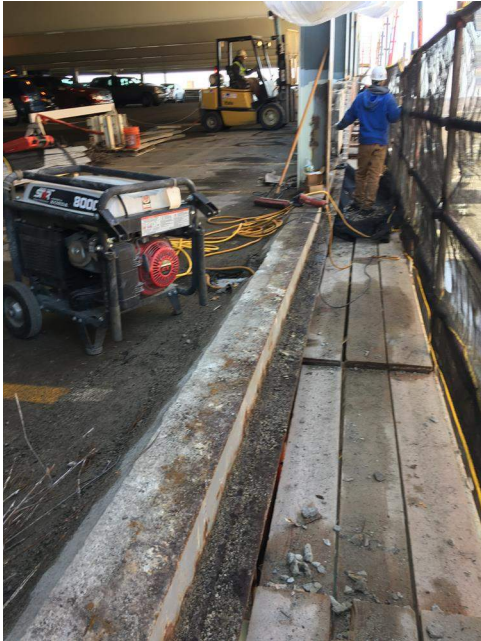
1. SCF has completed welding all column extensions at the roof level. The welds & the tops of the existing columns need to be cleaned and coated with cold galvanizing prior to painting. It was noted by SCF that a few of the existing columns were twisted and did not align with the new extensions, resulting in multiple weld passes to establish the complete joint penetration. (See photos below).



2. At the roof corner columns, a portion of the CMU wall removed to allow access to weld the column extensions. These blocks will need to be reinstated prior to the installation of masonry restraint plates. (See photo below).



3. KISC has moved the majority of the staging from the roof to level three and completed roughly half of the brick and CMU façade demo. They anticipate completing the demo by the end of the week. (See photo below).



4. Painting has been completed at levels 1, 2 and a portion of the roof level. Level 3, the roof level column extensions and touchup painting is all that remains to be completed. (See photo above).
5. SCF is in the process of drilling cable and bolt holes at levels 1 & 2. (See photo below).



CC: File, CJ Follini (Noyack), Michael Urbanski (Noyack), Bob Bold (SS+), Abdul Abukar (SS+) Tim Rich (KISC), Dan Tardif (KISC), Josh Martin-McNaughton (BSE)