

## Field Report #5

**No. 3917**

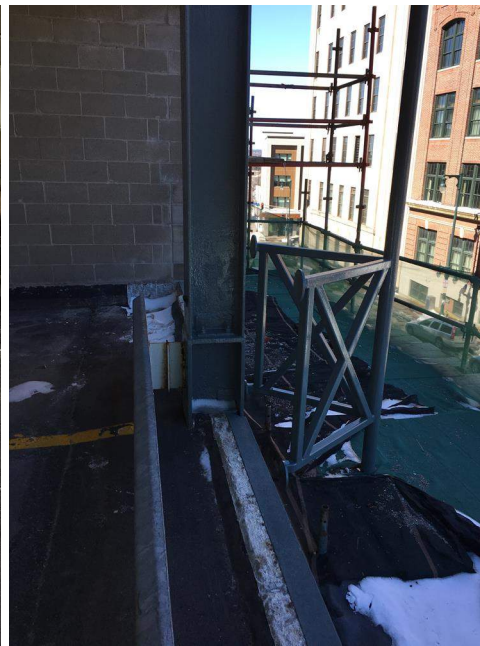
**Project:** Gateway PG – Forest Ave. Façade Repairs Phase 2  
**Project #:** WO 3917  
**Date/Time:** March 17, 2017, 1:30 p.m.  
**Observers** Adam Sampson, (BSE) Author

---

I visited the site to review the progress of the work and to check for general conformance with the design intent of the drawings and specifications for this project. The weather at the time of this visit was sunny and 35 degrees F.

The following observations were made:

1. KISC has completed the majority of the steel beam and column painting at levels one, two and the roof level. All coats had been applied at the roof level and level two. The top coat still needed to be applied at level one. (See photos below).



2. At level one, steel repairs have not been completed to the exterior steel beams. Where the section loss is visible to pedestrians, in the garage or from the street, the steel should be repaired according to the sketch previously submitted by BSE. At the ramp locations where the section loss is not directly visible, the areas showing section loss should be cut back according to the sketch provided but no steel plate is required to be welded to the beam flange. (See adjacent photos, area outlined in red to be removed).



3. KISC has repaired the corners of the CMU stair tower, and repointed the cracked joints, at the roof level and level two. At the roof level KISC has painted the CMU at the Forest Ave. façade. (See photos below).



4. Smith Custom Fabrication (SCF) was on site welding the column extensions at the roof level. SCF anticipated completing the remaining column extensions the week of March 20-24. (See photos below).





5. SCF has begun to drill holes for the HSS bumper connections at the level two columns. (See photos below).



6. KISC demoed a hole at the level three deck for the additional post supporting the HSS bumper at grid line 2.5. This location will need to be repaired to support the new post above. A hole should be demoed in the same location through roof level for the post to extend through. (See photo above.)

**CC: File, CJ Follini (Noyack), Michael Urbanski (Noyack), Bob Bold (SS+), Abdul Abukar (SS+), Tim Rich (KISC), Dan Tardif (KISC), Josh Martin-McNaughton (BSE)**