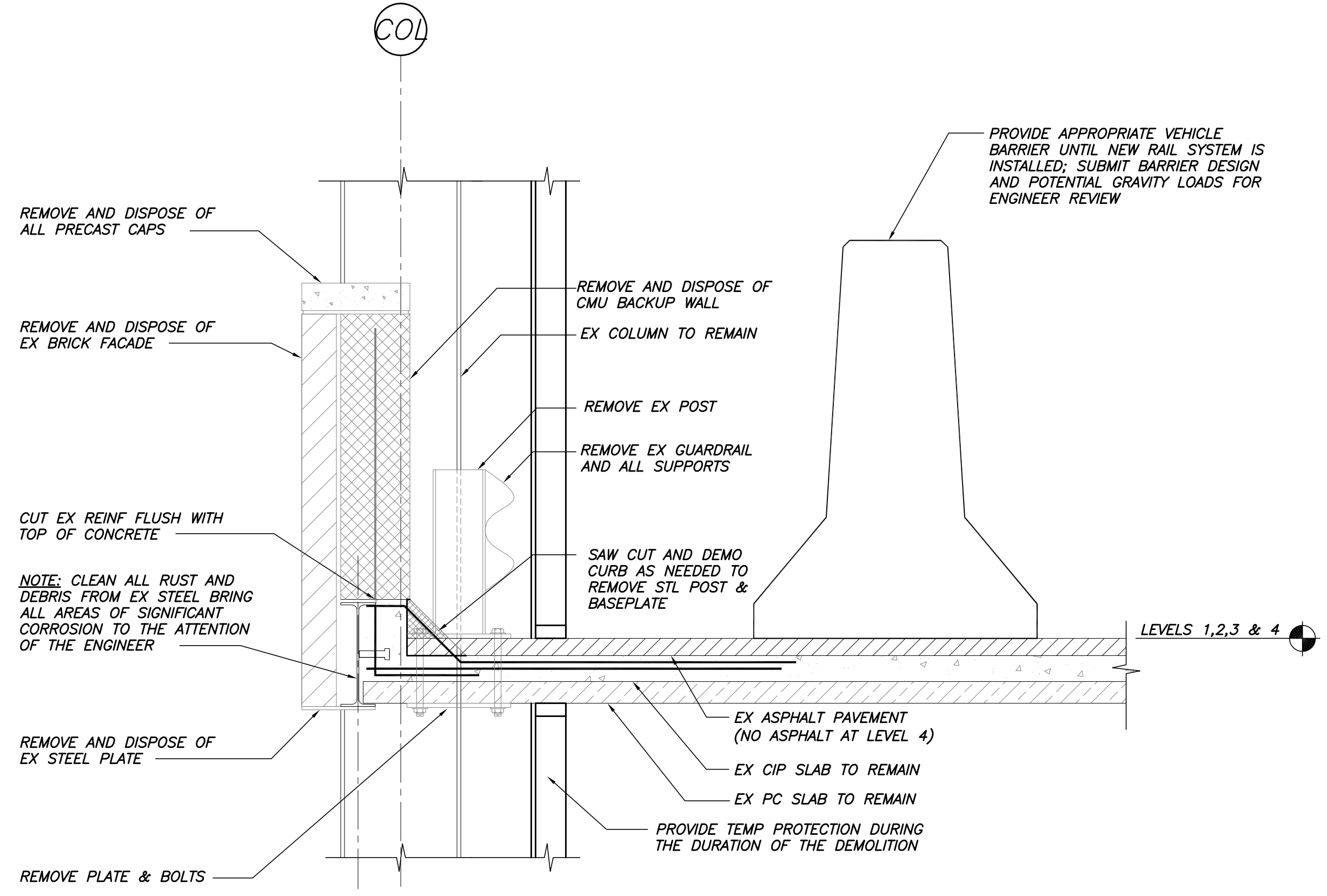
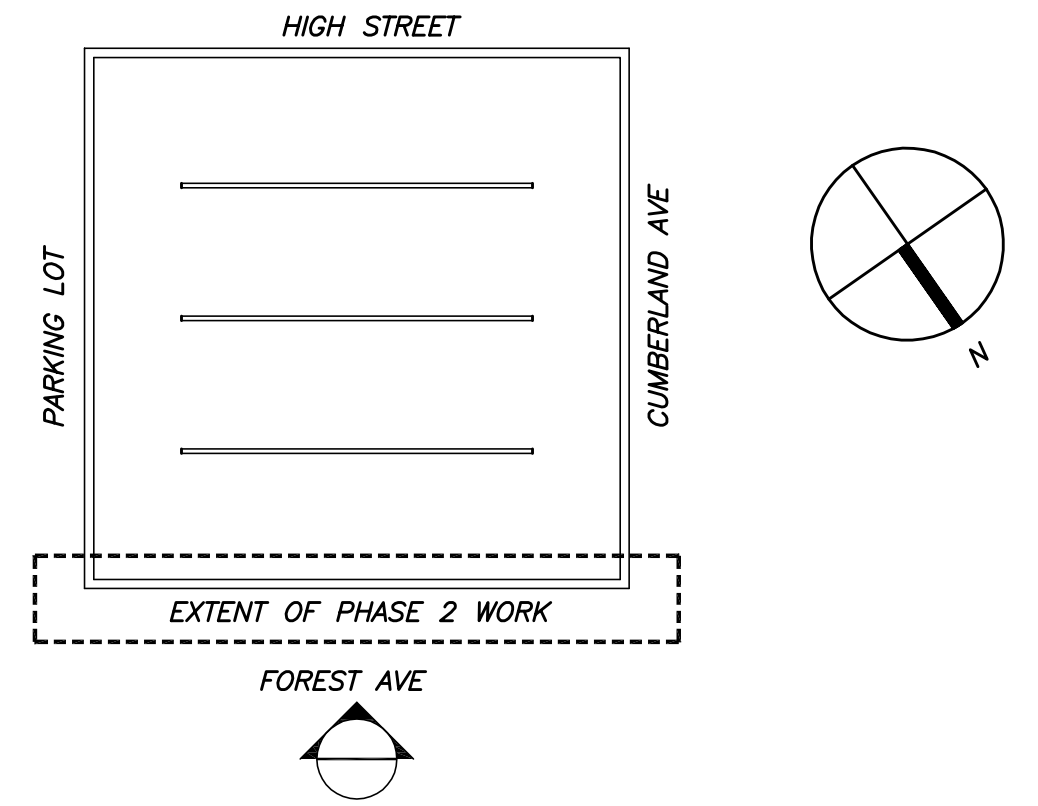
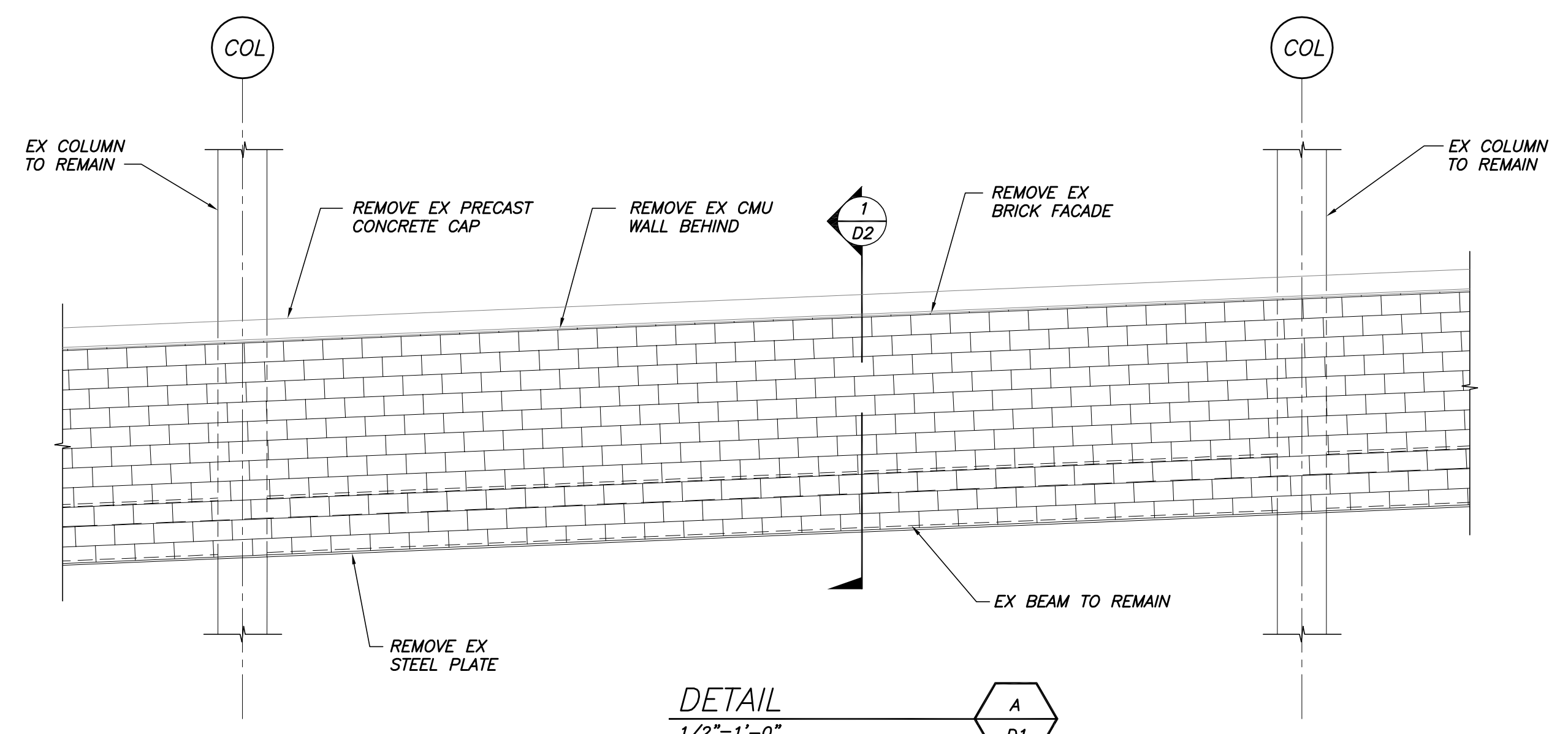


EXISTING FOREST AVE STEEL ELEVATION
3/32"=1'-0"



SECTION 1
1"=1'-0" D1



DETAIL A
1/2"=1'-0" D1

Approved	
Issued For	FOR COORDINATION FOR PERMIT
Date	12/5/16 1/18/17
Rev. No	

GATEWAY PARKING GARAGE
PORTLAND, MAINE
FACADE REPAIRS PHASE 2
DEMOLITION ELEVATION, SECTION & DETAIL

Designed	JMM	Scale	AS NOTED
Drawn	RJB	Date	12/21/16
Checked	JMM	Becker Job Number	3917

D2

THIS DRAWING IS AN INSTRUMENT OF SERVICE AND SHALL REMAIN THE PROPERTY OF BECKER STRUCTURAL ENGINEERS INC. IT SHALL NOT BE REPRODUCED, COPIED, LENT OR DISPOSED OF DIRECTLY OR INDIRECTLY, NOR USED FOR ANY PURPOSE OTHER THAN FOR WHICH IT IS SPECIFICALLY FURNISHED AND MUST BE RETURNED TO BECKER STRUCTURAL ENGINEERS INC. ON COMPLETION OF WORK, IF REQUESTED.