

Field Report #6

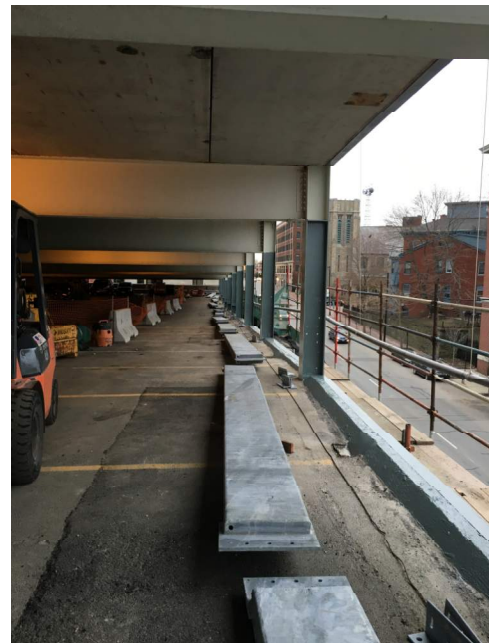
No. 3521

Project: Gateway PG – High St Façade Repairs Phase 1
Project #: WO 3521
Date/Time: December 9, 2015, 8:00 AM.
Observers Adam Sampson (BSE) (Author), Josh Martin-McNaughton (BSE), Tim Rich (KISC), Dan Tardiff (KISC)

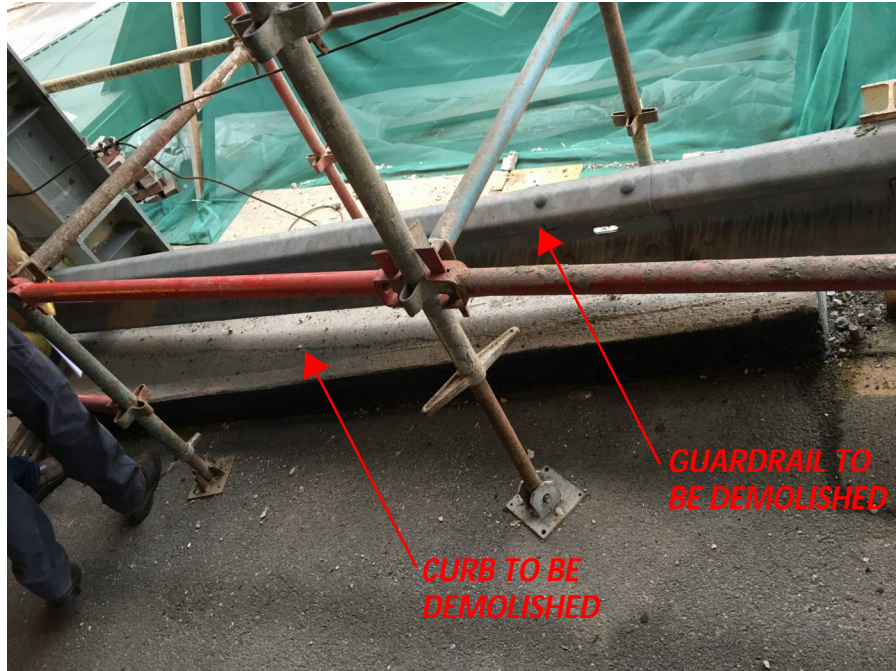
I visited the site to review the progress of the work and to check for general conformance with the design intent of the drawings and specifications for this project. The weather at the time of this visit was overcast and 30 degrees F.

The following observations were made:

1. Knowles Industrial Services (KISC) has removed all of the brick and CMU façade from level one and two. Smith Custom Fabrication (SCF) has drilled cable and bolt holes at level one and two, and is ready to install HSS bumpers at level two. (See photos below).



2. At level one BSE advised KISC to demolish the raised concrete curb to column line ten. The adjacent concrete curb will need to be repaired, and cold patch asphalt will be used to repair the drive surface. (See photo below).



3. BSE advised KISC to clean, prime and paint the green frame of the sign at the entrance. (See photo below).
4. KISC needs to remove all debris and steel braces from the condo roof. If there is any remaining work to be done from this roof plywood protection should be installed. (See photo below).



5. KISC is using paint that has been approved by the manufacturer to be used in cold weather.

-
6. KISC is scheduled to complete the installation of the bumper tubes this week and install the cables and fencing next week. KISC is scheduled to demobilize from the site the week of December 21st.
 7. BSE is scheduled to perform a punch list walkthrough on December 17th.

CC: File, City of Portland Inspections Office, CJ Follini (Noyack), Michael Urbanski (Noyack), Bob Bold (SSPlus) Tim Rich (KISC), Todd Neal (BSE), Joshua Martin-McNaughton (BSE)