

## Field Report #5

No. 3521

**Project:** Gateway PG – High St Façade Repairs Phase 1  
**Project #:** WO 3521  
**Date/Time:** November 23, 2015, 2:00 p.m.  
**Observers** Adam Sampson (BSE) (Author), Josh Martin-McNaughton (BSE)

---

I visited the site to review the progress of the work and to check for general conformance with the design intent of the drawings and specifications for this project. The weather at the time of this visit was mostly sunny and 40 degrees F.

The following observations were made:

1. Knowles Industrial Services (KISC) has removed the brick and CMU façade from level one between column lines 13 and 10 and begun setting up the staging and removing the façade from level two. Smith Custom Fabrication (SCF) has installed HSS bumpers and Constructive Services has post tensioned all cables, and installed fencing at levels three and four. (See photos below).



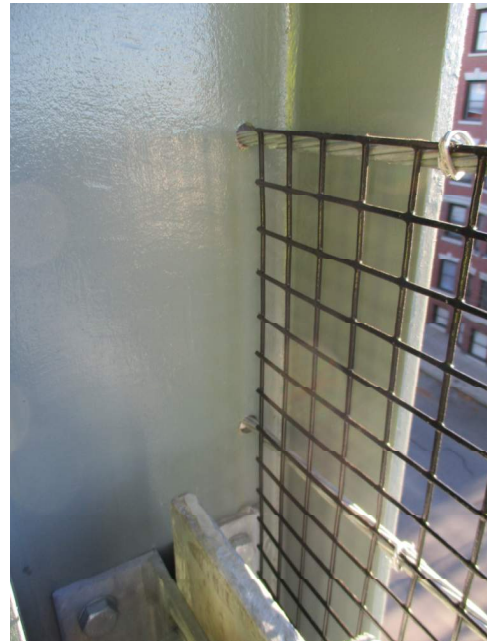


2. At level one KISC has demoed past column line 10 for access to install the HSS bumper and pedestrian cables. A portion of the CMU and brick façade will need to be rebuilt up to the column after the bumpers and cables/fencing has been installed. (See photo below).



3. Due to the asphalt wash and column splice plates at level two, SCF had to raise steel clip angles for the HSS bumpers. SCF was concerned the post tension cable would be hitting the clip angle but after review of the shop drawings it appears the cable will be above the clips. (See photo above).

4. SCF has begun welding angles to support the data cable at level two. Due to the poor condition of the steel beam bottom flange, SCF was advised to weld the support angles to the web of the steel beam. (See photo below).



5. At the start of the sloped bays, hard plastic cable sheathing needs to be installed at each post tensioned cable to prevent galvanizing from rubbing off. (See photo above).
6. KISC has repaired the majority of the asphalt potholes. Cold patch asphalt will be required at concrete repairs and other locations not yet repaired. Line stripping has been completed. (See photos below).



- 
7. With the colder day and night temperatures, the contractor needs to review the manufacturer cold weather surface and air temperature application recommendations. Paint should be stored in warming boxes just prior to application and not stored outside.

**CC: File, City of Portland Inspections Office, CJ Follini (Noyack), Michael Urbanski (Noyack), Bob Bold (SSPlus) Tim Rich (KISC), Todd Neal (BSE), Joshua Martin-McNaughton (BSE)**