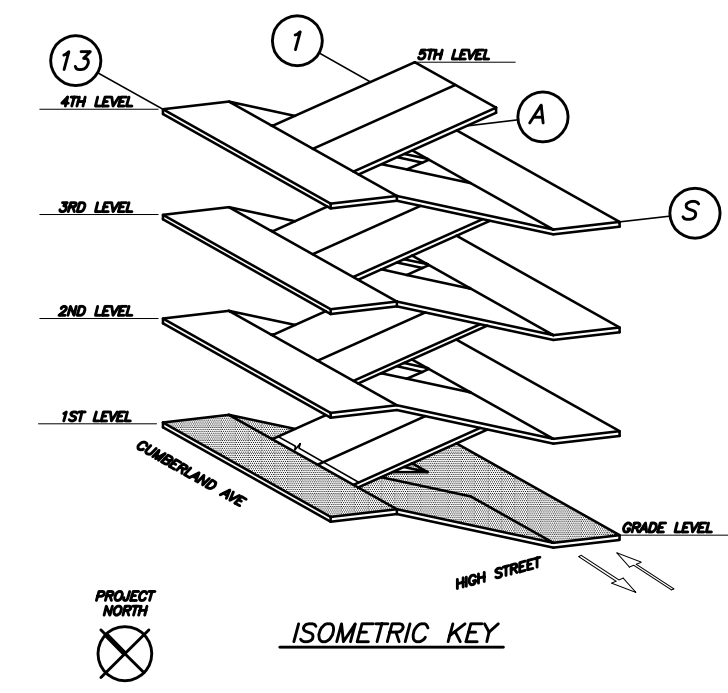
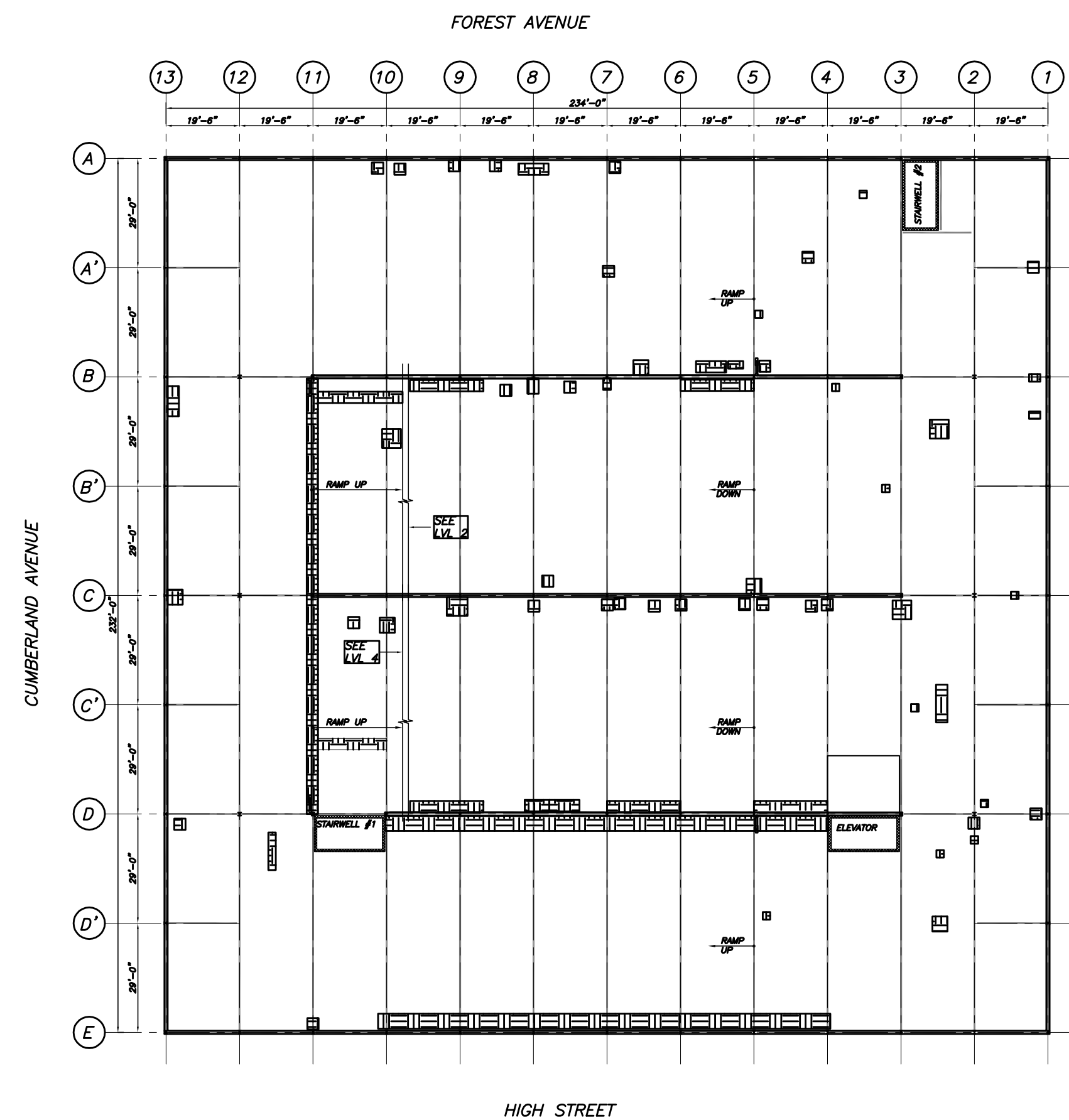


LEVEL 1 - PAVEMENT REPAIRS 310 SF
 LEVEL 1 - SURFACE PLAN
 1/32"=1'-0"

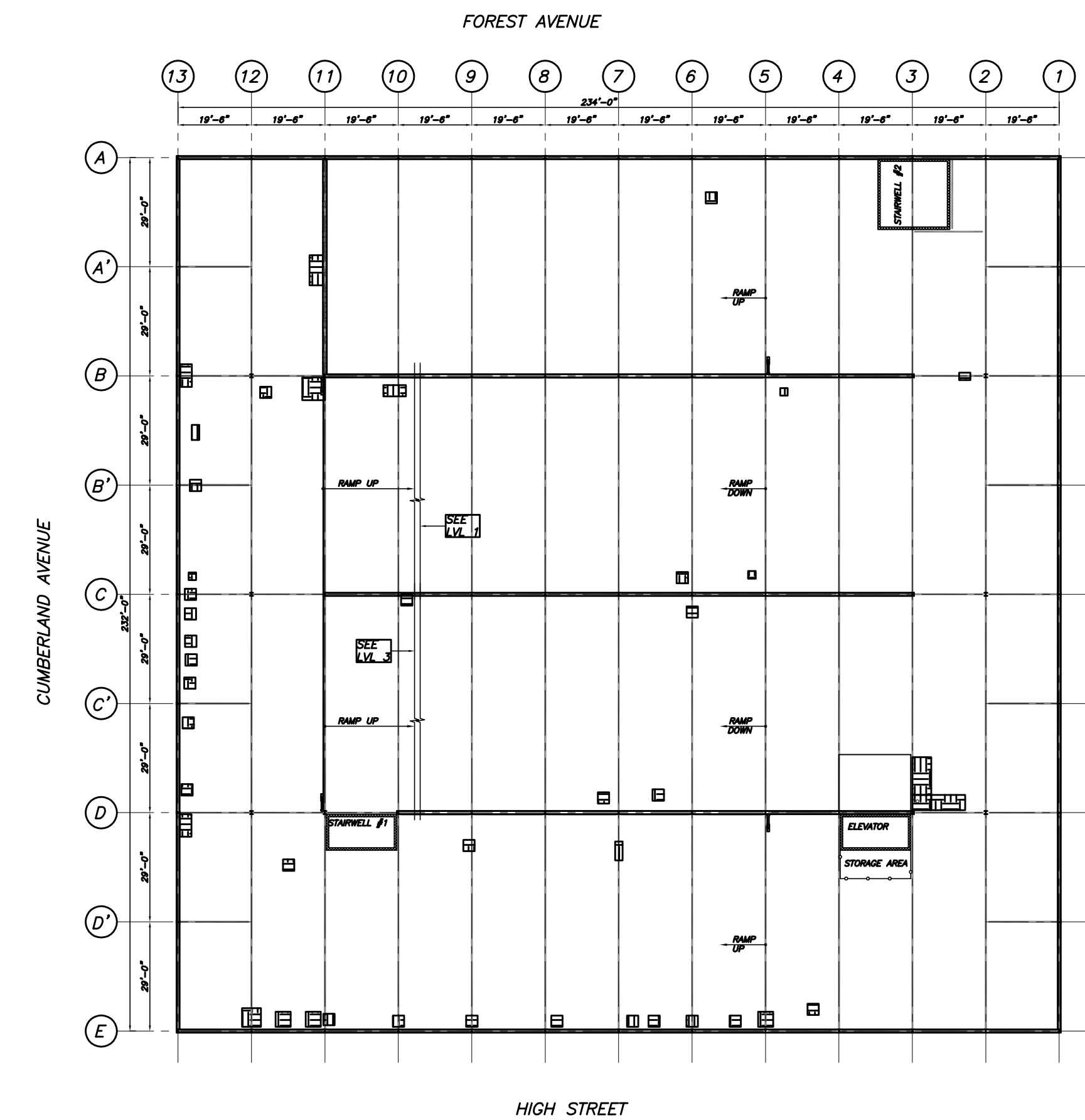
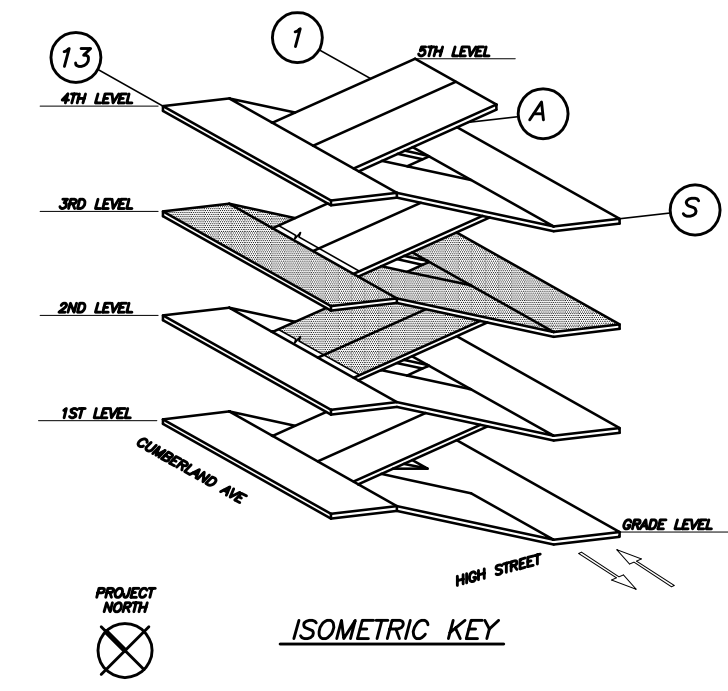


- PAVEMENT REPAIR AND STRIPPING NOTES:**
1. CONTRACTOR IS ALLOWED 30 SPACES AT ONE TIME.
 2. NEATLY SAW CUT AND REMOVE LOOSE PAVEMENT, POTHOLES, RIDGES, TRIPPING HAZARDS AND HEAVED PAVEMENT AS INDICATED ON THE DRAWING.
 3. PROVIDE SQUARE CORNERS AND UNIFORM REPAIR AREA. REMOVE ASPHALT PAVEMENT DOWN TO THE EX WATERPROOFING MEMBRANE OR CONCRETE DECK.
 4. REMOVE DEBRIS FROM REPAIR AREA BY SWEEPING AND VACUUM.
 5. DO NOT PUNCTURE OR DAMAGE EXISTING WATERPROOFING MEMBRANE.
 6. PREPARE EXISTING PAVEMENT PERIMETER BY HEATING REPAIR AREA WITH TORCH TO SOFTEN THE EXISTING PAVEMENT. PRIME OR APPLY BONDING AGENT TO THE REPAIR AREA AS RECOMMENDED BY THE MANUFACTURER.
 7. OVERFILL REPAIR AREA AND COMPACT WITH MECHANICAL VIBRATOR LEVEL WITH THE EXISTING PAVEMENT. DO NOT ALLOW TRAFFIC ON REPAIR FOR 24 HOURS OR AS RECOMMENDED BY THE MANUFACTURER.
 8. AFTER COMPLETION OF PAVEMENT REPAIRS, RESTRIPE ALL PARKING DECK LEVELS. STRIPING INCLUDES BUT IS NOT LIMITED TO PARKING STALLS, DIRECTIONAL ARROWS, NO PARKING ZONES, ACCESSIBLE MARKINGS AND CURBS. CONTRACTOR IS REQUIRED TO DOCUMENT AND VERIFY LOCATION OF EXISTING MARKINGS PRIOR TO DEMOLITION. RESTRIPE ALL LEVELS 1-5 (ROOF DECK). PRIVATE GARAGE AT LEVEL 1 NOT INCLUDED IN SCOPE OF WORK.

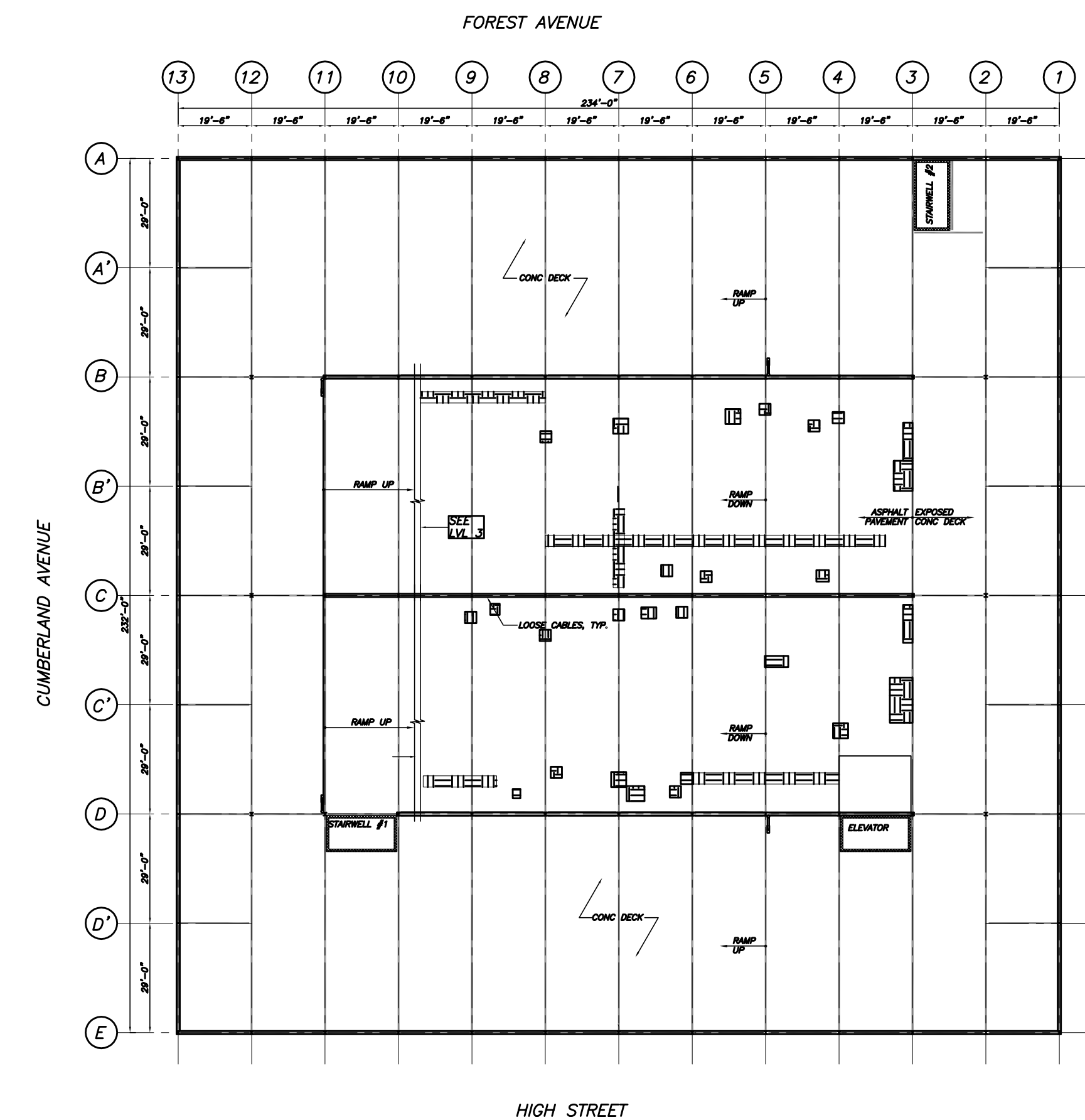
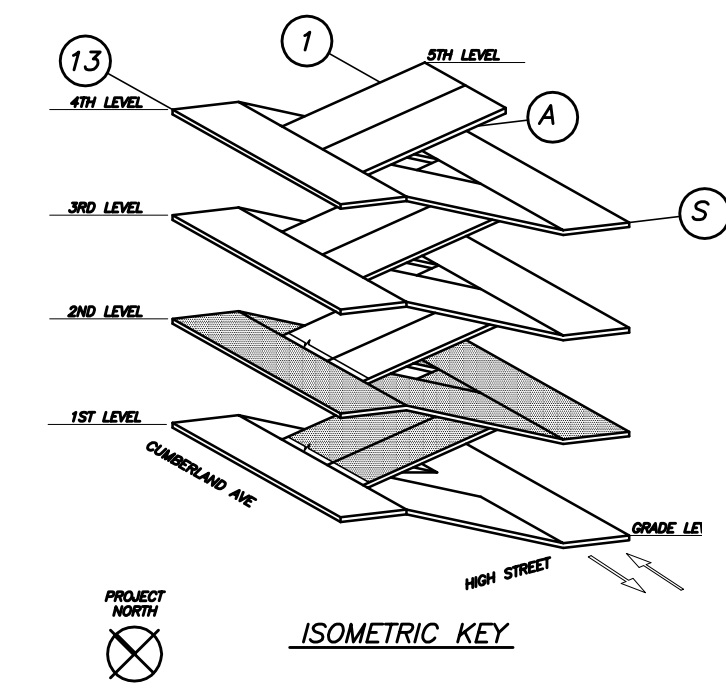
LEGEND
 [Symbol] ASPHALT PAVEMENT POTHOLE, LOOSE ASPHALT, RIDGES AND HEAVED PAVEMENT. PATCH AND REPAIR POTHOLE WITH NEW ASPHALT PAVEMENT. REFER PAVEMENT REPAIR NOTES THIS SHEET.



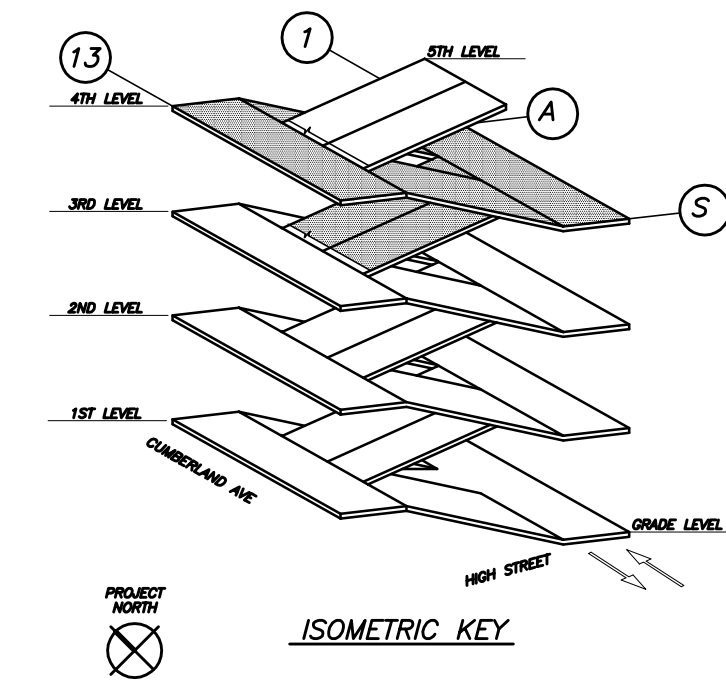
LEVEL 3 - PAVEMENT REPAIRS 2355 SF
 LEVEL 3 - SURFACE PLAN
 1/32"=1'-0"



LEVEL 2 - PAVEMENT REPAIRS 568 SF
 LEVEL 2 - SURFACE PLAN
 1/32"=1'-0"



LEVEL 4 - PAVEMENT REPAIRS 1025 SF
 LEVEL 4 - SURFACE PLAN
 1/32"=1'-0"



THIS DRAWING IS AN INSTRUMENT OF SERVICE AND SHALL REMAIN THE PROPERTY OF BECKER STRUCTURAL ENGINEERS INC. IT SHALL NOT BE REPRODUCED, COPIED, LENT OR DISPOSED OF DIRECTLY OR INDIRECTLY, NOR USED FOR ANY PURPOSE OTHER THAN FOR WHICH IT IS SPECIFICALLY FURNISHED AND MUST BE RETURNED TO BECKER STRUCTURAL ENGINEERS INC. ON COMPLETION OF WORK, IF REQUESTED.

BECKER
 STRUCTURAL ENGINEERS
 75 New Street, Portland, Maine 04101
 207.875.8538 • beckerstructural.com

STATE OF MAINE
 TODD M. NEAL
 NO. 9406
 LICENSED PROFESSIONAL ENGINEER

| | |
|--------------|--------------------|
| Approved For | |
| Issued For | FOR BID FOR PERMIT |
| Date | 5/27/15 |
| Rev. No | 6/30/15 |

GATEWAY PARKING GARAGE
 PORTLAND, MAINE
 FACADE REPAIRS PHASE 1
 PAVING REPAIR PLAN

| | | | |
|----------|-----|-------------------|----------|
| Designed | JMM | Scale | AS NOTED |
| Drawn | ATS | Date | 5/27/15 |
| Checked | TMN | Becker Job Number | 3521 |

S5