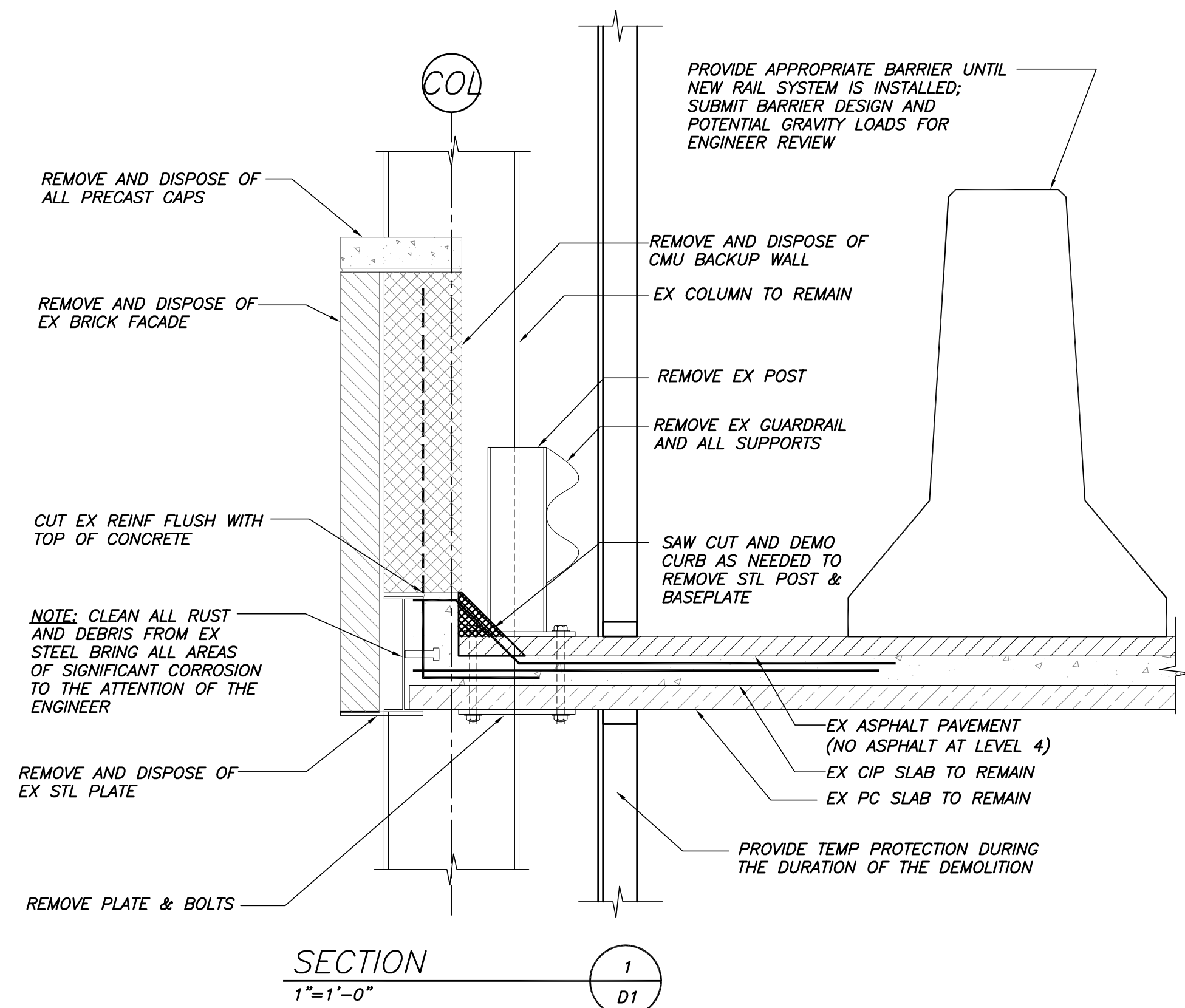
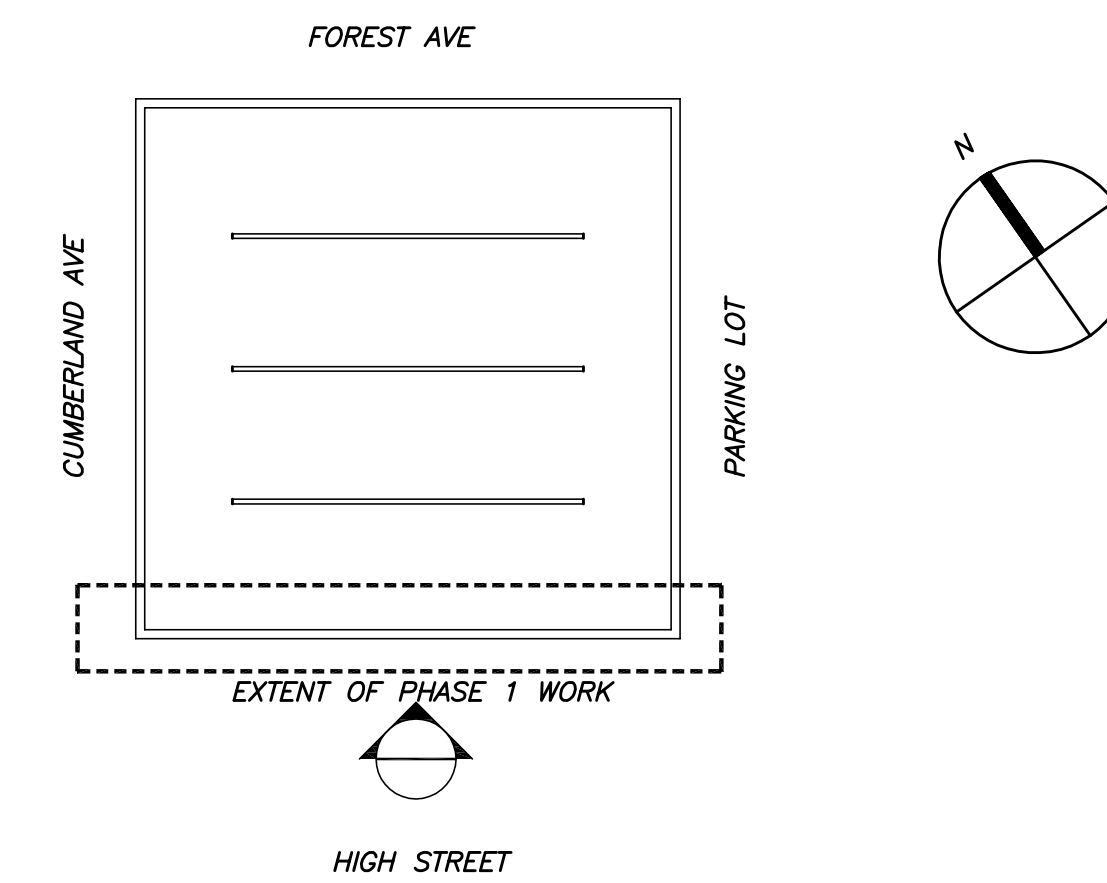
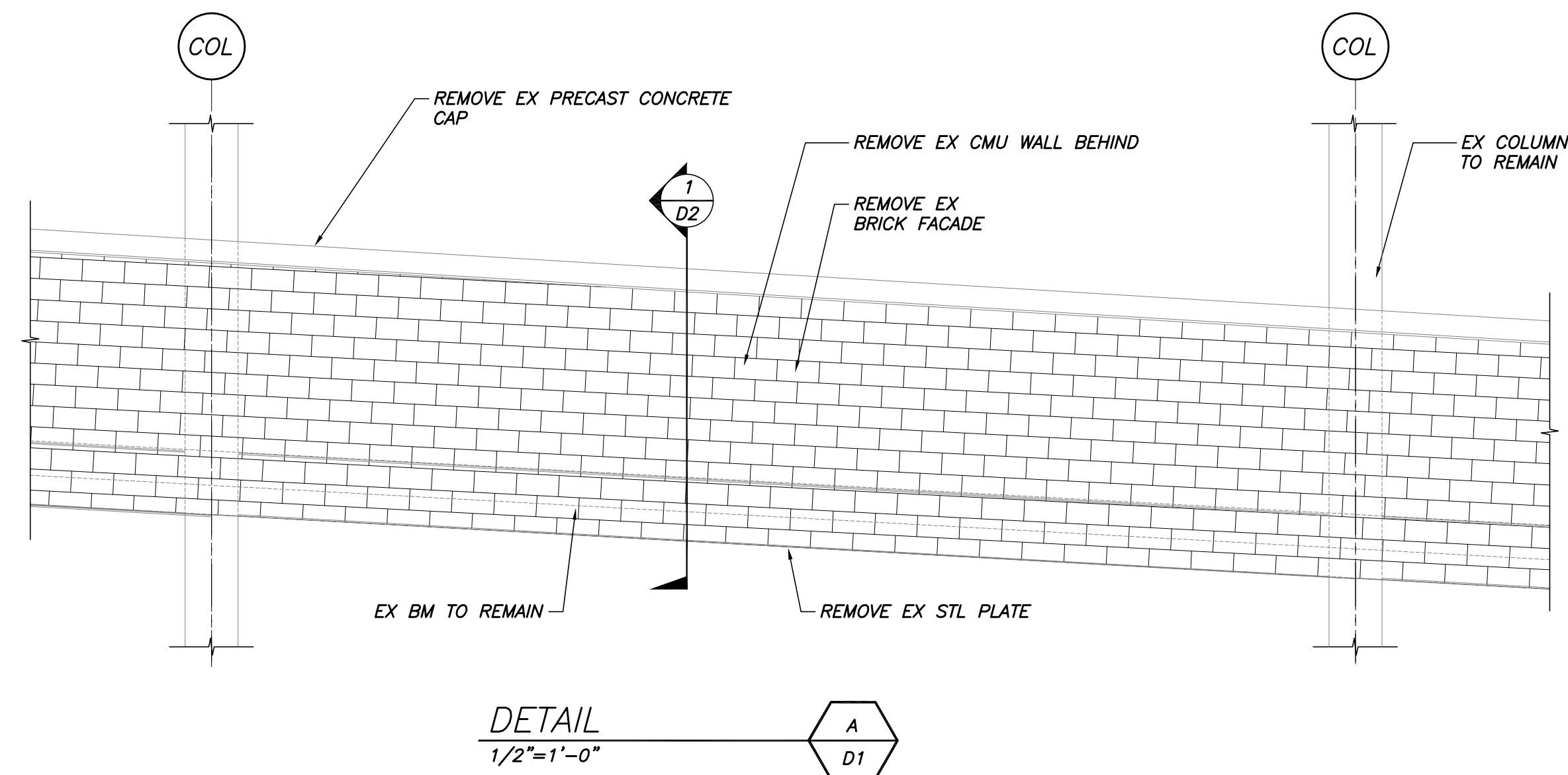


EXISTING HIGH ST STEEL ELEVATION
3/32"=1'-0"



SECTION
1
1"=1'-0"



DETAIL
A
1/2"=1'-0"

Appr'd	
Issued For	FOR BID FOR PERMIT
Date	5/27/15
Rev. No	6/30/15

GATEWAY PARKING GARAGE
PORTLAND, MAINE
FACADE REPAIRS PHASE 1
DEMOLITION

Designed	JMM	Scale	AS NOTED
Drawn	ATS	Date	5/27/15
Checked	TMN	Becker Job Number	3521

D2

THIS DRAWING IS AN INSTRUMENT OF SERVICE AND SHALL REMAIN THE PROPERTY OF BECKER STRUCTURAL ENGINEERS INC. IT SHALL NOT BE REPRODUCED, COPIED, LENT, OR DISPOSED OF DIRECTLY OR INDIRECTLY, NOR USED FOR ANY PURPOSE OTHER THAN FOR WHICH IT IS SPECIFICALLY FURNISHED AND MUST BE RETURNED TO BECKER STRUCTURAL ENGINEERS INC. ON COMPLETION OF WORK, IF REQUESTED.