

Drawn By: REW
Checked By: JSL
Project Mgr: IAM
Project No: 03053
Code File: 03053.DWG
Graphic: 0
Scale: 1"

NUMBER	DATE	BY	DESCRIPTION

allied *engineering, inc.*
FULL SERVICE CONSULTING ENGINEERS
STRUCTURAL • MECHANICAL • ELECTRICAL • ENVIRONMENTAL • CONSTRUCTION ADMINISTRATION
One Franklin Center, Westbrook, Maine 04092-2001
Tel: 207-664-4120 Fax: 207-664-4000
E-Mail: info@allied-engineers.com Website: www.allied-engineers.com



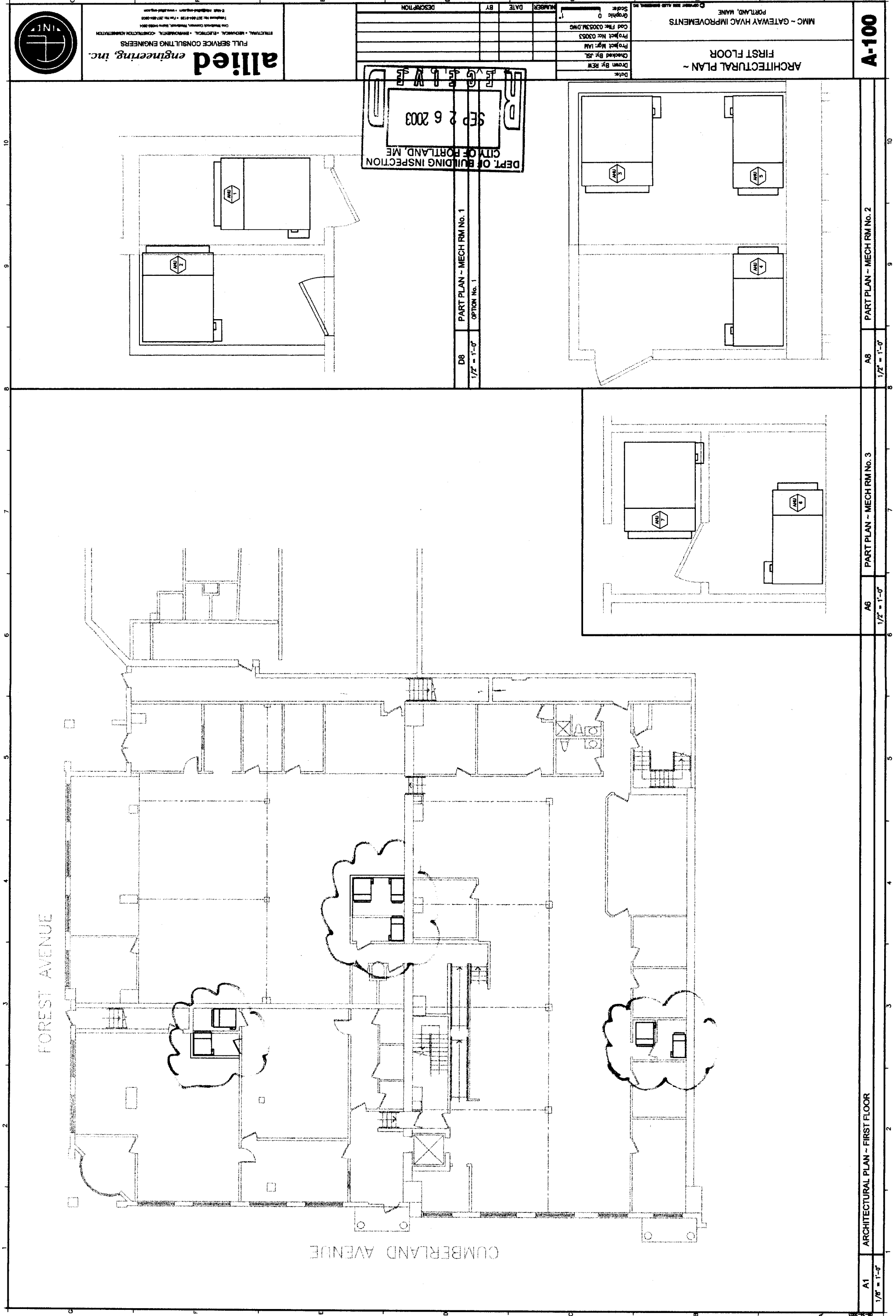
DEPT. OF BUILDING INSPECTION
 CITY OF PORTLAND, ME
 SEP 26 2003
 BUREAU

D8 PART PLAN - MECH RM No. 1
 1/2" = 1'-0" OPTION No. 1

A8 PART PLAN - MECH RM No. 2
 1/2" = 1'-0"

A6 PART PLAN - MECH RM No. 3
 1/2" = 1'-0"

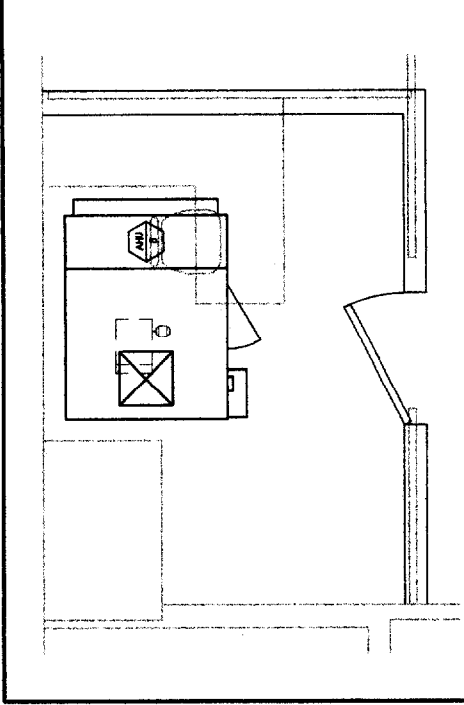
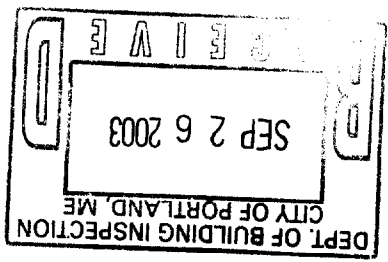
A1 ARCHITECTURAL PLAN - FIRST FLOOR
 1/8" = 1'-0"



Date:	
Drawn By:	REW
Checked By:	IAM
Project Mgr:	IAM
Project No:	03053
Code:	03053M.DWG
Scale:	1"
Graphic:	0

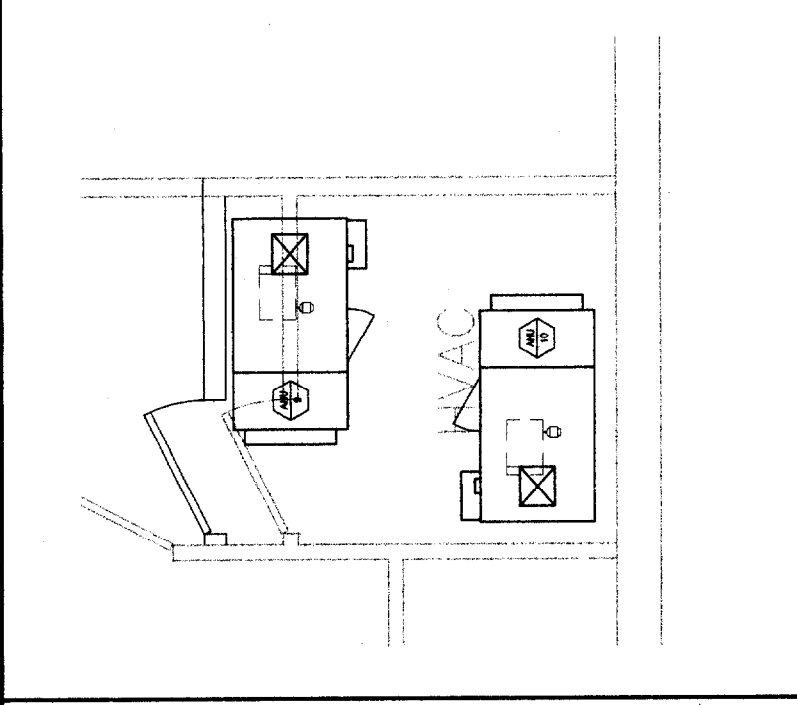
REVISIONS	NUMBER	DATE	BY	DESCRIPTION

allied *engineering, inc.*
FULL SERVICE CONSULTING ENGINEERS
STRUCTURAL - MECHANICAL - ELECTRICAL - ENVIRONMENTAL - CONSTRUCTION ADMINISTRATION
ONE THURGOOD CHURCH BUILDING, PORTLAND, MAINE 04101
Tel: 207.854.8128 Fax: 207.854.8121
www.allied-eng.com



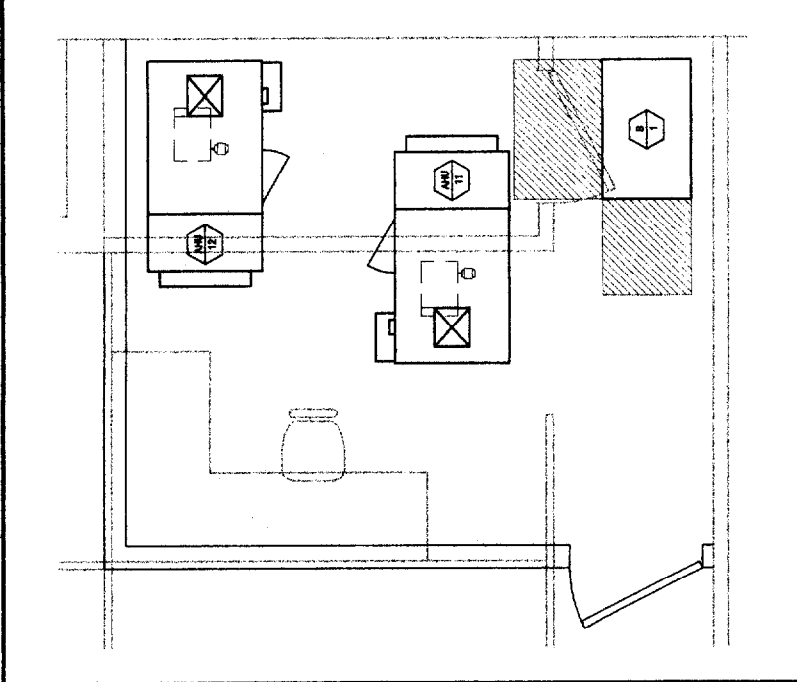
PART PLAN - PROPOSED MECH RM No. 8

D8
1/2" = 1'-0"



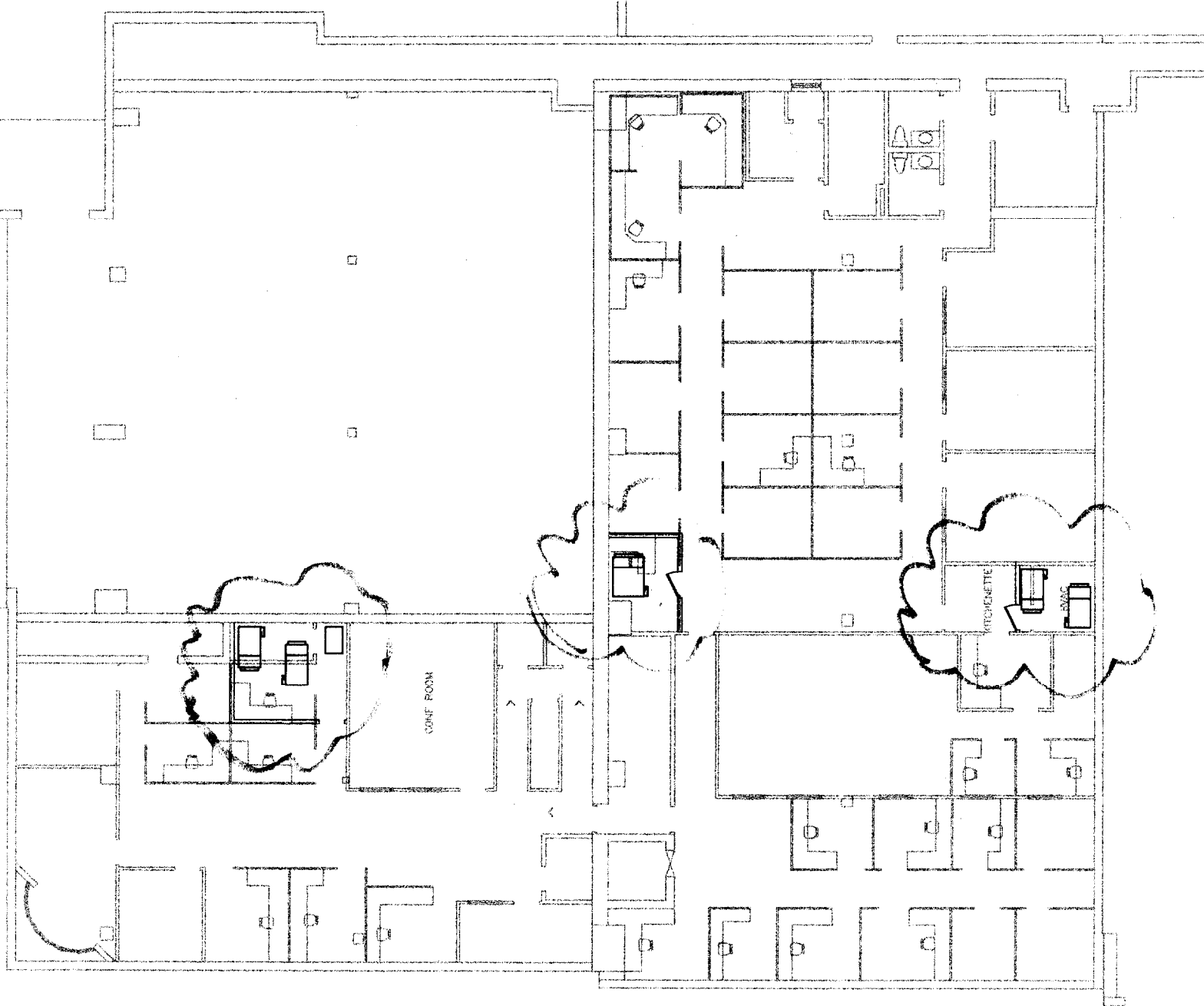
PART PLAN - MECH RM No. 6

A6
1/2" = 1'-0"



PART PLAN - MECH RM No. 7

A6
1/2" = 1'-0"



ARCHITECTURAL PLAN - SECOND FLOOR

A1
1/2" = 1'-0"



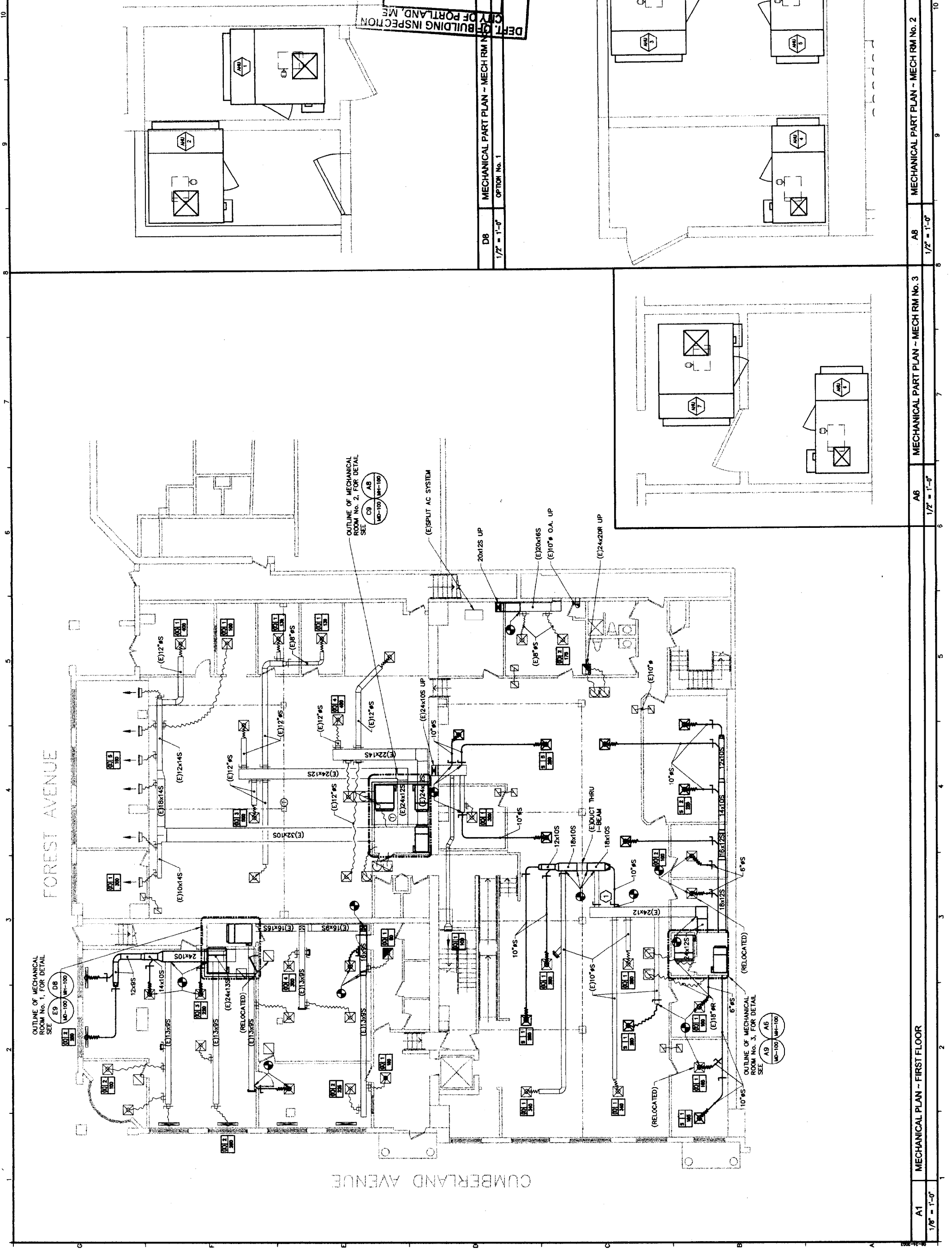
allied
engineering, inc.
FULL SERVICE CONSULTING ENGINEERS
MECHANICAL - ELECTRICAL - PLUMBING - ENVIRONMENTAL - COMMERCIAL ARCHITECTURE
1000 Exchange Street, Portland, ME 04101
Tel: 603-761-1111 Fax: 603-761-1112
E-Mail: info@alliedeng.com www.alliedeng.com

NUMBER	DATE	BY	DESCRIPTION
1			

MMC - GATEWAY HVAC IMPROVEMENTS
PORTLAND, MAINE
MECHANICAL PLAN - FIRST FLOOR
Project No: 03083
Code File: 03053M.DWG
Project Mgr: JAM
Checked By: SL
Drawn By: REM
Date:

MH-100

DEPT. OF BUILDING INSPECTION
CITY OF PORTLAND, ME
SEP 26 2003



D8 MECHANICAL PART PLAN - MECH RM No. 1
1/2" = 1'-0"

A8 MECHANICAL PART PLAN - MECH RM No. 2
1/2" = 1'-0"

A6 MECHANICAL PART PLAN - MECH RM No. 3
1/2" = 1'-0"

A1 MECHANICAL PLAN - FIRST FLOOR
1/8" = 1'-0"

OUTLINE OF MECHANICAL ROOM No. 1, FOR DETAIL SEE E9 DB MD-100 MH-100

OUTLINE OF MECHANICAL ROOM No. 2, FOR DETAIL SEE C9 A8 MD-100 MH-100

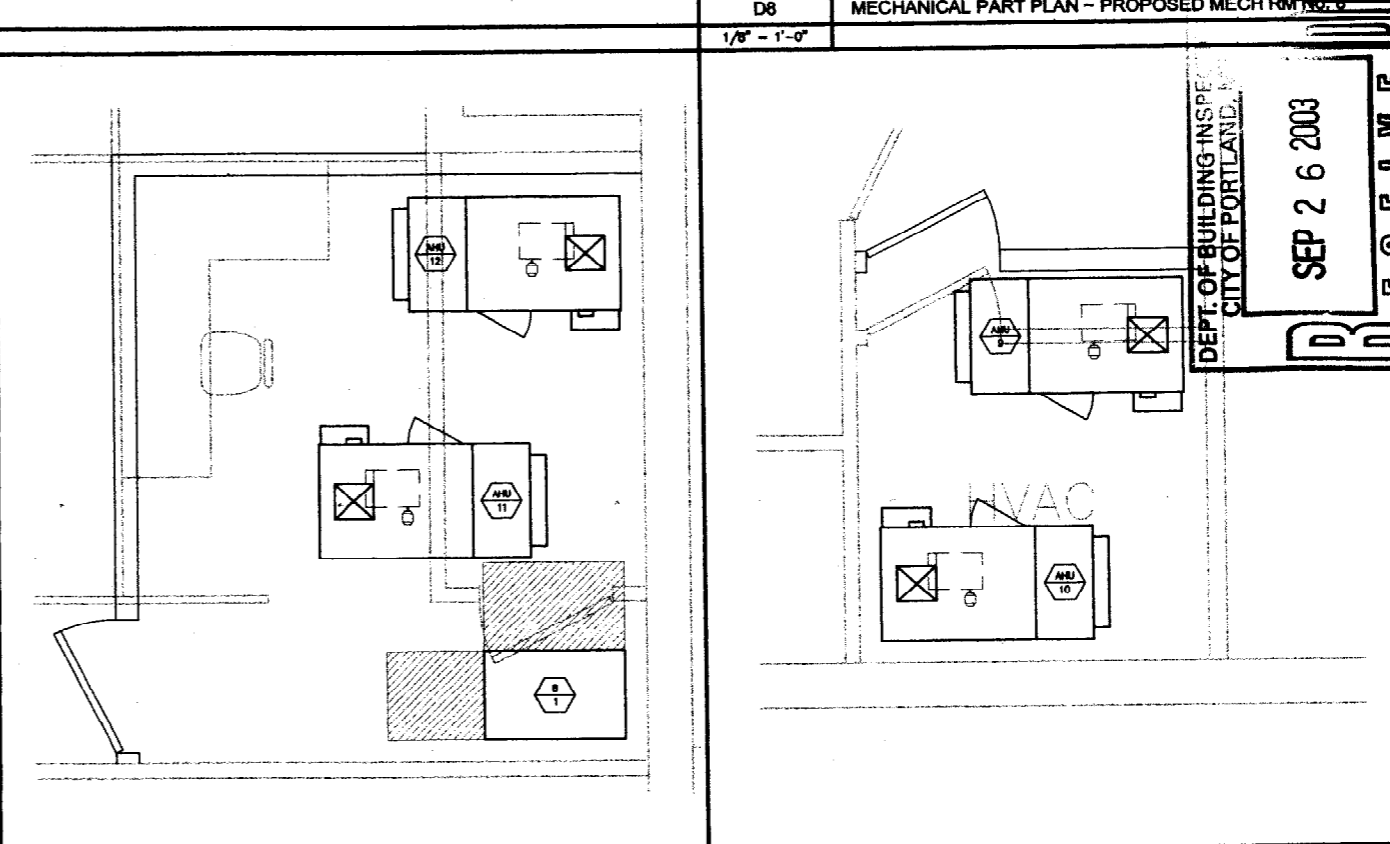
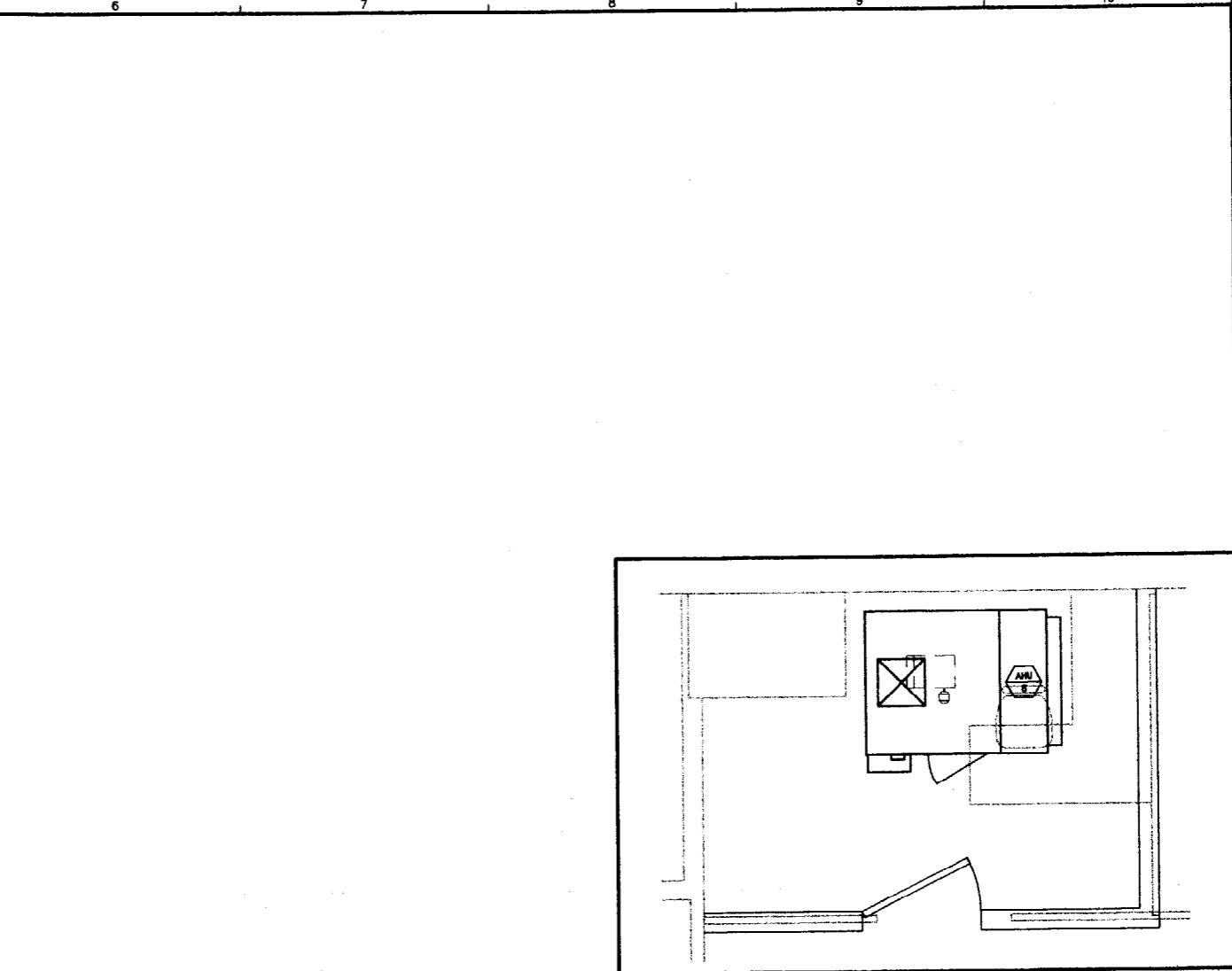
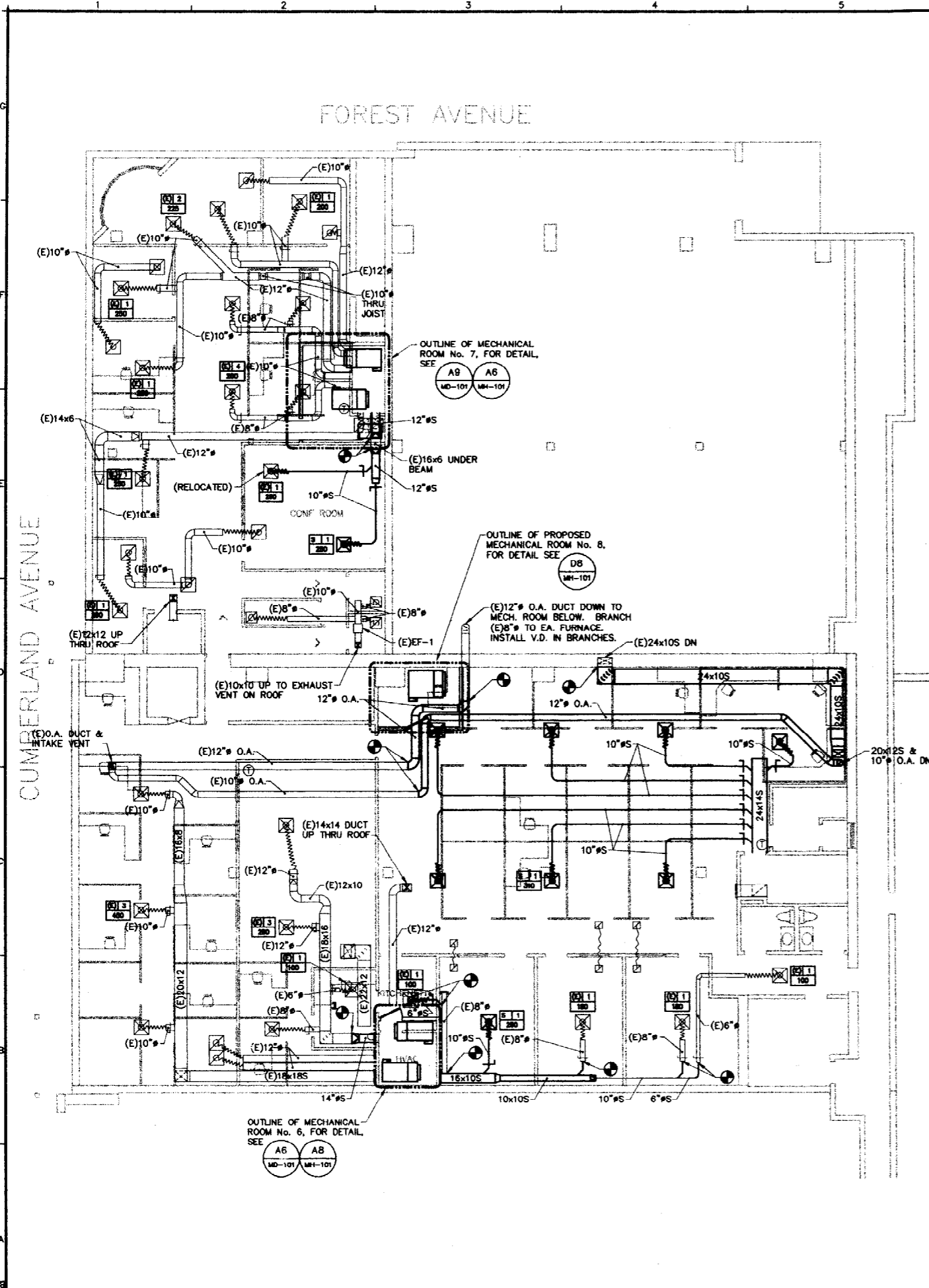
OUTLINE OF MECHANICAL ROOM No. 3, FOR DETAIL SEE A9 A6 MD-100 MH-100

FOREST AVENUE

CUMBERLAND AVENUE



allied engineering, inc.
 FULL SERVICE CONSULTING ENGINEERS
 STRUCTURAL • MECHANICAL • ELECTRICAL • ENVIRONMENTAL • CONSTRUCTION ADMINISTRATION
 One Washington Common, Westbrook, Maine 04092-3801
 Telephone No. 207-684-9128 • Fax No. 207-684-0288
 E-Mail: info@alliedeng.com • www.alliedeng.com



A1 1/8" = 1'-0"	MECHANICAL PLAN - SECOND FLOOR	A6 1/2" = 1'-0"	MECHANICAL PART PLAN - MECH RM No. 7	A8 1/2" = 1'-0"	MECHANICAL PART PLAN - MECH RM No. 6
--------------------	--------------------------------	--------------------	--------------------------------------	--------------------	--------------------------------------

VISIONS		NUMBER	DATE	BY	DESCRIPTION
		0			

MH-101

MECHANICAL PLAN - SECOND FLOOR
 MMC - GATEWAY HVAC IMPROVEMENTS
 PORTLAND, MAINE

DEPT. OF BUILDING INSPECTION
 CITY OF PORTLAND
 SEP 26 2003

REVISED

Drawn By: REW
 Checked By: JAM
 Project Mgr: JAM
 Project No: 03063
 Cad File: 03063.DWG
 Graphic Scale: 1" = 1'-0"