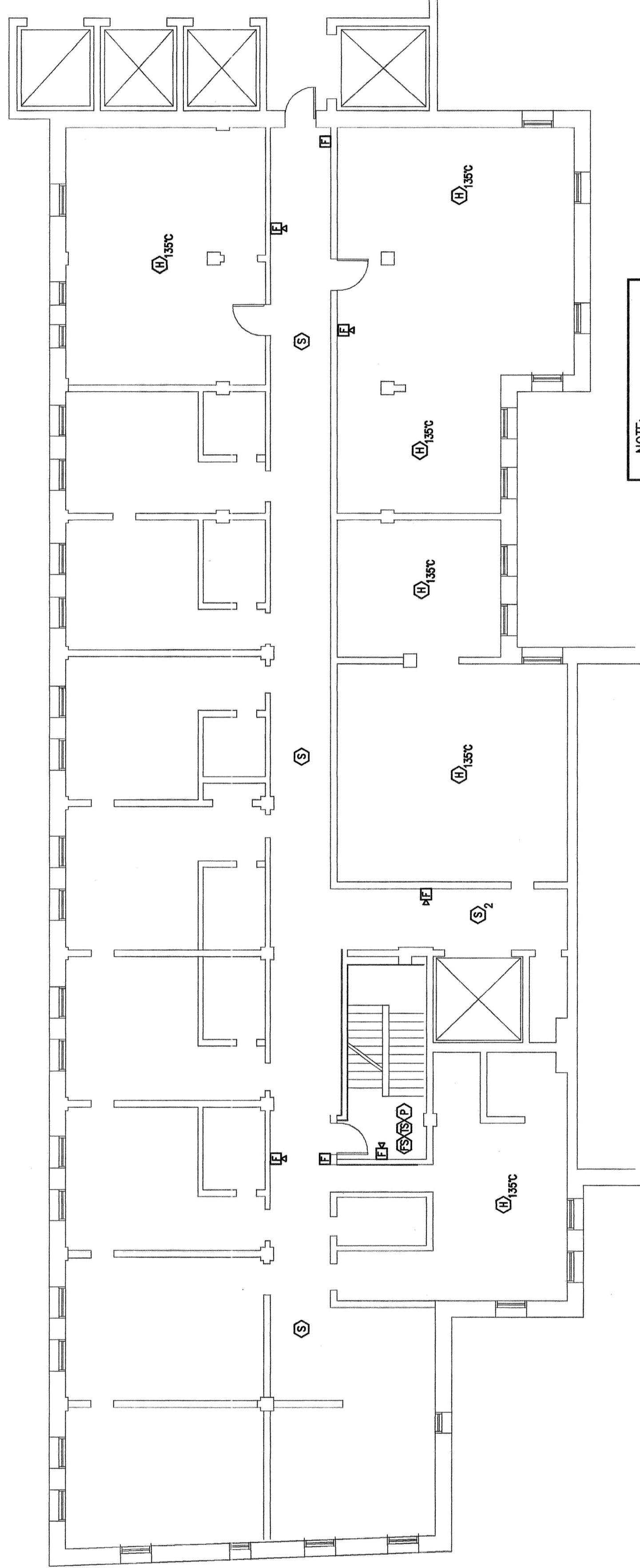
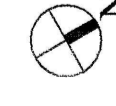


CONGRESS STREET

FOREST AVENUE

KEY PLAN
SCALE: NONE



NOTE:
PROVIDE FIRE ALARM COVERAGE AS
GENERAL USAGE SPACE.

SEVENTH FLOOR
SCALE: 1/8" = 1'-0"

BID SET
FEBRUARY 4, 2005



E7

SEVENTH FLOOR
ELECTRICAL MODIFICATIONS AND
NEW FIRE ALARM SYSTEM

Drawing:

Scale: 1/8" = 1'-0"

Checked: AWM

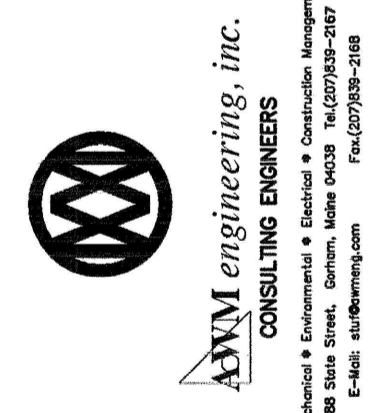
Date: 2-4-05

Drawn: CLC

Project:
RENOVATION OF
CONGRESS SQUARE PLAZA
10 CONGRESS STREET
PORTLAND, MAINE 04101

Architect:
ARCHETYPE, P.A.
ARCHITECTS
48 Union Wharf Portland, Maine 04101
(207) 772-6022 Fax (207) 772-4056

Owner:
HARBOR MANAGEMENT CO.
23 CENTRAL AVENUE
SUITE 710
LYNN, MA 01901



AWM engineering, inc.
CONSULTING ENGINEERS
Professional Engineers & Surveyors License No. 10000
Lynn, MA 01901
Tel: 781-326-1000 Fax: 781-326-1008