

**FIRE ALARM / SECURITY SYSTEMS**

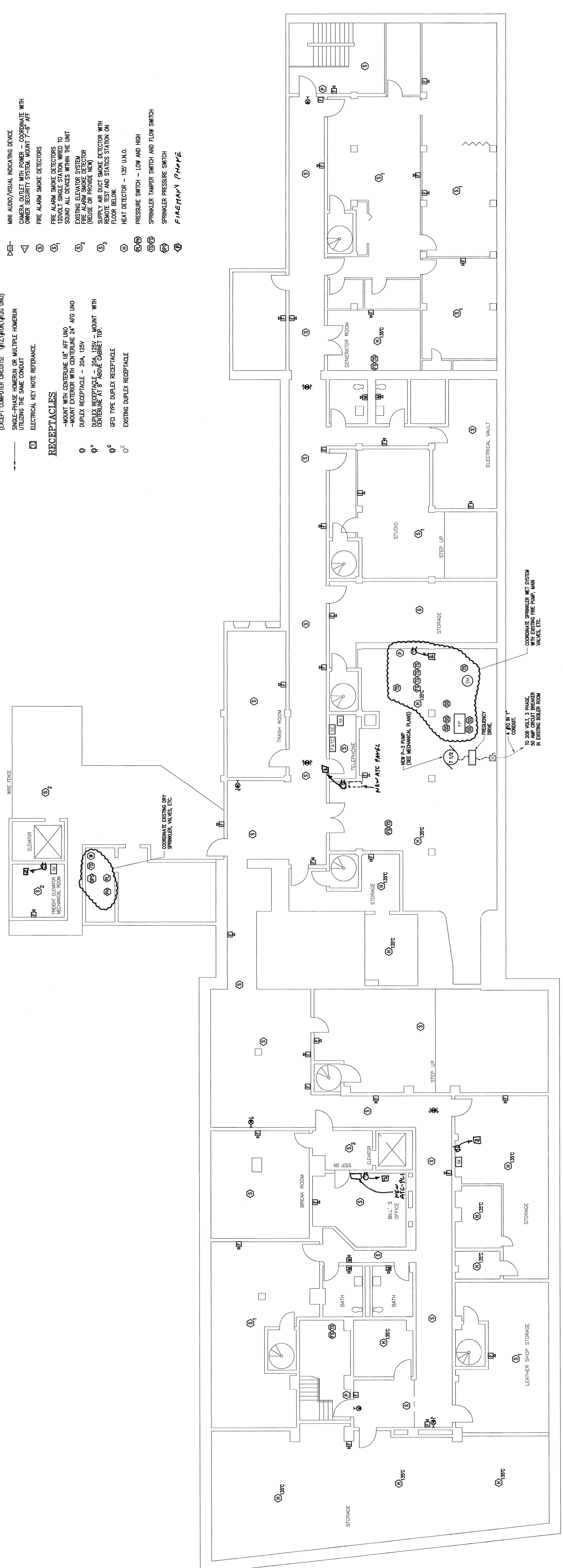
- FACE FIRE ALARM CONTROL PANEL
- FACB FIRE ALARM TERMINAL CABINET
- EVALC VOICE EVACUATION CONTROL AND FREEMANS COMMUNICATION PANEL
- ANV FIRE ALARM ANNUNCIATOR
- SE SIGNAL EXPANDER
- ISOLATOR MODULE
- FP FIRE PUMP
- SPRINKLER MAIN
- MANUAL PULL STATION
- AI AUDIO/VISUAL INDICATING DEVICE
- VI VISUAL INDICATING DEVICE
- MAI MINI AUDIO/VISUAL INDICATING DEVICE
- CA CAMERA OUTLET WITH POWER - COORDINATE WITH OWNER SECURITY SYSTEM, MOUNT 7'-6" AFF
- SA FIRE ALARM SMOKE DETECTORS
- SA1 FIRE ALARM SMOKE DETECTORS TO ZONE/STATION WIRE TO SIGNAL DEVICES WITHIN THE UNIT
- SA2 FIRE ALARM SMOKE DETECTOR (REUSE OR PROVIDE NEW)
- SA3 SUPPLY AIR DUCT SMOKE DETECTOR WITH REMOTE TEST AND STATUS STATION ON FLOOR BELOW
- SA4 HEAT DETECTOR - 135° U.N.O.
- SA5 PRESSURE SWITCH - LOW AND HIGH
- SA6 SPRINKLER TAMPER SWITCH AND FLOW SWITCH
- SA7 SPRINKLER PRESSURE SWITCH
- SA8 FIREMAN'S PHONE

**POWER DISTRIBUTION**

- PANELBOARD—SURFACE MOUNTED
- PANELBOARD—FLUSH MOUNTED
- HEAVY DUTY FUSED DISCONNECT SWITCH
- HEAVY DUTY NON-FUSED DISCONNECT SWITCH
- ⊕ MOTOR-NUMBER INDICATES HORSEPOWER
- JUNCTION BOX—WALL MOUNTED
- CONDUIT TURNING DOWN
- WIRING UNDERGROUND OR UNDERSLAB
- HOMERUN—20/12/10 UNLESS NOTED OTHERWISE (EXCEPT COMPUTER CIRCUITS: #12, #10, #12 UNO)
- SINGLE-PHASE HOMERUN OR MULTIPLE HOMERUN UTILIZING THE SAME CONDUIT
- ELECTRICAL KEY NOTE REFERENCE.

**RECEPTACLES**

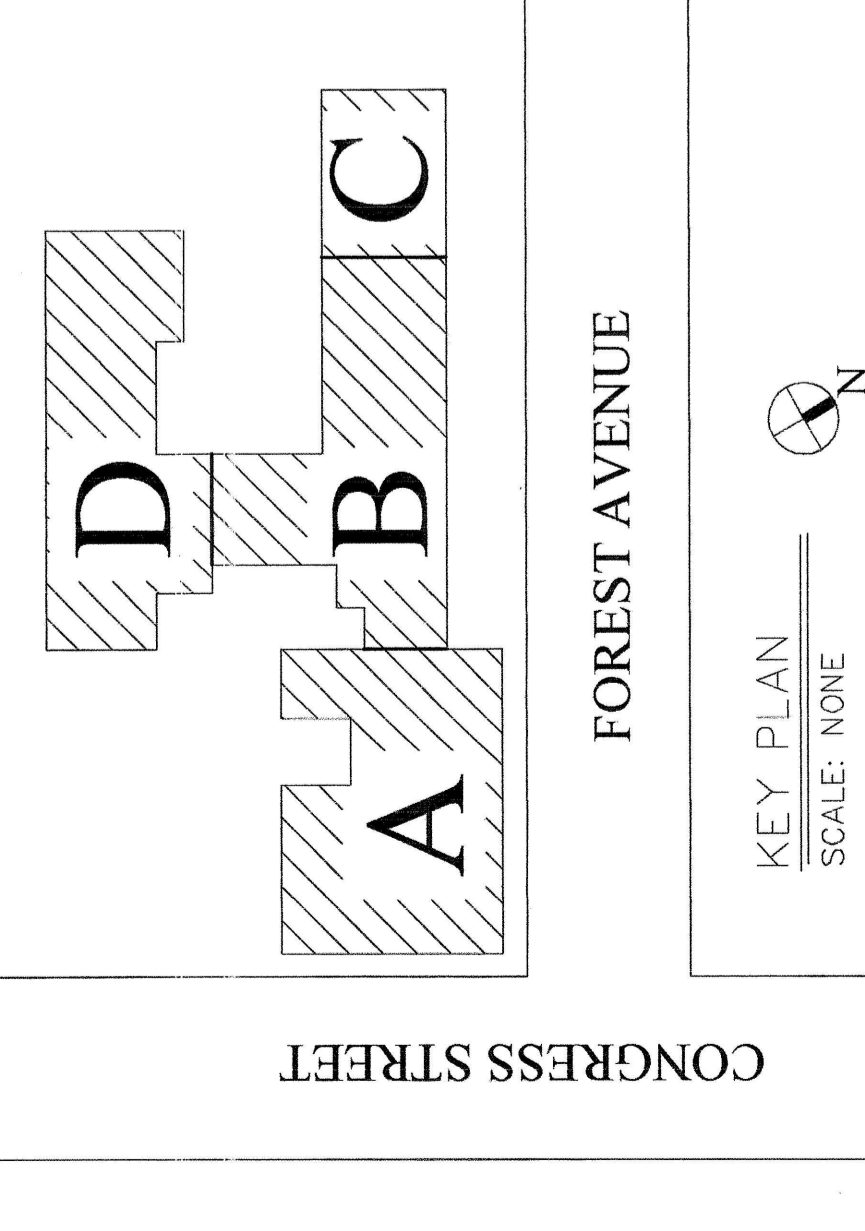
- MOUNT WITH CENTERLINE 18" AFF UNO
- MOUNT EXTERIOR WITH CENTERLINE 24" AFF UNO
- DUPLEX RECEPTACLE - 20A, 125V
- DUPLEX RECEPTACLE - 20A, 125V - MOUNT WITH CENTERLINE AT 8" ABOVE CABINET TOP.
- GFCI TYPE DUPLEX RECEPTACLE
- EXISTING DUPLEX RECEPTACLE



BASEMENT  
SCALE: 1/8" = 1'-0"

**LIGHTING FIXTURE & LAMPING SCHEDULE**

TYPE	DESCRIPTION	VOLTAGE	VA	MOUNTING & INSTRUCTIONS	LAMPING
⊗	LIGHT ALARMS 20LED-A-R-A, LED, BE CAST AL, SELF-POWERED ENT SIGNS	120	-	WALL SURFACE OR CEILING MOUNT 7'-6" AFF OR AS INDICATED ON DRAWINGS	INCLUDED



**BID SET**  
**FEBRUARY 4, 2005**

 <b>HARBOR MANAGEMENT CO.</b> 23 CENTRAL AVENUE SUITE 710 LYNN, MA 01901	<b>ARCHETYPE, P.A.</b> <b>ARCHITECTS</b> 48 Union Wharf Portland, Maine 04101 (207) 772-6022 Fax (207) 772-4056	<b>Project:</b> RENOVATION OF CONGRESS SQUARE PLAZA 10 CONGRESS STREET PORTLAND, MAINE 04101	<b>BASEMENT FLOOR PLAN</b> ELECTRICAL MODIFICATIONS AND NEW FIRE ALARM SYSTEM
<b>Owner:</b>		<b>Architect:</b>	
<b>Date:</b> 2-4-05		<b>Scale:</b> 1/8" = 1'-0"	
<b>Drawn:</b> CLC		<b>Checked:</b> AWM	

**EB**