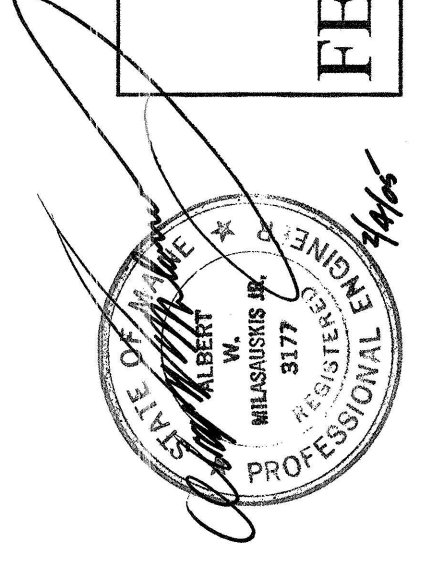


BID SET
FEBRUARY 4, 2005



M3

THIRD FLOOR APARTMENTS
MECHANICAL

Drawing:

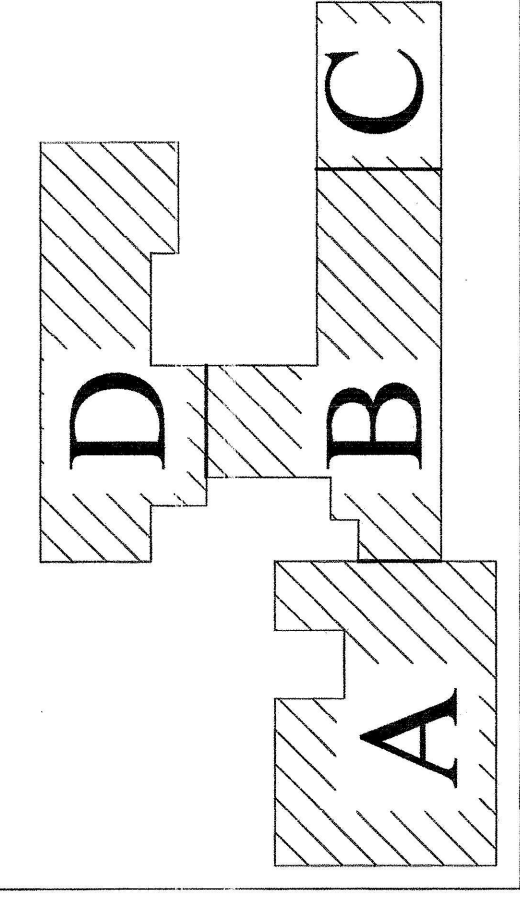
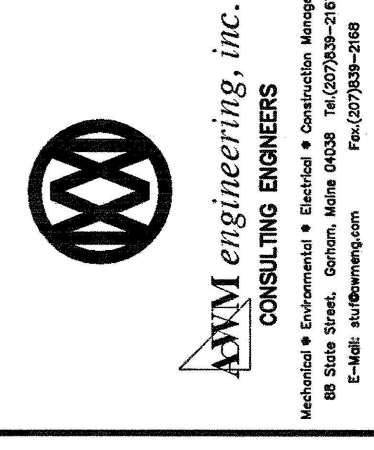
Date: 2-4-05
Scale: 1/8" = 1'-0"

Drawn: CLC
Checked: AWM

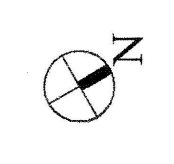
Project:
RENOVATION OF
CONGRESS SQUARE PLAZA
10 CONGRESS STREET
PORTLAND, MAINE 04101

Architect:
ARCHETYPE, P.A.
ARCHITECTS
48 Union Wharf Portland, Maine 04101
(207) 772-6022 Fax (207) 772-4056

Owner:
HARBOR MANAGEMENT CO.
23 CENTRAL AVENUE
SUITE 710
LYNN, MA 01901

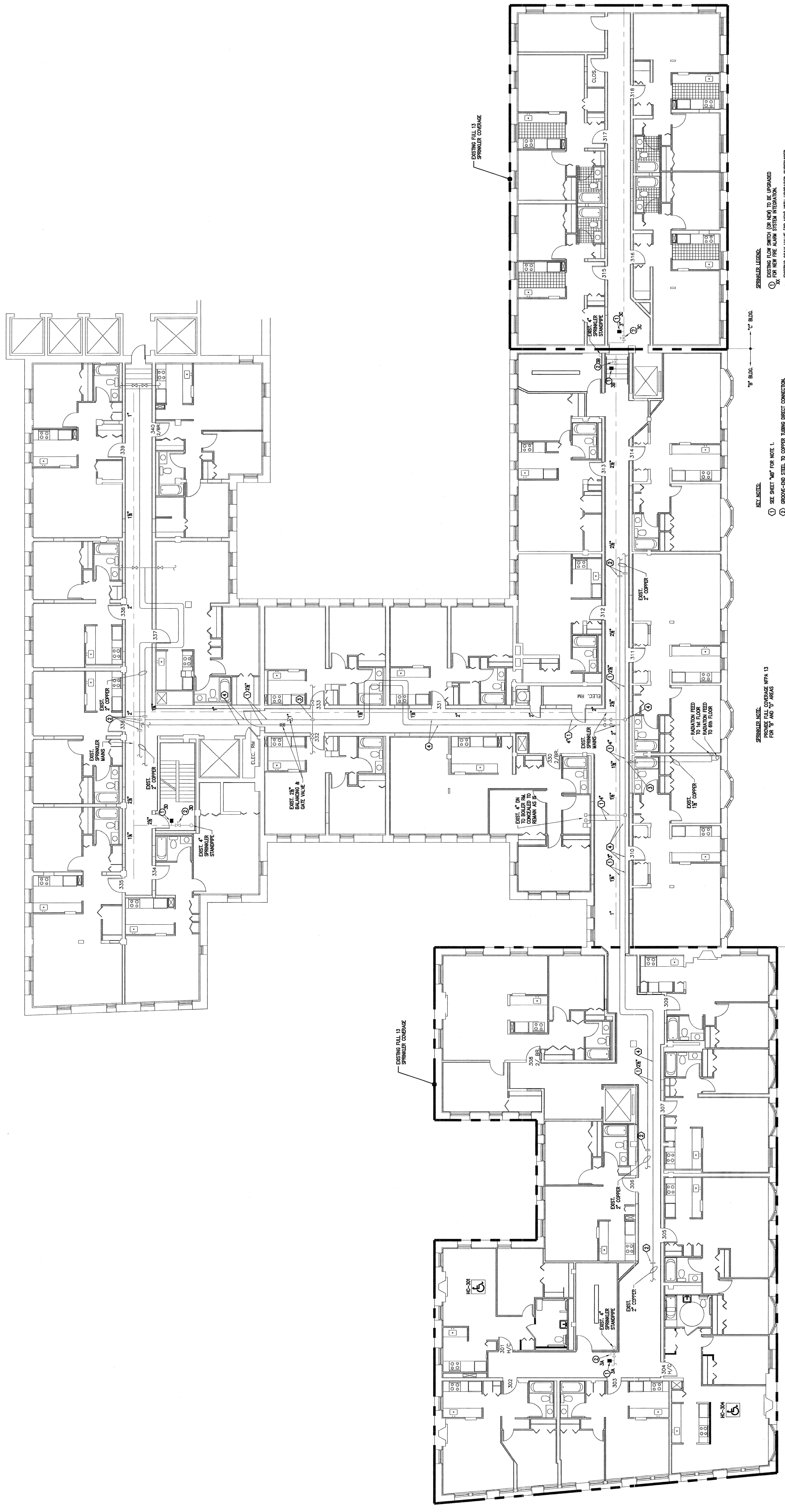


FOREST AVENUE



KEY PLAN
SCALE: NONE

CONGRESS STREET



SPRINKLER LEGEND:
 (1) EXISTING FLOW SWITCH (OR NEW) TO BE UPGRADED FOR NEW FIRE ALARM SYSTEM INTERACTION.
 (2) EXISTING GRAY VALVE (OR NEW) WITH UPGRADED SUPERVISED SWITCH FOR NEW FIRE ALARM SYSTEM.
 (3) (FIRST LETTER) EQUALS WHICH FLOOR; FOR INSTANCE B = BASEMENT (SECOND LETTER) EQUALS WHICH BLDG.; FOR INSTANCE C = "C" BLDG.

KEY NOTES:
 (1) SEE SHEET "ME" FOR NOTE 1.
 (2) ABOVE-END STEEL TO COPPER TUBING DIRECT CONNECTION.
 (3) TYPICAL BRANCH FEED WITH WELDED OUTLET FITTING WITH FEMALE THREADED HEAD TO THREADED COPPER. TYPICAL BRANCH PIPING NOT INSULATED TO REMAIN NOT INSULATED.
 (4) TYPICAL ALL FITTINGS ARE NOT TO BE INSULATED. EXISTING MAIN HIRSH PIPING INSULATED. NEW INSULATION ON MAIN PIPING PER DETAILS.

SPRINKLER NOTE:
 PROVIDE FULL COVERAGE WPA 13 FOR "B" AND "C" BLDGS.
 THIRD FLOOR
 SCALE: 1/8" = 1'-0"

"A" BLDG. ← "B" BLDG.

"C" BLDG. ← "D" BLDG.