

BID SET
FEBRUARY 4, 2005



M6

SIXTH FLOOR APARTMENTS
MECHANICAL

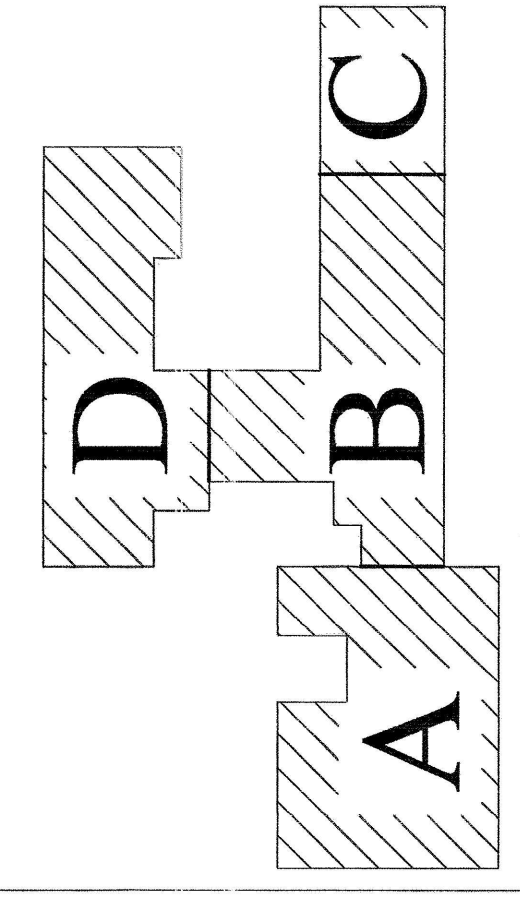
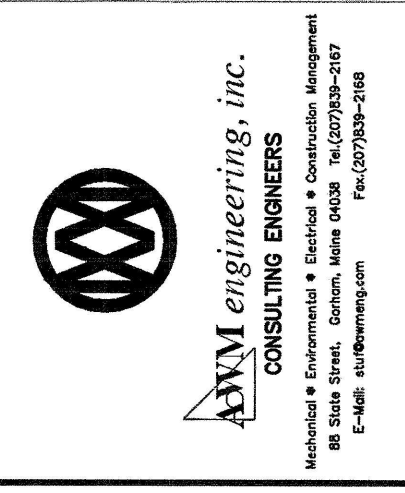
Drawing:

Date:	2-4-05	Scale:	1/8" = 1'-0"
Drawn:	CLC	Checked:	AWM

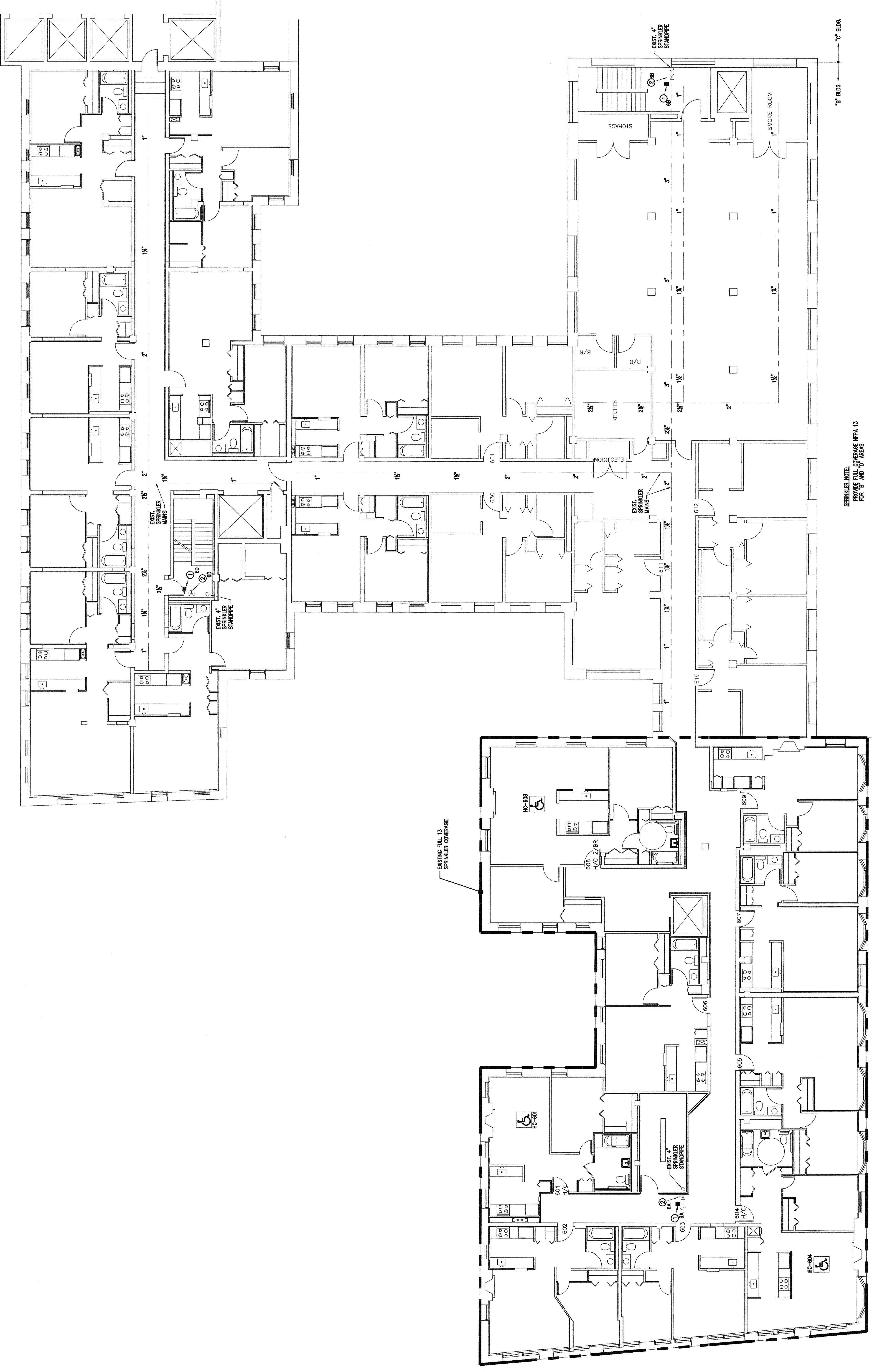
Project:
RENOVATION OF
CONGRESS SQUARE PLAZA
10 CONGRESS STREET
PORTLAND, MAINE 04101

Architect:
ARCHETYPE, P.A.
ARCHITECTS
48 Union Wharf Portland, Maine 04101
(207) 772-6022 Fax (207) 772-4056

Owner:
HARBOR MANAGEMENT CO.
23 CENTRAL AVENUE
SUITE 710
LYNN, MA 01901



KEY PLAN
SCALE: NONE



- SPRINKLER LEGEND:
- EXISTING FLOW SWITCH (OR NEW) TO BE UPGRADED
 - ⊗ FOR NEW FIRE ALARM SYSTEM INTEGRATION
 - ⊗ EXISTING CSBY VALVE (OR NEW) WITH UPGRADED SUPERSEED
 - ⊗ SWITCH FOR NEW FIRE ALARM SYSTEM
 - (FIRST LETTER) EQUALS WHICH FLOOR; FOR INSTANCE B = BASEMENT
 - (SECOND LETTER) EQUALS WHICH BLDG.; FOR INSTANCE C = "C" BLDG.

SPRINKLER NOTE:
PROVIDE FULL COVERAGE NFPA 13
FOR "B" AND "C" BLDGS.
SIXTH FLOOR
SCALE: 1/8" = 1'-0"