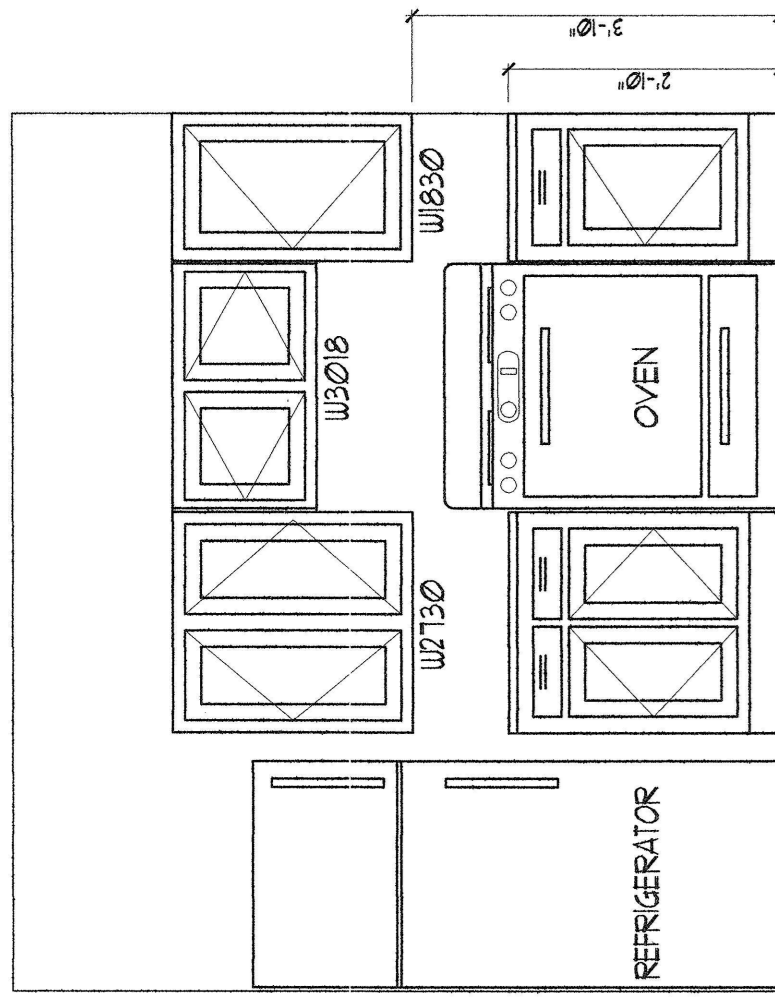
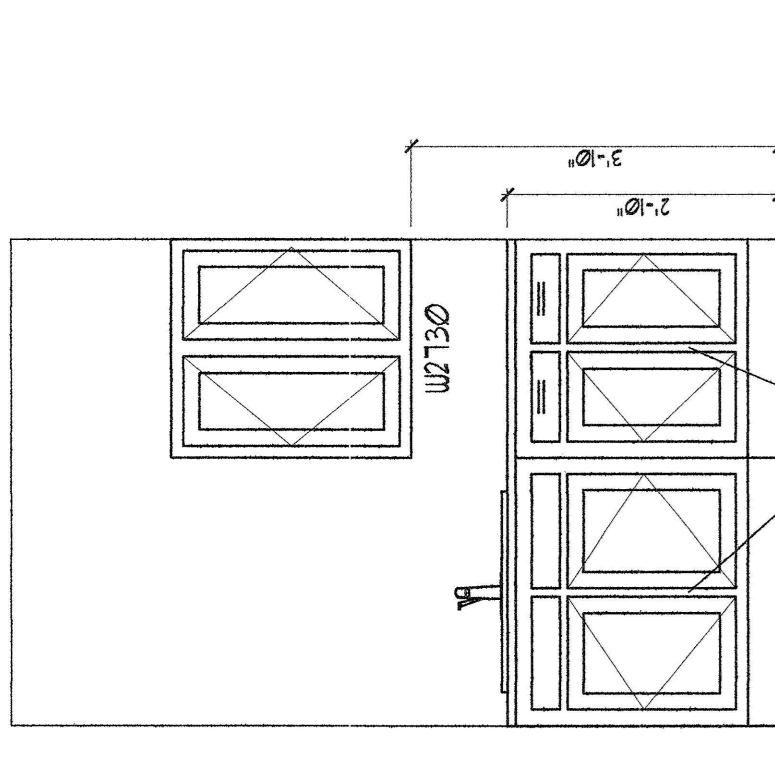


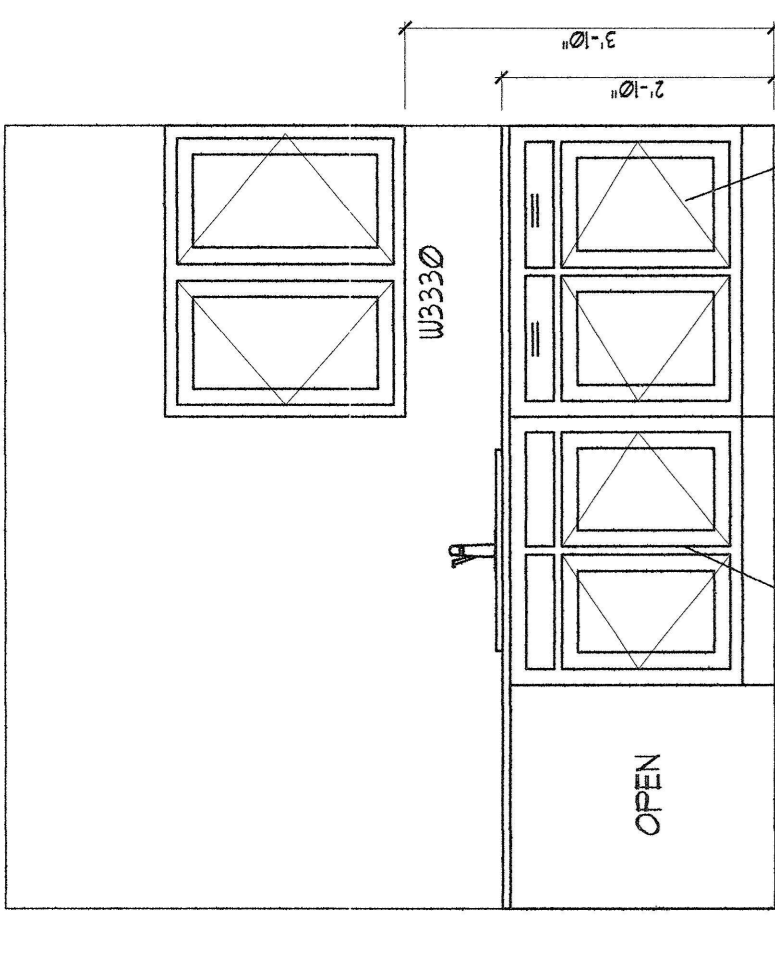
UNIT 101, 201, 301, 401, 501, 601



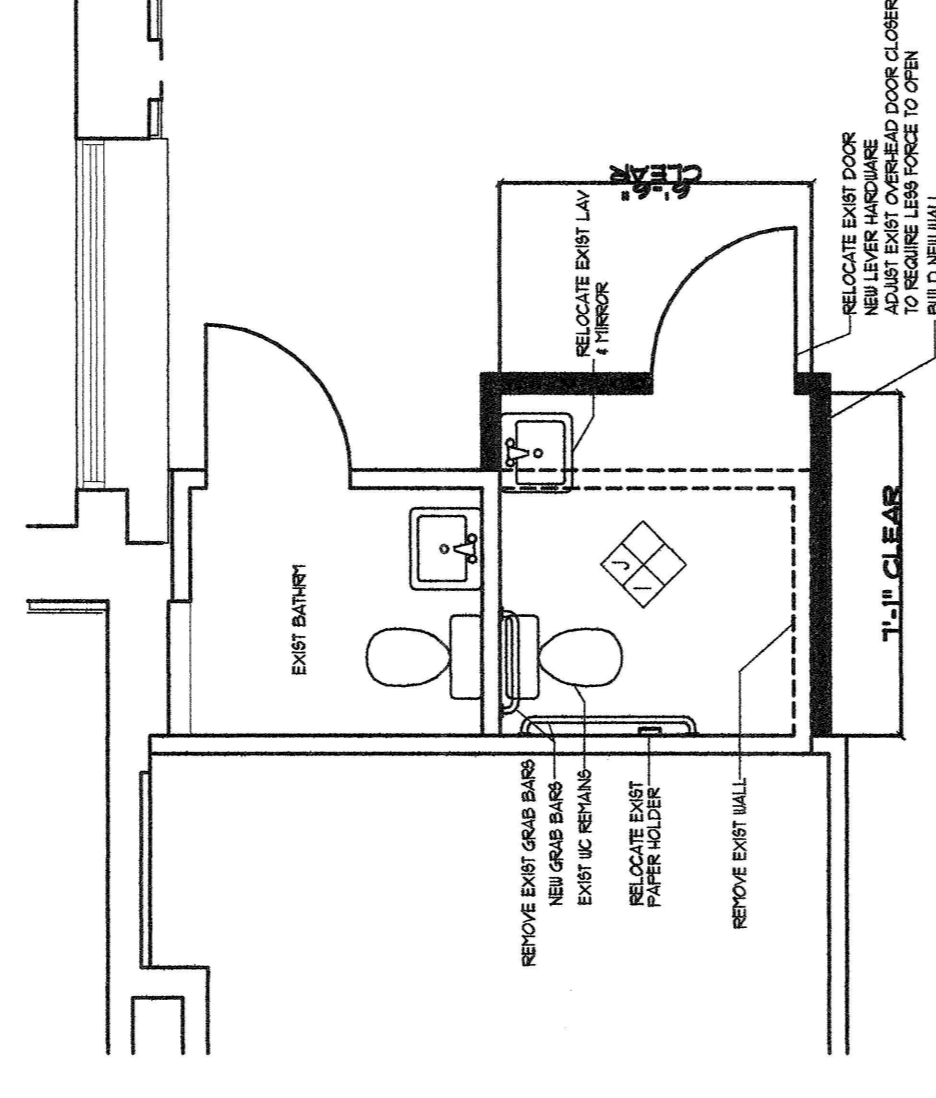
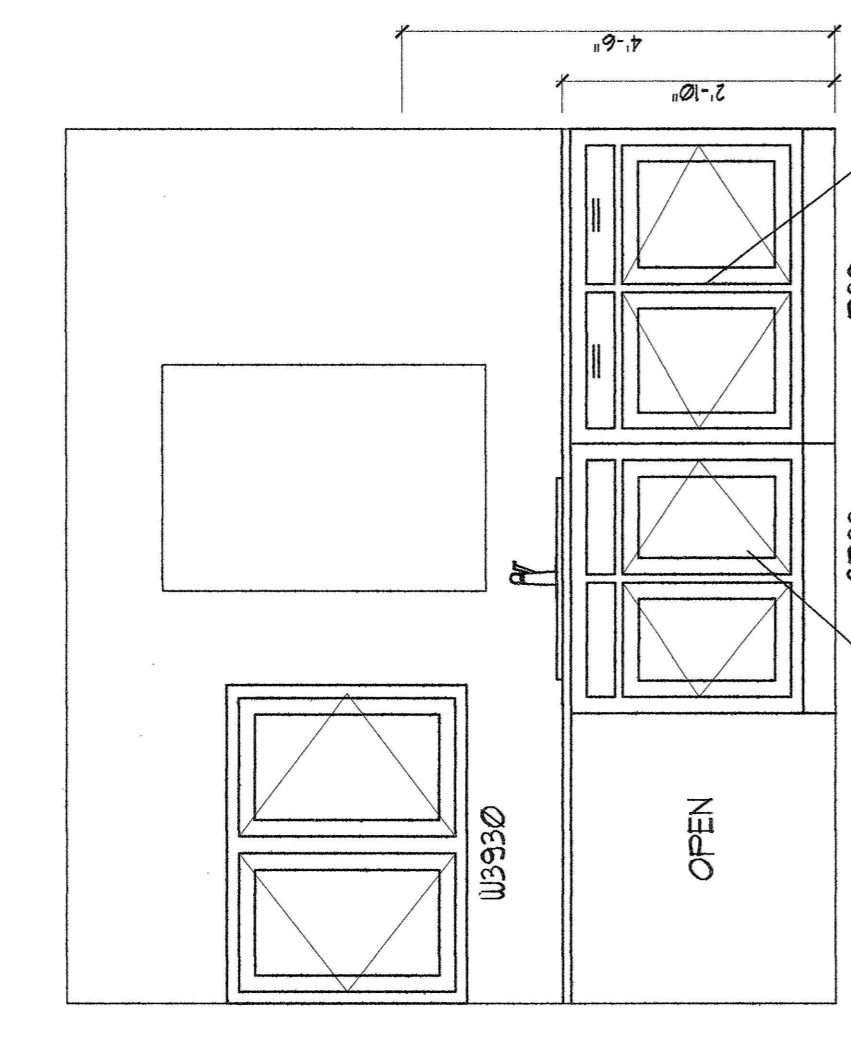
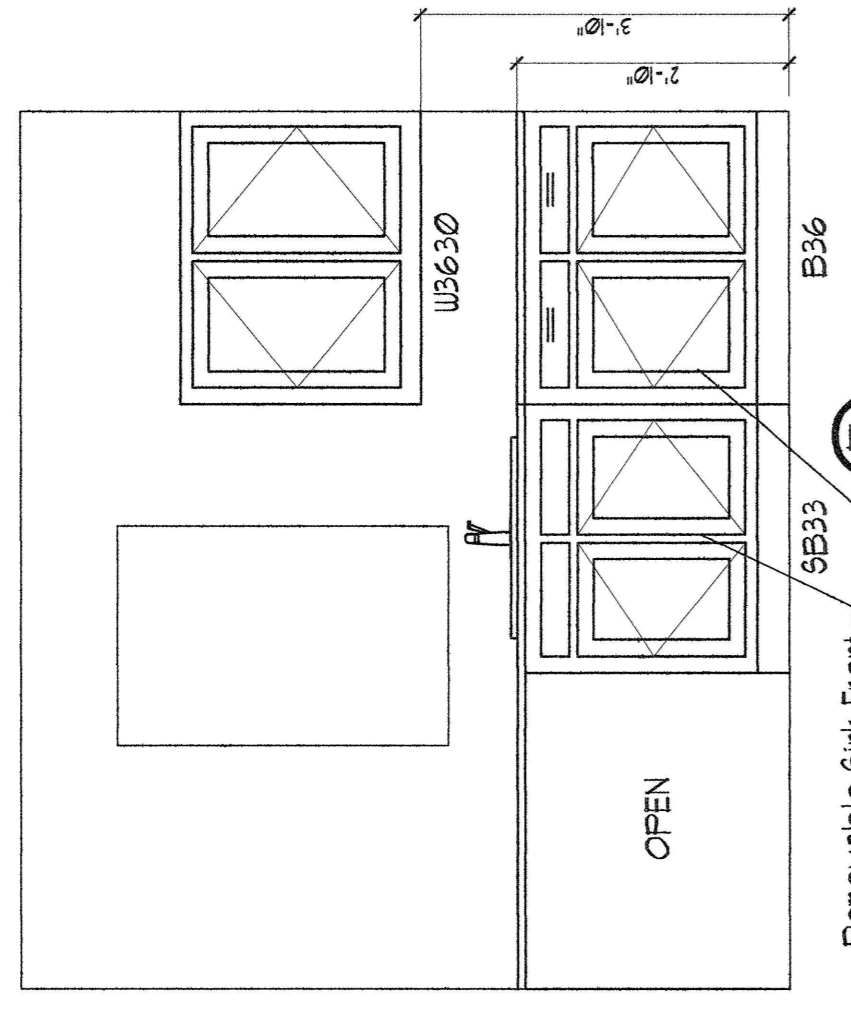
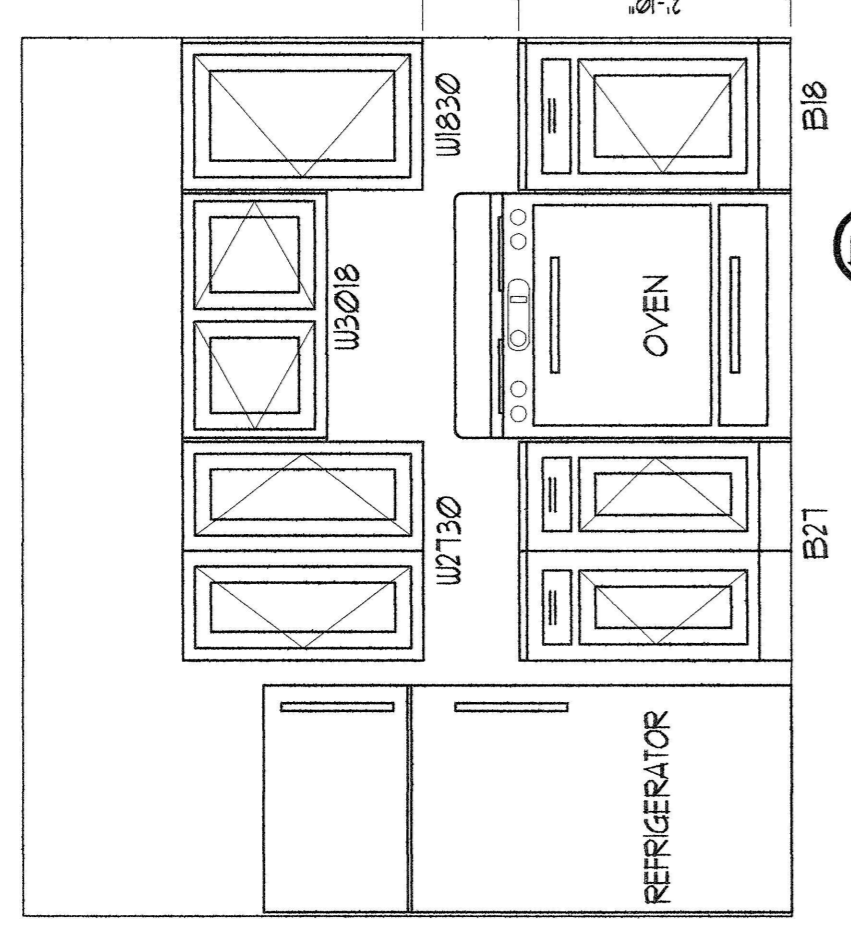
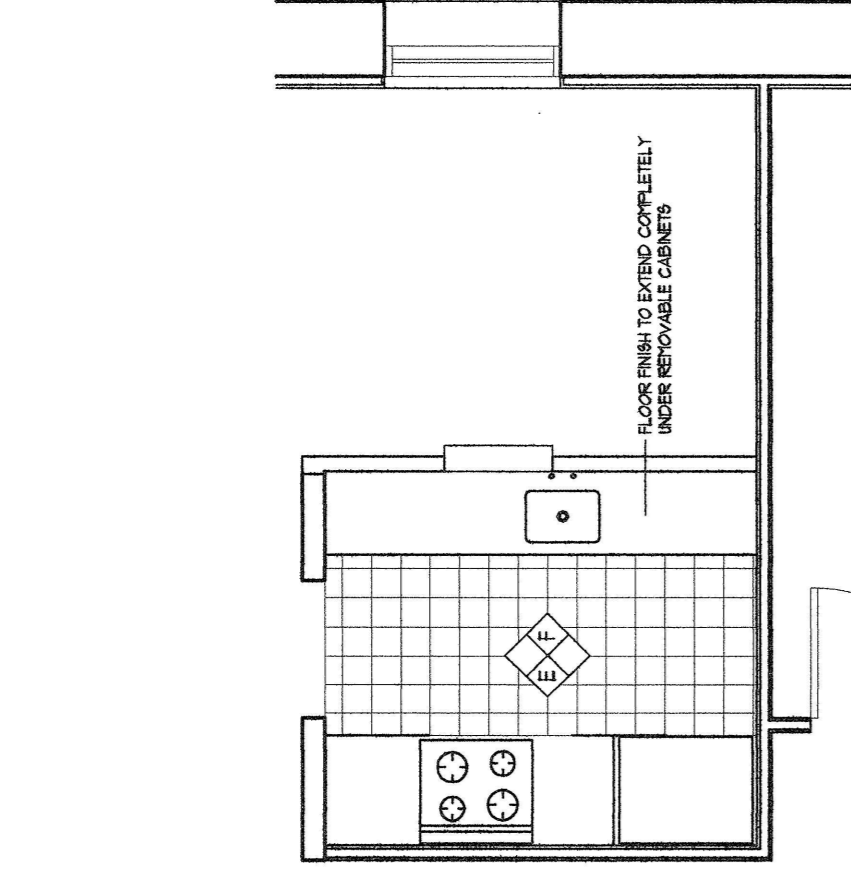
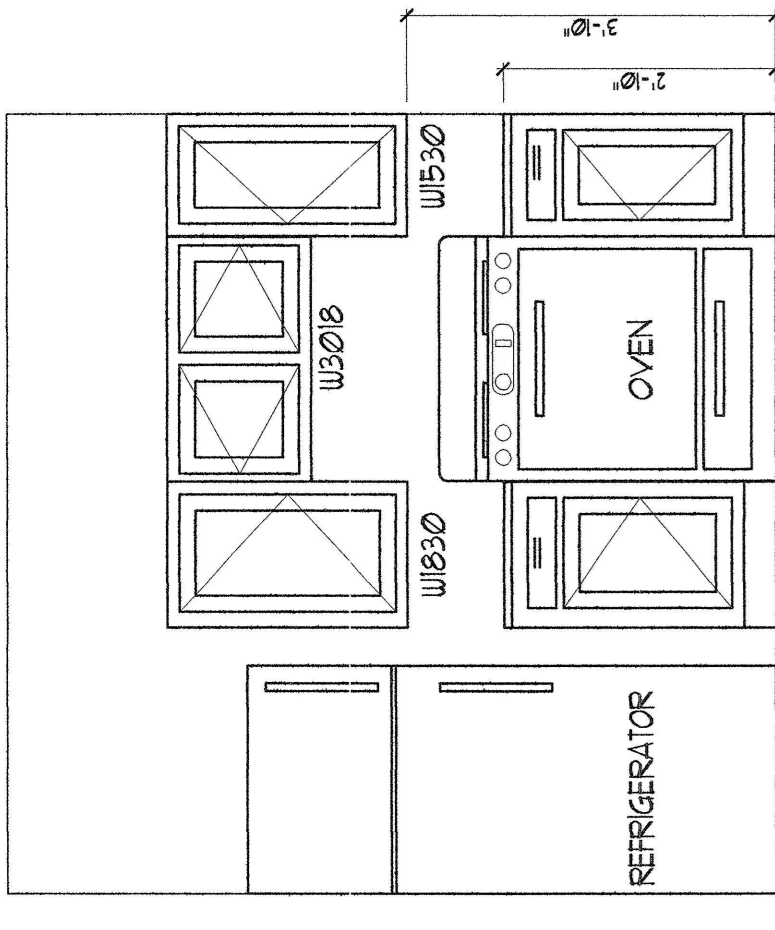
UNIT 104, 204, 304, 404, 504, 604



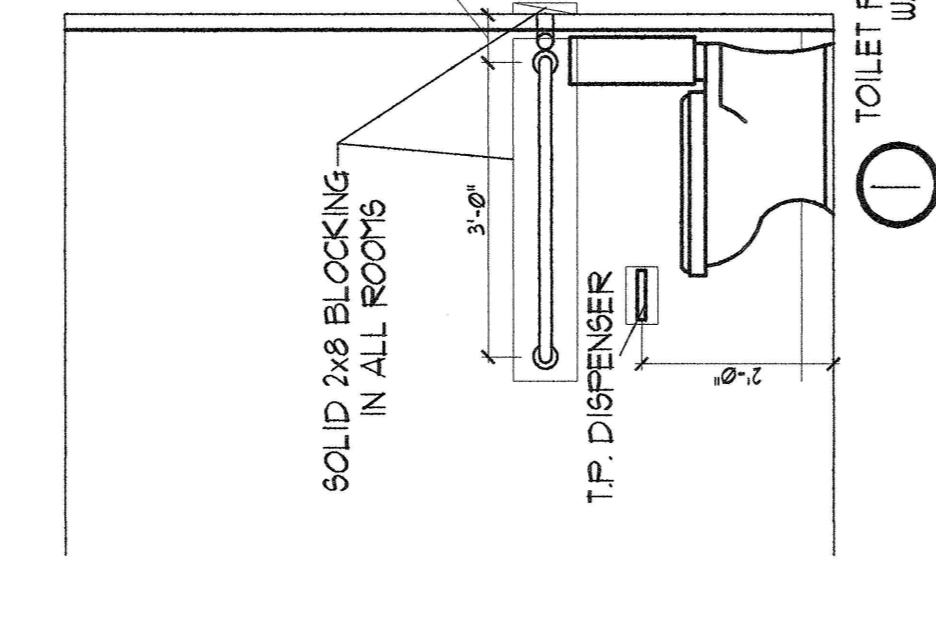
UNIT 410, 510



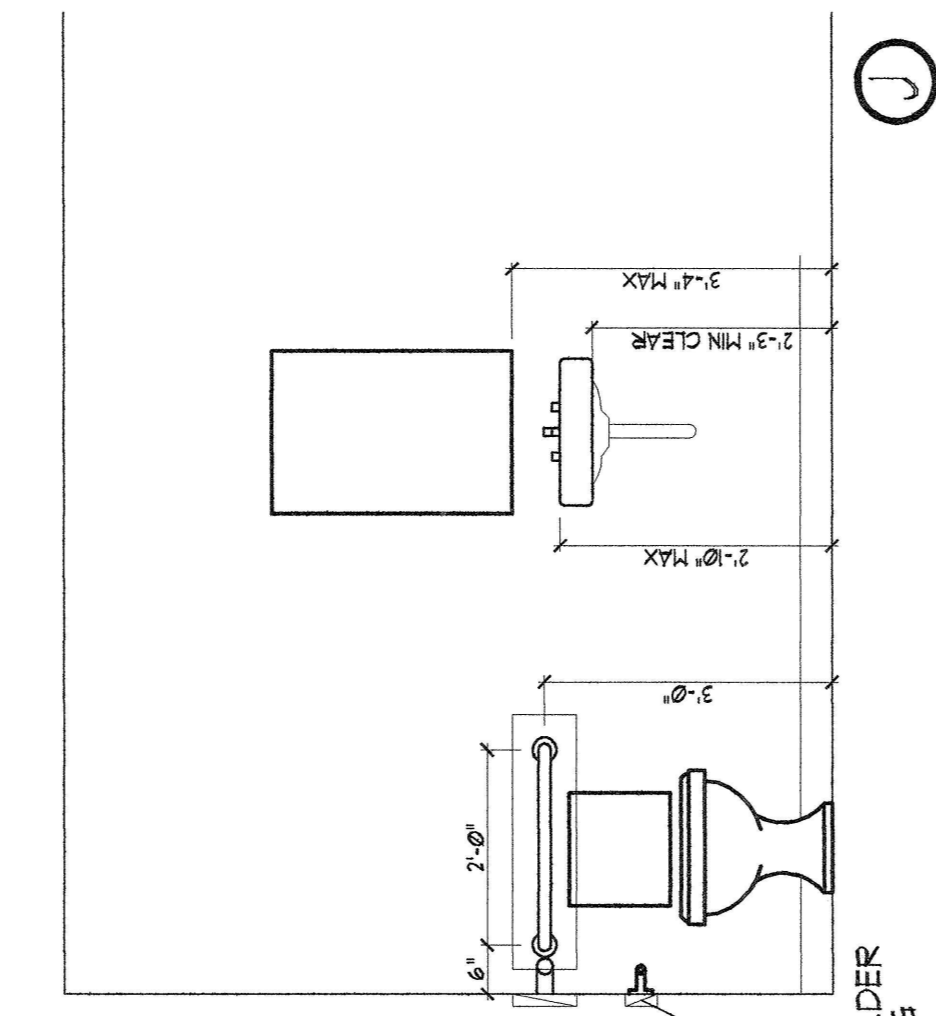
UNIT 508, 608



PUBLIC BATHROOM IN 6TH FLOOR COMMON ROOM



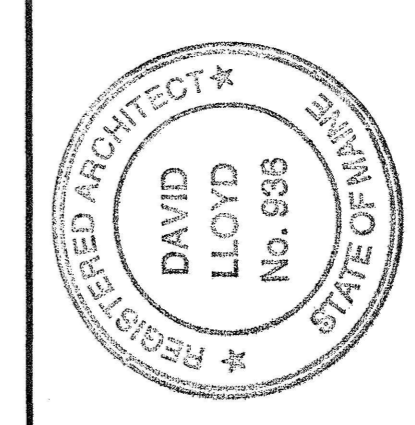
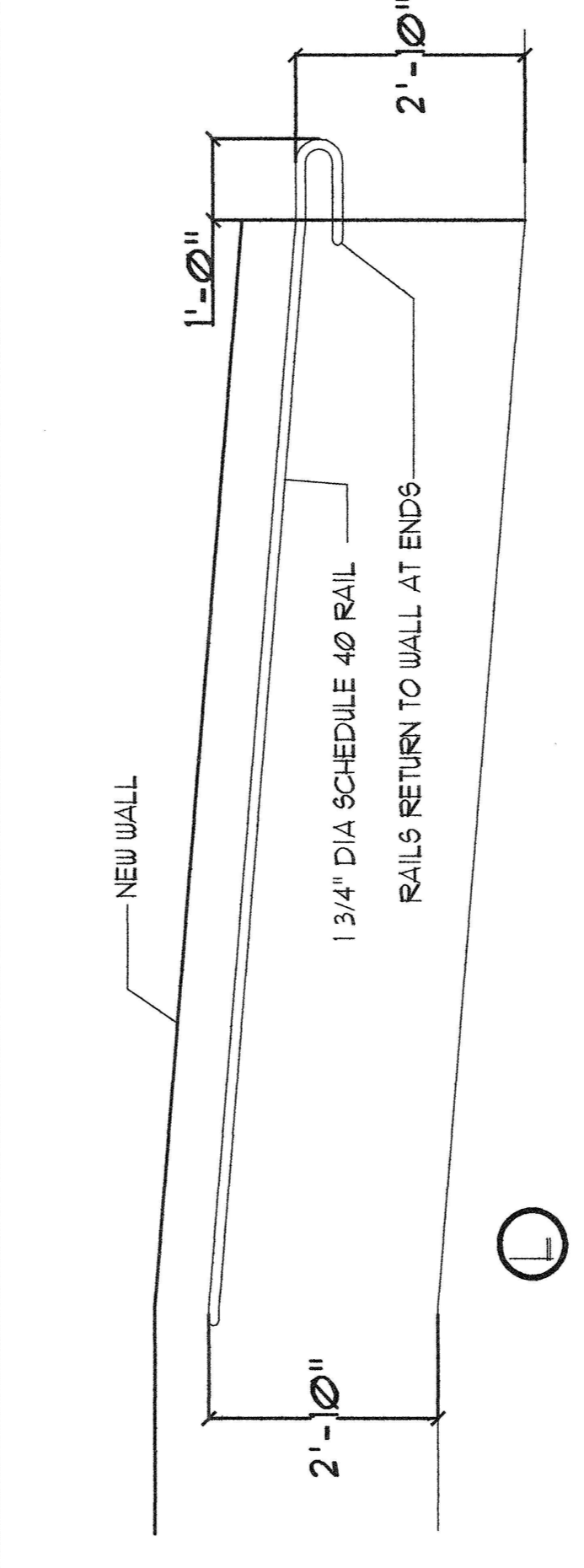
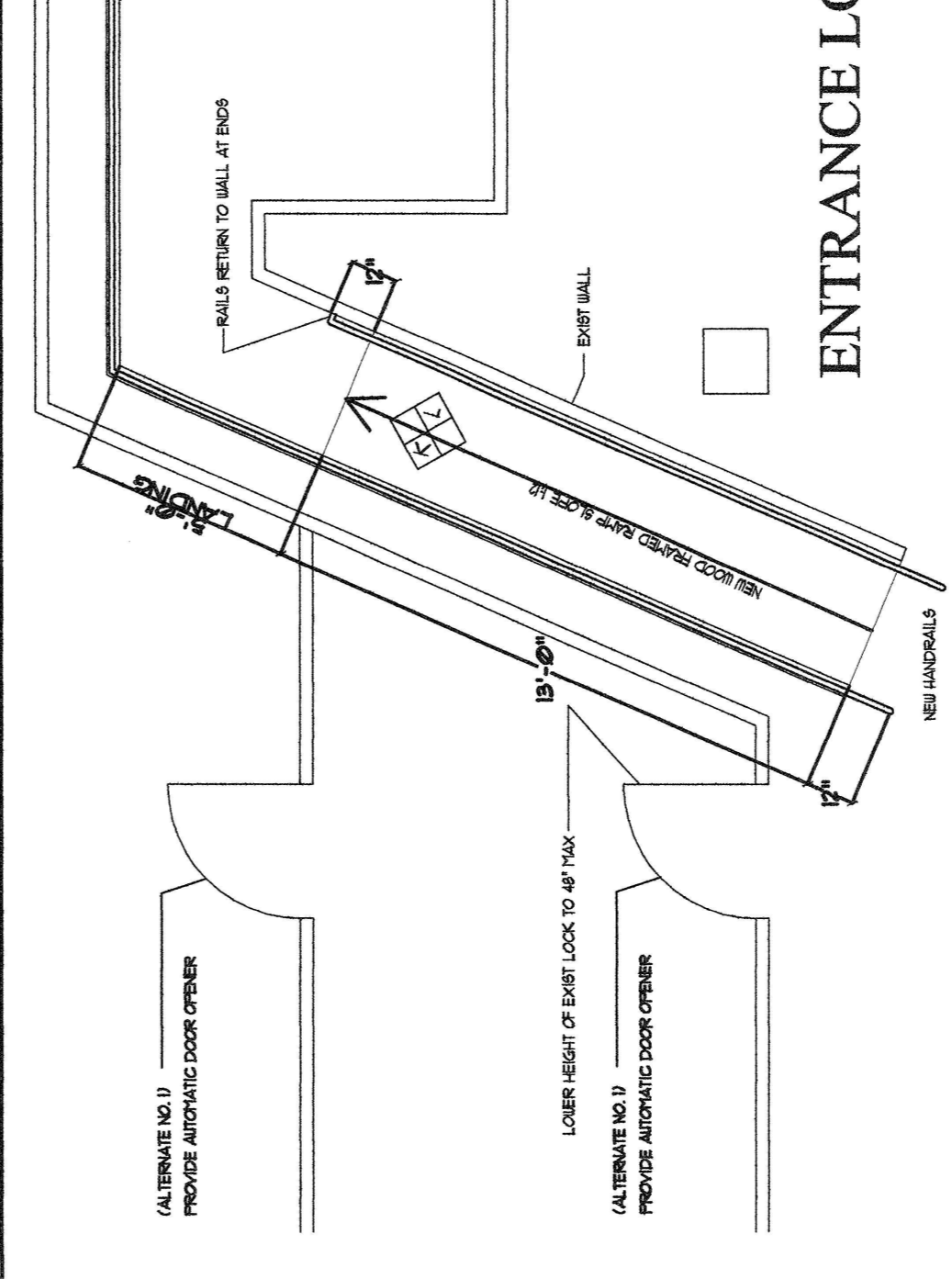
ENTRANCE LOBBY NO. 2



6TH FLOOR COMMON ROOM

LIST OF ADDITIONAL VIOLATIONS

1. NOT USED
2. REMOVE DOORS TO TRASH CHUTE ROOMS AND BUILD IN 36" WIDE DOORS WITH LEVER HANDLES
3. REMOVE KNOB HANDLE FROM TRASH CHUTE AND INSTALL LEVER OR PULL HANDLE
4. LOWER HEIGHT OF EXIST COUNTER IN 6th FLOOR PUBLIC KITCHEN TO 34" AFF AND REPLACE SINK FAUCETS HANDLES WITH LEVER HANDLES
5. NOT USED
6. 3 UNITS ARE TO HAVE SMOKE DETECTORS AND FIRE ALARMS REPLACED WITH AUDIOVISUAL DETECTORS AND ALARMS



Owner:
PLAZA ASSOCIATES AT
CONGRESS SQUARE L.P.
PACS, LLC its GENERAL PARTNER
491 HUMPHREY STREET
SWAMPSCOTT, MA 01907

Architect:
ARCHETYPE, P.A.
ARCHITECTS
48 Union Wharf Portland, Maine 04101
(207) 772-6022 Fax (207) 772-4056

Project:
RENOVATION OF
CONGRESS SQUARE PLAZA
10 CONGRESS STREET
PORTLAND, MAINE 04101

Date:
FEB 04 2005

Scale:
1/4" = 1'-0"
1/2" = 1'-0"

Drawing:

**ACCESSIBLE KITCHENS
AND PUBLIC SPACES**

A.21