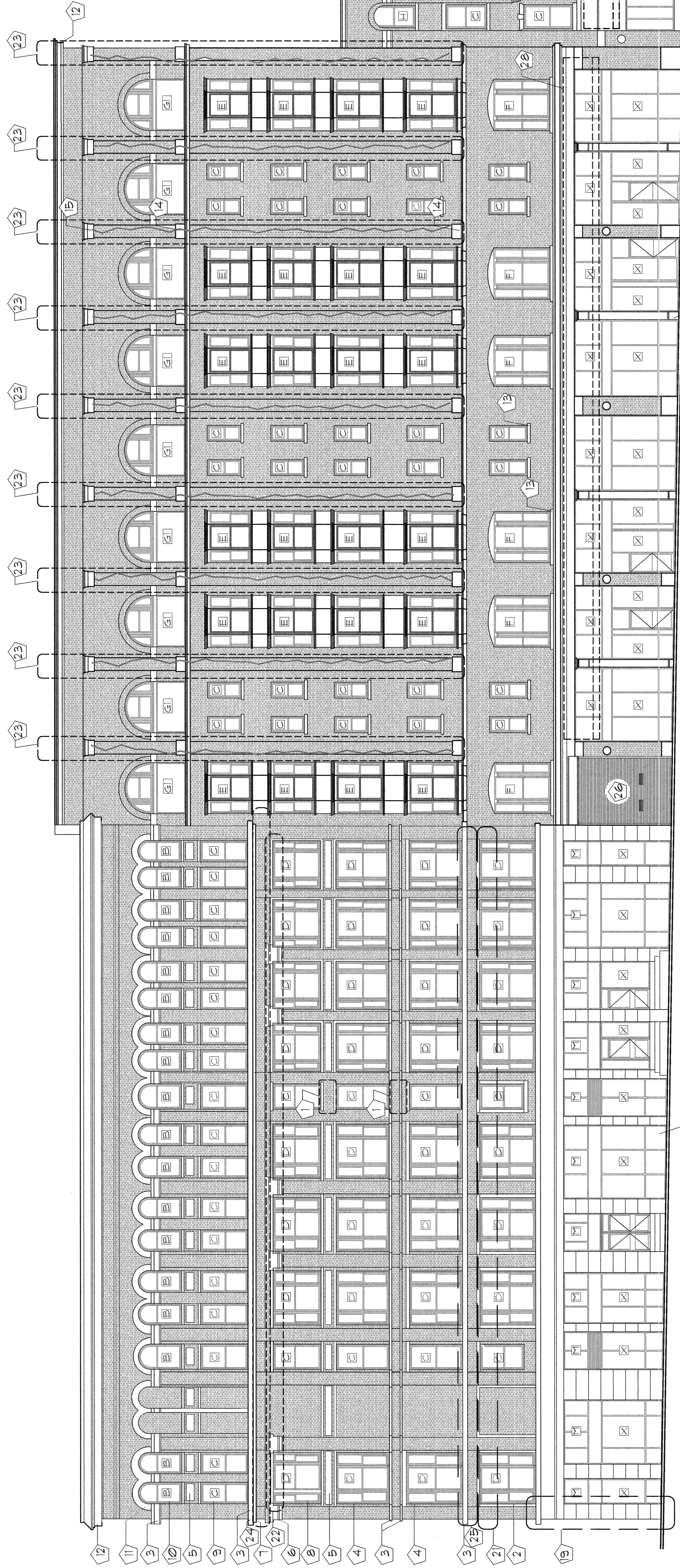


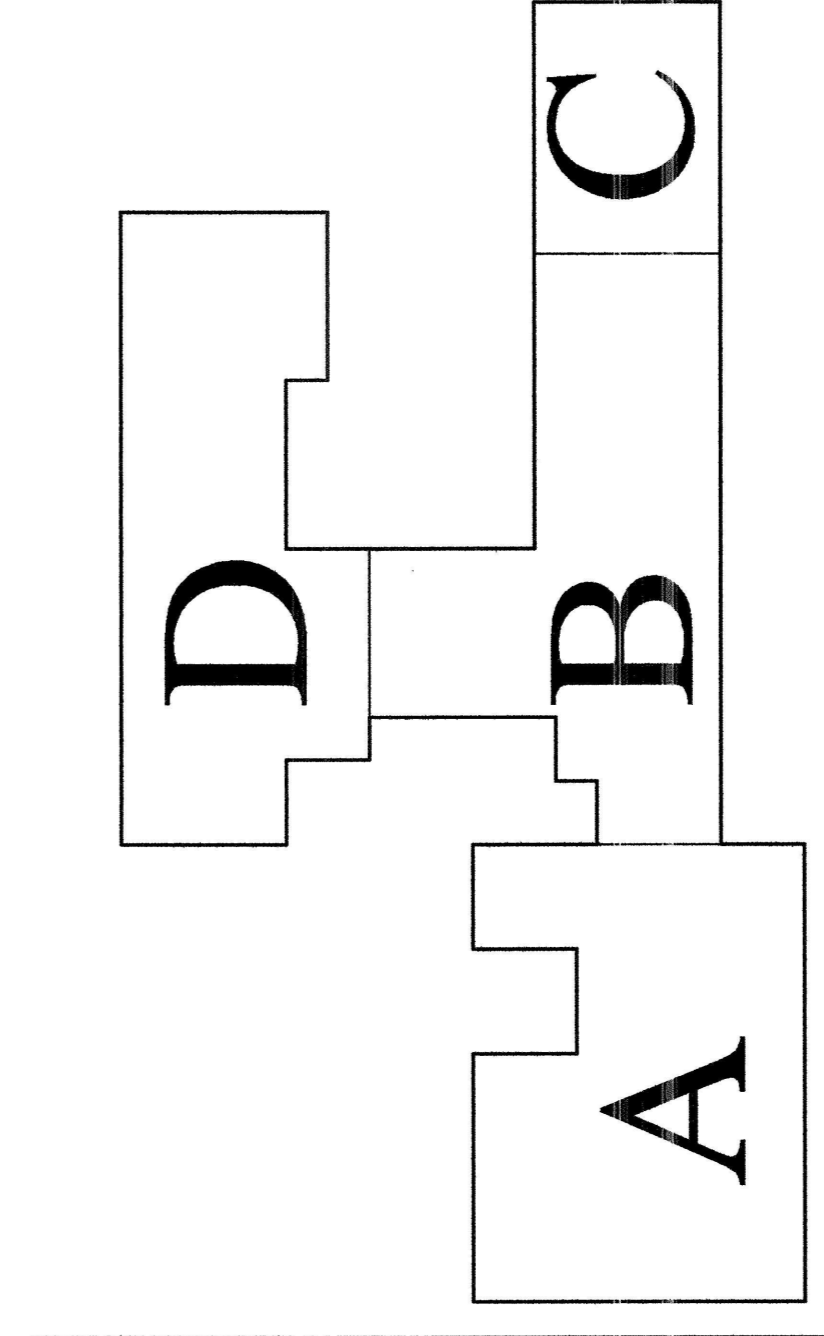
ELEVATION OF EXISTING 5th FLOOR LINTEL (TYP.)  
SCALE: 1/4" = 1'-0"

- 1 WINDOW SYSTEM.
- 2 BRICK JAMB.
- 3 BRICK FILASTER.
- 4 NOT USED.
- 5 NOT USED.
- 6 CRACK - LOCATIONS VARY.



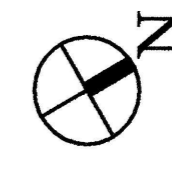
1 FOREST AVENUE ELEVATION  
SCALE: 1/8" = 1'-0"

LEGEND:



FOREST AVENUE

KEY PLAN  
SCALE: NONE



BUILDING "B"

BUILDING "A"

BUILDING "C"

JAGGED LINE INDICATES AREAS OF STEEL JACKING.

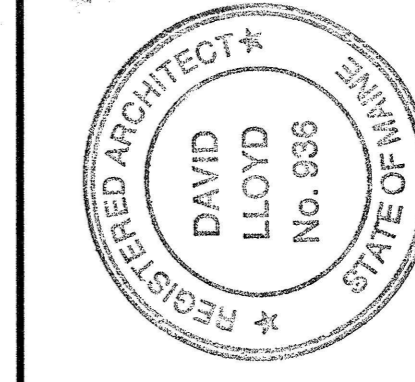
KEYED NOTES:

- 1 DISASSEMBLE AND RELAY BRICK WALL THIS AREA.
- 2 1st FLOOR WINDOWS - BROWNSTONE JAMBS & HEADERS.
- 3 BROWNSTONE BAND COURSE.
- 4 2nd & 3rd FLOOR WINDOWS - BROWNSTONE HEADERS & BRICK JAMBS.
- 5 BROWNSTONE PANEL (TYP.).

- 6 BROWNSTONE CAPITAL (TYP.).
- 7 BROWNSTONE EGG & DART BAND COURSE - REMOVE AND REPLACE WITH CAST STONE IN TOTAL.
- 8 4th FLOOR WINDOWS - BROWNSTONE HEADER & SILL, BRICK JAMBS.
- 9 5th FLOOR WINDOWS - BROWNSTONE HEAD, BRICK JAMBS.
- 10 6th FLOOR WINDOWS - BROWNSTONE HEAD & SILL, BRICK JAMBS.
- 11 BROWNSTONE SEGMENTAL ARCH HOOD - SEE DRAWING 3/A2. (TYP.).
- 12 METAL COVERED CORNICE - SCRAPE, PRIME & PAINT.
- 13 BROWNSTONE SILL (TYP.).
- 14 BROWNSTONE BLOCK (TYP.).
- 15 BROWNSTONE CAPITAL (TYP.).
- 16 STONE SILL (TYP.).
- 17 STONE HEAD (TYP.).
- 18 STONE BLOCK (TYP.).
- 19 GROUND LEVEL GRANITE VENEER - REMOVE IN AREAS INDICATED - TREAT STEEL PER 2/A2. REINSTALL GRANITE VENEER.

- 20 2nd FLOOR BROWNSTONE LINTEL CONDITION - SEE DRAWING 1A/A2.
- 21 5th FLOOR BROWNSTONE LINTEL - SEE DRAWING 1B/A2.
- 22 AREAS OF STEEL JACKING - SEE DRAWINGS 2A-2/A2.
- 23 REMOVE AND REINSTALL BRICK WALL IN THIS LOCATION - SEE DRAWING 1A/A2.
- 24 REMOVE AND REINSTALL BRICK WALL IN THIS LOCATION - SEE DRAWING 1A/A2.
- 25 18' x 11' COILING OVERHEAD DOOR (CONTRACTOR TO FIELD VERIFY DIMENSIONS).

- 26 EXISTING STEEL FRAMED CANOPY BUILDING "C" - REMOVE. PAINT SPANDREL BEAMS & PATCH CONNECTION POINTS AFTER REMOVE.
- 27 EXISTING STEEL FRAMED CANOPY BUILDING "B" - TO REMAIN.



Owner:  
PLAZA ASSOCIATES AT  
CONGRESS SQUARE L.P.  
PACS LLC its GENERAL PARTNER  
491 HUMPHREY STREET  
SWAMPSCOTT, MA 01907

Architect:  
**ARCHETYPE, P.A.**  
**ARCHITECTS**  
48 Union Wharf Portland, Maine 04101  
(207) 772-6022 Fax (207) 772-4056

Project:  
RENOVATION OF  
CONGRESS SQUARE PLAZA  
10 CONGRESS SQUARE PLAZA  
PORTLAND, MAINE 04101

Date: FEB 04 2005

Scale: As Noted

Drawing:  
EXTERIOR ELEVATION  
FOREST AVE. ELEVATION

A.7