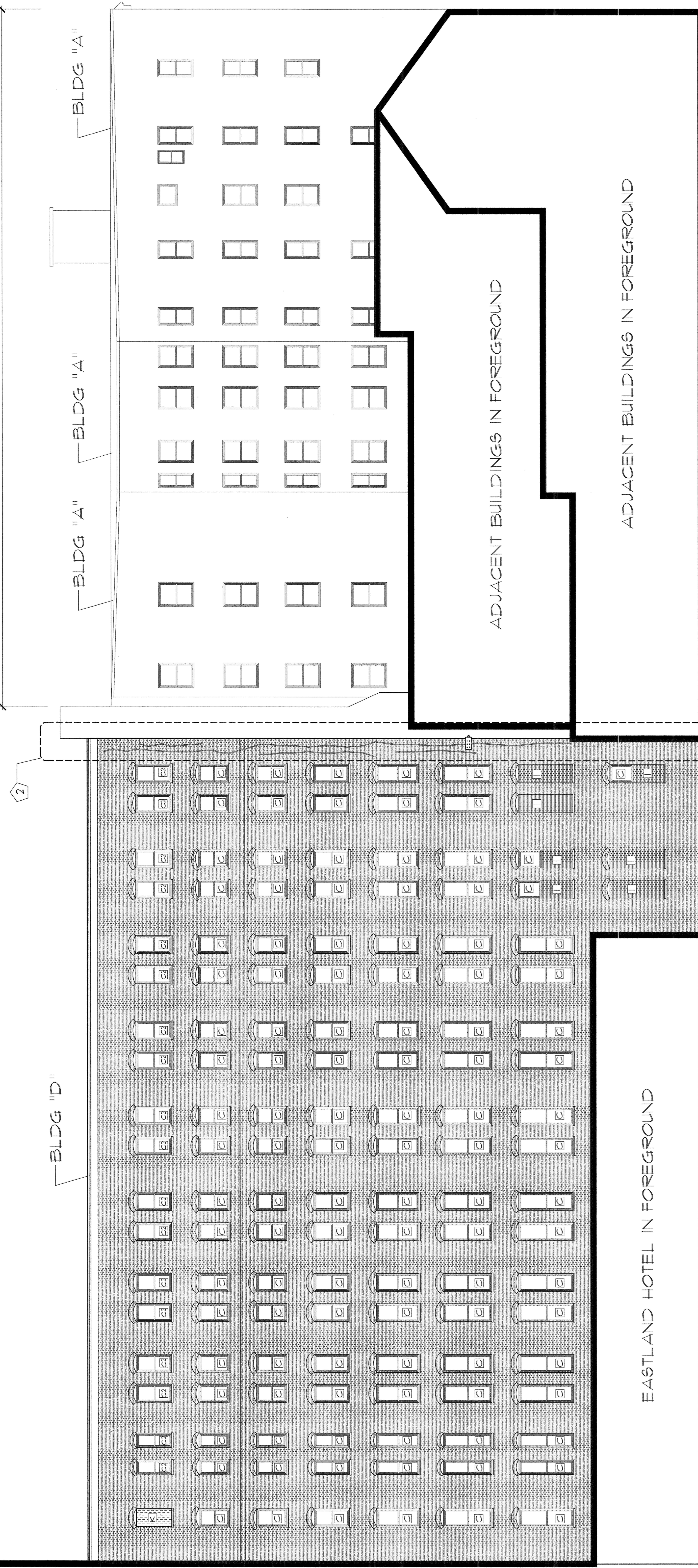
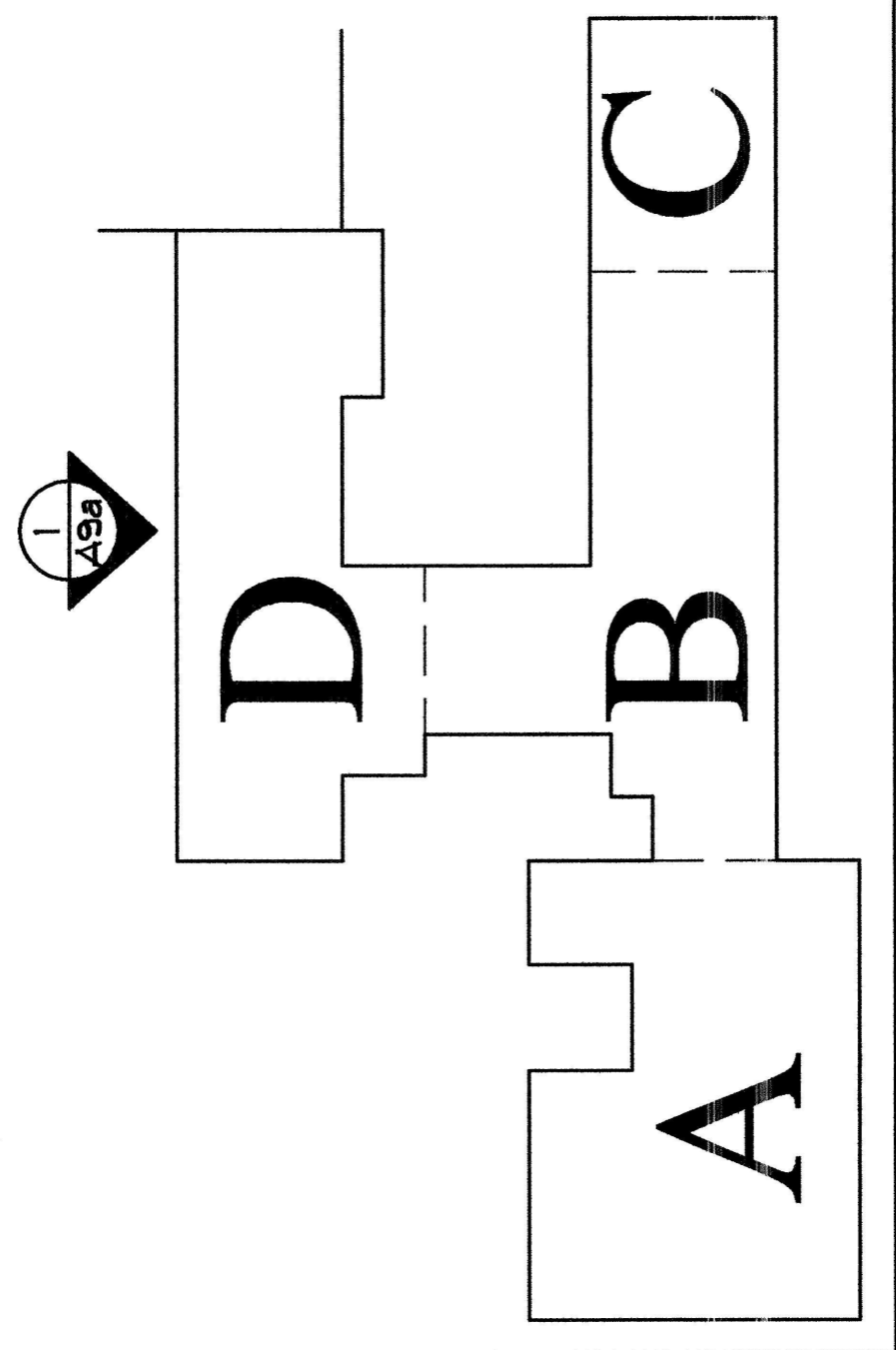


EASTLAND HOTEL

REFER TO DRAWING A.10 FOR ELEVATIONS IN THIS AREA

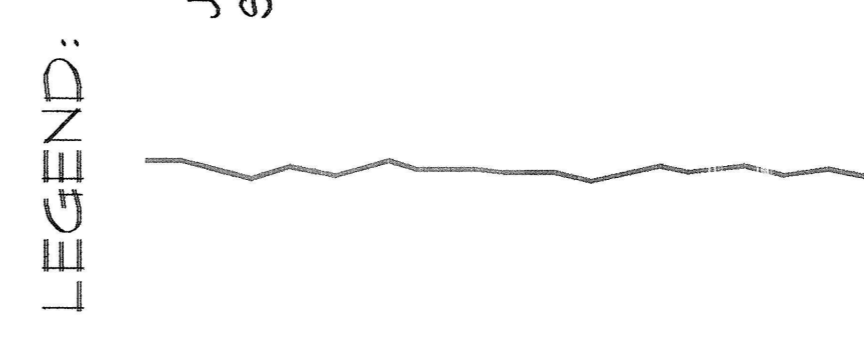


1 EXTERIOR ELEVATION
 A.9a SCALE: 1/8" = 1'-0"



FOREST AVENUE

CONGRESS STREET



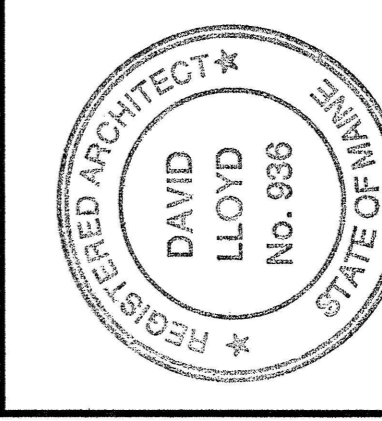
LEGEND:

JAGGED LINE INDICATES AREAS OF STEEL JACKING.

KEYED NOTES:

- 1 THIS FACADE BUILDING "D" - ARCHED BRICK HEADERS & STONE SILL UNO.
- 2 AREA OF STEEL JACKING - SEE DRAWING 2a-d/A12.

KEY PLAN
 SCALE: NONE



Owner:
 PLAZA ASSOCIATES AT
 CONGRESS SQUARE LP,
 PACS, LLC d/b/g GENERAL PARTNER
 491 HUMPHREY STREET
 SWAMPSCOTT, MA 01907

Architect:
ARCHETYPE, P.A.
 ARCHITECTS
 48 Union Wharf Portland, Maine 04101
 (207) 772-6022 Fax (207) 772-4056

Project:
 RENOVATION OF
 CONGRESS SQUARE PLAZA
 10 CONGRESS SQUARE PLAZA
 PORTLAND, MAINE 04101

Date: FEB 04 2005
 Scale: 1/8" = 1'-0"

Drawing:
EXTERIOR ELEVATIONS

A.9a