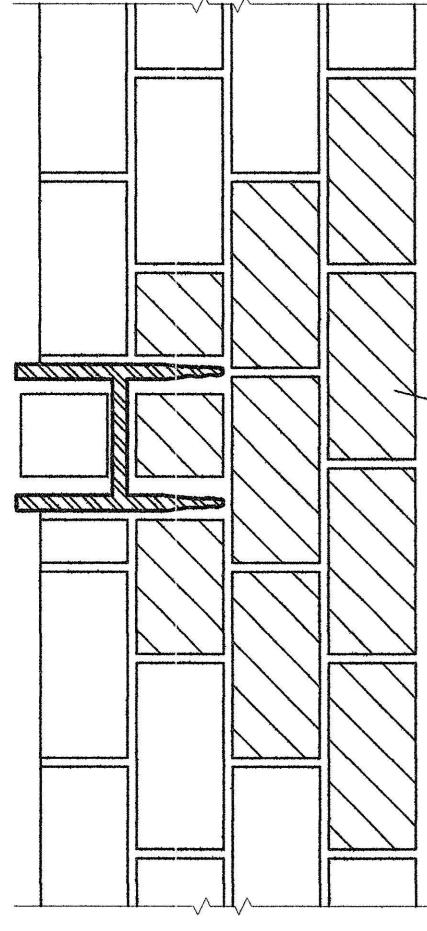
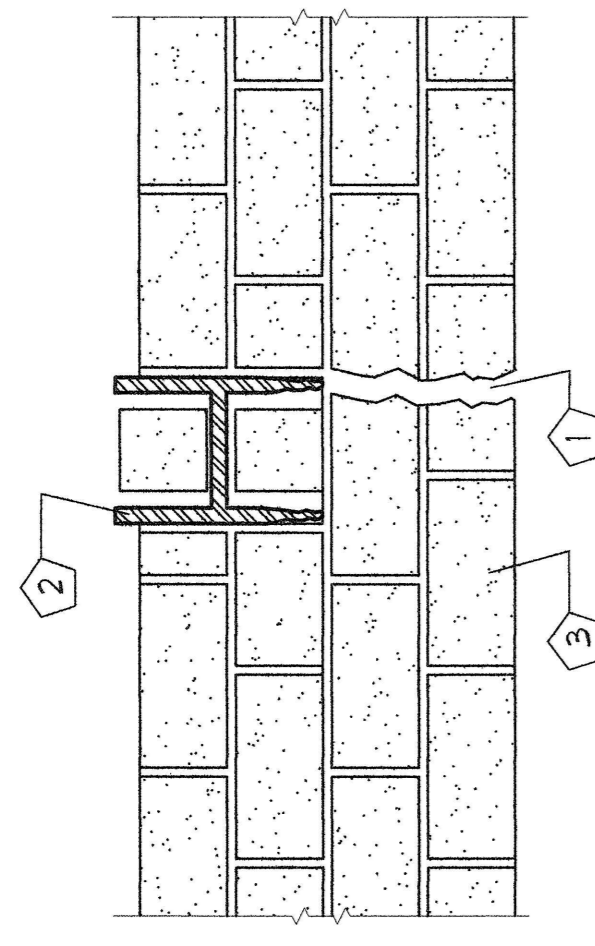


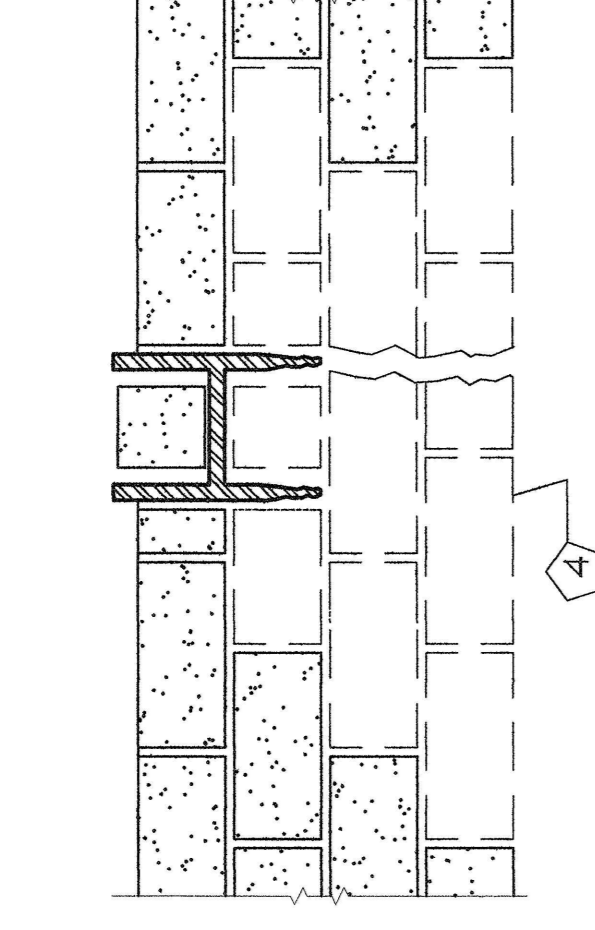
2a
A12 PLAN/SECTION: RUST JACKING,
TREATMENT OF THE EXPOSED STEEL.
SCALE: 1 1/2" = 1'-0"



2b
A12 PLAN/SECTION: RUST JACKING,
REBUILD MASONRY WALL.
SCALE: 1 1/2" = 1'-0"

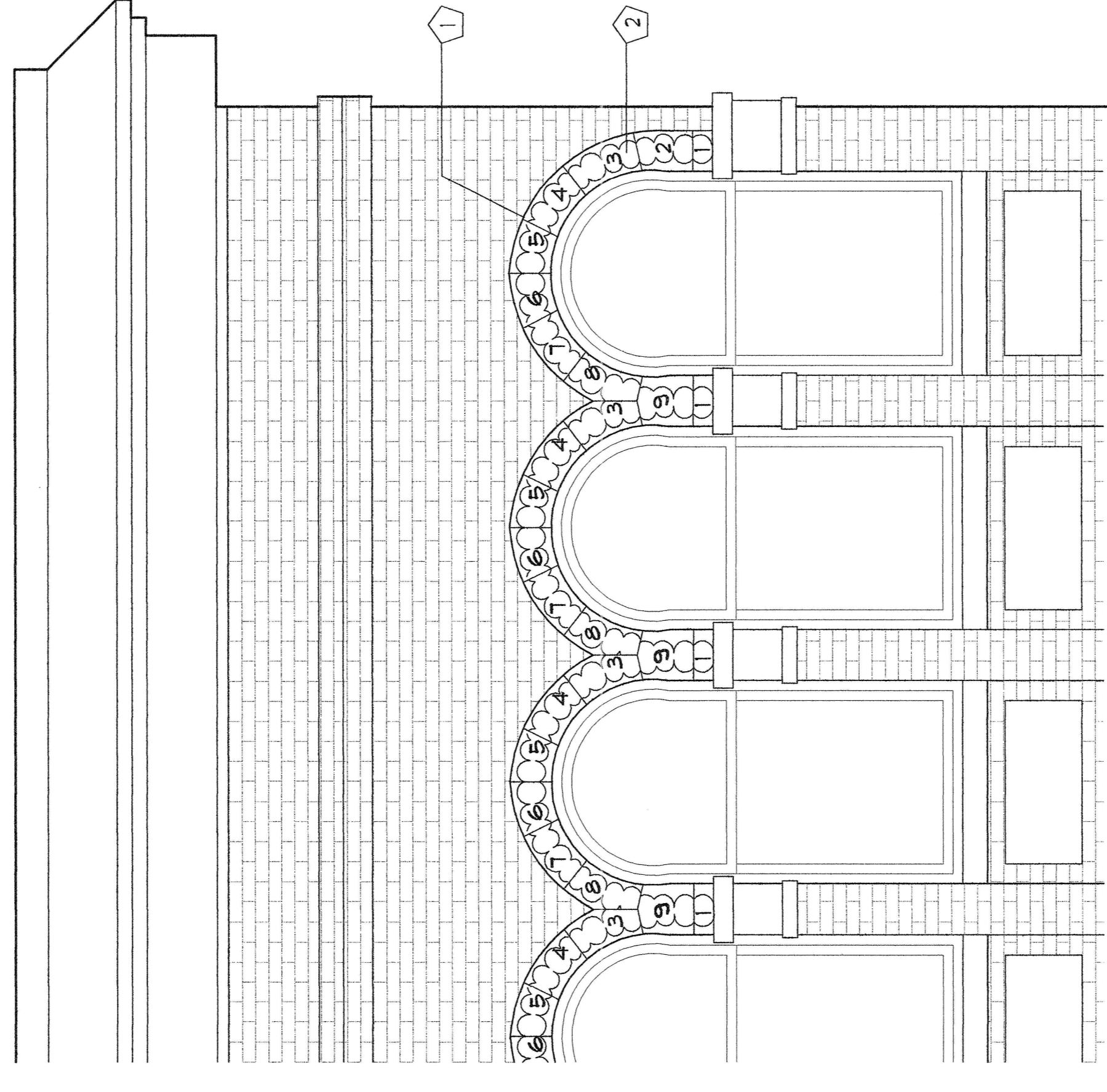


2c
A12 PLAN/SECTION: RUST JACKING,
EXISTING CONDITION.
SCALE: 1 1/2" = 1'-0"



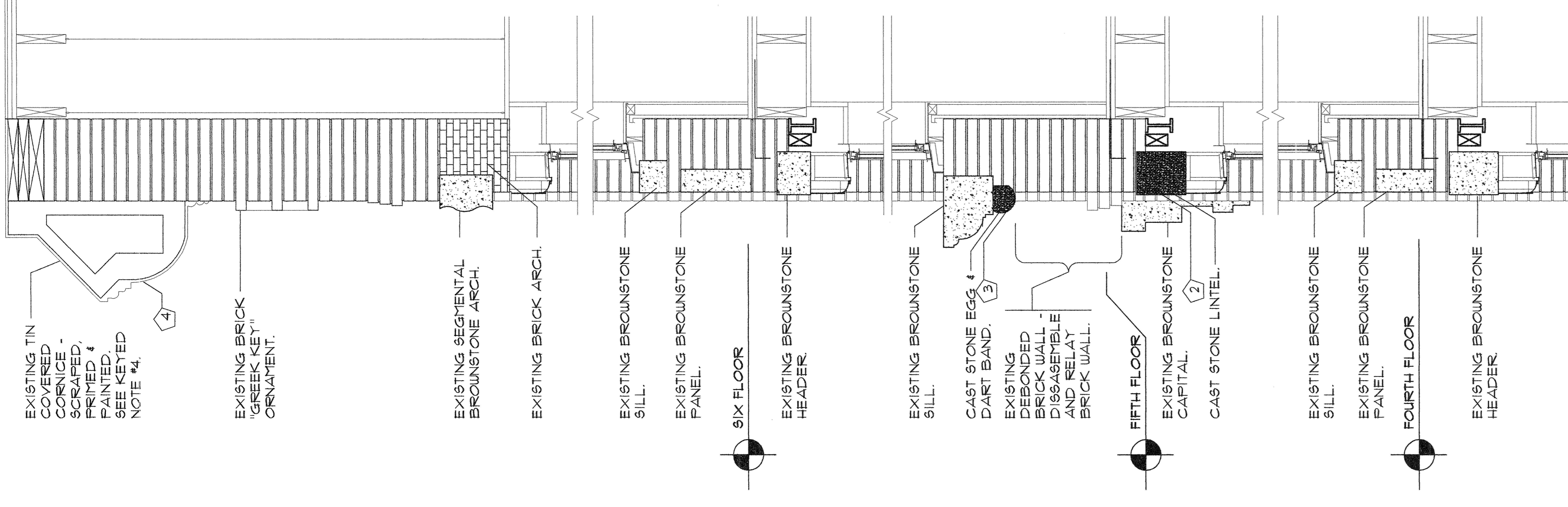
2d
A12 PLAN/SECTION: RUST JACKING,
REMOVAL OF ADJACENT MASONRY
TO EXPOSE THE STEEL.
SCALE: 1 1/2" = 1'-0"

- KEYED NOTES:
- 1 BRICK MASONRY: CRACK INDICATING STEEL JACKING - LOCATIONS PER EXTERIOR ELEVATION DRAWINGS A1 - A11.
 - 2 EXISTING STEEL COLUMN.
 - 3 EXISTING BRICK MASONRY WALL.
 - 4 DASHED LINES INDICATE REMOVAL OF BRICK BY TOOTHING OUT INDIVIDUAL BRICKS.
 - 5 RUSTED AREAS OF STEEL - TYPICAL AREAS AND REMOVE ALL RUSTED AREAS OF STEEL TO A SURFACE FREE OF CORROSION. PER MANUFACTURER'S WRITTEN INSTRUCTIONS APPLY TRC HIGH ZINC CONTENT COATING TO EXPOSED STEEL. (TRC WORLDWIDE, 145 202500) (SEE DR. THARSHFIELD, MA 02056)
 - 6 CROSS-HATCHED AREAS INDICATE AREA OF REBUILD BRICK MASONRY WALL.



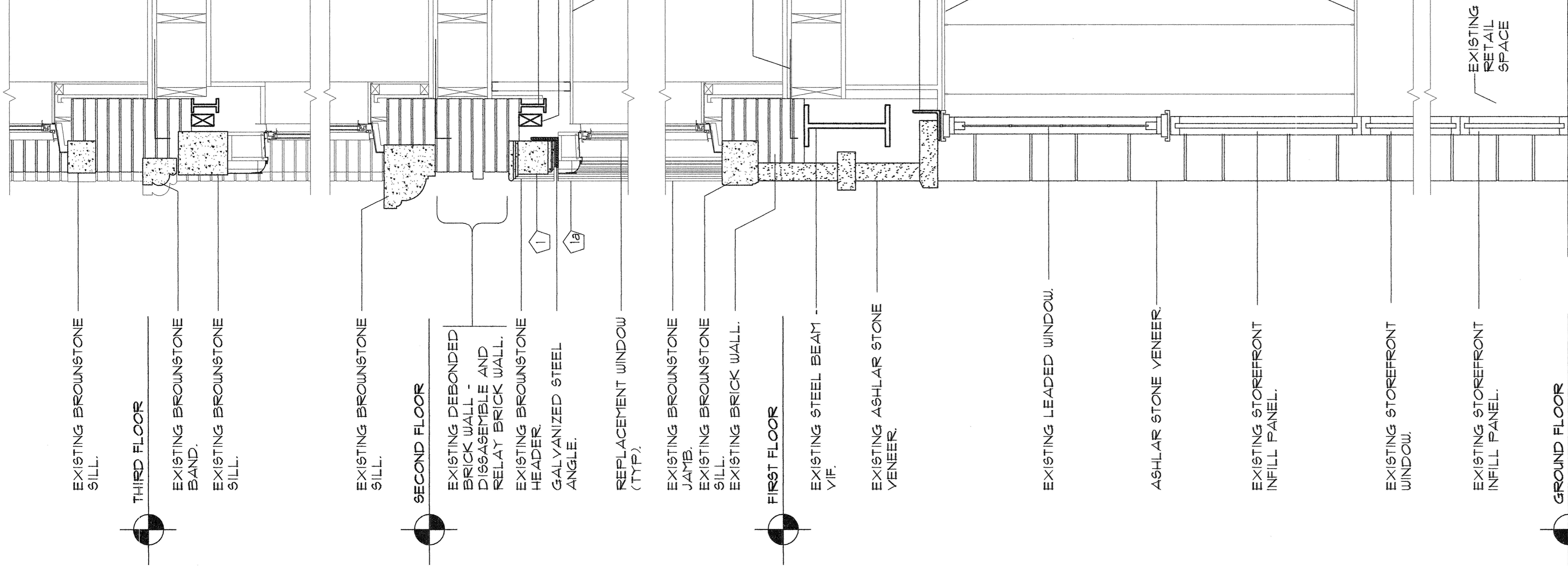
3
A12 BUILDING "A" - BROWNSTONE
SEGMENTED ARCH HOODS
SCALE: 1/2" = 1'-0"

- KEYED NOTES:
- 1 EXISTING BROWNSTONE SEGMENTED ARCH HOODS.
 - 2 ARCH SEGMENTS NUMBERED 1-9. CONTRACTOR IS TO INCLUDE IN HIS BID REPLACEMENT OF 15% OF THE SEGMENTS (VARYING IN SIZE AND LOCATION) WITH PRECAST STONE SEGMENTS TO MATCH THOSE REMOVED. CONTRACTOR TO MATCH THOSE REMOVED WILL BE DETERMINED BY THE EXTENT OF EXFOLIATION OF THE EXISTING BROWNSTONE - SUBJECT TO APPROVAL BY THE ARCHITECT.



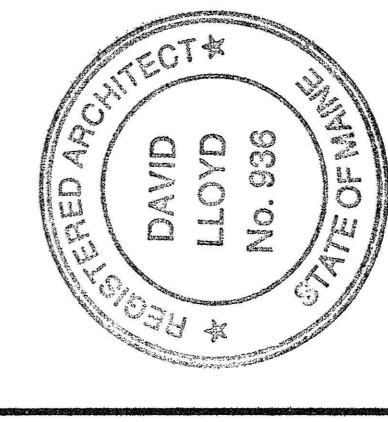
- KEYED NOTES:
- 1 REMOVE EXISTING BROWNSTONE LINTEL. REPLACE WITH CAST STONE LINTEL TO MATCH. IN-FILL AT ALL FIFTH FLOOR BUILDING "A" WINDOWS.
 - 2 REMOVE EXISTING BROWNSTONE EGGS & DART BAND. REPLACE WITH CAST STONE EGGS & DART BAND IN TOTAL. (TYPICAL FOR EGGS & DART BAND IN TOTAL)
 - 3 PRIMERS: (1) COAT SERIES 995 CHEM-BUILD EPOXY (2) CHEM-BOND 995 CHEM-BOND EPOXY (3) 9075 ALIPHATIC ACRYLIC BY TENECC. APPLY PER MANUFACTURER'S WRITTEN INSTRUCTIONS.

1a
A12 TYPICAL WALL SECTION - BUILDING "A"
4th - 6th FLOORS
SCALE: 3/4" = 1'-0"



- KEYED NOTES:
- 1 REMOVE EXISTING BROWNSTONE LINTEL. REMOVE EXISTING STEEL ANGLE LINTEL AND STEEL SHIM. INSTALL A36 GALVANIZED STEEL ANGLE LINTEL. REINSTALL EXISTING BROWNSTONE LINTEL. (TYPICAL AT ALL FIRST FLOOR BUILDING "A" WINDOWS)
 - 2 REPAIR DAMAGED BROWNSTONE JAMBS PER SECTION 043602 - TYPICAL AT ALL SECOND FLOOR JAMBS.

1b
A12 TYPICAL WALL SECTION - BUILDING "A"
GROUND - 3rd FLOORS
SCALE: 3/4" = 1'-0"



Owner:
PLAZA ASSOCIATES AT
CONGRESS SQUARE L.P.
PACS, LLC its GENERAL PARTNER
491 HUMPHREY STREET
SWAMPSCOTT, MA 01907

Architect:
ARCHETYPE, P.A.
ARCHITECTS
48 Union Wharf Portland, Maine 04101
(207) 772-6022 Fax (207) 772-4056

Project:
RENOVATION OF
CONGRESS SQUARE PLAZA
10 CONGRESS SQUARE PLAZA
PORTLAND, MAINE 04101

Date: FEB 04 2005
Scale: As Noted

Drawing:
WALL SECTION - BUILDING "A",
DETAILS

A.12