

OCEAN GATE GARAGE

CUMBERLAND AVENUE AT BROWN STREET
PORTLAND, MAINE

Owner:
Ocean Gate, LLC
151 Newbury Street
Portland, Maine 04101

Developer:
Anew Development, LLC
30 Danforth Street, Suite 213
Portland, Maine 04101
207-272-8550

Consultants:



Architect
Travis Nadeau, Architect
Two Great Falls Plaza
Auburn, Maine 04210
207.784-2941

RANSOM
Consulting, Inc.
Civil Engineer
Ransom Consulting, Inc.
400 Commercial Street, Suite 404
Portland, Maine 04101
207-772-2891



Peter Burke
Landscape Architecture
peter@peterburkedesign.com

PLANTING PLAN

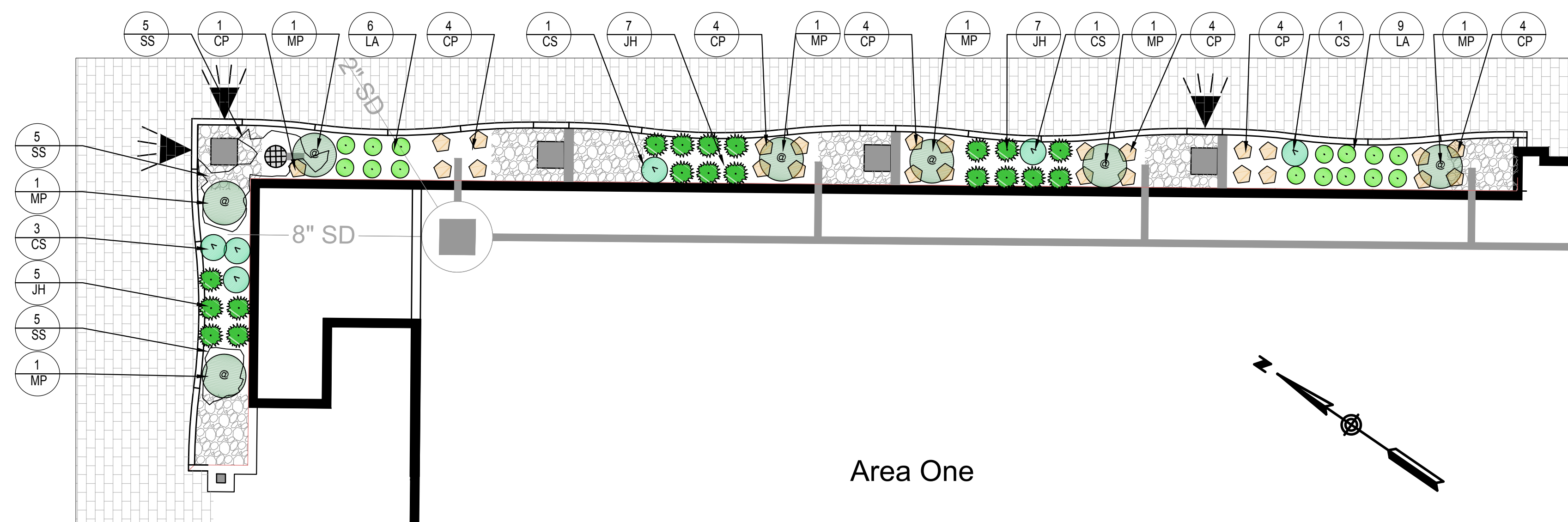
A PRELIMINARY REVIEW 6-22-17

No. Revision/Issue Date

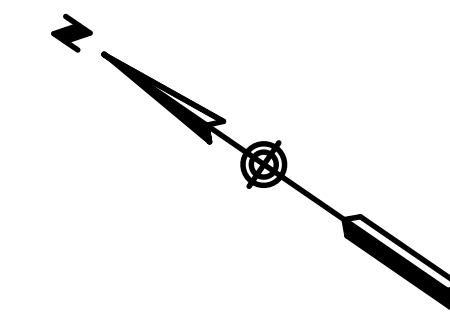
Design by: PAB
Drawn by: PAB
Checked by:
Approved by:
Project: 06-20-2017

Sheet No:

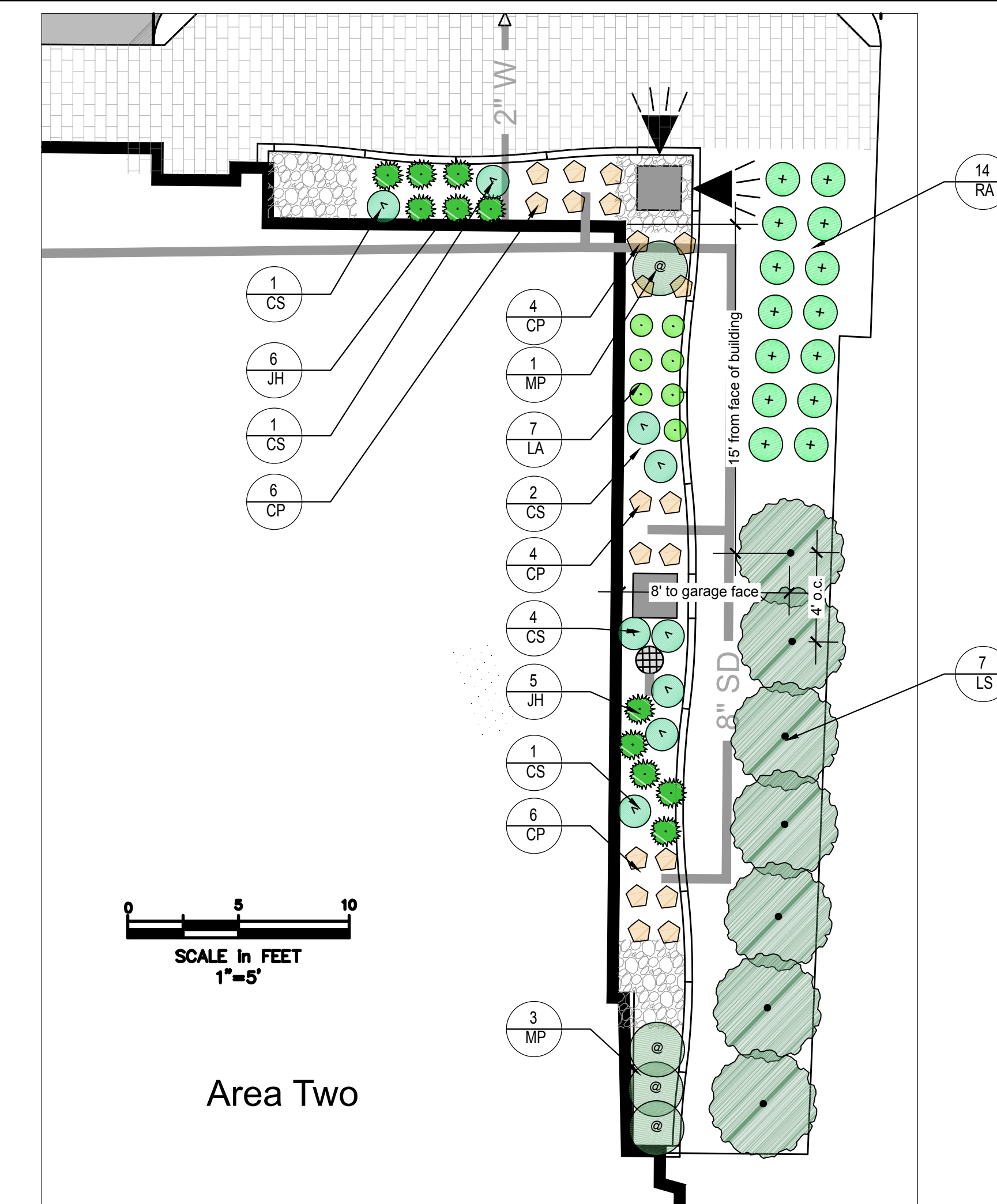
L1



Area One

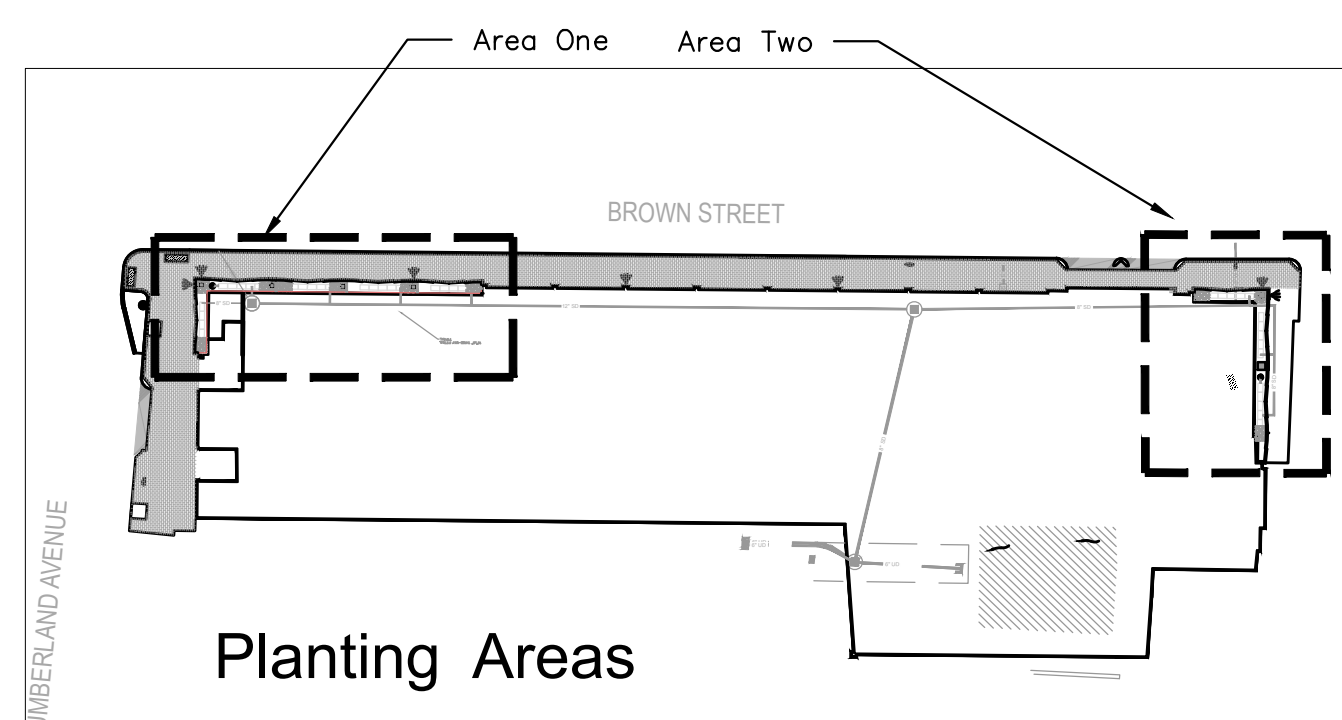


0 5 10
SCALE in FEET
1"=5'



Area Two

0 5 10
SCALE in FEET
1"=5'



Planting Areas

FOR REVIEW
NOT FOR CONSTRUCTION

NOTES

- CONTRACTOR SHALL BEGIN MAINTENANCE IMMEDIATELY AFTER PLANTING AND SHALL CONTINUE UNTIL FINAL ACCEPTANCE. CONTRACTOR SHALL BE RESPONSIBLE FOR ALL MEANS AND METHODS OF WATERING AND MAINTENANCE.
- CONTRACTOR SHALL SUPPLY PLANTS IN QUANTITIES SUFFICIENT TO COMPLETE WORK SHOWN ON THE PLAN. ANY DISCREPANCY BETWEEN THE QUANTITIES SHOWN IN THE PLANT SCHEDULE AND THOSE REQUIRED ON THE PLAN SHALL BE CLARIFIED WITH THE LANDSCAPE ARCHITECT PRIOR TO ORDERING PLANT MATERIAL.
- ALL MATERIALS SHALL CONFORM TO SPECIFICATIONS OF THE AMERICAN STANDARDS FOR NURSERY STOCK (LATEST EDITION) AS SET FORTH BY THE AMERICAN ASSOCIATION OF NURSERYMEN.
- ALL PLANTS SHALL BEAR THE SAME RELATIONSHIP TO FINISH GRADE AS THE ORIGINAL GRADES BEFORE DIGGING.
- THE LANDSCAPE CONTRACTOR SHALL GUARANTEE ALL PLANT MATERIALS FOR ONE (1) FULL YEAR FROM DATE OF SUBSTANTIAL COMPLETION.
- ALL PLANT MATERIALS ARE SUBJECT TO THE APPROVAL OF THE LANDSCAPE ARCHITECT AT THE SITE.
- CONTRACTOR SHALL NOTIFY LANDSCAPE ARCHITECT 48 HOURS PRIOR TO PLANTING.
- ALL ROOT WRAPPING AND CONTAINER MATERIAL MADE OF SYNTHETICS OR PLASTICS SHALL BE REMOVED AT THE TIME OF PLANTING.
- ALL PLANTS SHALL BE INSTALLED AS PER DETAILS AND THE CONTRACT SPECIFICATIONS. THE LANDSCAPE CONTRACTOR SHALL REFER TO THE STORMWATER TREATMENT DETAILS AND SPECIFICATIONS FOR ADDITIONAL REQUIREMENTS.



KEY	BOTANICAL NAME	COMMON NAME	SIZE	#	NOTES
LS	Liquidambar styraciflua 'Slender Silhouette'	Columnar Sweetgum	#7	7	
LA	Leymus arenarius 'Blue Dune'	Blue Lyme Grass	#2	22	
CP	Comptonia peregrina	Sweet Fern	#2	45	
JH	Juniperus horizontalis 'Bar Harbor'	Bar Harbor Creeping Juniper	#3	30	
MP	Myrica pensylvanica	Bayberry	#5	10	
RA	Rhus aromatica 'Gro-Low'	'Gro-Low' Fragrant Sumac	#2	14	
CS	Cornus sericea 'Kelseyi'	Dwarf Red Twiggid Dogwood	#2	14	
SS	Sedum	Sedum	#1	15	Random mix of groundhugging spp.