

OCEAN GATE GARAGE

CUMBERLAND AVENUE AT BROWN STREET
PORTLAND, MAINE

Developer:
Anew Development, LLC
30 Danforth Street, Suite 213
Portland, Maine 04101
207-272-8550

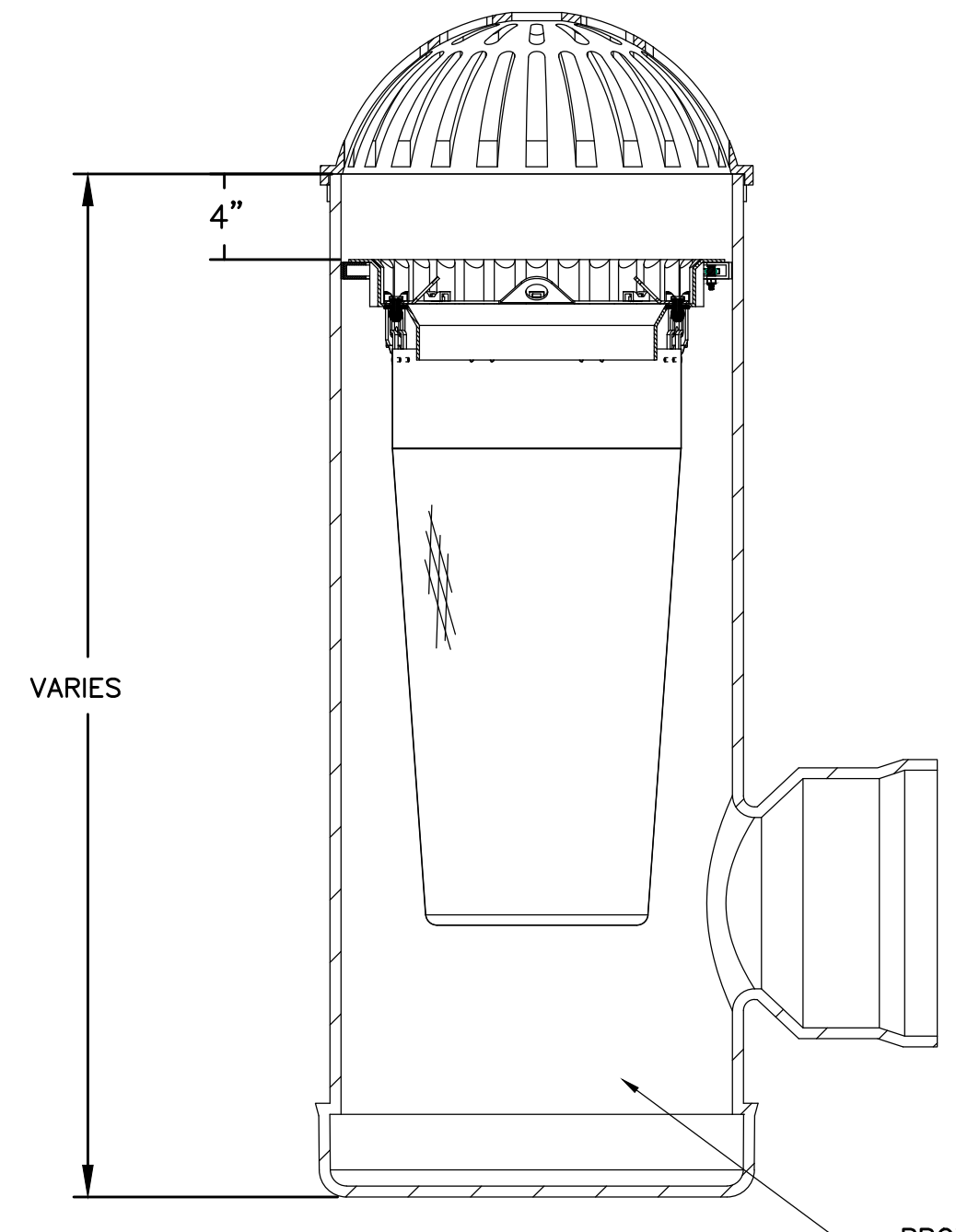
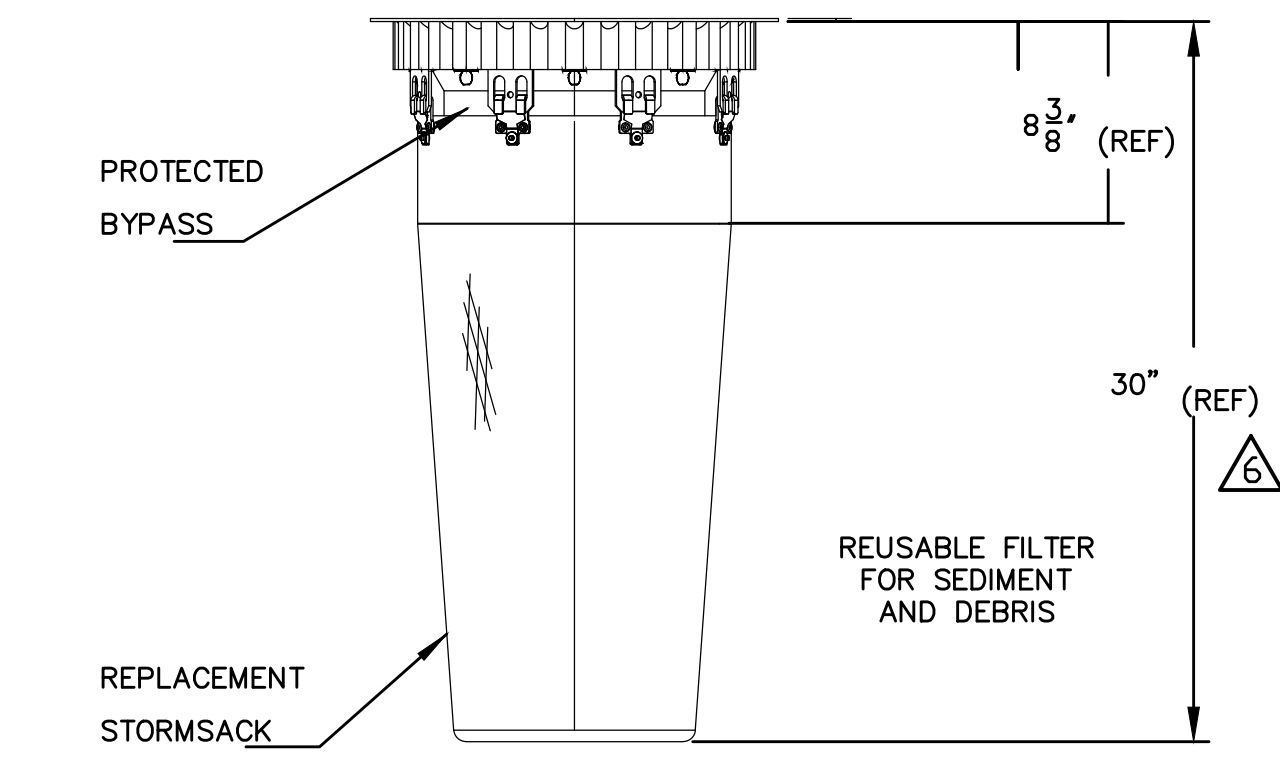
Consultants:



Architect
Travis Nadeau, Architect
Two Great Falls Plaza
Auburn, Maine 04210
207.784-2941

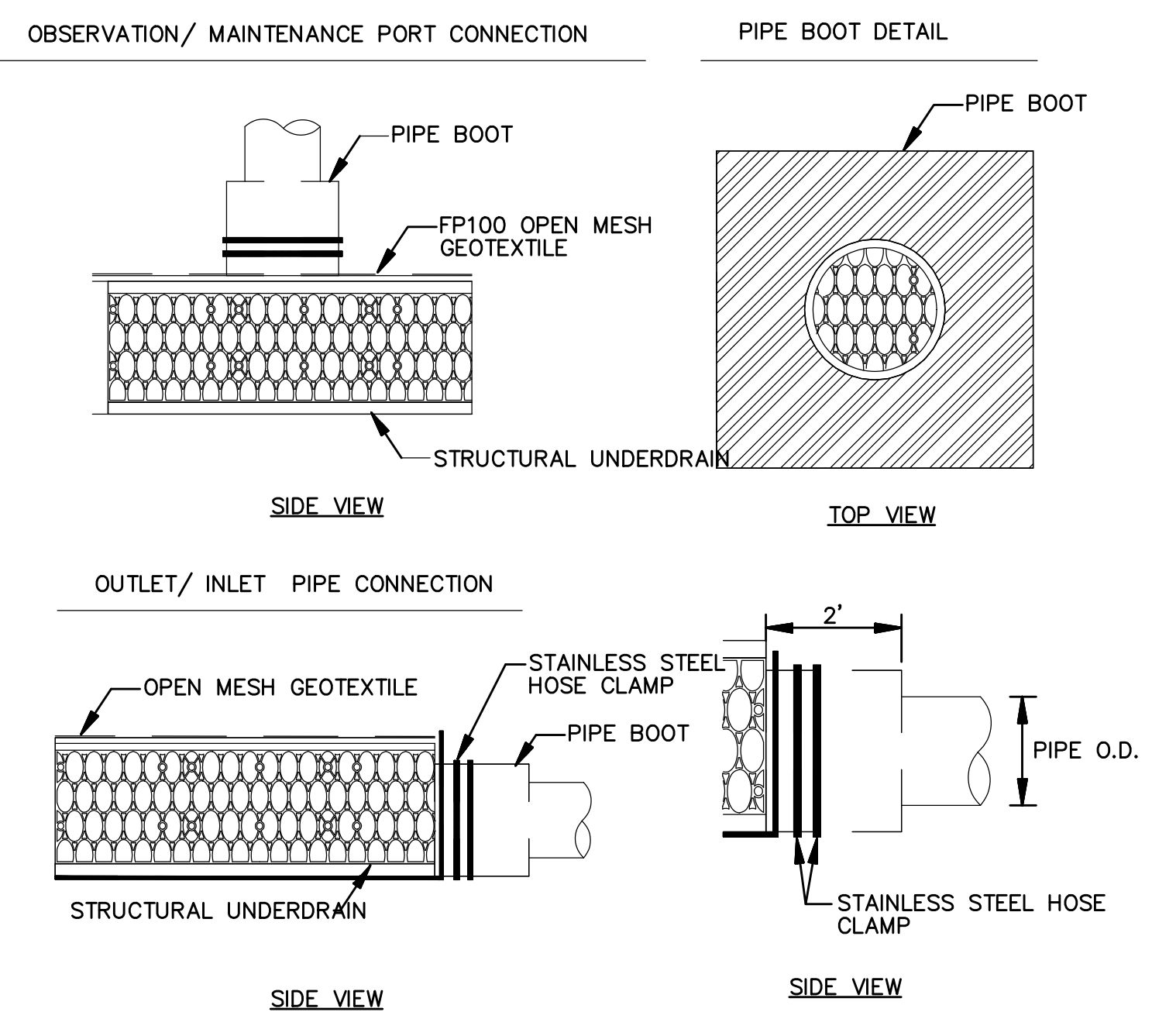


Civil Engineer
Ransom Consulting, Inc.
400 Commercial Street, Suite 404
Portland, Maine 04101
207-772-2891

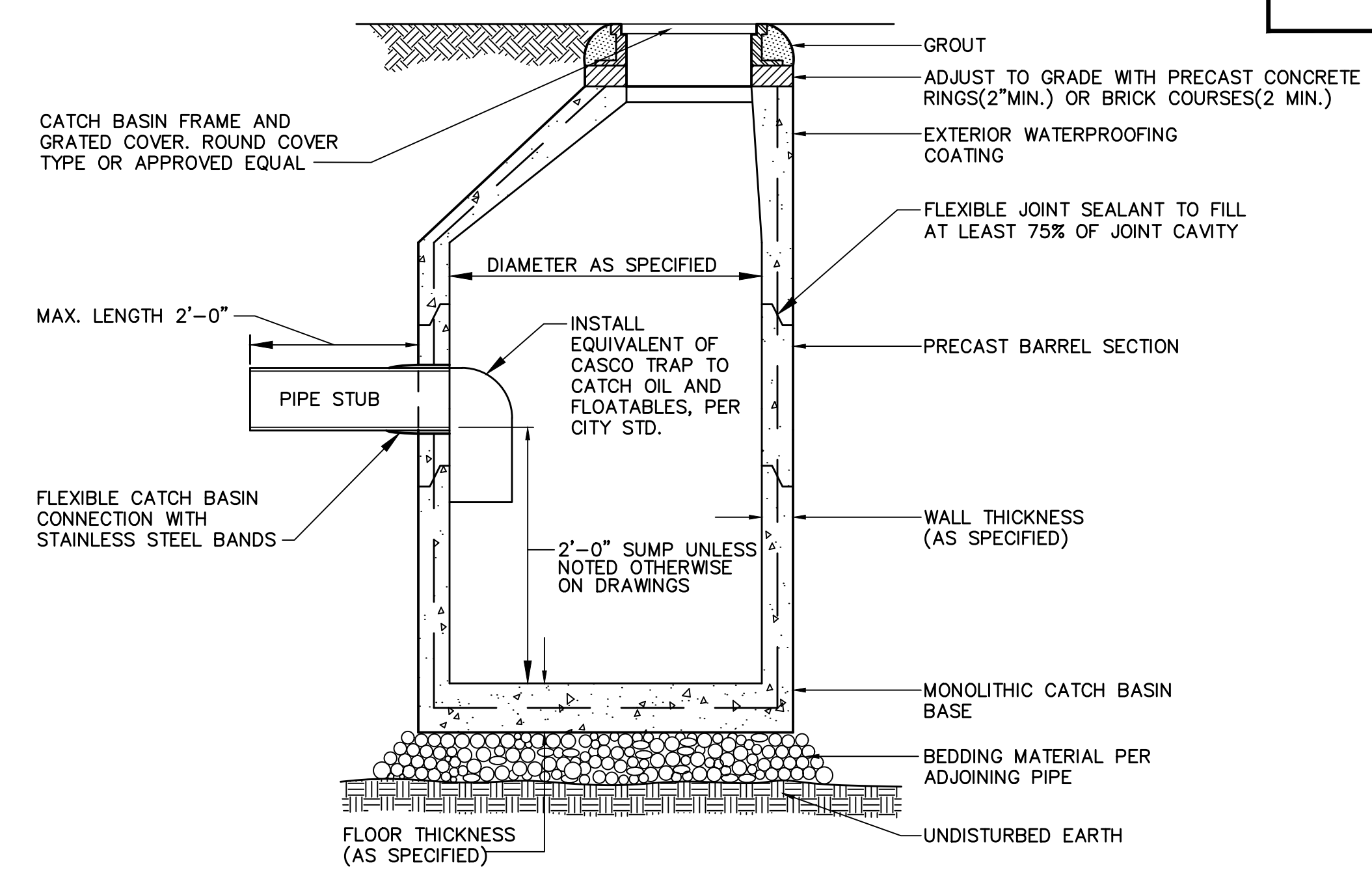


- NOTES FOR 9780-1-000 18" CATCH-IT:
- PERFORMANCE CHARACTERISTICS (TYP):
 - A) DEBRIS CAPACITY: 1.65 CU-FT
 - B) FILTERED FLOW RATE: 1440 GPM (2.5 CFS)
 - C) BYPASS FLOW RATE: 445 GPM (1.0 CFS)
 - USE ONLY WITH FABCO REPLACEABLE STORMSACK, P/N: 9780-1-200

18" FABCO BEEHIVE OVERFLOW FILTER HARCO RISER
NOT TO SCALE



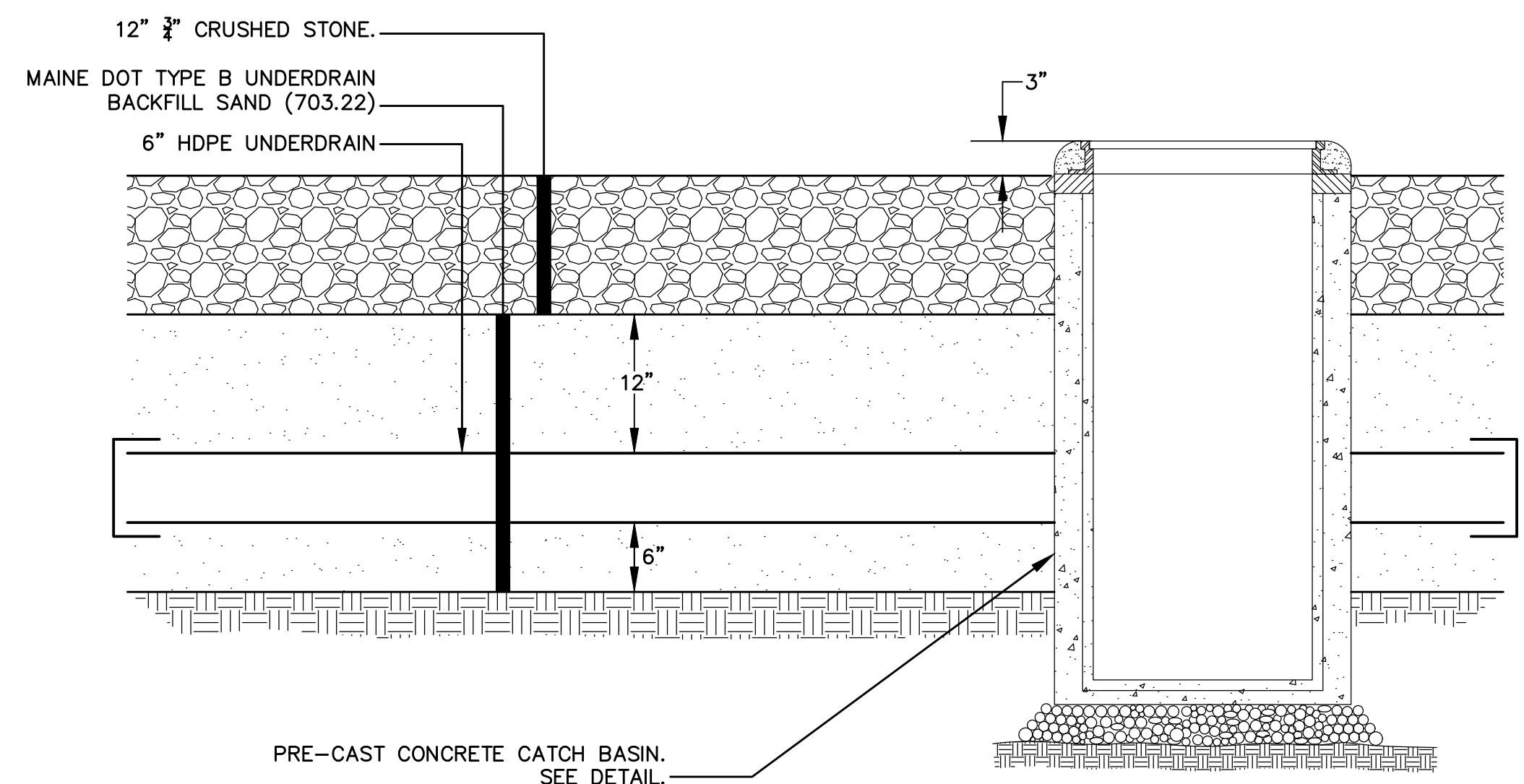
R-TANK PIPE AND OBSERVATION PORT CONNECTIONS
NOT TO SCALE



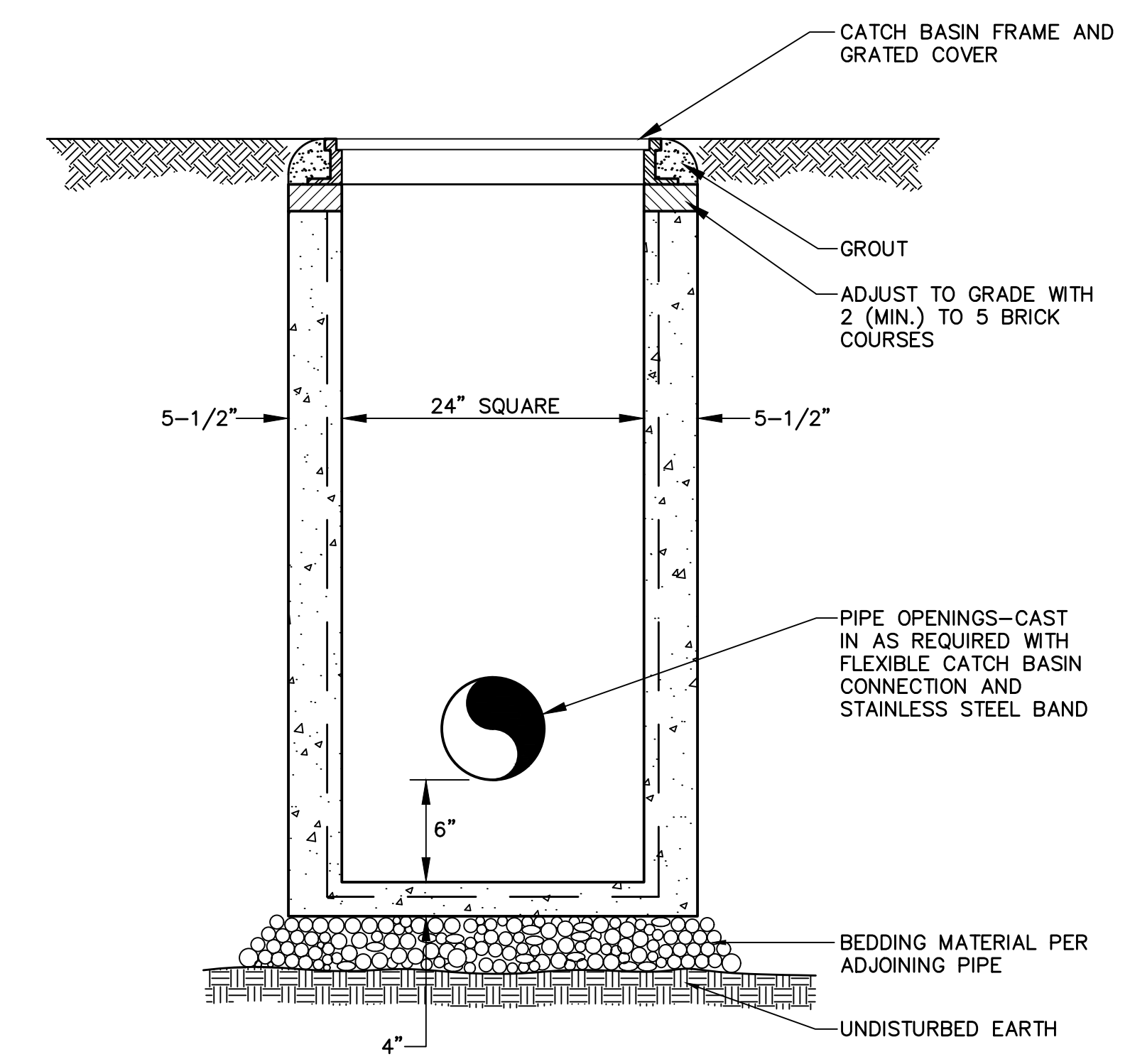
ALL MANHOLE PENETRATIONS SHALL HAVE ELASTOMERIC BOOT WITH DOUBLE STAINLESS STEEL PIPE BANDS, KOR-N-SEAL OR APPROVED EQUAL.

I.D.	WALL WIDTH	FLOOR THICKNESS
4'-0"	5"	6"
5'-0"	6"	6"
6'-0"	7"	6"

PRECAST CONCRETE CATCH BASIN/MANHOLE
NOT TO SCALE



UNDERDRAINED SAND FILTER
NOT TO SCALE



PRECAST CONCRETE CATCH BASIN-TYPE "F"
NOT TO SCALE

DETAILS

No.	Revision/Issue	Date
A	PRELIMINARY REVIEW	6-13-17

Design by:	TGN	Checked by:	SJB
Drawn by:	TGN	Approved by:	SJB
Project:	151.06037		06-06-2017

Sheet No: **C7**