

# OCEAN GATE GARAGE

CUMBERLAND AVENUE AT BROWN STREET  
PORTLAND, MAINE

Developer:  
Anew Development, LLC  
30 Danforth Street, Suite 213  
Portland, Maine 04101  
207-272-8550

Consultants:

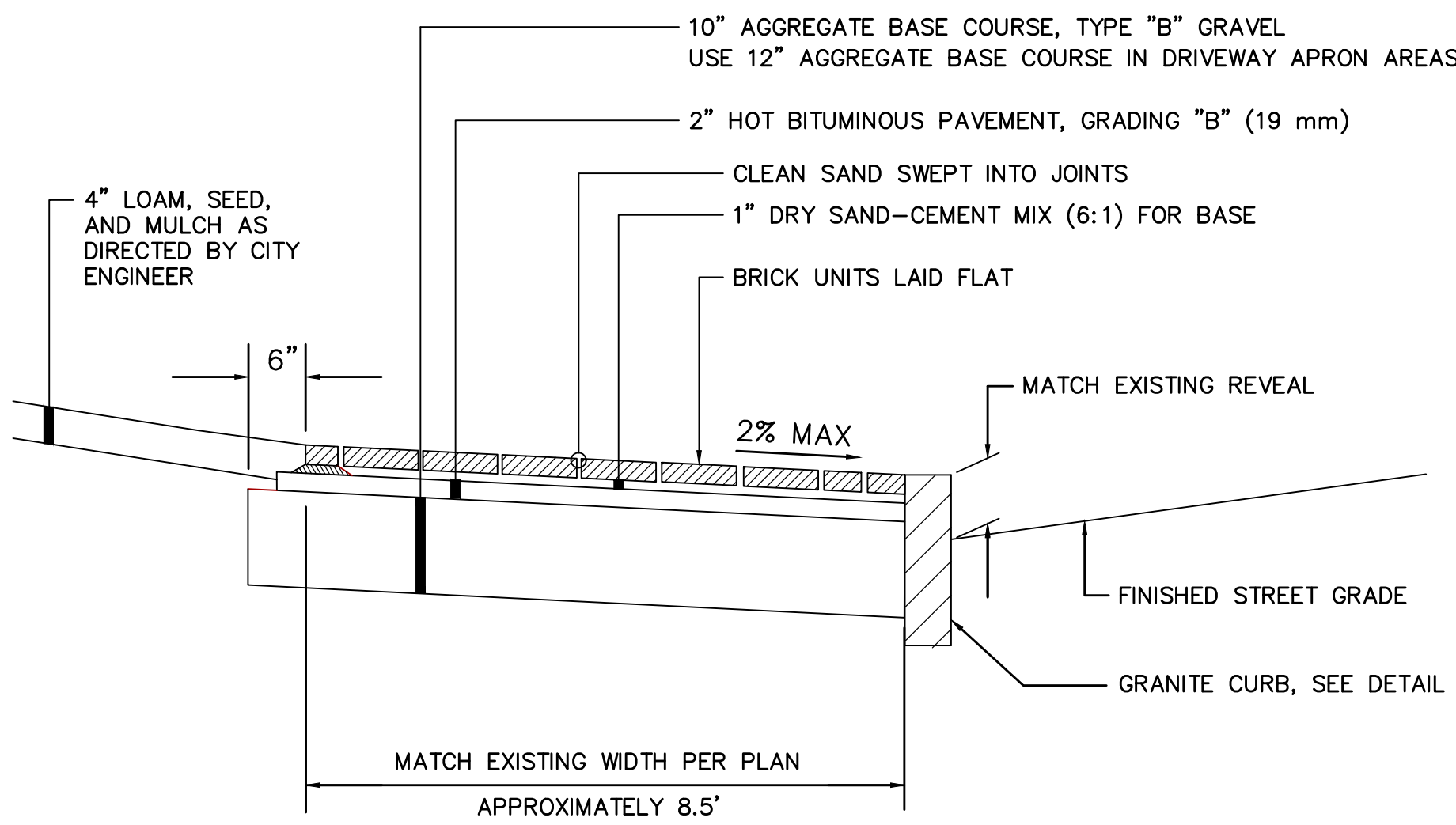


Architect  
Travis Nadeau, Architect  
Two Great Falls Plaza  
Auburn, Maine 04210  
207.784-2941

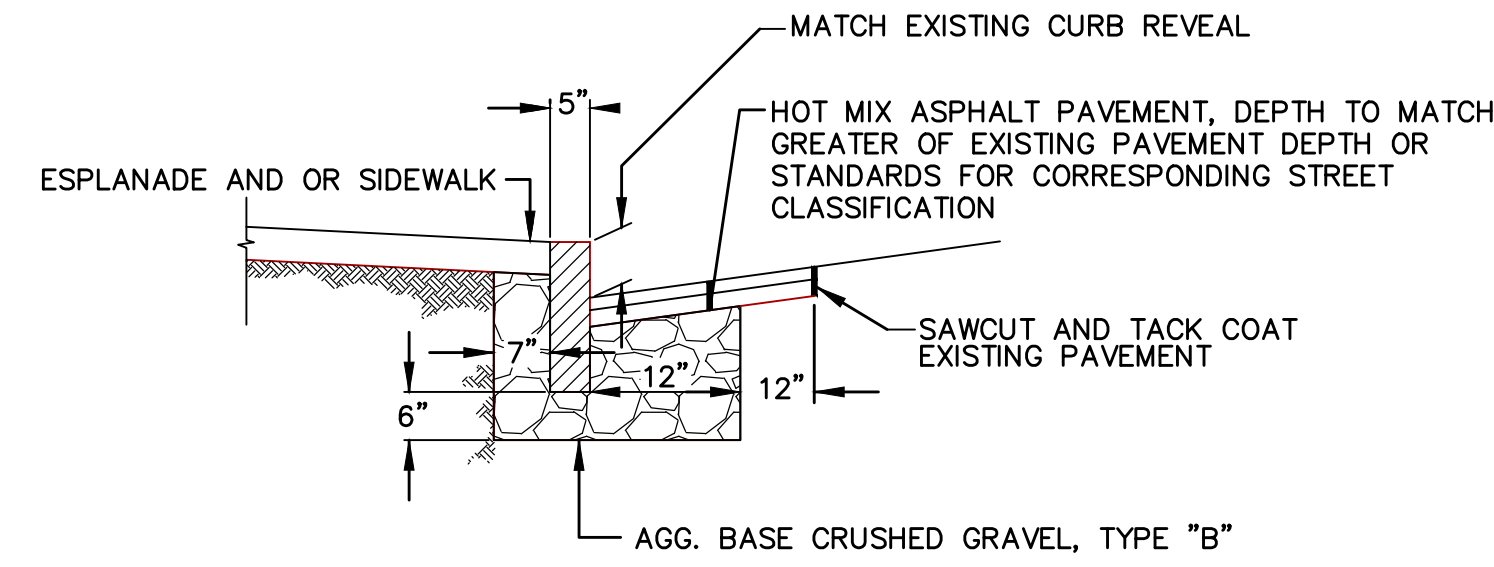


Civil Engineer  
Ransom Consulting, Inc.  
400 Commercial Street, Suite 404  
Portland, Maine 04101  
207-772-2891

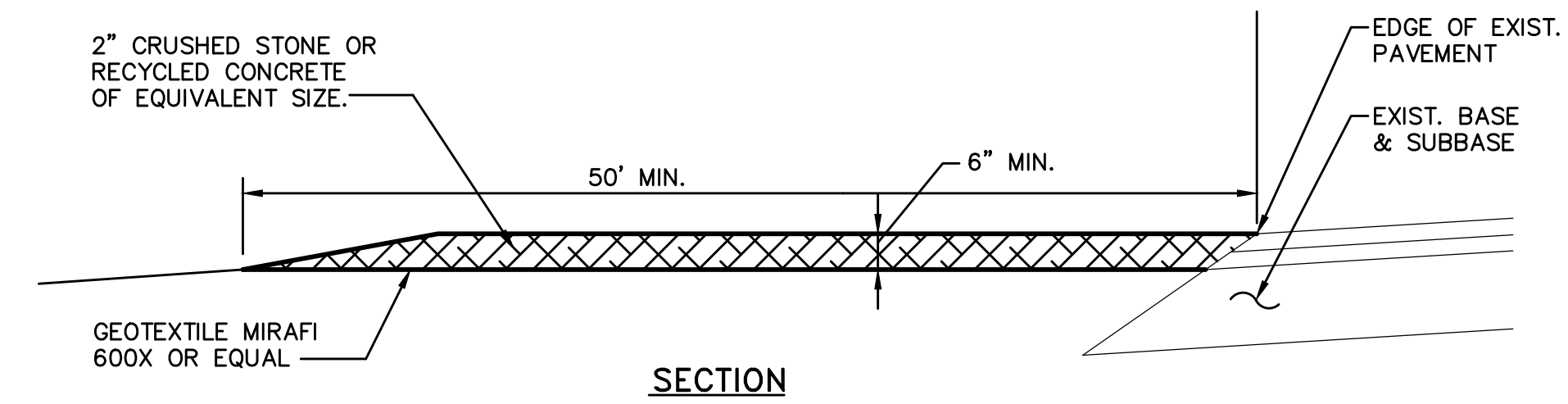
BRICKS SHALL BE:  
Bricks shall be of standard size (2-1/4" x 4" x 8"). Bricks shall be Pine Hall Pathway Paver Brick as manufactured by Pine Hall Brick Co., Madison, North Carolina. Specification number: 4"x8"; LaChance item # 193623, Pine Hall Pathway Paver Brick. Prior to ordering the brick, samples shall be submitted in whole straps to show color range. All base courses and joints shall conform to the applicable subsections of Division 700 of the Standard Specifications



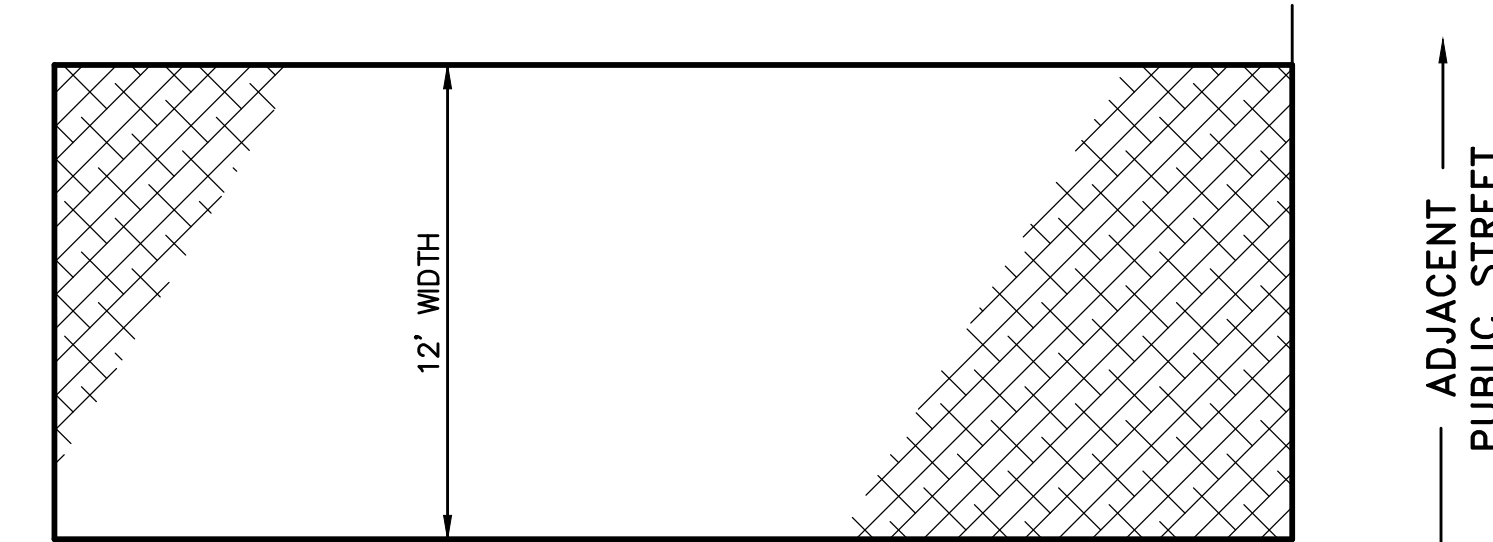
**BRICK SIDEWALK WITH BITUMINOUS BASE**  
NOT TO SCALE



**VERTICAL GRANITE CURB  
INSTALLATION IN EXISTING STREETS**  
NOT TO SCALE



SECTION

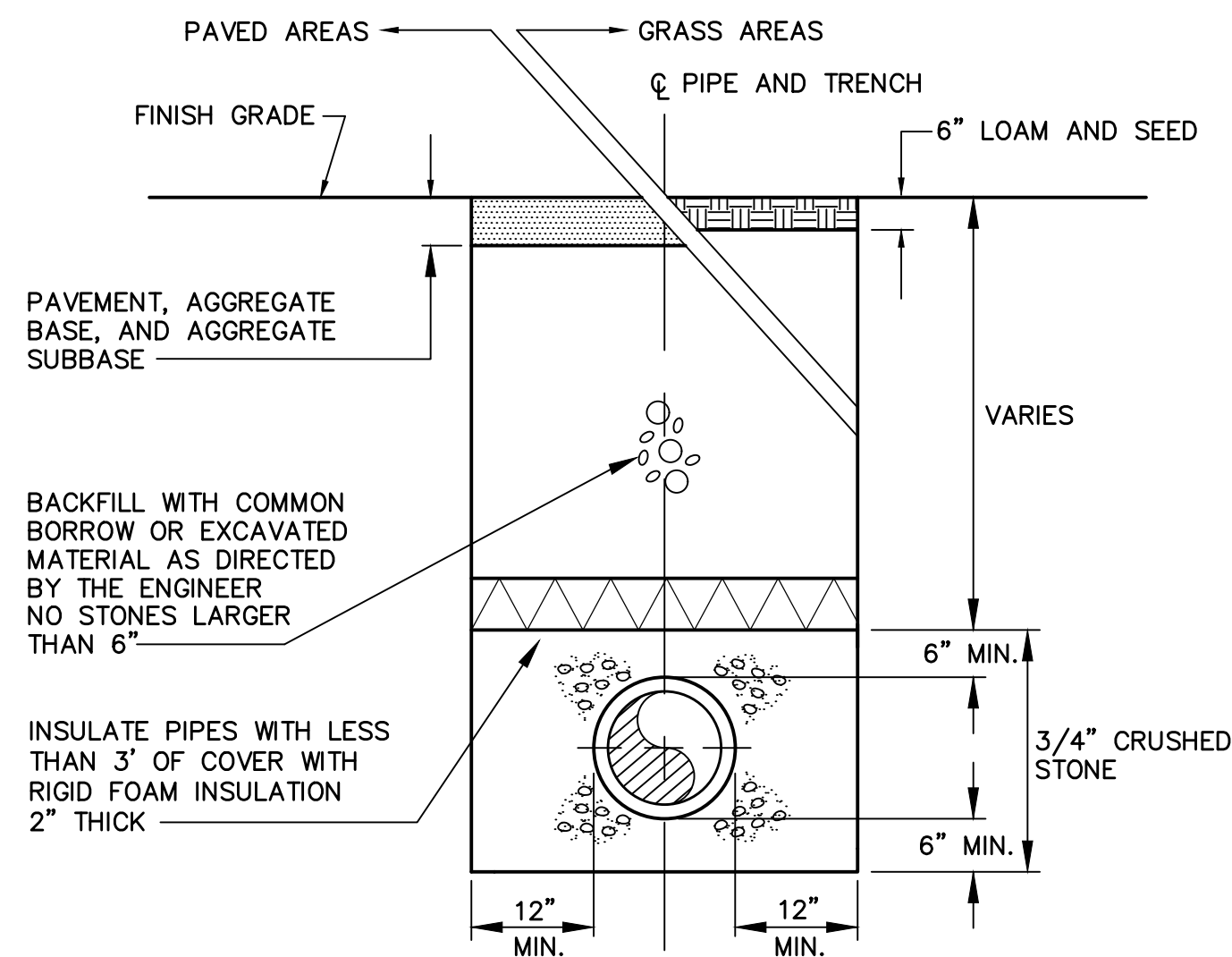


PLAN

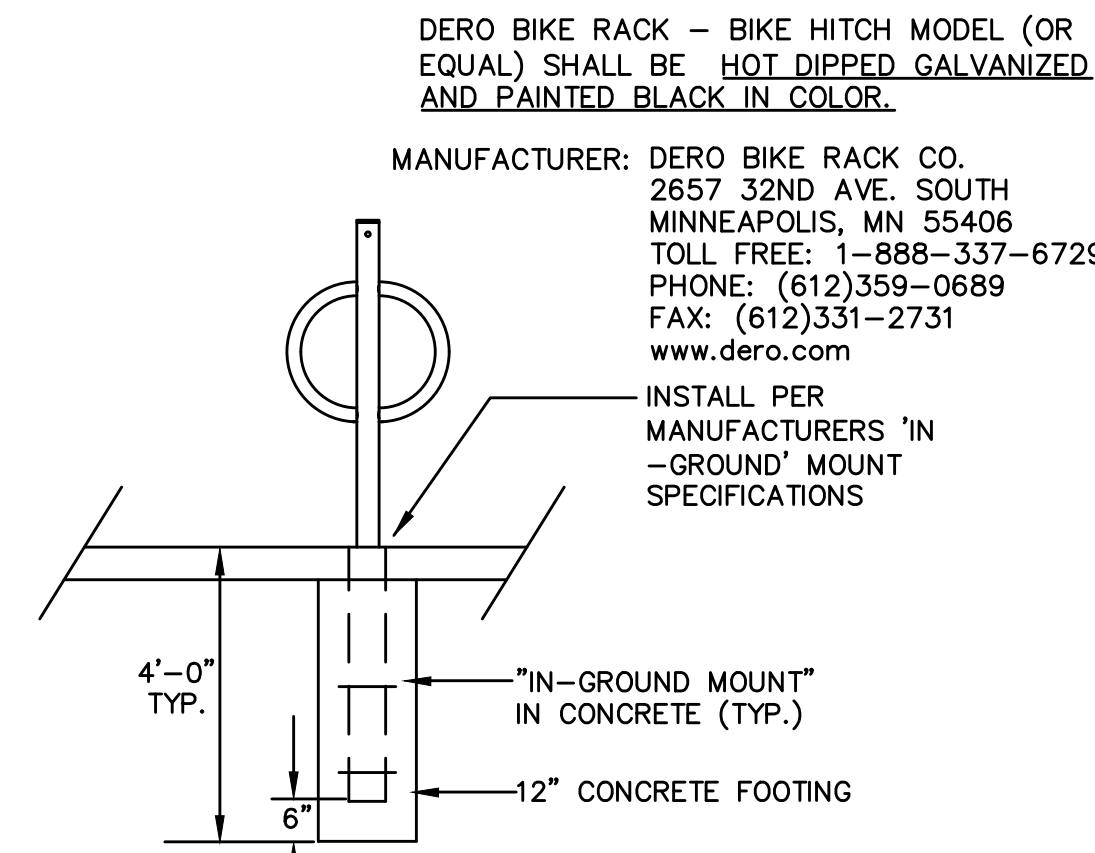
NOTES:

1. MAINTAIN ENTRANCE IN A CONDITION THAT WILL PREVENT TRACKING OF SEDIMENT ONTO PUBLIC RIGHT OF WAY. IF WASHING IS REQUIRED PREVENT SEDIMENT FROM ENTERING WATERWAYS, DITCHES OR STORM DRAINS.
2. REMOVE STABILIZED CONSTRUCTION ENTRANCE TO FINISH PAVEMENT.

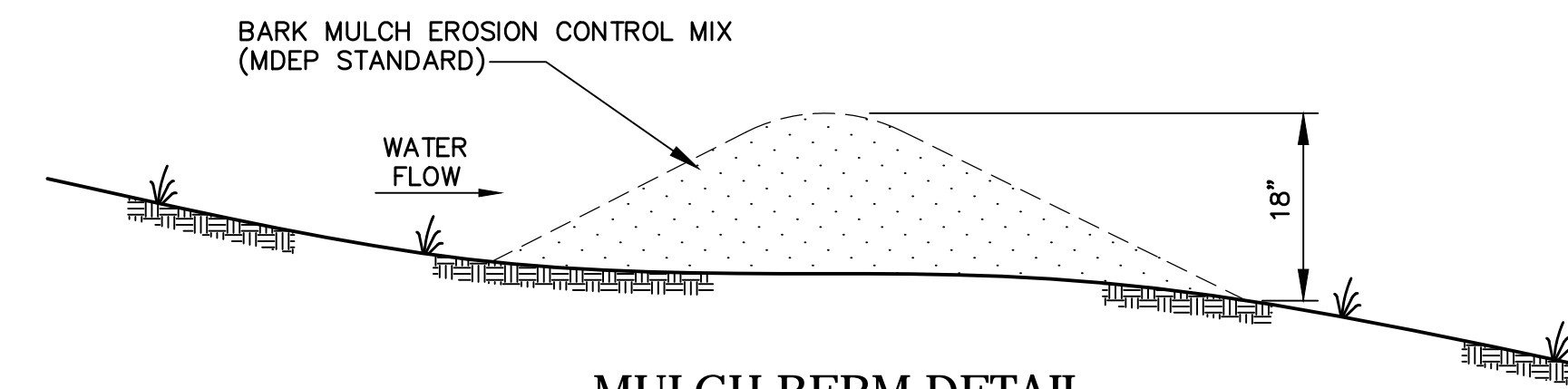
**STABILIZED CONSTRUCTION ENTRANCE**  
NOT TO SCALE



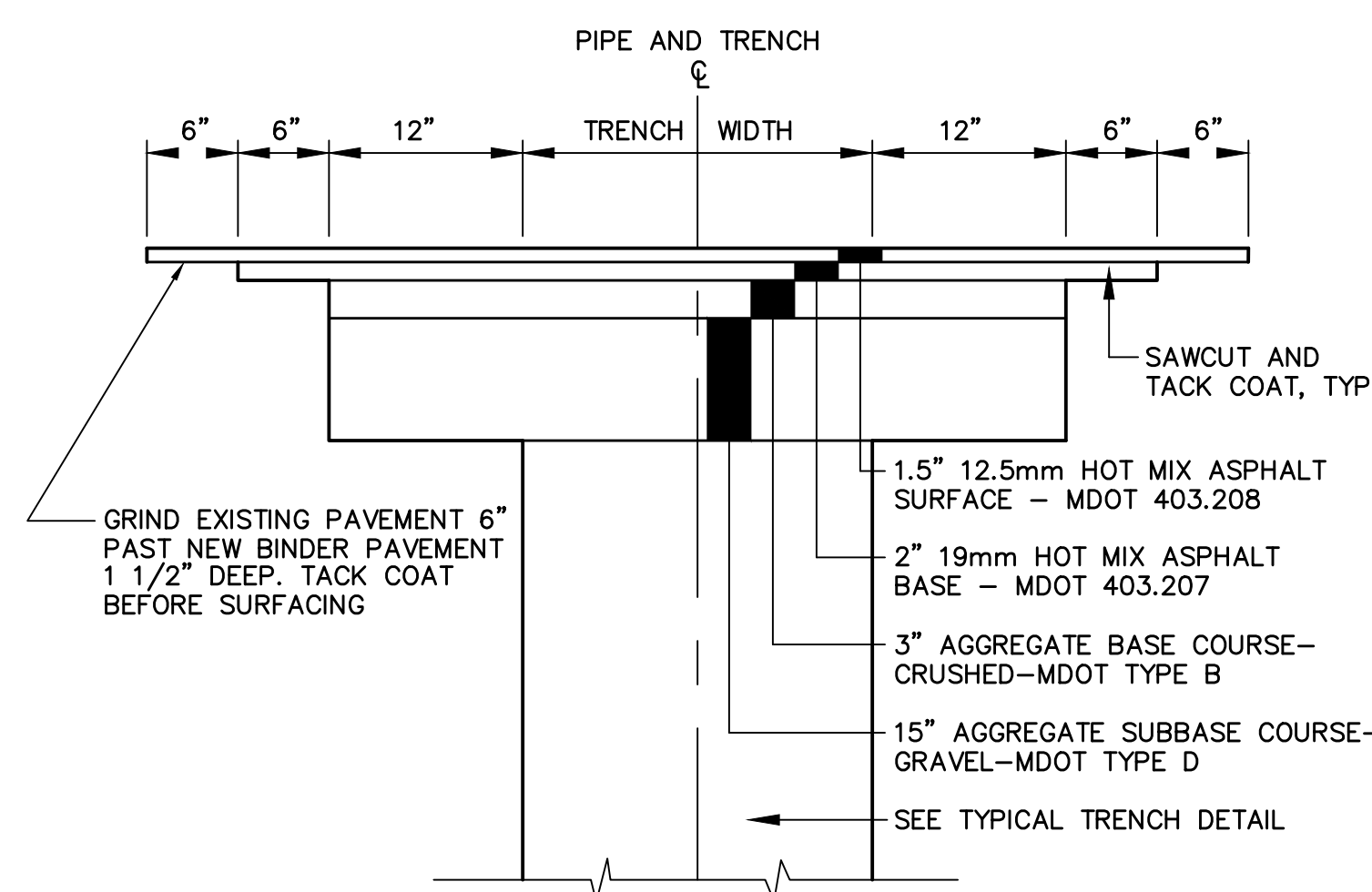
**TYPICAL TRENCH REPAIR DETAIL**  
NOT TO SCALE



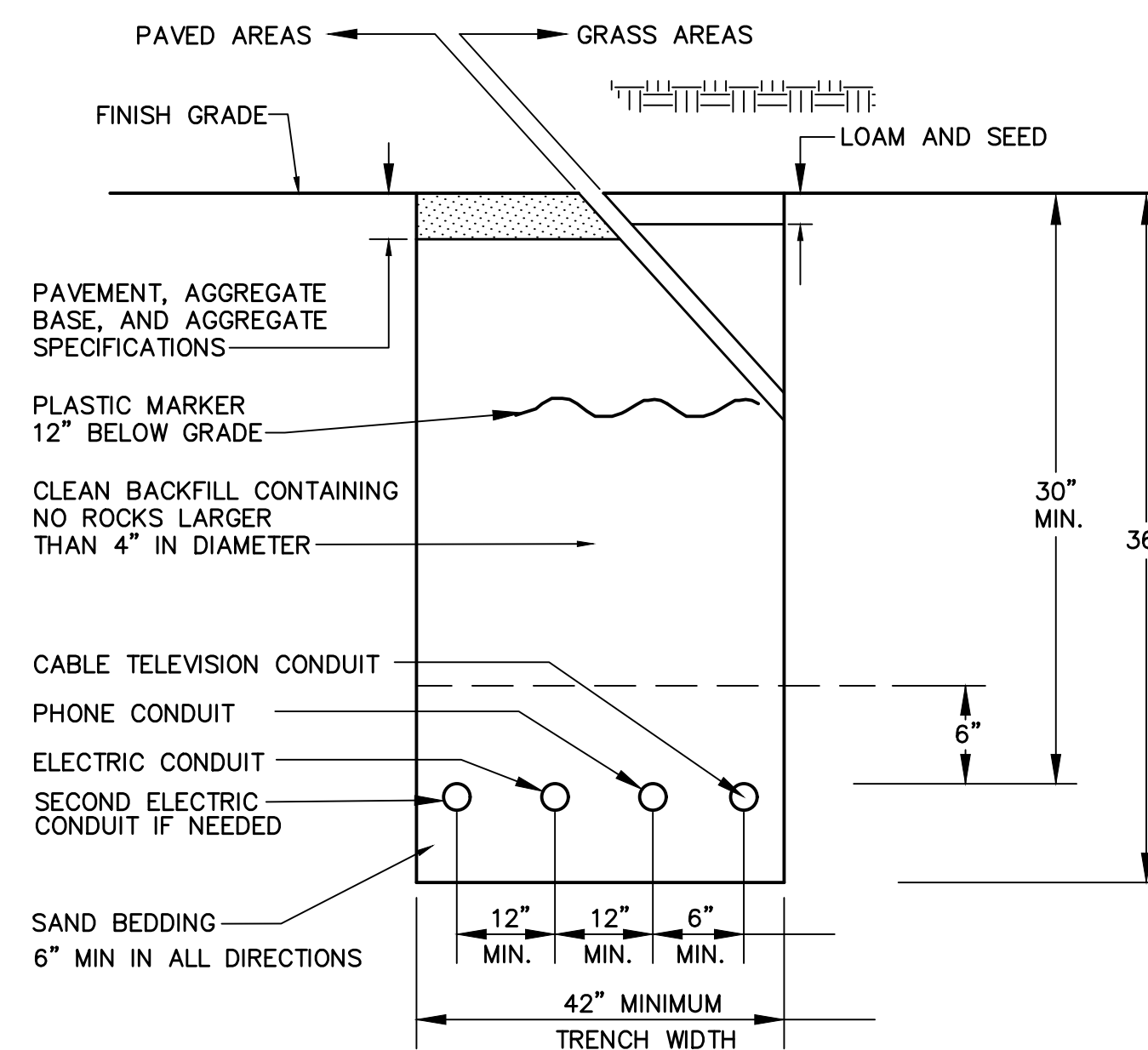
**BIKE RACK DETAIL**  
NOT TO SCALE



**MULCH BERM DETAIL**  
NOT TO SCALE

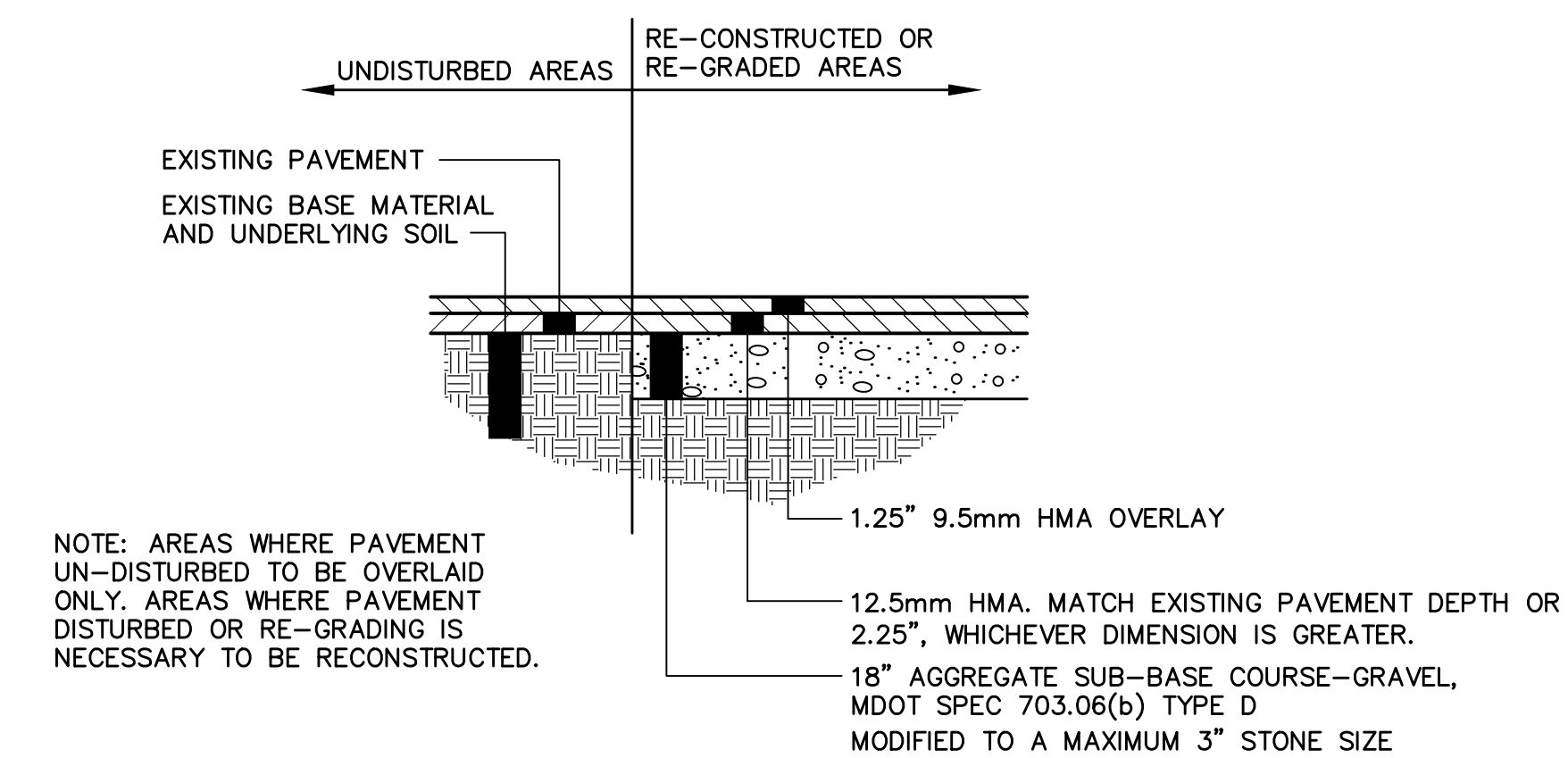


**TYPICAL TRENCH PAVING DETAIL**  
NOT TO SCALE



SEE ELECTRICAL PLANS FOR CONDUIT SIZES

**UNDERGROUND UTILITY TRENCH DETAIL**  
NOT TO SCALE



**TYPICAL PAVEMENT TREATMENTS FOR FIRST LEVEL OF GARAGE**  
NOT TO SCALE

## DETAILS

No.	Revision/Issue	Date
A	PRELIMINARY REVIEW	6-13-17
Design by:	TGN	Checked by: SJB
Drawn by:	TGN	Approved by: SJB
Project:	151.06037	06-06-2017

Sheet No:  
**C6**