

FIRE SPRINKLER PLAN - 2ND FLOOR

SCALE: 1/8"=1'-0"
 AREA PROTECTED: 1020 SQ.FT.
 FINISH FLOOR ELEVATION: 150'
 COLOR CODE: WHITE
 NOTE: AREA PROTECTED AND HEAD COUNT FOR RENOVATED AREA ONLY TO LIMIT OF WORK LINE.

Sprinkler Head Schedule					
Symbol	Count	Thread	K-Factor	Description	Note
⊗	8	1/2"	5.6	EXISTING RELIABLE 165' CHROME RECESSED PENDENT	on Drop
8 = Total Number of Heads this floor					

GENERAL NOTES

SCOPE OF WORK
 RENOVATE EXISTING WET SPRINKLER SYSTEM ON 2ND AND 4TH FLOORS TO ACCOMMODATE NEW FLOOR PLANS. EXISTING SPRINKLER PROTECTION IN ALL OTHER PORTIONS OF THE BUILDING TO REMAIN AS IS.

ALL WIRING TO BE DONE BY OTHERS

ALTHOUGH NOT SPECIFIED, SOME SPRINKLER HEADS HAVE BEEN SHOWN @ CENTERLINE OF TILE. ACTUAL ORIENTATION OF HEADS WITH RESPECT TO CEILING COMPONENTS WILL VARY ACCORDING TO FIELD CONDITIONS.

SPRINKLER SYSTEM INSTALLATION TO COMPLY WITH NFPA PAMPHLET # 13 2010 EDITION.

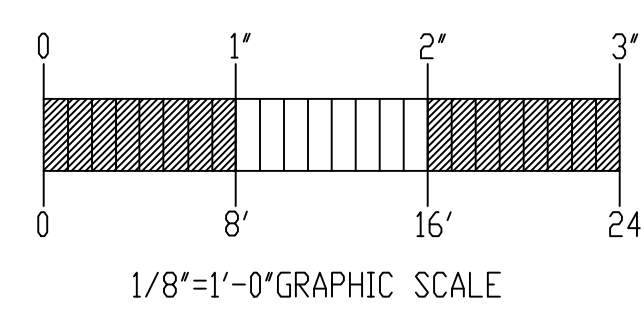
ALL DIMENSIONS ARE SHOWN FOR GENERAL LOCATION OF SPRINKLER HEADS ; PIPING MAY VARY TO SUIT ACTUAL FIELD CONDITIONS.

ACOUSTICAL CEILING TILE (ACT) TO BE LISTED NON-COMBUSTIBLE WITH UL FLAME SPREAD OF LESS THAN 25.

OCCUPANCY DESCRIPTION AND CLASSIFICATION: OFFICE, BATHROOM, AND KITCHEN AREAS LIGHT HAZARD STORAGE AREAS ORDINARY HAZARD GROUP 1 STORAGE OF MATERIAL SHALL NOT EXCEED 8'-0" IN HEIGHT.

○ = INDICATES HYDRAULIC REFERENCE POINTS.
 F.F. ⊕ INDICATES FINISH FLOOR UP TO CENTERLINE OF PIPE.
 F.F. D. INDICATES FINISH FLOOR TO DECK

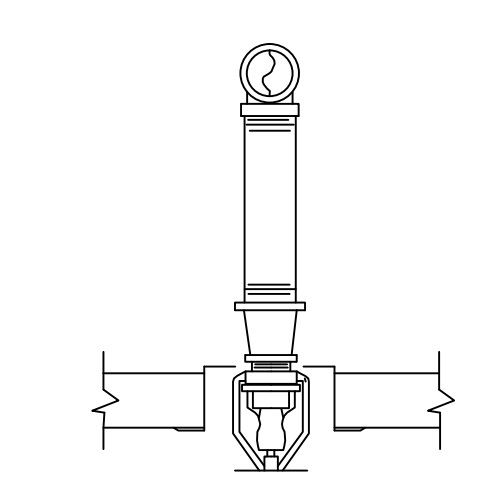
INDICATES NEW SPRINKLER PIPE
 INDICATES EXISTING SPRINKLER PIPE



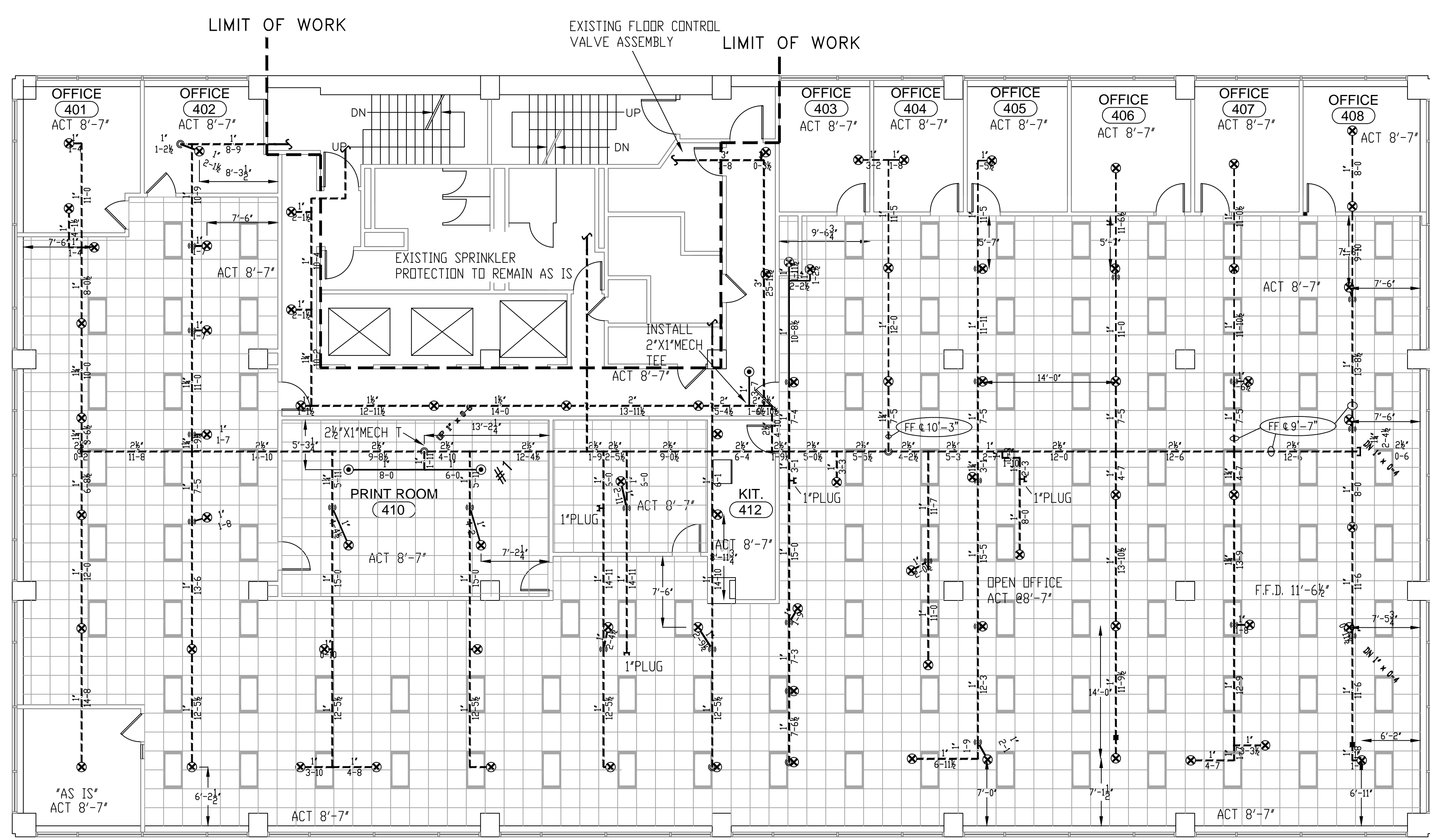
HANGER DETAILS
 NOT TO SCALE

ALL HANGERS TO BE PROVIDED AND INSTALLED AS PER NFPA # 13
 3/8" ROD FOR 1' TO 4' PIPE
 1/2" ROD FOR 5' TO 8' PIPE

NOTE: BEAM CLAMP TO BE ATTACHED TO ANGLE OF STEEL JOIST AND/OR BEAM FLANGES



SPRINKLER HEAD DETAILS
 NOT TO SCALE



FIRE SPRINKLER PLAN - 4TH FLOOR

SCALE: 1/8"=1'-0"
 AREA PROTECTED: 9,646 SQ.FT.
 FINISH FLOOR ELEVATION: 174'-0"
 COLOR CODE: WHITE

NOTE: AREA PROTECTED AND HEAD COUNT FOR RENOVATED AREA ONLY TO LIMIT OF WORK LINE.

Sprinkler Head Schedule					
Symbol	Count	Thread	K-Factor	Description	Note
⊙	3	1/2"	5.6	155' CHROME RECESSED PENDENT TYCO TY-L TY 3211	on Drop
⊗	78	1/2"	5.6	EXISTING RELIABLE 165' CHROME RECESSED PENDENT	on Drop
81 = Total Number of Heads this floor					

GENERAL NOTES SPRINKLER SYSTEM INSTALLATION TO COMPLY WITH NFPA PAMPHLET # 13, 2010 EDITION BRANCH LINE PIPING TO BE BLACK SCHEDULE 40 JOINED BY THREADED DUCTILE IRON FITTINGS MAIN PIPING TO BE SCHEDULE # 10 BLACK WITH GROoved ENDS & WELDED OUTLETS JOINED BY MECHANICAL COUPLINGS OWNER TO PROVIDE SUFFICIENT HEAT THROUGHOUT BUILDING TO PREVENT FREEZING OF WATER FILLED SPRINKLER PIPING AND EQUIPMENT. (40° F)	DATE	REVISIONS	REQUIRED APPROVALS	AMEC 2ND, AND 4TH FLOOR RENOVATIONS 511 CONGRESS ST., PORTLAND, MAINE CONTRACT WITH CBRE BOULDS EASTERN FIRE PROTECTION AUBURN/LEWISTON INDUSTRIAL AIRPARK, AUBURN, MAINE 04210	FIRE SPRINKLER PLANS & DETAILS DWG. NO. 1 OF 1 JOB NUMBER AU-4806-11 SCALE AS NOTED DATE 11/14/11
			OWNER/ARCHITECT STATE FIRE MARSHAL PORTLAND FIRE DEPARTMENT		
			DRAWN BY RJP NICET LEVEL CERT.#		
			CHECKED BY WAF NICET LEVEL III CERT.# 095574 CONTRACTOR LICENSE # 101 CONTRACTOR: RMS # 368		