

**PROJECT**  
**STRATEGIC MEDIA Office Renovation**  
511 Congress Street, 9th Floor  
Portland, Maine 04101

Map: 00 Block: 00 Lot: 00

**CLIENT**  
511 Congress Street, LLC  
c/o CBRE | Boulos Property Management  
1 Canal Plaza, Suite 500  
Portland, ME 04101

**INFORMATION**  
Path: m:\boulos\strategic\  
Issue Date: 12.28.12  
Drawn By: DG  
Checked By: DG



**TITLE**  
**WALL TYPES AND SCHEDULES**

SCALE: 1/4"=1'-0"

©2012 Graham Architects All rights reserved. Information, material, and designs in this document are proprietary to and owned by Graham Architects and may not be disclosed to any third party, reproduced, posted on a global computer information network, or distributed in any way without the written consent from Graham Architects.

**A1.0**

**BUILDING CODE DATA**

**Current Codes Used for Code Information**  
International Building Code 2009  
IBC Maine Amendment 2009  
International Energy Conservation Code 2009  
NFPA 101 2006

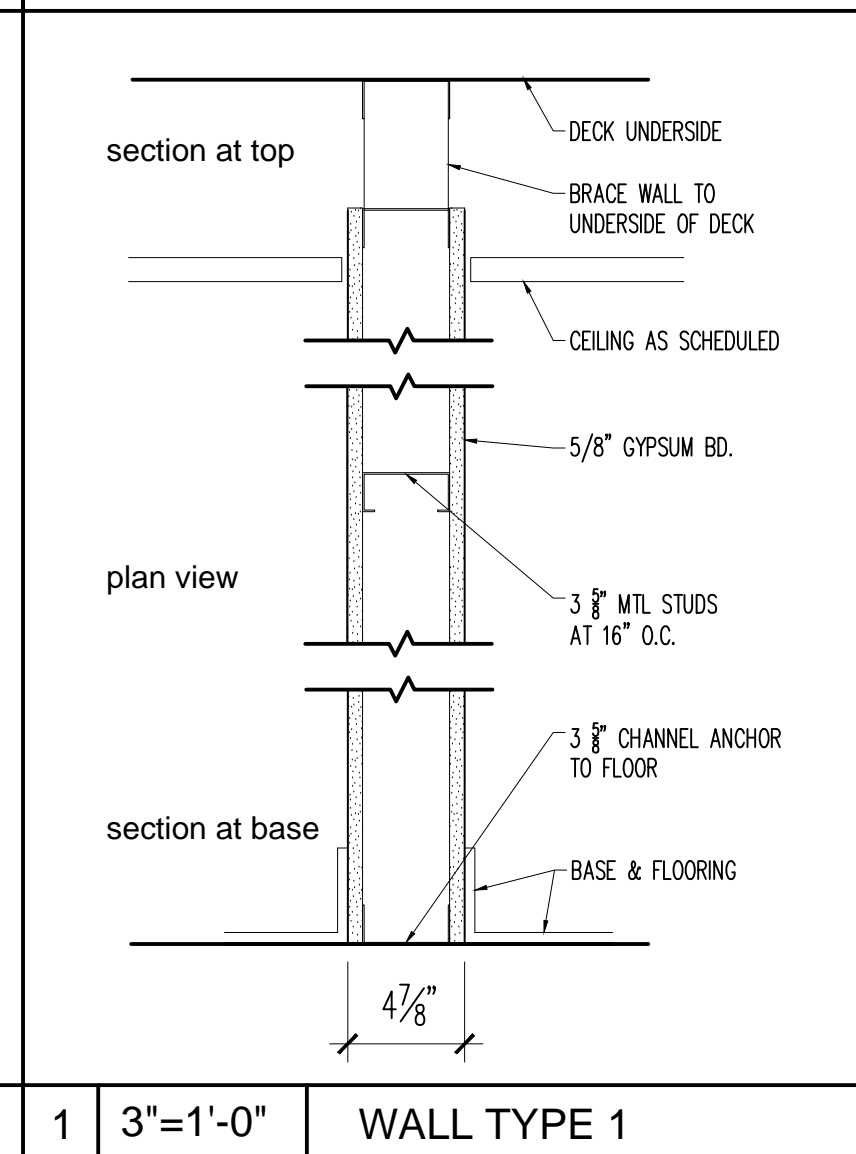
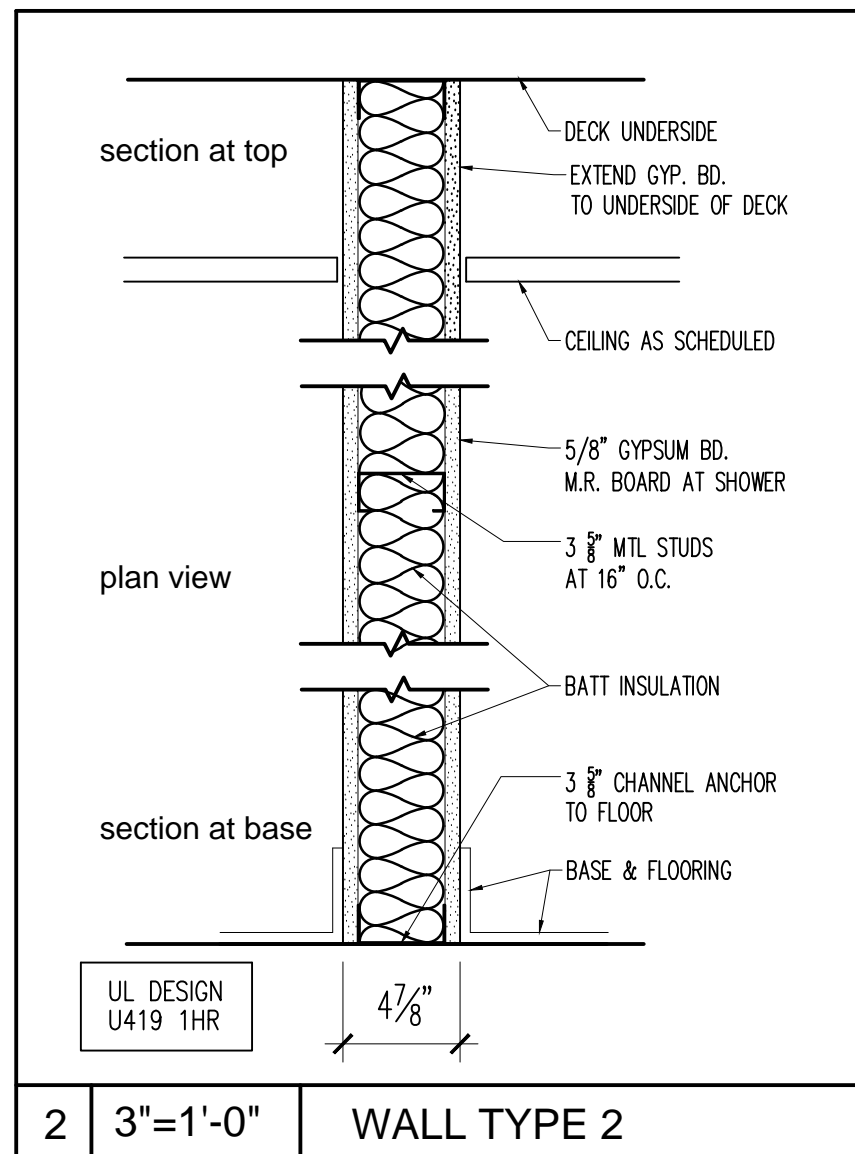
ADA Standards for Accessible Design 2010

OCCUPANCY - BUSINESS GROUP B

OCCUPANT LOAD = 5,380 GROSS S.F. /100 = 54 PPL

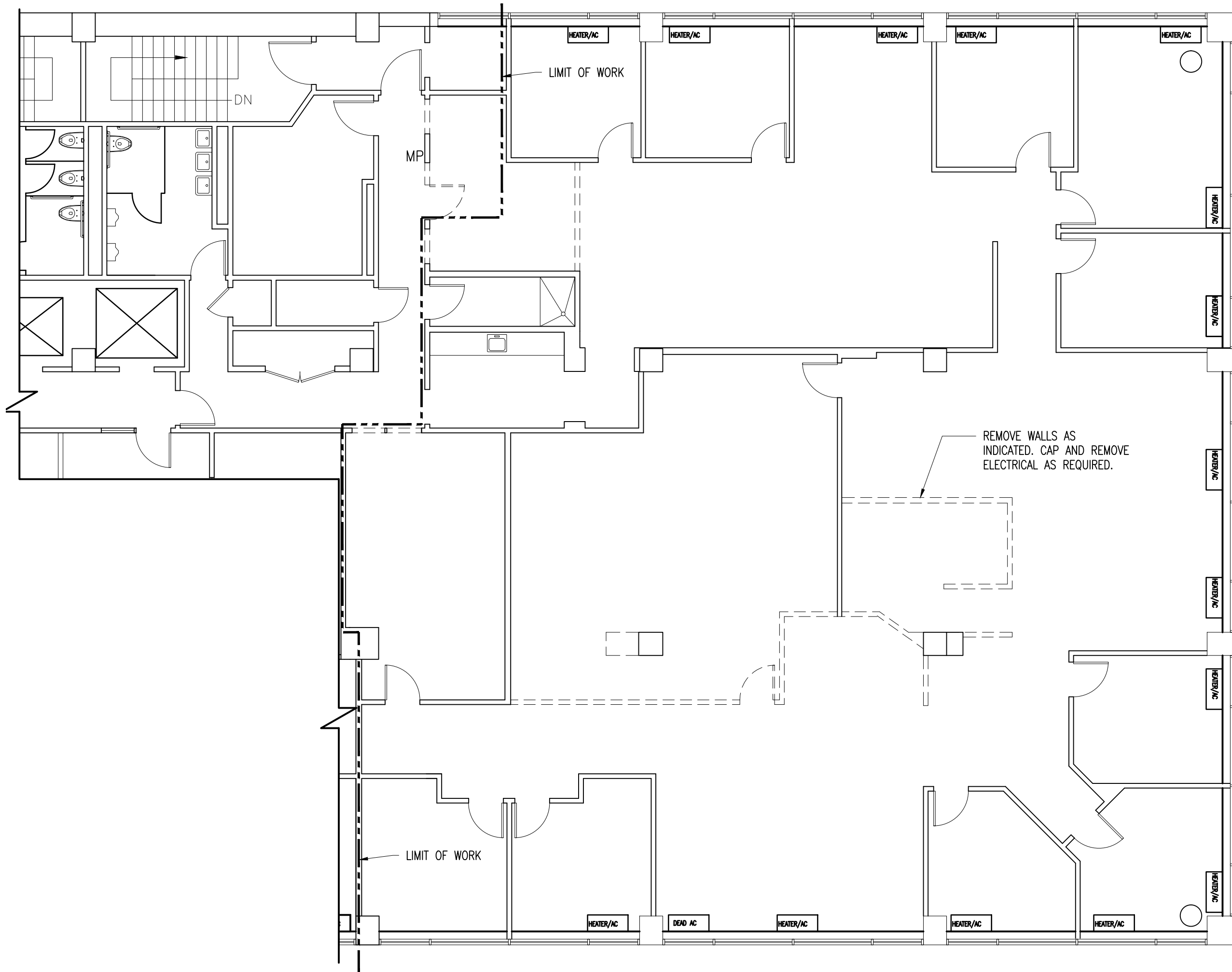
INTERIOR FINISH CLASSIFICATION

EXIT ENCLOSURES - CLASS B  
CORRIDORS - CLASS C  
ROOMS & SPACES - CLASS C



2 3"=1'-0" WALL TYPE 2

1 3"=1'-0" WALL TYPE 1



**PROJECT**  
**STRATEGIC MEDIA**  
**Office Renovation**  
511 Congress Street, 9th Floor  
Portland, Maine 04101

Map: 00 Block: 00 Lot: 00

**CLIENT**  
511 Congress Street, LLC  
c/o CBRE | Boulos Property  
Management  
1 Canal Plaza, Suite 500  
Portland, ME 04101

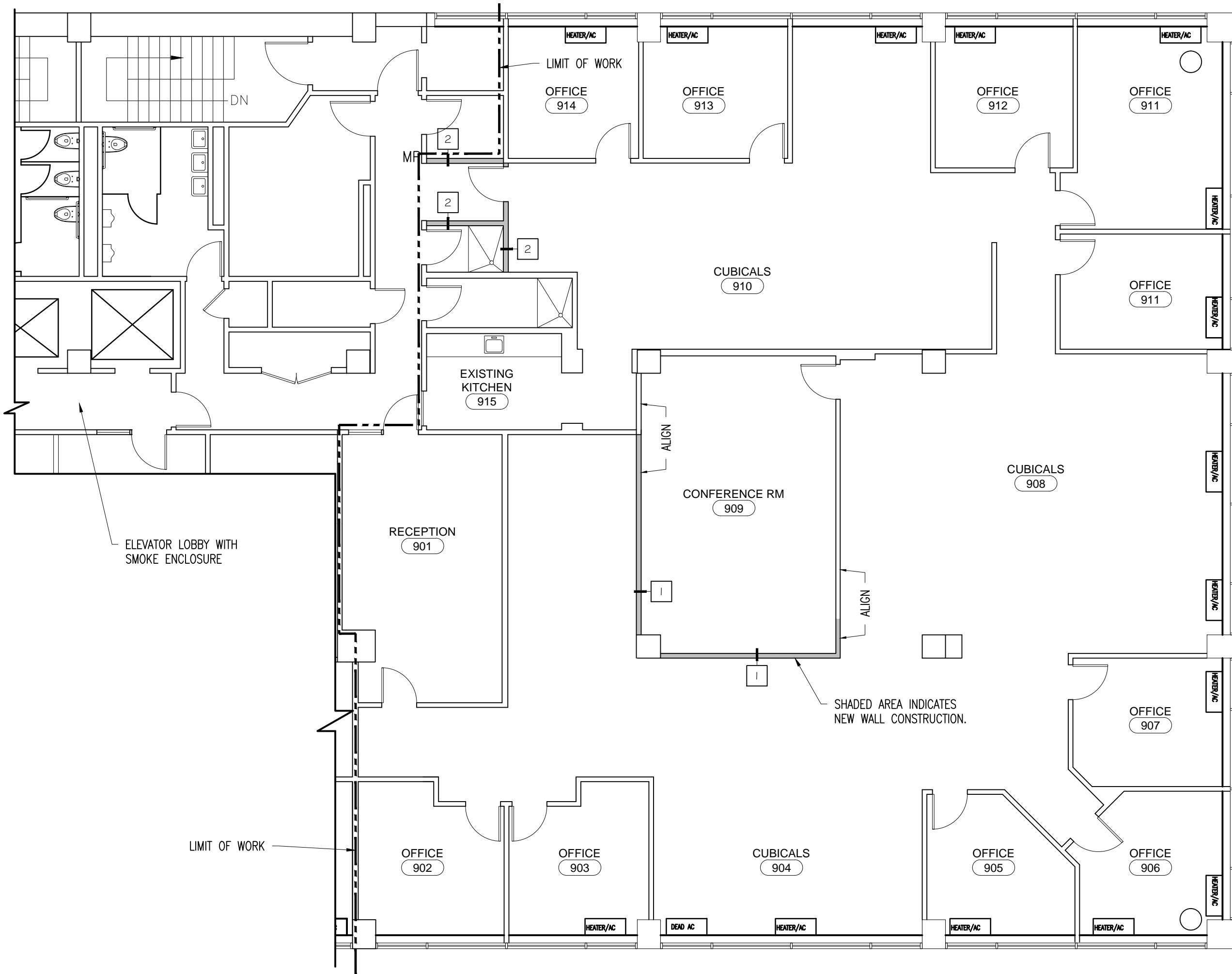
**INFORMATION**  
Path: m:\boulos\strategic\  
Issue Date: 12.28.12  
Drawn By: DG  
Checked By: DG



**TITLE**  
**DEMOLITION PLAN**

SCALE: 1/8" = 1'-0"

©2012 Graham Architects All rights reserved. Information, material, and designs in this document are proprietary to and owned by Graham Architects and may not be disclosed to any third party, reproduced, posted on a global computer information network, or distributed in any way without the written consent from Graham Architects.



**PROJECT**  
**STRATEGIC MEDIA**  
**Office Renovation**  
511 Congress Street, 9th Floor  
Portland, Maine 04101

Map: 00 Block: 00 Lot: 00

**CLIENT**  
511 Congress Street, LLC  
c/o CBRE | Boulos Property  
Management  
1 Canal Plaza, Suite 500  
Portland, ME 04101

**INFORMATION**  
Path: m:\boulos\strategic\  
Issue Date: 12.28.12  
Drawn By: DG  
Checked By: DG



**TITLE**  
**PROPOSED FLOOR PLAN**

SCALE: 1/8"=1'-0"

©2012 Graham Architects All rights reserved. Information, material, and designs in this document are proprietary to and owned by Graham Architects and may not be disclosed to any third party, reproduced, posted on a global computer information network, or distributed in any way without the written consent from Graham Architects.

**PROJECT**  
**STRATEGIC MEDIA**  
**Office Renovation**  
511 Congress Street, 9th Floor  
Portland, Maine 04101

Map: 00 Block: 00 Lot: 00

**CLIENT**  
511 Congress Street, LLC  
c/o CBRE | Boulos Property  
Management  
1 Canal Plaza, Suite 500  
Portland, ME 04101

**INFORMATION**  
Path: m:\boulos\strategic\  
Issue Date: 12.28.12  
Drawn By: DG  
Checked By: DG

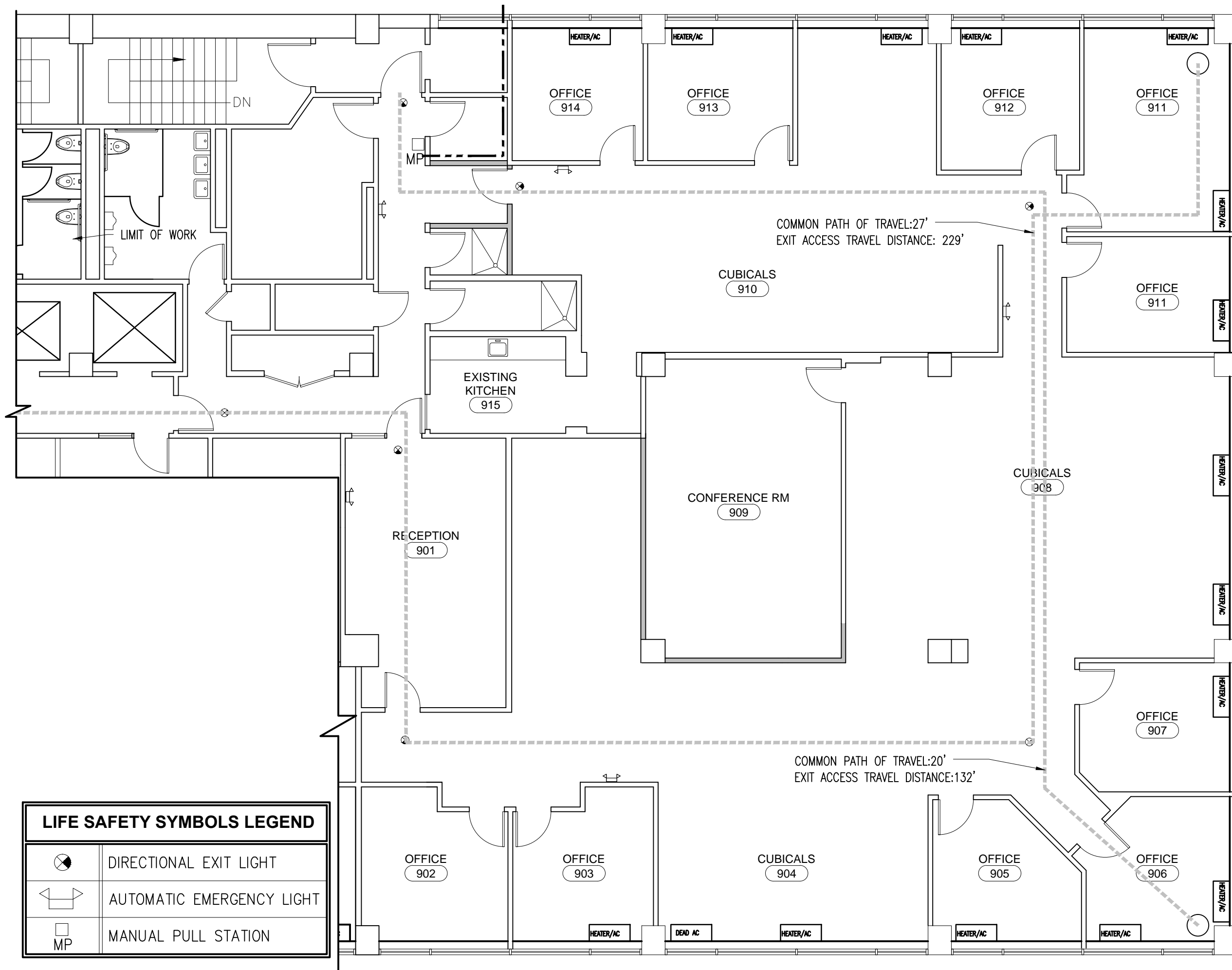



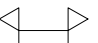

**TITLE**  
**EGRESS PLAN**

SCALE: 1/8"=1'-0"

©2012 Graham Architects All rights reserved. Information, material, and designs in this document are proprietary to and owned by Graham Architects and may not be disclosed to any third party, reproduced, posted on a global computer information network, or distributed in any way without the written consent from Graham Architects.

**FP1.1**



LIFE SAFETY SYMBOLS LEGEND	
	DIRECTIONAL EXIT LIGHT
	AUTOMATIC EMERGENCY LIGHT
	MANUAL PULL STATION