

Revitas OFFICE RENOVATION

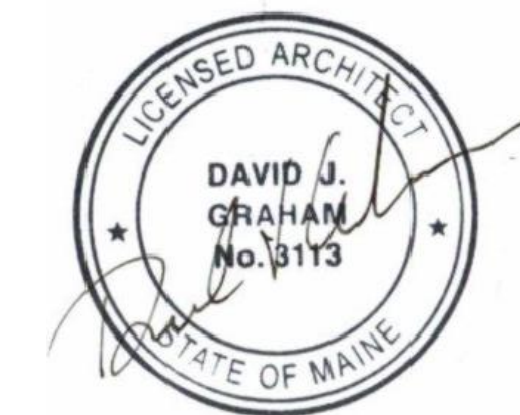
511 CONGRESS STREET
PORTLAND, MAINE



WWW.GRAHAMARCHITECTS.COM

PROJECT
Office Renovation
Revitas
511 Congress Street
Portland, Maine

CLIENT
Revitas
511 Congress Street
Portland, ME 04101



INFORMATION
Path:
Issue Date: 01.17.12
Drawn By: RR
Checked By: DG
Revision:
1.
2.
3.
4.

TITLE
**Project Data
General Notes**

SCALE
AS NOTED

A0.1

ABBREVIATIONS

A	F	M	S
ABV. ABOVE A.F.F. ABOVE FINISHED FLOOR A.D. ACCESS DOOR AC.BD. ACOUSTICAL BOARD AC.CLG. ACOUSTICAL CEILING AC.T. ACOUSTICAL TILE ADJ. ADJUSTABLE AG. AGGREGATE ALT. ALTERNATE AL. ALUMINUM ANCH. ANCHOR A.B. ANCHOR BOLT ANOD. ANODIZED ARCH. ARCHITECT ASPH. ASPHALT ASSY. ASSEMBLY	FAB. FABRICATE FAS. FASTEN F.GL. FINISH GLASS FIN. FINISH F.F. FINISH FLOOR F.E. FIRE EXTINGUISHER F.E.C. FIRE EXTINGUISHER F.H.C. FIRE HOSE CABINET F.H.R. FIRE HOSE RACK F.PRF. FIRE PROOFING FLG. FLASHING F.H.S. FLAT HEAD SCREW FL. FLOOR F.D. FLOOR DRAIN FL.MTD. FLOOR MOUNTED FOOT FND. FOUNDATION FUT. FUTURE	MFR. MANUFACTURER MRB. MARBLE MAS. MASONRY M.O. MASONRY OPENING MAX. MAXIMUM MEMB. MEMBRANE MTL. METAL MTL. DK. METAL DECK MTL. L. METAL LATH M. METER MEZZ. MEZZANINE MM. MILLIMETER MLWK. MILLWORK MIN. MINIMUM MISC. MISCELLANEOUS MOD. MODULE M.D.G. MOUNTING MTG. MOUNTING MULL. MULLION	SAF. GL. SAFETY GLASS S.N.D. SANITARY NAPKIN DISPENSER SCHED. SCHEDULE SLNT. SEALANT SMLS. SEAMLESS SECT. SECTION SEP. SEPARATE SERV. SERVICE S.S. SERVICE SINK SHWR. SHOWER SH. SHEET SIM. SIMILAR S.C. SOLID CORE SPL. SPECIAL SPEC. SPECIFICATION SQ. SQUARE S. STL. STAINLESS STEEL STD. STANDARD STL. STEEL S.D. STORM DRAIN STRUC. STRUCTURAL SURF. SURFACE SUSP. SUSPENDED CEILING
B	G	N	T
BSMT. BASEMENT BM. BEAM B.M. BENCH MARK BTWN. BETWEEN BIT. BITUMINOUS BLK. BLOCK BLKG. BLOCKING BK. BRICK BLDG. BUILDING B.U.R. BUILT-UP ROOFING	GAL. GALLON CALV. GALVANIZED GA. GAUGE GL. GLASS GR. GRADE GRAN. GRANITE GYP. BD. GYPSUM BOARD GYP. PLASTER/PLASTER	NAT. NATURAL NOM. NOMINAL N.I.C. NOT IN CONTRACT N.T.S. NOT TO SCALE NO. NUMBER	TEL. TELEPHONE TEMP. TEMPERED T.C. TERRA COTTA TERR. TERRAZZO THK. THICKNESS THD. THREAD THRESH. THRESHOLD T.ACC. TOILET ACCESSORY T.P.D. TOILET PAPER DISPENSER T.O.C. TOP OF CURB T.O.SL. TOP OF SLAB T.O.STL. TOP OF STEEL T.B. TOWEL BAR TRAV. TRAVERTINE T. TREAD TYP. TYPICAL T.LT. TOILET
C	H	O	U
CAB. CABINET CPT. CARPET C.I.P. CAST-IN PLACE C.I. CAST IRON C.LG. CEILING CEM. CEMENT CTR. CENTER C.L. CENTER LINE CER. CERAMIC C.T. CERAMIC TILE CLO. CLOSET COL. COLUMN CONC. CONCRETE C.M.U. CONCRETE MASONRY UNIT CONSTR. CONSTRUCTION C.J.T. CONTROL JOINT CONT. CONTINUOUS CSK. COUNTERSUNK CU.FT. CUBIC FOOT	HDW. HARDWARE HD. HEAD HT. HEIGHT H.P.T. HIGH POINT H.C. HOLLOW CORE H.M. HOLLOW METAL H.B. HOSE BIBB HR. HOUR	O.C. ON CENTER OPNG. OPENING OPP. OPPOSITE OP.HD. OPPOSITE HAND O.D. OUTSIDE DIAMETER O.A. OVERALL OVHD. OVERHEAD OZ. OUNCE OXY. OXYGEN	U.C. UNDERCUT U.L. UNDERWRITERS LABORATORIES INC. UR. URINAL U.N.O. UNLESS NOTED OTHERWISE
D	J	P	V
DP. DAMPROOFING DET. DETAIL DIA. DIAMETER DIM. DIMENSION DR. DOOR DN. DOWN DWG. DRAWING D.F. DRINKING FOUNTAIN DR.W. DRAINWALL D. DEPTH	JT. JOINT JST. JOIST	PTD. PAINTED PR. PAIR PNT. PAINT PNL. PANEL P.T.D. PAPER TOWEL DISPENSER PART. BD. PARTIAL BOARD PART. PARTITION PC. PIECE PLAS. PLASTER PL. PLASTIC PL. LAM. PLASTIC LAMINATE PLT. PLATE P.W. PLYWOOD PT. POINT POL. POLISHED LB. POUND PVC. POLYVINYL CHLORIDE P.C. PLUS/PORTLAND CEMENT PT. PLASTER PRCST. PRECAST PROP. PROPERTY P.S.I. POUND PER SQUARE INCH	VAC. VACUUM V.B. VAPOR BARRIER VAR. VARIES VERT. VERTICAL V.W.C. VINYL WALL COVERING V.C.T. VINYL COMPOSITION TILE VNER. VENEER
E	L	Q	W
EA. EACH ELAS. ELASTIC E.D.F. ELECTRIC DRINKING FOUNTAIN EL. ELEVATION ELEV. ELEVATOR ENCL. ENCLOSURE EO. EQUAL EQUIP. EQUIPMENT EXH. EXHAUST EXIST. EXISTING EXP. EXPANSION EXP.ANCH. EXPANSION ANCHOR EXP.BLT. EXPANSION BOLT EXP.JT. EXPANSION JOINT EXT. EXTERIOR	LBL. LABEL L.B. LAG BOLT LAM. LAMINATE LAV. LAVATORY LT. LIGHT LT. WT. LIGHT WEIGHT L.W.C. LIGHT WEIGHT CONCRETE LMS. LIMESTONE L.F. LINEAR FEET LNTL. LINTEL L.G. LONG LVR. LOUVER L.P.T. LOW POINT L. LENGTH	QTY. QUANTITY Q.T. QUARRY TILE	W.T.W. WALL TO WALL W.H. WALL HUNG W.C. WATER CLOSET WP. WATER PROOFING WND. WINDOW W.W.F. WELDED WIRE FABRIC WD. WOOD W.P. WORK POINT W.I. WROUGHT IRON W/O. WITHOUT W/ WITH W. WIDTH
R	Y		
RAB. RABBET RAD. RADIUS RE. REFER, REFERENCE R.D. ROOF DRAIN RFL. ROOFING REFL. REFLECTED REINF. REINFORCE REQD. REQUIRED R.A. RETURN AIR REV. REVISE R.O.W. RIGHT OF WAY R. RISER R.M. ROOM R.G. ROUGH OPENING RUB. RUBBER	YD. YARD		

SYMBOLS

ACOUSTICAL TILE	MARBLE, TRAVERTINE
ALUMINUM	PLASTER
BRASS, BRONZE	PLYWOOD
BRICK	STEEL
CONCRETE	STONE, GRANITE
CONCRETE MASONRY UNITS	TERRAZZO
EARTH	TILE CERAMIC OR QUARRY
GLASS	WOOD BLOCKING OR SHIMS
GYPSUM WALL BOARD	WOOD- FINISHED
INSULATION BATT OR BLANKET	WOOD- ROUGH
INSULATION- RIGID	

REFERENCE

GLAZING TYPE	(A)
ROOM/SPACE NUMBER	OFFICE 114
EQUIPMENT NUMBER	X-690
REVISION	(2)
REVISION CLOUD	(2)
EXTERIOR ELEVATION	4 A5.2
INTERIOR ELEVATION	3/A7.1
TEST BORING	TB-1
NEW OR REQUIRED POINT ELEVATION	+461.00
EXISTING POINT ELEVATION	+461.00
NEW CONTOURS (ELEV. NOTED ON HIGH SIDE)	320
EXISTING CONTOURS (ELEV. NOTED ON HIGH SIDE)	318
FLOOR LINES IN EXTERIOR ELEVATION	
BREAK LINE	
PROPERTY LINES, BOUNDRY LINES	
MATCH LINE	
REFERENCE OR LEVEL LINE	
COLUMN REFERENCE GRIDS	B
TOILET ACCESSORY	3 A6.1
SECTION/DETAIL WITH SHEET REFERENCE	3/A7.2
BUILDING SECTION	3 A6.1
PARTITION TYPE	6/A4.2
ENLARGED PLAN REFERENCE	2/A10.2
ENLARGED DETAIL REFERENCE	
NORTH ARROW	TRUE NORTH
PROJECT NORTH ARROW	
DOOR DESIGNATION	3
FINISH SCHEDULE	WALL FINISH W-1 BASE W-2 F-2 FLOOR

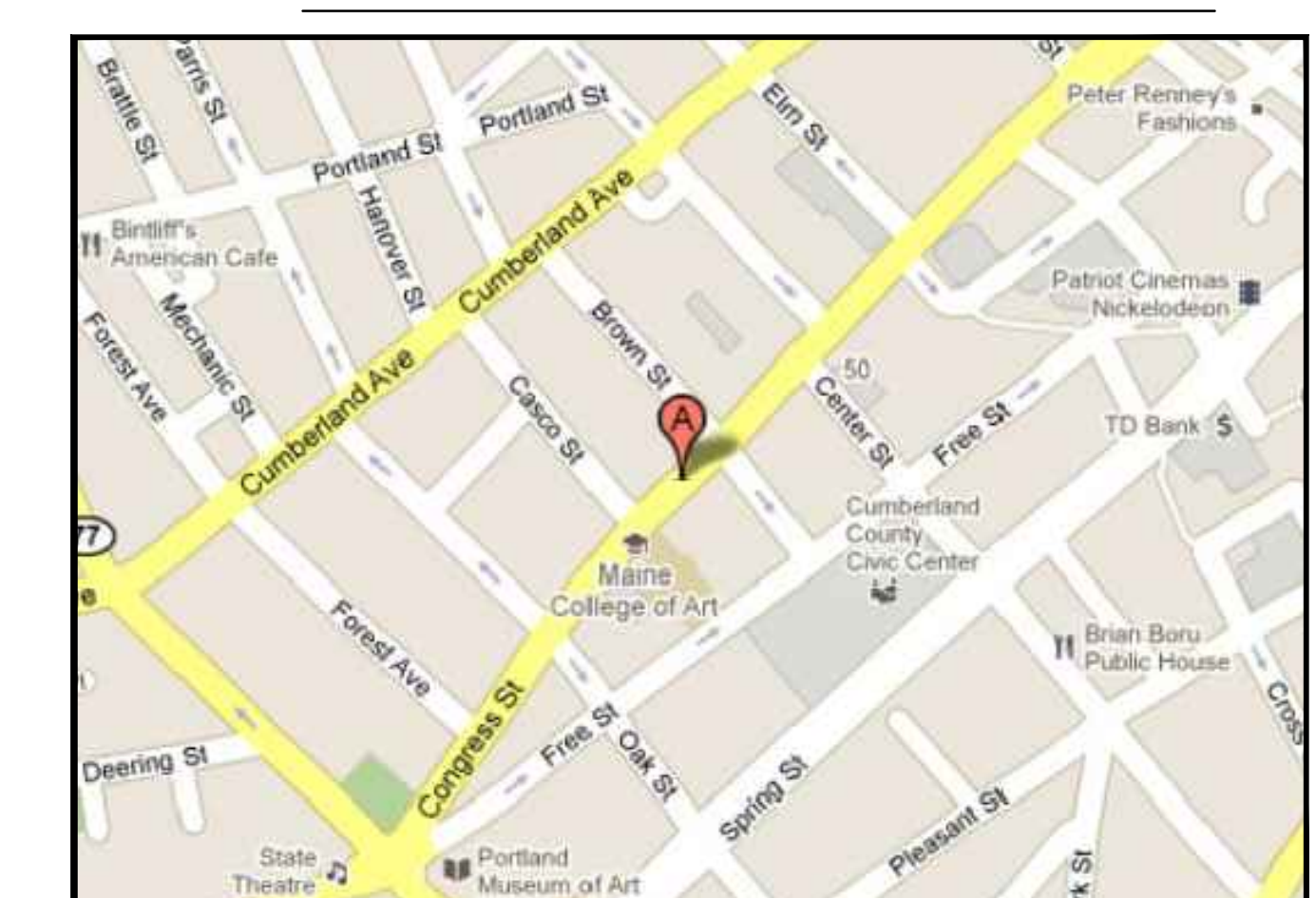
INDEX

A0.1	COVER/LEGEND SHEET
EX1.1	EXISTING FLOOR PLAN
D1.1	DEMOLITION PLAN
A1.1	FLOOR PLAN
A1.2	FINISHES PLAN
A2.1	REFLECTED CEILING PLAN
A2.2	MISC CEILING DETAILS
A4.1	INTERIOR ELEVATIONS
A6.1	PARTITION TYPES & SCHEDULES

PROJECT DATA

CODE: INTERNATIONAL BUILDING CODE
EDITION: 2009
AMENDMENTS
PROJECT NAME: MANY Office Renovation
PROJECT ADDRESS: 511 Congress Street, Portland, ME
MAP AND LOT: -
ZONING CLASSIFICATION: B4-Commercial Business
OCCUPANCY TYPE: B
NUMBER OF STORIES: -

PROJECT LOCATION



ARCHITECTURAL ONLY

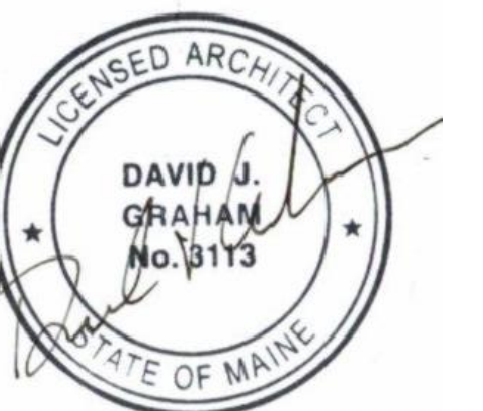
NOTE: LIFE SAFETY, ELECTRICAL & HVAC LAYOUT DIAGRAMS CONTAINED IN THESE DOCUMENTS ARE FOR DESIGN INTENT AND THE COORDINATION WITH PROPOSED BUILDING LAYOUT AND FF&E ITEMS. ELECTRICAL & HVAC SUBCONTRACTOR SHALL BE RESPONSIBLE FOR PERMIT DOCUMENTS OR ENGINEERING REQUIRED AND SHALL COORDINATE FINAL LOCATIONS WITH ARCHITECT, OWNER, CONSTRUCTION MANAGER, AND LOCAL CODE ENFORCEMENT OFFICIAL PRIOR TO COMPLETION OF ROUGH-IN.

PROJECT

Office Renovation
Revitas
 511 Congress Street
 Portland, Maine

CLIENT

Revitas
 511 Congress Street
 Portland, ME 04101



INFORMATION

Path:
 Issue Date: 01.17.12
 Drawn By: RR
 Checked By: DG
 Revision:
 1.
 2.
 3.
 4.

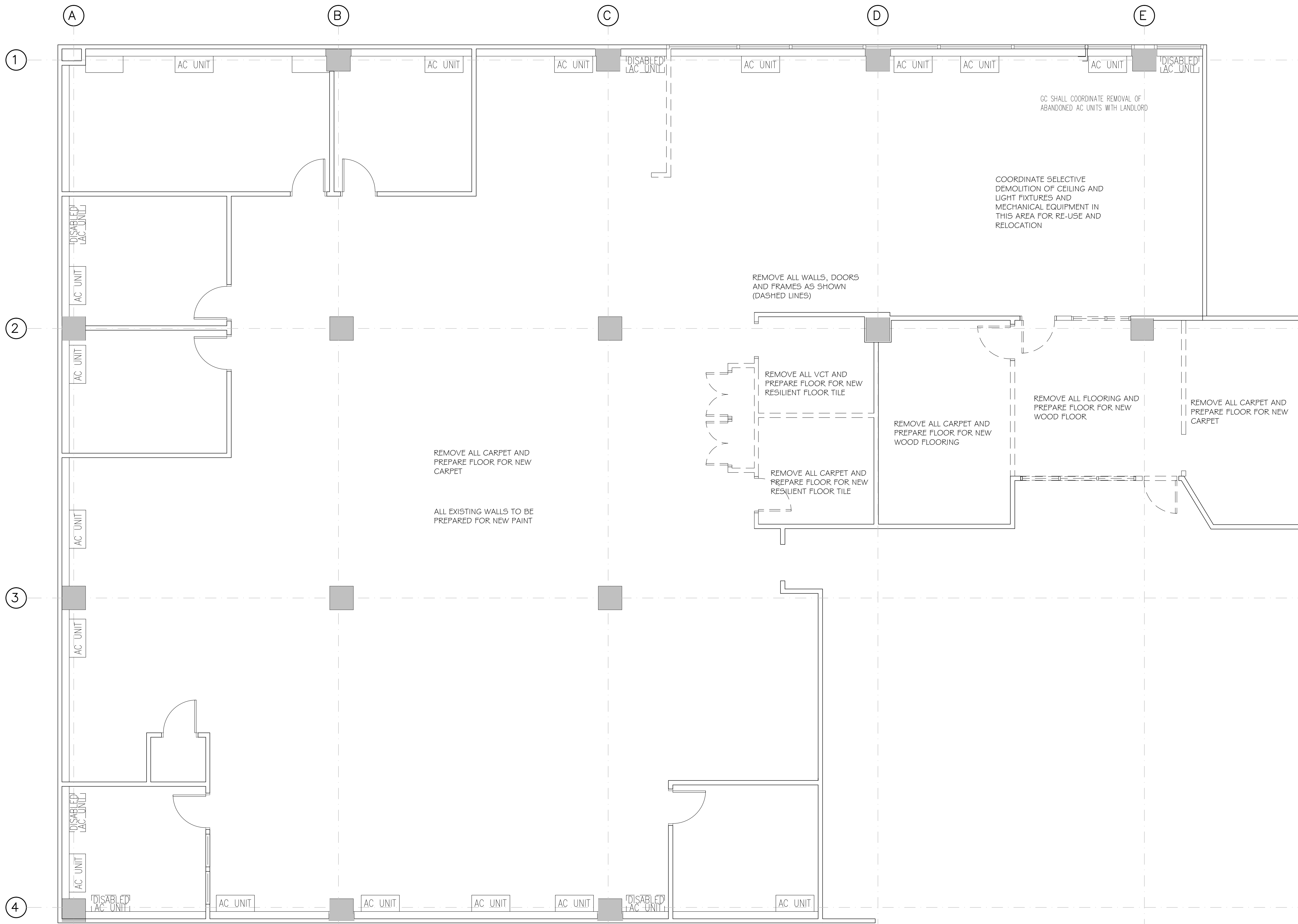
TITLE

**Existing Conditions
 6th Floor**

SCALE
 AS NOTED



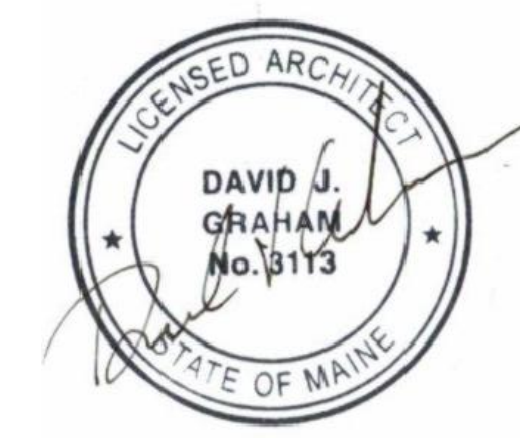
1 Existing Conditions Plan - 6th Floor
 Scale: 1/4" = 1'-0"



WWW.GRAHAMARCHITECTS.COM

PROJECT
Office Renovation
Revitas
511 Congress Street
Portland, Maine

CLIENT
Revitas
511 Congress Street
Portland, ME 04101



INFORMATION

Path:
Issue Date: 01.17.12
Drawn By: RR
Checked By: DG
Revision:
1.
2.
3.
4.

TITLE
Demolition Floor Plan
6th Floor

SCALE
AS NOTED

1 Demolition Plan - 6th Floor
Scale: 1/4" = 1'-0"

D1.1



WWW.GRAHAMARCHITECTS.COM

PROJECT
 Office Renovation
Revitas
 511 Congress Street
 Portland, Maine

CLIENT
 Revitas
 511 Congress Street
 Portland, ME 04101



INFORMATION
 Path:
 Issue Date: 01.17.12
 Drawn By: RR
 Checked By: DG
 Revision:
 1.
 2.
 3.
 4.

TITLE
Floor Plan
6th Floor

SCALE
 AS NOTED

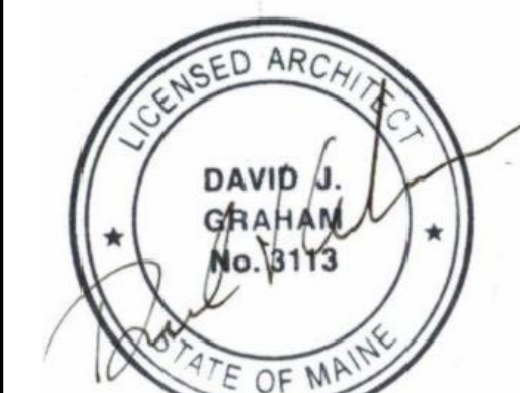
1 Floor Plan - 6th Floor
 Scale: 1/4" = 1'-0"

PROJECT

Office Renovation
Revitas
 511 Congress Street
 Portland, Maine

CLIENT

Revitas
 511 Congress Street
 Portland, ME 04101



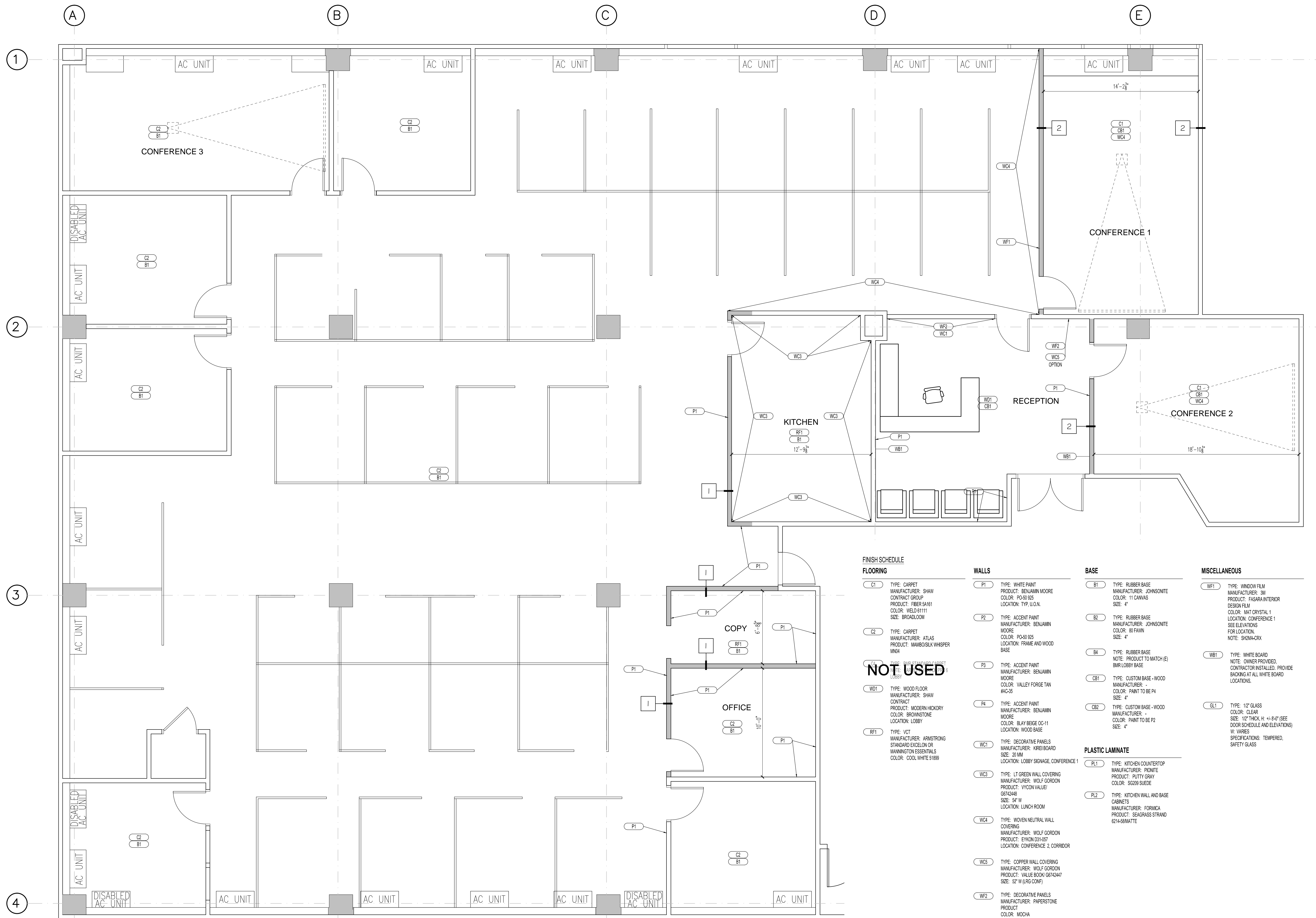
INFORMATION

Path:
 Issue Date: 01.17.12
 Drawn By: RR
 Checked By: DG
 Revision:
 1.
 2.
 3.
 4.

TITLE

Finish Plan
 6th Floor

SCALE
 AS NOTED



FINISH SCHEDULE

FLOORING

- C1 TYPE: CARPET
 MANUFACTURER: SHAW
 CONTRACT GROUP
 PRODUCT: FIBER 5A161
 COLOR: WELD 6111
 SIZE: BROWN/COM
- C2 TYPE: CARPET
 MANUFACTURER: ATLAS
 PRODUCT: MAMBO/SILK WHISPER
 MNA
- WD1 TYPE: WOOD FLOOR
 MANUFACTURER: SHAW
 CONTRACT
 PRODUCT: MODERN HICKORY
 COLOR: BROWNSTONE
 LOCATION: LOBBY
- RF1 TYPE: VCT
 MANUFACTURER: ARMSTRONG
 STANDARD EXCELON OR
 MANNINGTON ESSENTIALS
 COLOR: COOL WHITE 51899

NOT USED

WALLS

- P1 TYPE: WHITE PAINT
 MANUFACTURER: BENJAMIN MOORE
 COLOR: PO-S0 925
 LOCATION: TYP. U.O.N.
- P2 TYPE: ACCENT PAINT
 MANUFACTURER: BENJAMIN MOORE
 COLOR: PO-S0 925
 LOCATION: FRAME AND WOOD BASE
- P3 TYPE: ACCENT PAINT
 MANUFACTURER: BENJAMIN MOORE
 COLOR: VALLEY FORGE TAN #HC35
- P4 TYPE: ACCENT PAINT
 MANUFACTURER: BENJAMIN MOORE
 COLOR: BLAY BEIGE OC-11
 LOCATION: WOOD BASE
- WC1 TYPE: DECORATIVE PANELS
 MANUFACTURER: KREBBOARD
 SIZE: 20 MM
 LOCATION: LOBBY SIGNAGE, CONFERENCE 1
- WC3 TYPE: LT GREEN WALL COVERING
 MANUFACTURER: WOLF GORDON
 PRODUCT: VYCON VALVE/ 6674248
 SIZE: 54" W
 LOCATION: LUNCH ROOM
- WC4 TYPE: WOVEN NEUTRAL WALL COVERING
 MANUFACTURER: WOLF GORDON
 PRODUCT: ENKON D11-657
 LOCATION: CONFERENCE 2, CORRIDOR
- WC5 TYPE: COPPER WALL COVERING
 MANUFACTURER: WOLF GORDON
 PRODUCT: VALUE BOOK/ 6674247
 SIZE: 52" W (LARG COMP)
- WF2 TYPE: DECORATIVE PANELS
 MANUFACTURER: PAPERSTONE
 PRODUCT: MOCHA
 SIZE: 10 MM
 LOCATION: LOBBY SIGNAGE

BASE

- B1 TYPE: RUBBER BASE
 MANUFACTURER: JOHNSONITE
 COLOR: 11 CANVAS
 SIZE: 4"
- B2 TYPE: RUBBER BASE
 MANUFACTURER: JOHNSONITE
 COLOR: 80 FAWN
 SIZE: 4"
- B4 TYPE: RUBBER BASE
 NOTE: PRODUCT TO MATCH (E)
 BMR LOBBY BASE
- CB1 TYPE: CUSTOM BASE - WOOD
 MANUFACTURER: -
 COLOR: PAINT TO BE P4
 SIZE: 4"
- CB2 TYPE: CUSTOM BASE - WOOD
 MANUFACTURER: -
 COLOR: PAINT TO BE P2
 SIZE: 4"

PLASTIC LAMINATE

- PL1 TYPE: KITCHEN COUNTERTOP
 MANUFACTURER: PIONITE
 PRODUCT: PUTTY GRAY
 COLOR: SG269 SUEDE
- PL2 TYPE: KITCHEN WALL AND BASE CABINETS
 MANUFACTURER: FORMICA
 PRODUCT: SEAGRASS STRAND 624-SMATTIE

MISCELLANEOUS

- WF1 TYPE: WINDOW FILM
 MANUFACTURER: 3M
 PRODUCT: FASARA INTERIOR DESIGN FILM
 COLOR: MAT CRYSTAL 1
 LOCATION: CONFERENCE 1
 SEE ELEVATIONS FOR LOCATION.
 NOTE: SH2MA-CRX
- WB1 TYPE: WHITE BOARD
 NOTE: OWNER PROVIDED,
 CONTRACTOR INSTALLED. PROVIDE
 BACKING AT ALL WHITE BOARD
 LOCATIONS.
- GL1 TYPE: 1/2" GLASS
 COLOR: CLEAR
 SIZE: 1/2" THICK, H: 4'-8-0" (SEE
 DOOR SCHEDULE AND ELEVATIONS)
 W/ WARES
 SPECIFICATIONS: TEMPERED,
 SAFETY GLASS

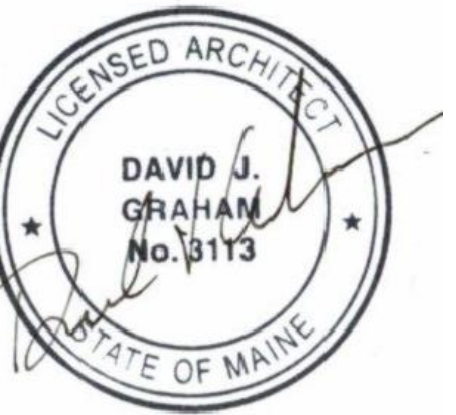
1 Floor Finish Plan - 6th Floor
 Scale: 1/4" = 1'-0"

PROJECT

Office Renovation
Revitas
 511 Congress Street
 Portland, Maine

CLIENT

Revitas
 511 Congress Street
 Portland, ME 04101



INFORMATION

Path:
 Issue Date: 01.17.12
 Drawn By: RR
 Checked By: DG
 Revision:
 1.
 2.
 3.
 4.

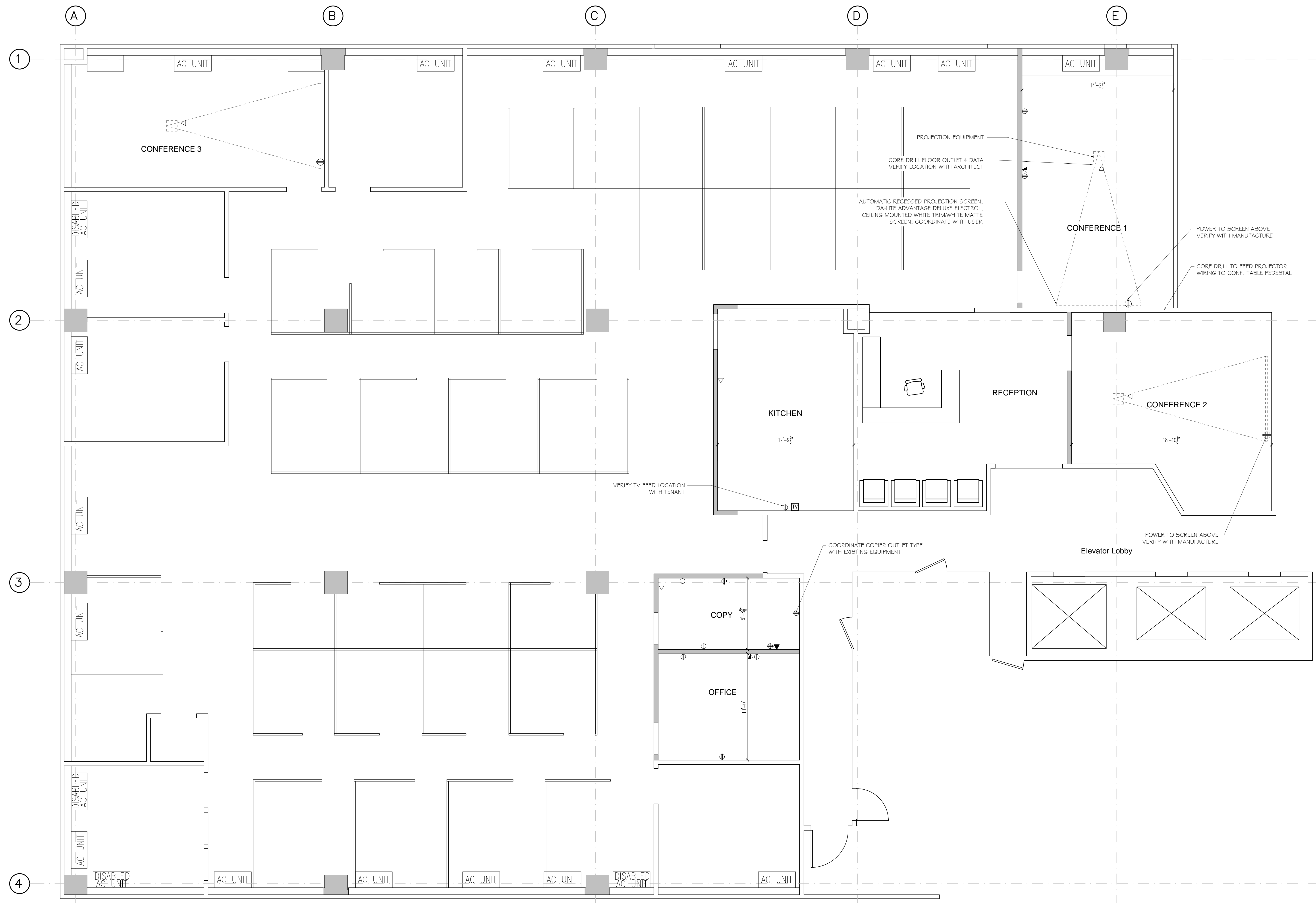
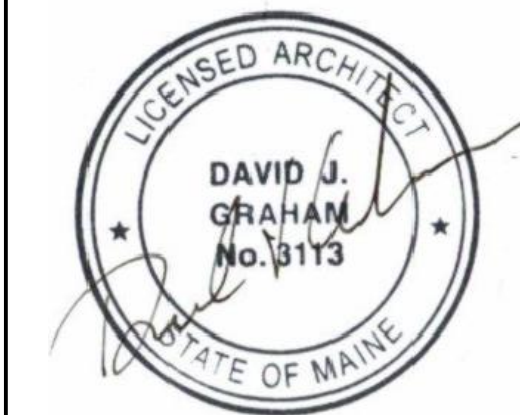
TITLE

**Furniture Plan
 6th Floor**

SCALE
 AS NOTED



1 6th Floor- Existing Furniture Plan
 Scale: 1/4" = 1'-0"



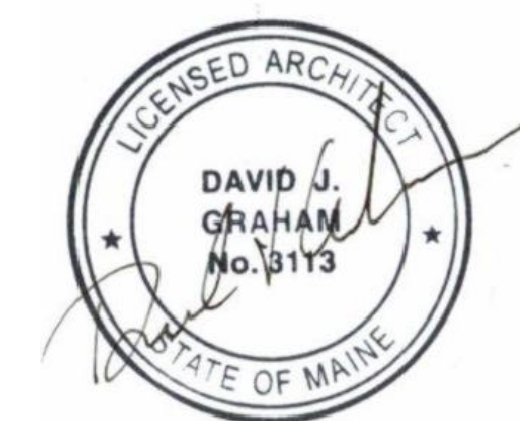
1 Reflected Ceiling Plan - 6th Floor
Scale: 1/4" = 1'-0"

PROJECT

Office Renovation
Revitas
511 Congress Street
Portland, Maine

CLIENT

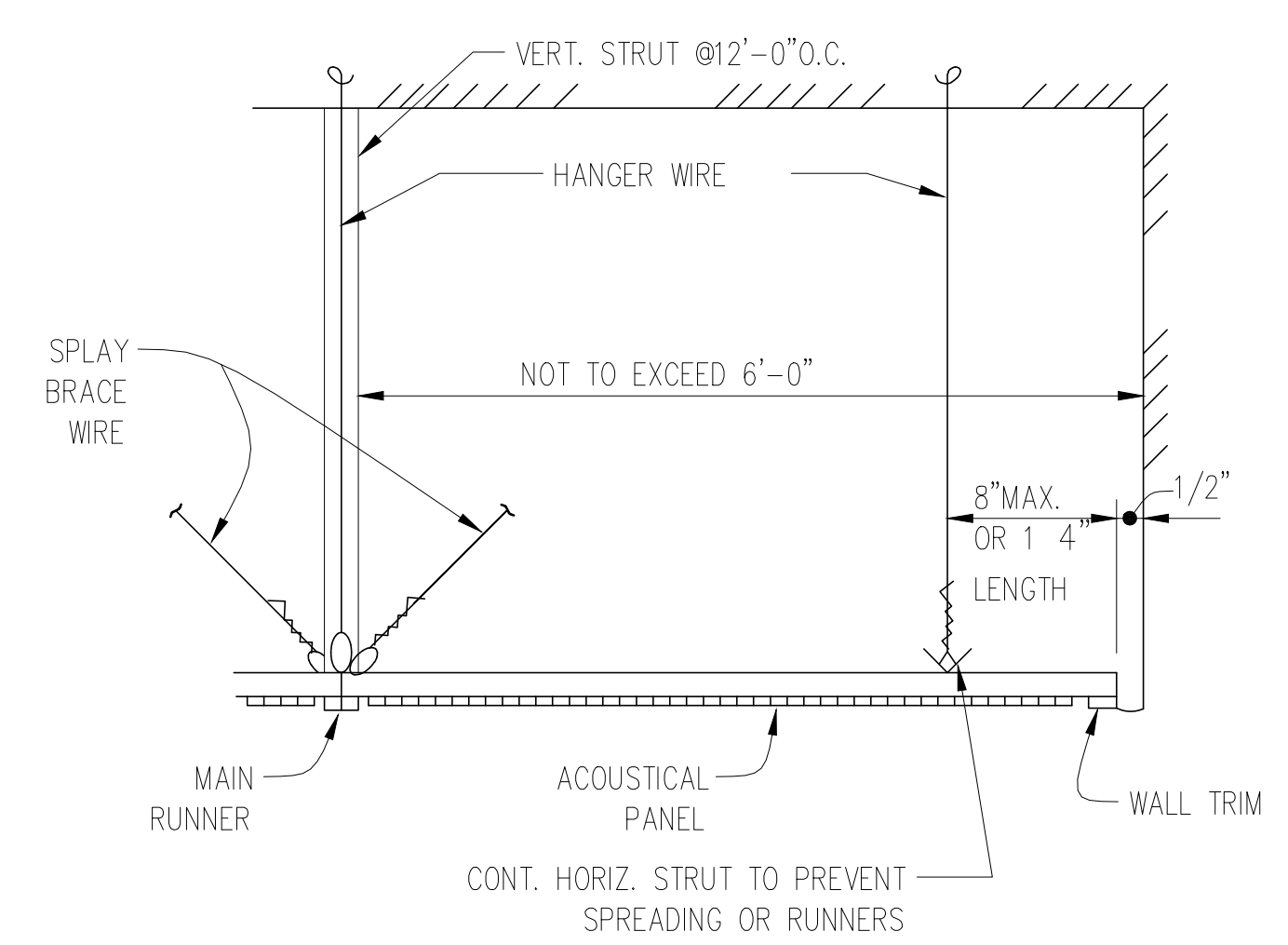
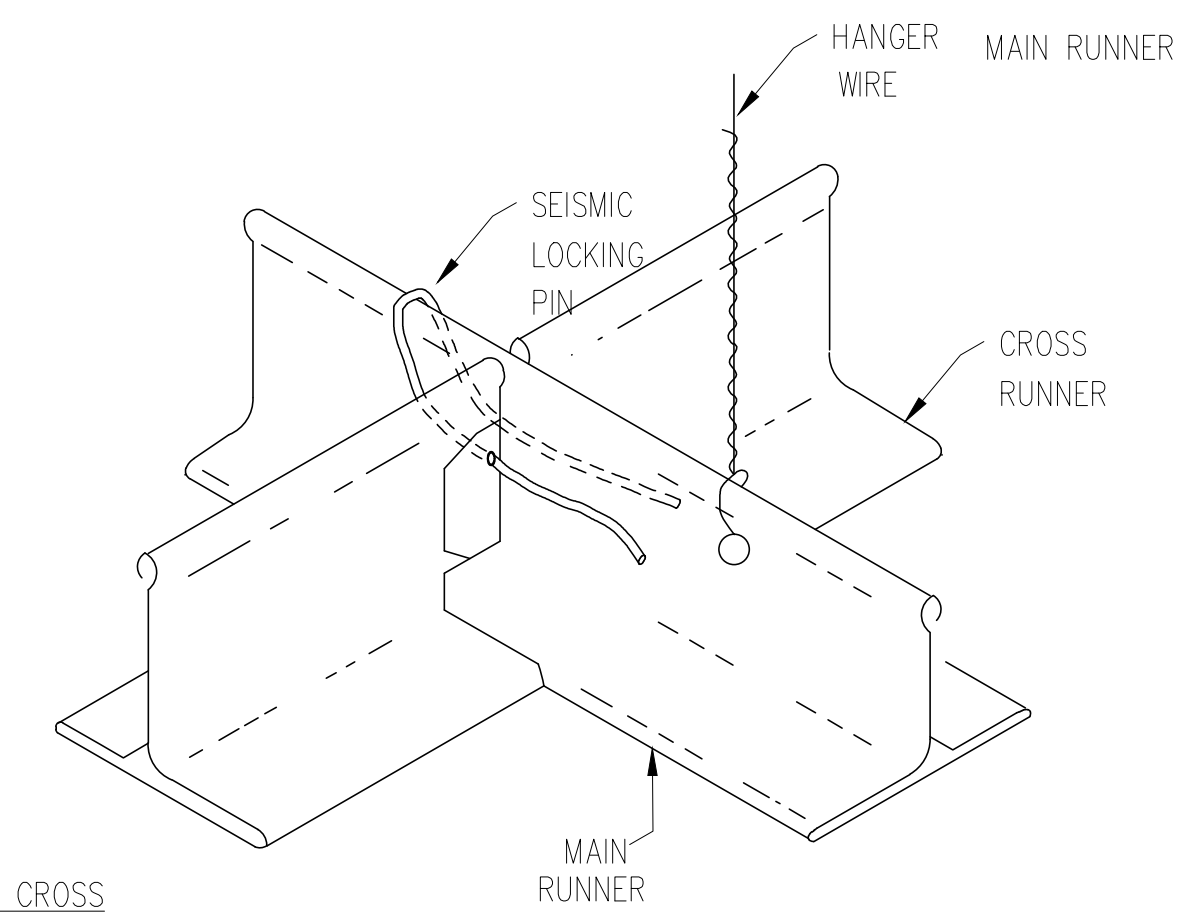
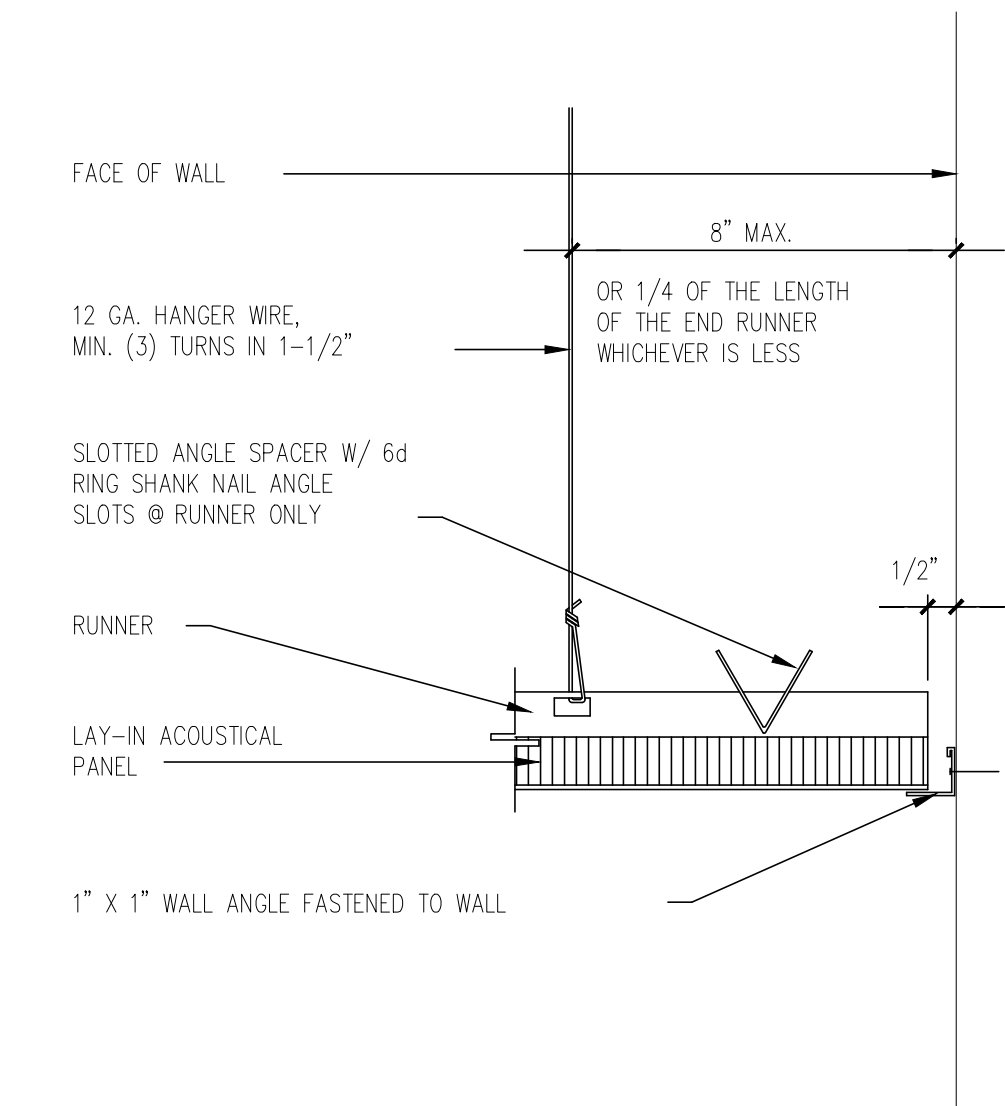
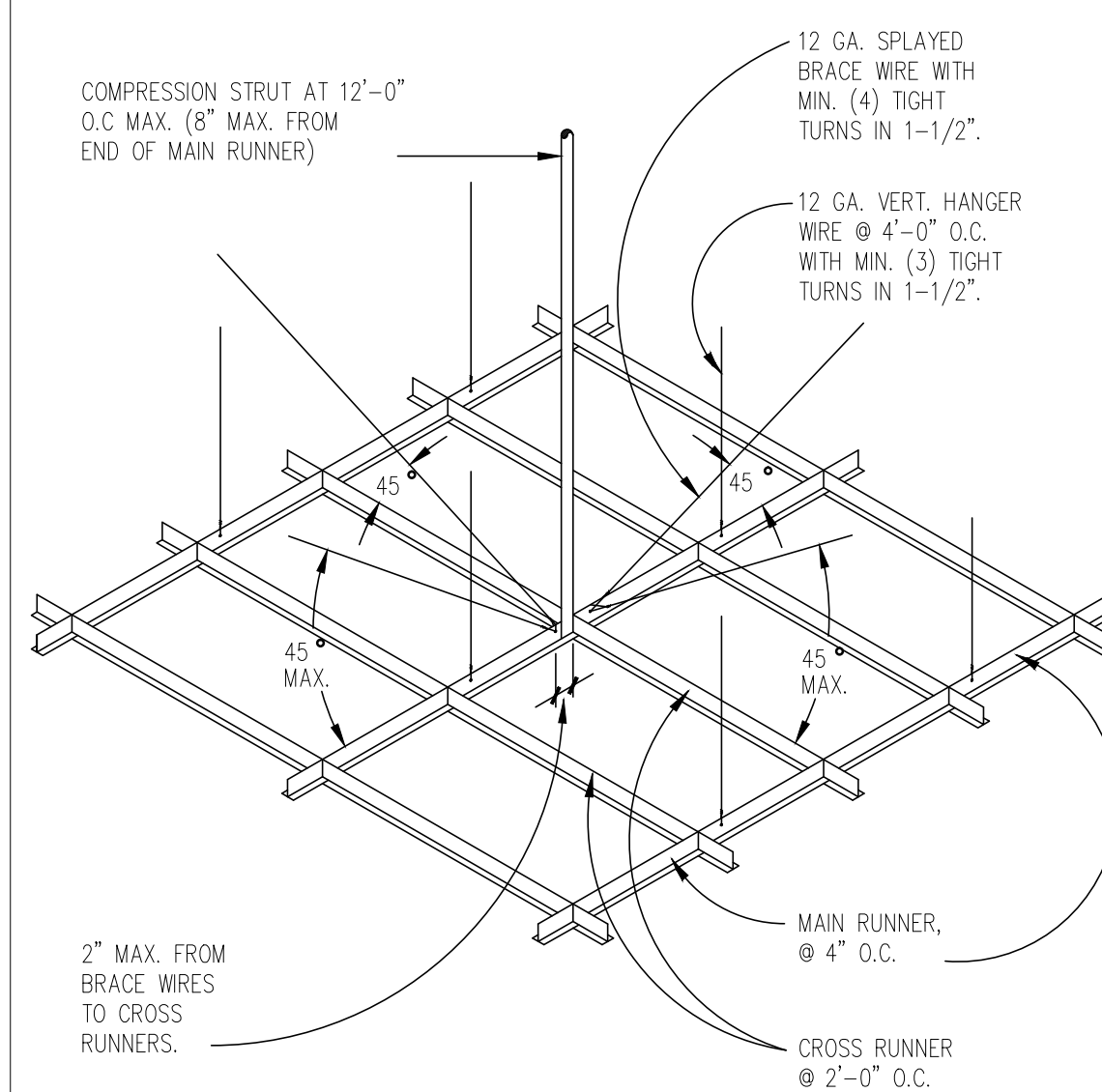
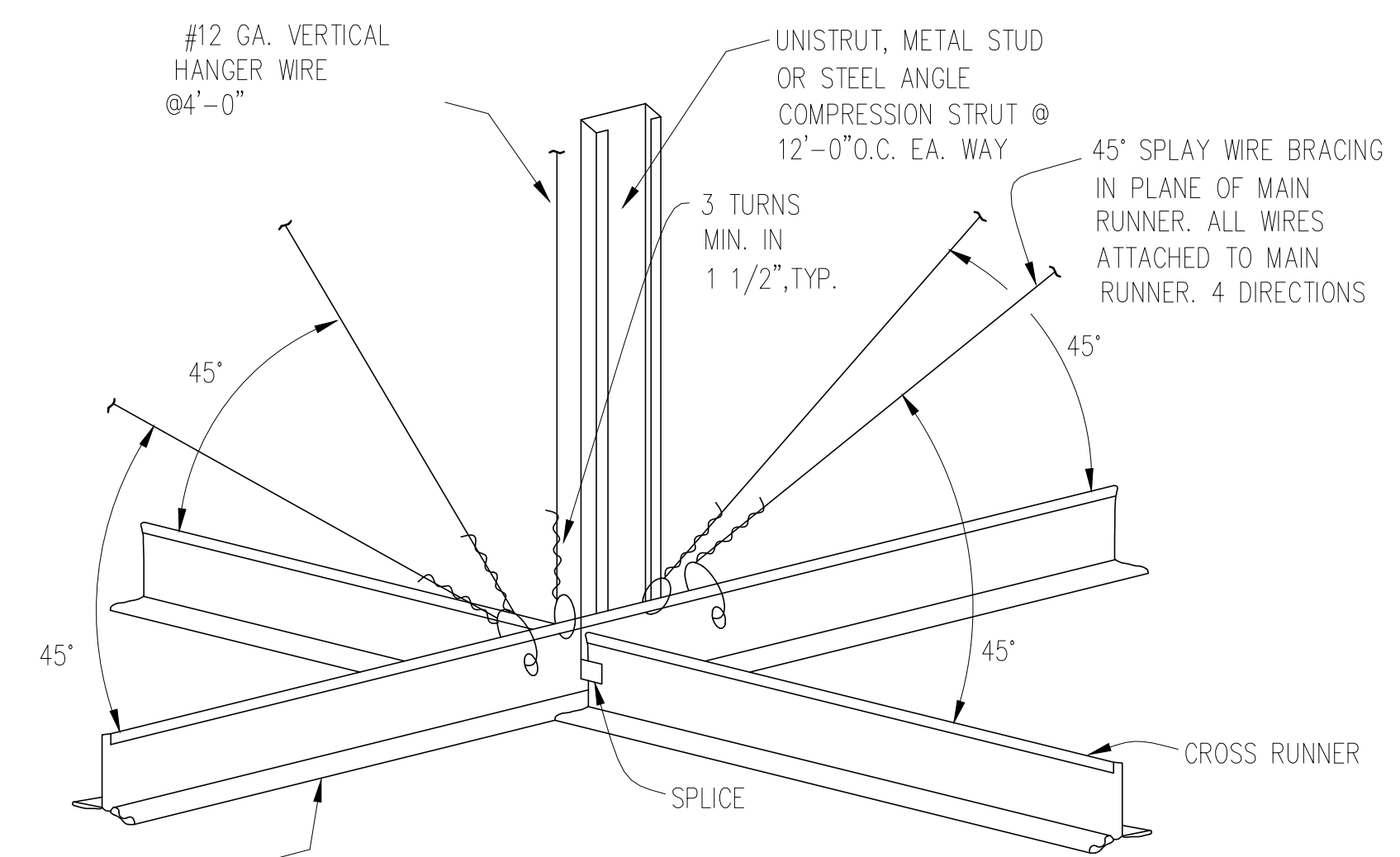
Revitas
511 Congress Street
Portland, ME 04101



INFORMATION

Path:
Issue Date: 01.17.12
Drawn By: RR
Checked By: DG
Revision:
1.
2.
3.
4.

TITLE
**Miscellaneous
Ceiling Details**
6th Floor
SCALE
AS NOTED



SUSPENDED CEILING DETAIL AT WALL

HANGER WIRE	ALLOW. TENSION
# 12	170#
11	225#
10	300#

LOCKING CLIP TO FASTEN CROSS RUNNER TO MAIN RUNNER

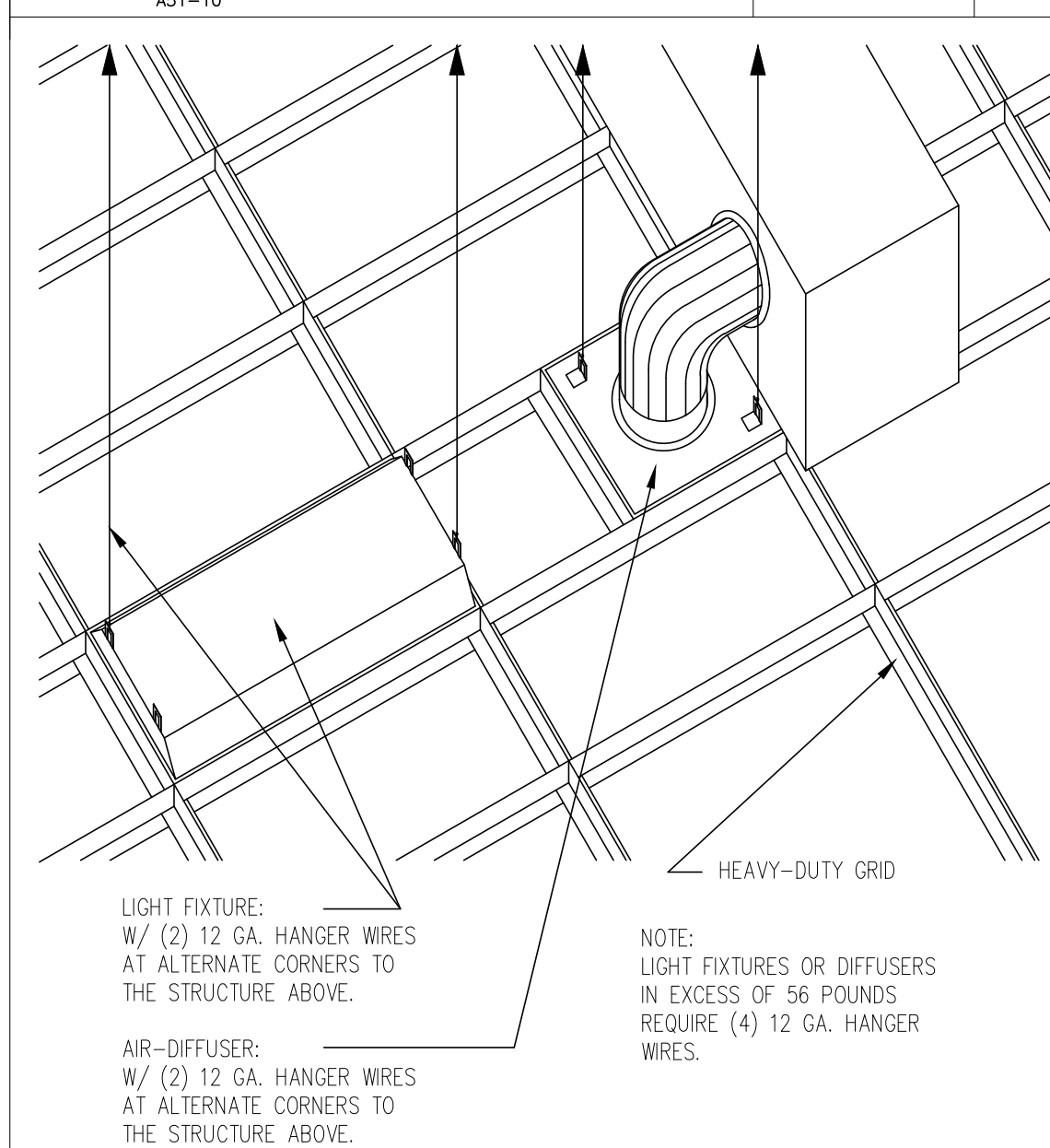
SPICES AND INTERSECTIONS OF RUNNERS SHALL BE ATTACHED WITH MECHANICAL INTERLOCKING CONNECTIONS SUCH AS POP RIVETS, SCREWS, PINS PLATES WITH BENT TABS, OR OTHER APPROVED CONNECTORS. DESIGN CONNECTORS FOR 2 X DESIGN LOAD OR ULTIMATE AXIAL TENSION OR COMPRESSION (MINIMUM 60 POUNDS).

NO SCALE

SUSPENDED CEILING SEISMIC DETAIL (WHERE REQ'D BY CODE)

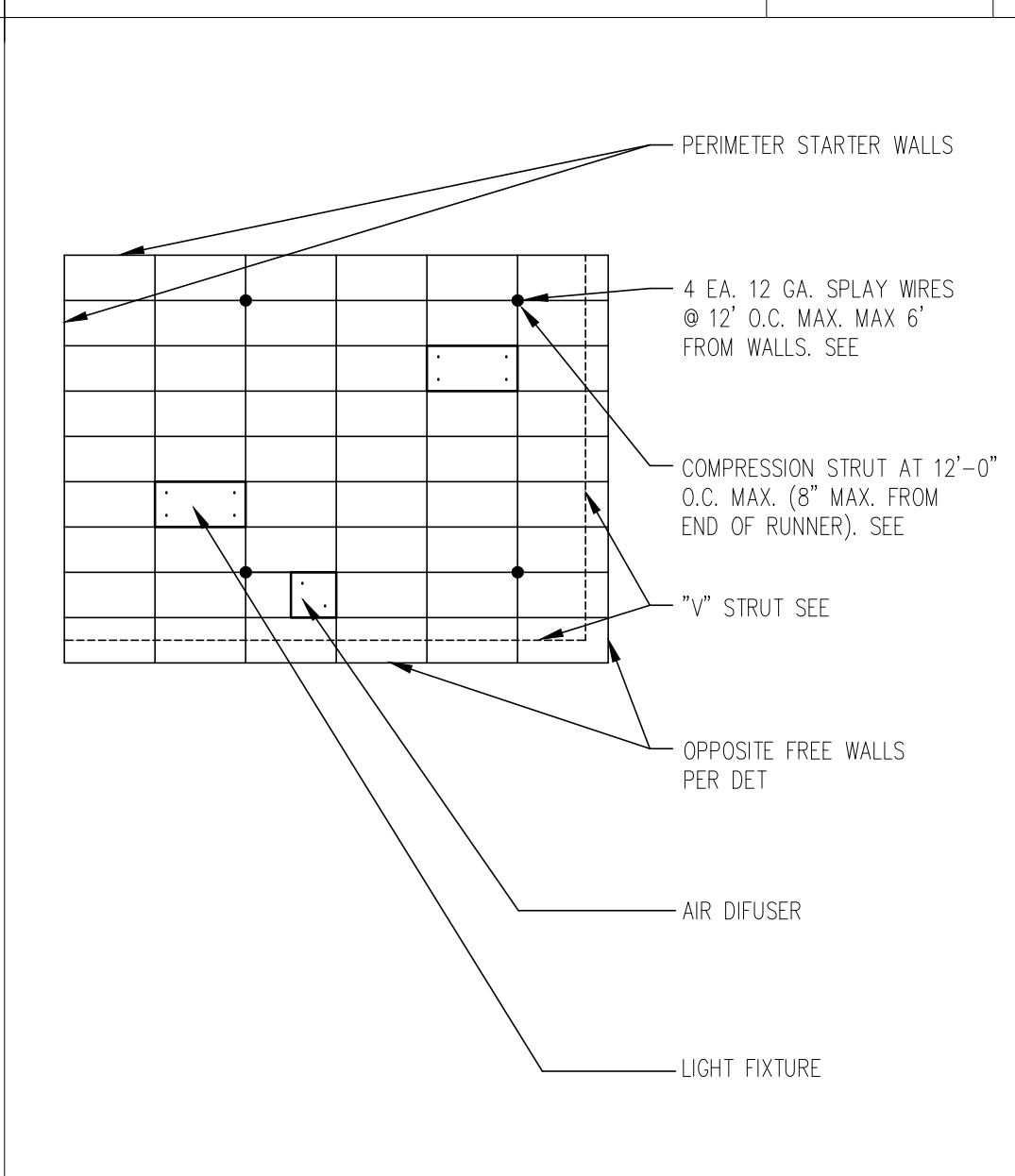
CEILING GRID LAYOUT

NO SCALE



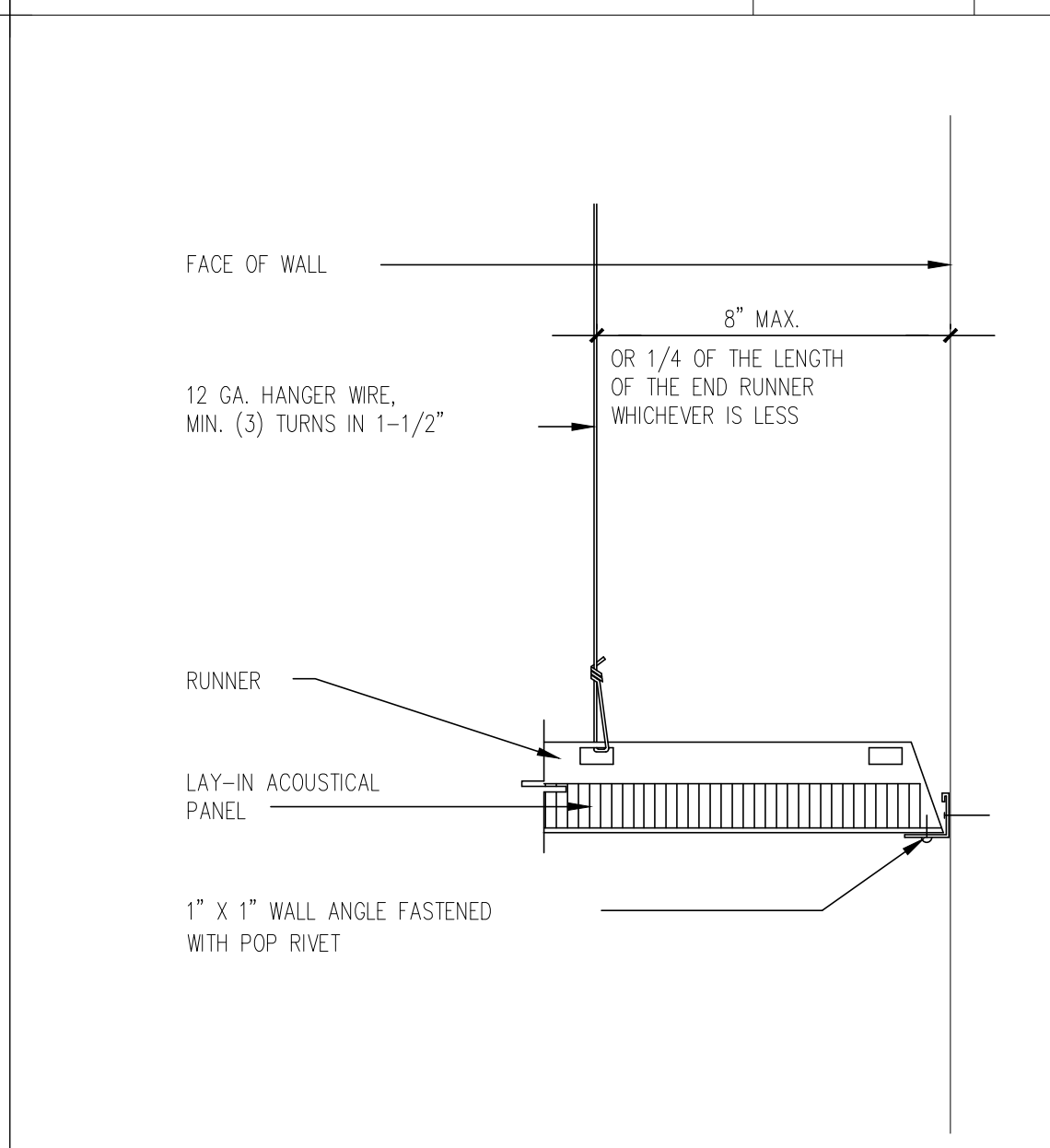
CEILING PERIMETER

3"=1'-0"



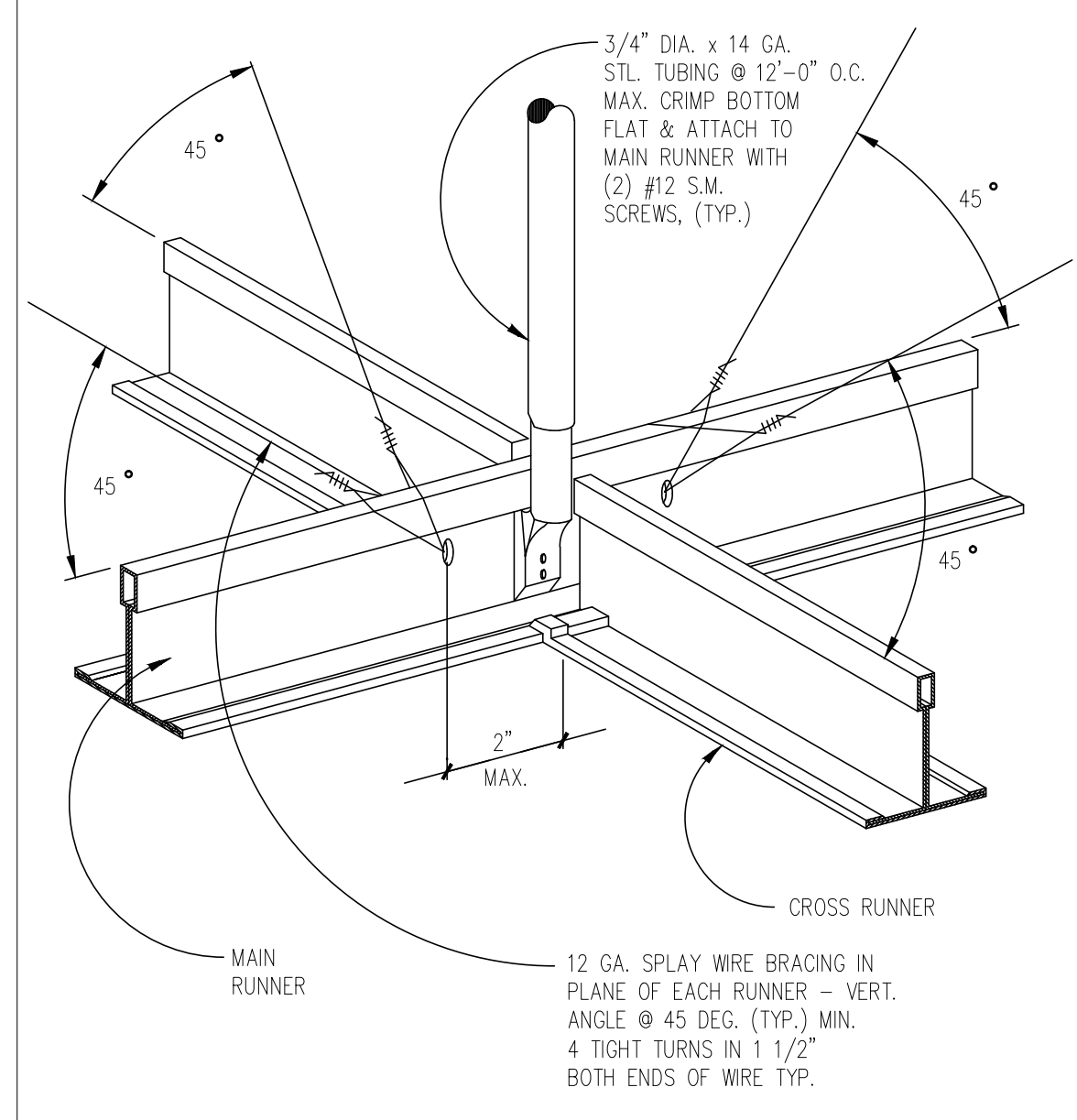
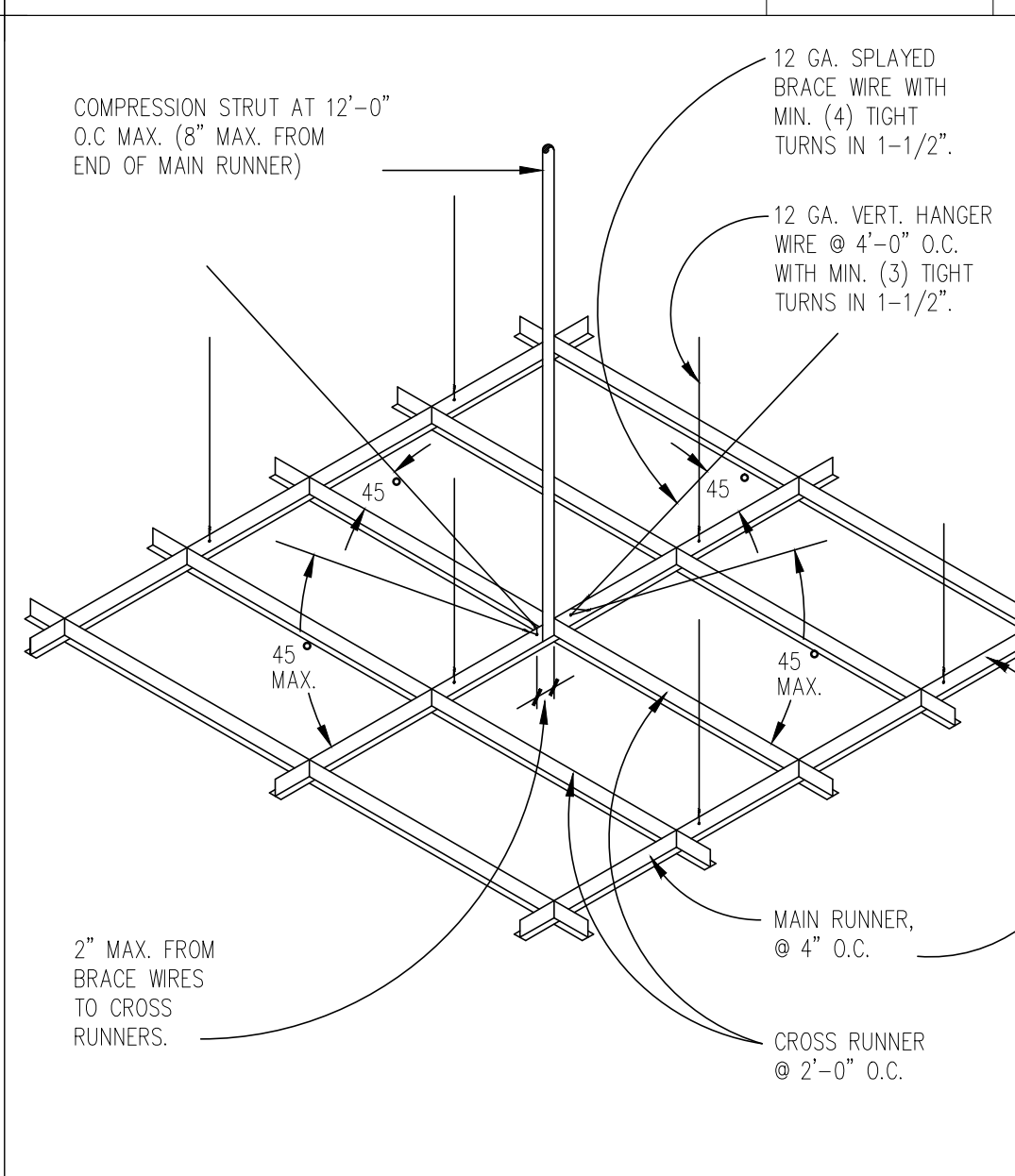
FIXTURE BRACING

NO SCALE



CEILING GRID LAYOUT

1/8"=1'-0"



SPLAY WIRE BRACING

NO SCALE

CEILING PERIMETER

3"=1'-0"

CEILING GRID LAYOUT

NO SCALE

PROJECT

Office Renovation
Revitas
 511 Congress Street
 Portland, Maine

CLIENT

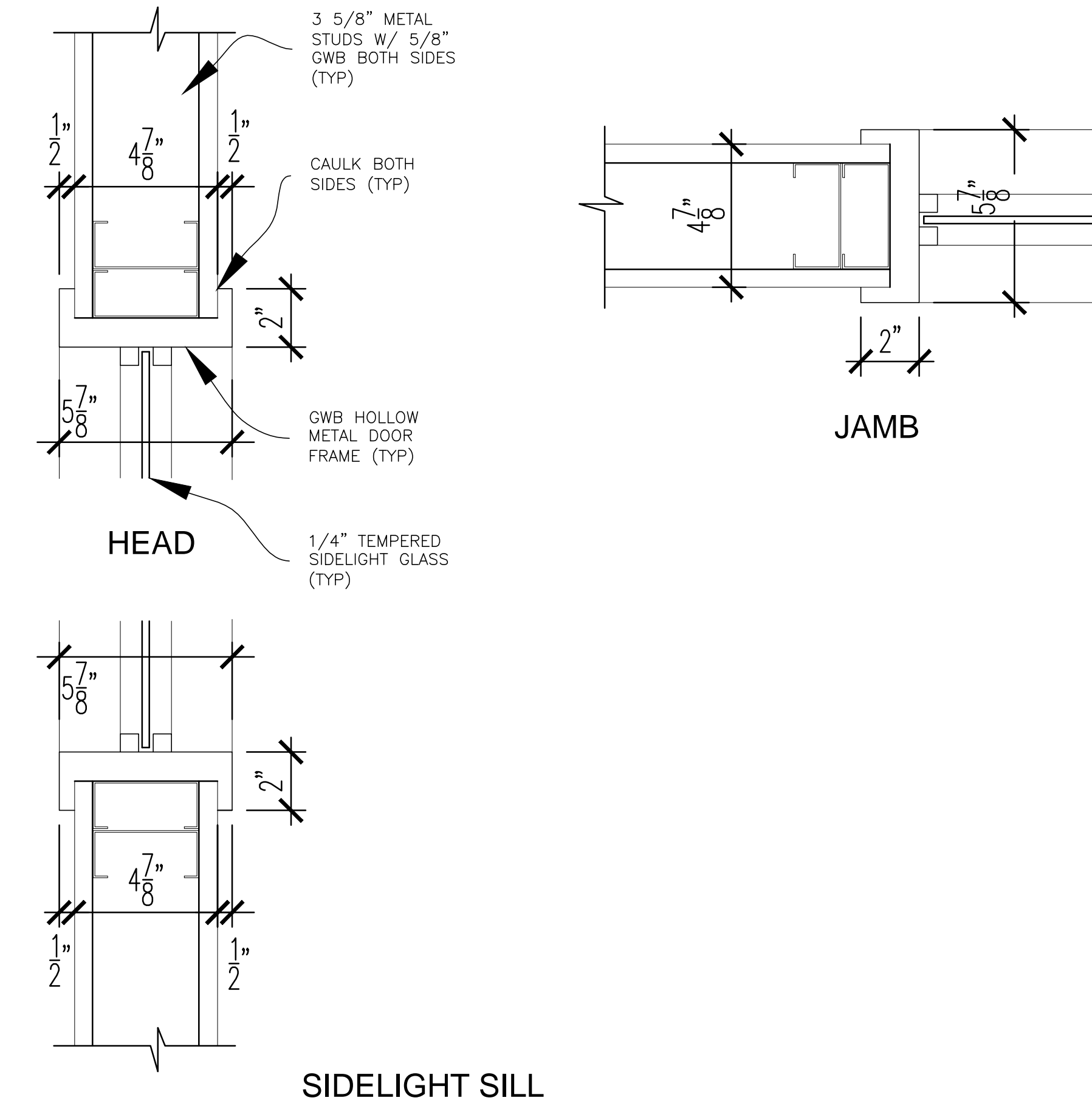
Revitas
 511 Congress Street
 Portland, ME 04101



INFORMATION

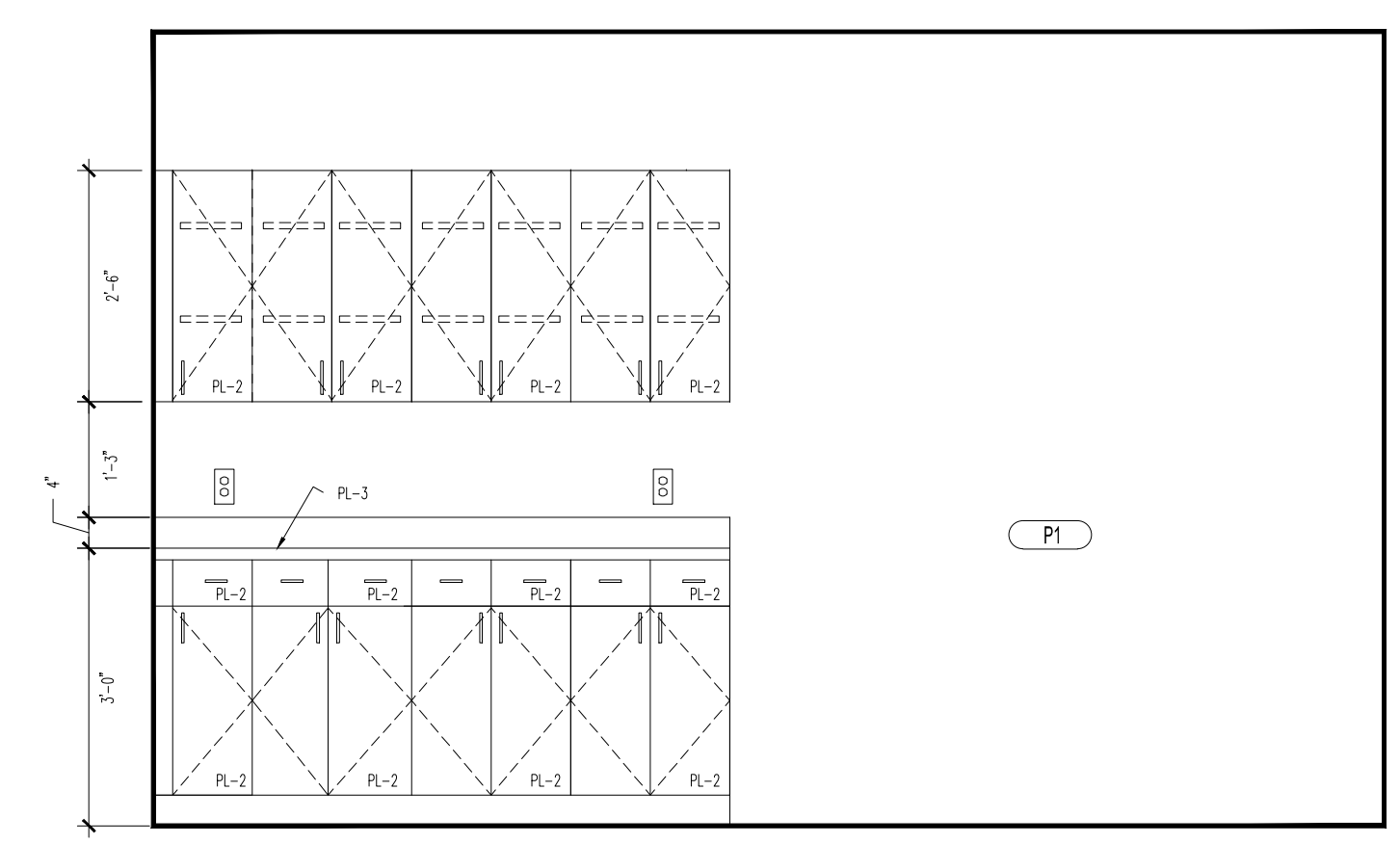
Path:
 Issue Date: 01.17.12
 Drawn By: RR
 Checked By: DG
 Revision:
 1.
 2.
 3.
 4.

TITLE
Interior Elevations
 6th Floor
 SCALE
 AS NOTED

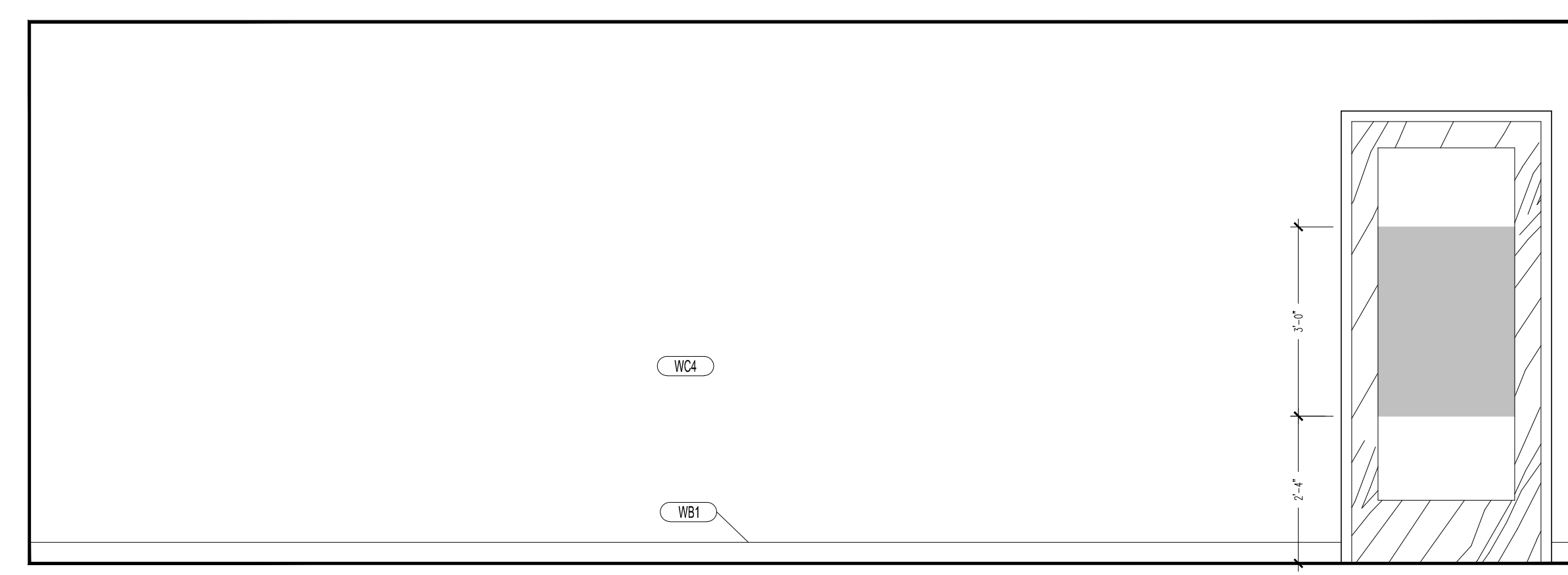


6 Hollow Metal Details
 Scale: 1 1/2" = 1'-0"

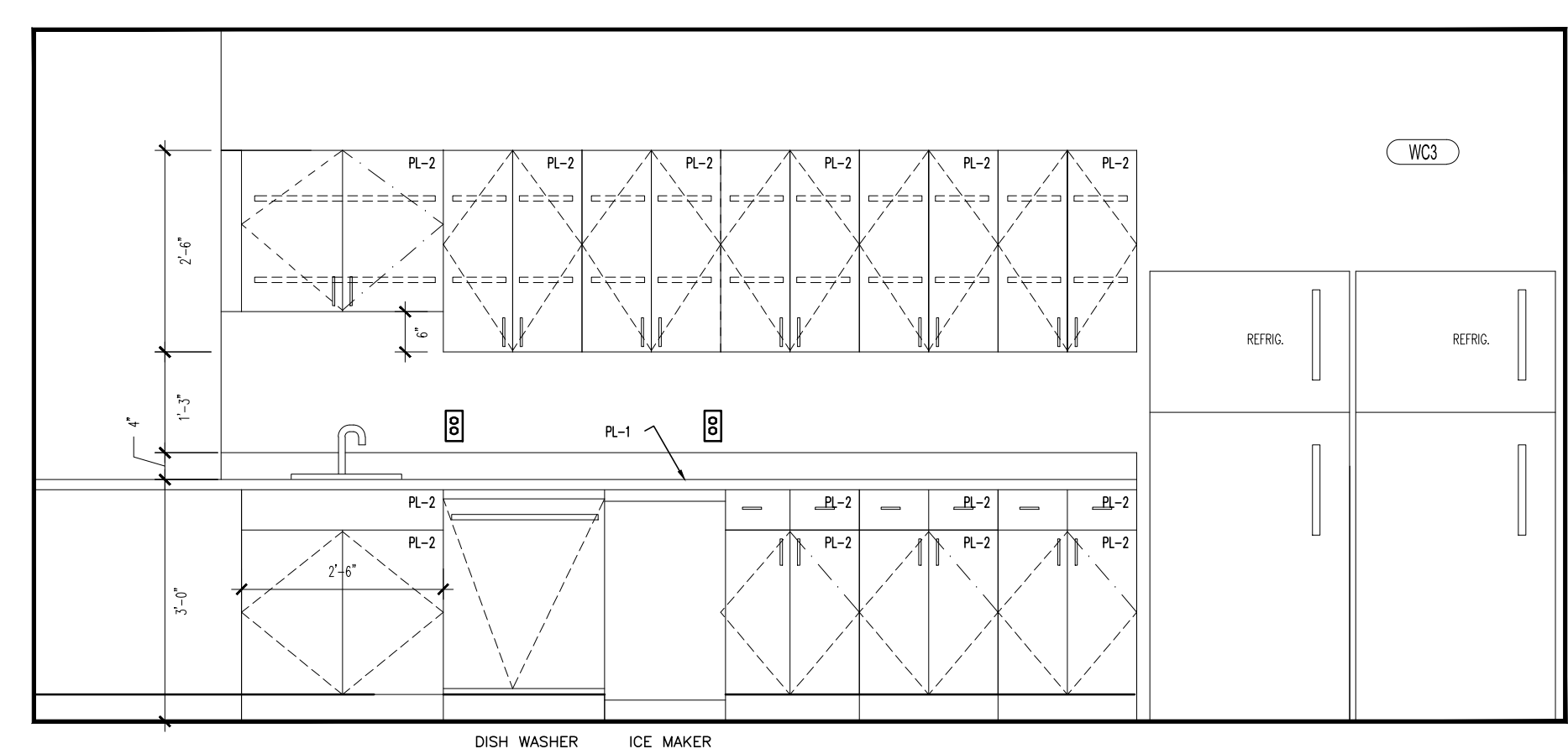
- | | |
|--|---|
| <p>WALLS</p> <ul style="list-style-type: none"> P1 TYPE: WHITE PAINT
PRODUCT: BENJAMIN MOORE
COLOR: PO-50 925
LOCATION: TYP. U.O.N. P2 TYPE: ACCENT PAINT
MANUFACTURER: BENJAMIN MOORE
COLOR: PO-50 925
LOCATION: FRAME AND WOOD BASE P3 TYPE: ACCENT PAINT
MANUFACTURER: BENJAMIN MOORE
COLOR: VALLEY FORGE TAN #AC-35 P4 TYPE: ACCENT PAINT
MANUFACTURER: BENJAMIN MOORE
COLOR: BLAY BEIGE OC-11
LOCATION: WOOD BASE WC1 TYPE: DECORATIVE PANELS
MANUFACTURER: KIREI BOARD
SIZE: 21MM
LOCATION: LOBBY SIGNAGE WF2 TYPE: DECORATIVE PANELS
MANUFACTURER: PAPERSTONE
PRODUCT: COLOR: MOCHA
SIZE: 10MM
LOCATION: LOBBY SIGNAGE | <p>PLASTIC LAMINATE</p> <ul style="list-style-type: none"> PL1 TYPE: KITCHEN COUNTERTOP
MANUFACTURER: PIONITE
PRODUCT: PUTTY GRAY
COLOR: SG209 SUEDE PL2 TYPE: KITCHEN WALL AND BASE CABINETS
MANUFACTURER: FORMICA
PRODUCT: SEAGRASS STRAND 6214-68MATTIE <p>MISCELLANEOUS</p> <ul style="list-style-type: none"> WF1 TYPE: WINDOW FILM
MANUFACTURER: 3M
PRODUCT: PASHA INTERIOR DESIGN FILM
COLOR: MAT CRYSTAL 1
LOCATION: CONFERENCE ROOMS AT FRONT LOBBY - SEE ELEVATIONS FOR LOCATION.
NOTE: SH2MA-CRX WB1 TYPE: WHITE BOARD
NOTE: OWNER PROVIDED, CONTRACTOR INSTALLED. PROVIDE BACKING AT ALL WHITE BOARD LOCATIONS. GL1 TYPE: 1/2" GLASS
COLOR: CLEAR
SIZE: 1/2" THICK, H: 4'-8" (SEE DOOR SCHEDULE AND ELEVATIONS)
W: VARIES
SPECIFICATIONS: TEMPERED, SAFETY GLASS |
|--|---|



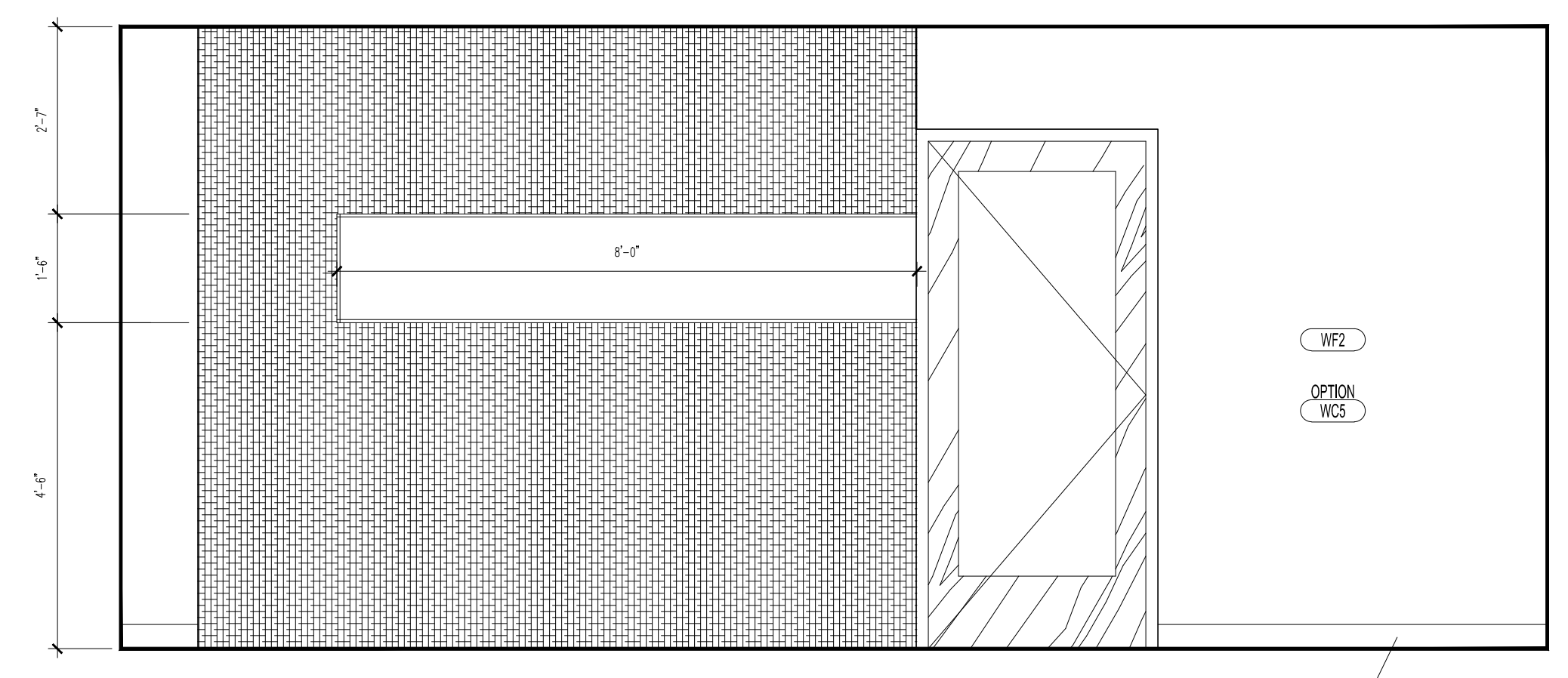
5 Copy Room Interior Elevation
 Scale: 1/4" = 1'-0"



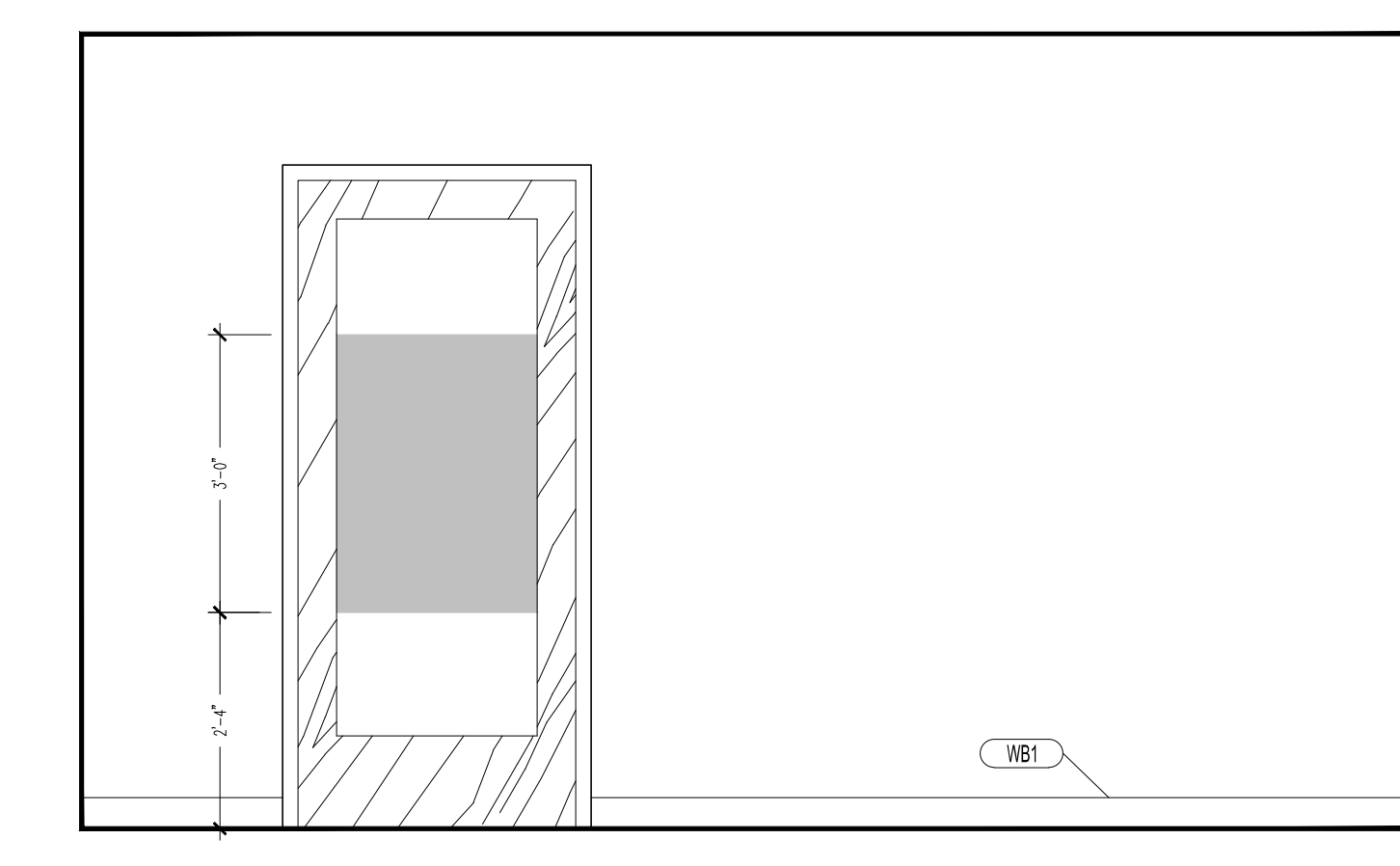
4 Inner Office - View Looking Towards New Conference Room
 Scale: 1/4" = 1'-0"



3 Kitchen Interior Elevation
 Scale: 1/4" = 1'-0"



2 Lobby Interior Elevation
 Scale: 1/4" = 1'-0"



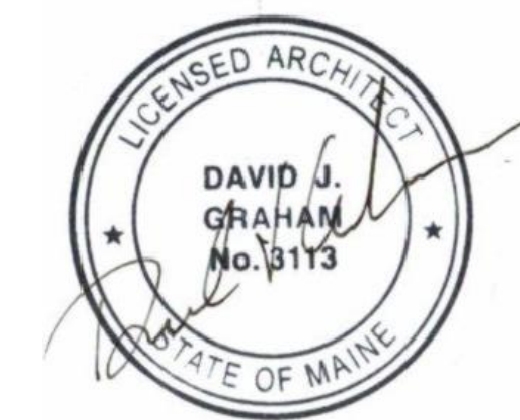
1 Lobby Interior Elevation
 Scale: 1/4" = 1'-0"

PROJECT

Office Renovation
Revitas
 511 Congress Street
 Portland, Maine

CLIENT

Revitas
 511 Congress Street
 Portland, ME 04101

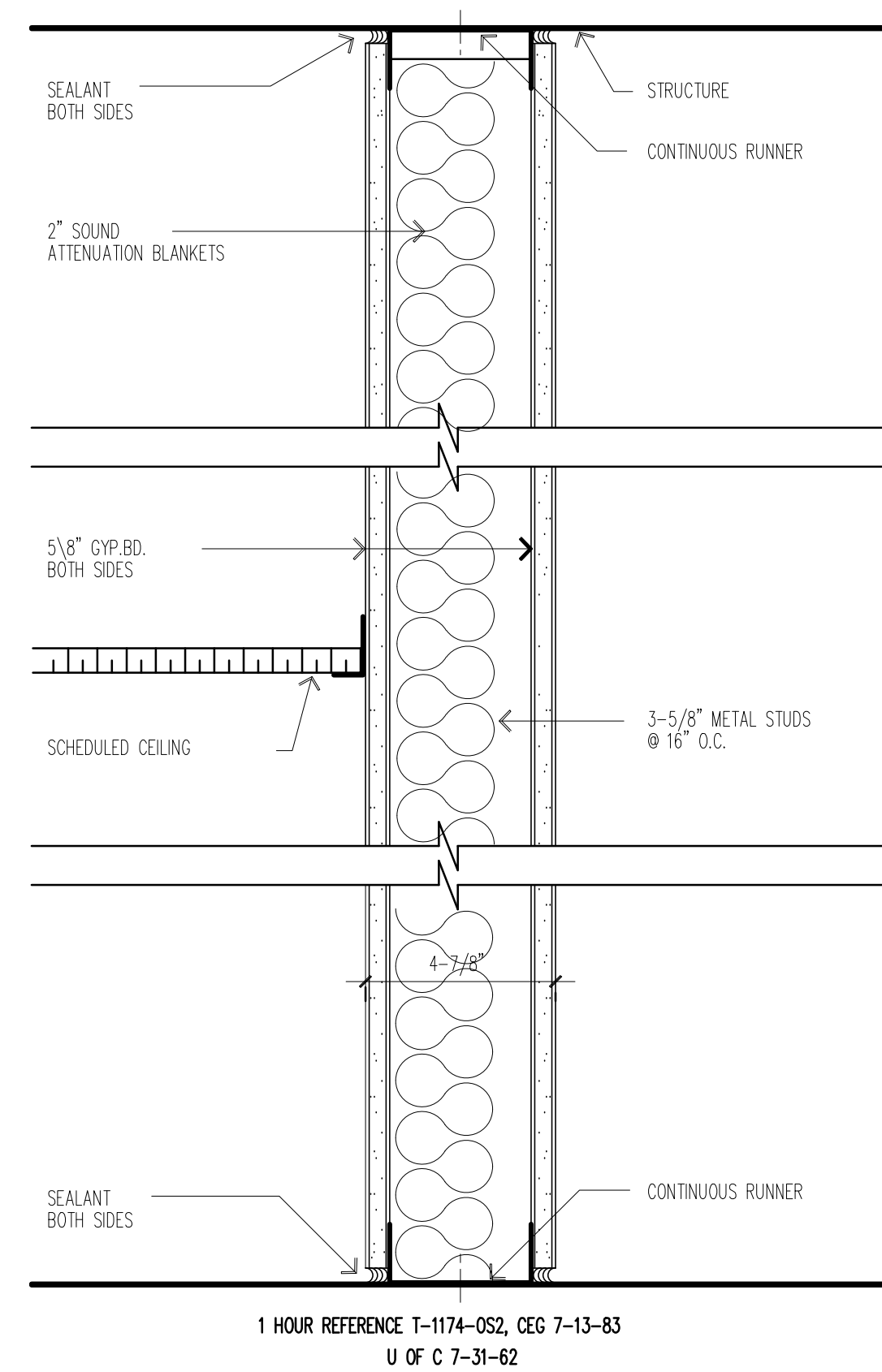


INFORMATION

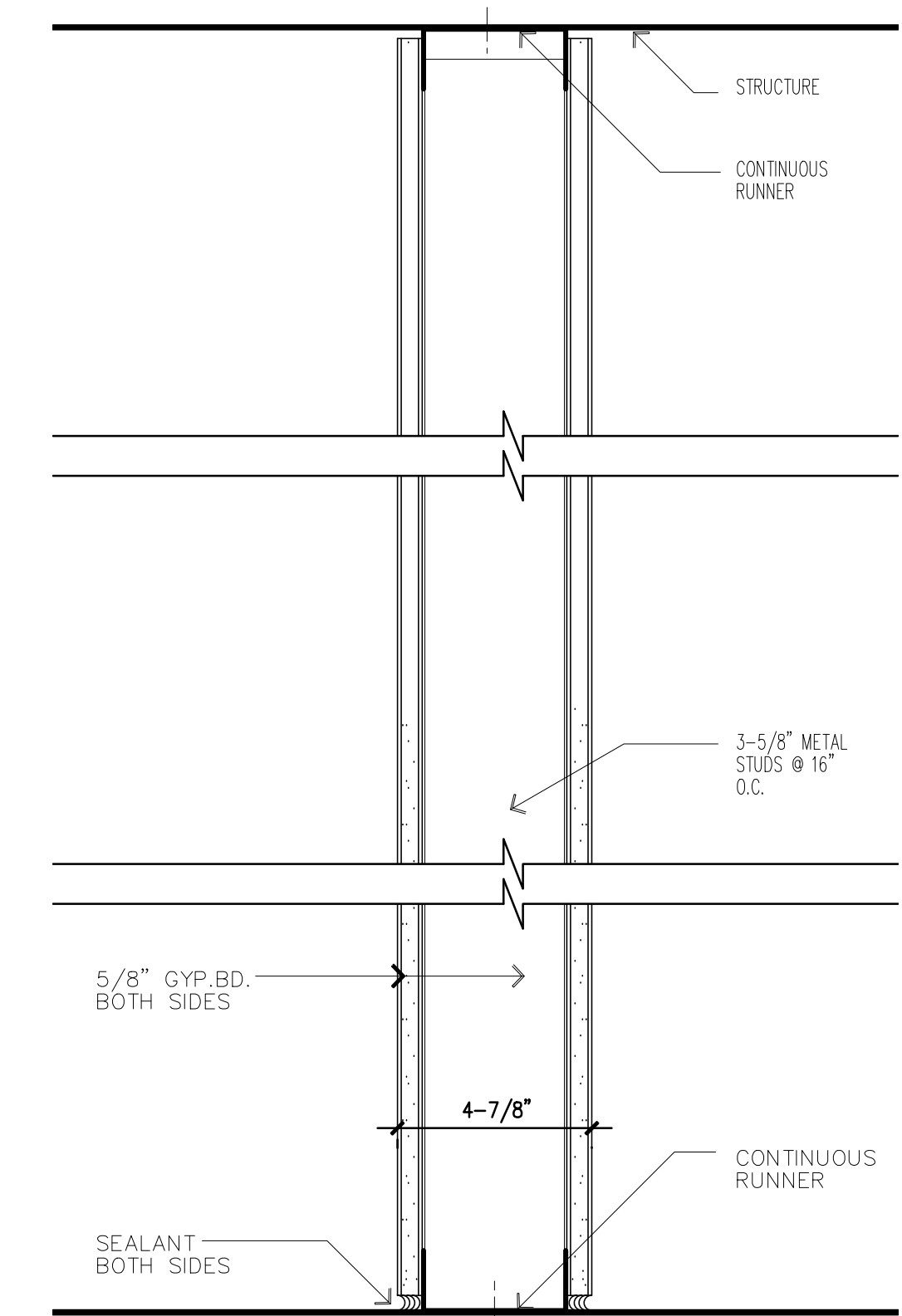
Path:
 Issue Date: 01.17.12
 Drawn By: RR
 Checked By: DG
 Revision:

- 1.
- 2.
- 3.
- 4.

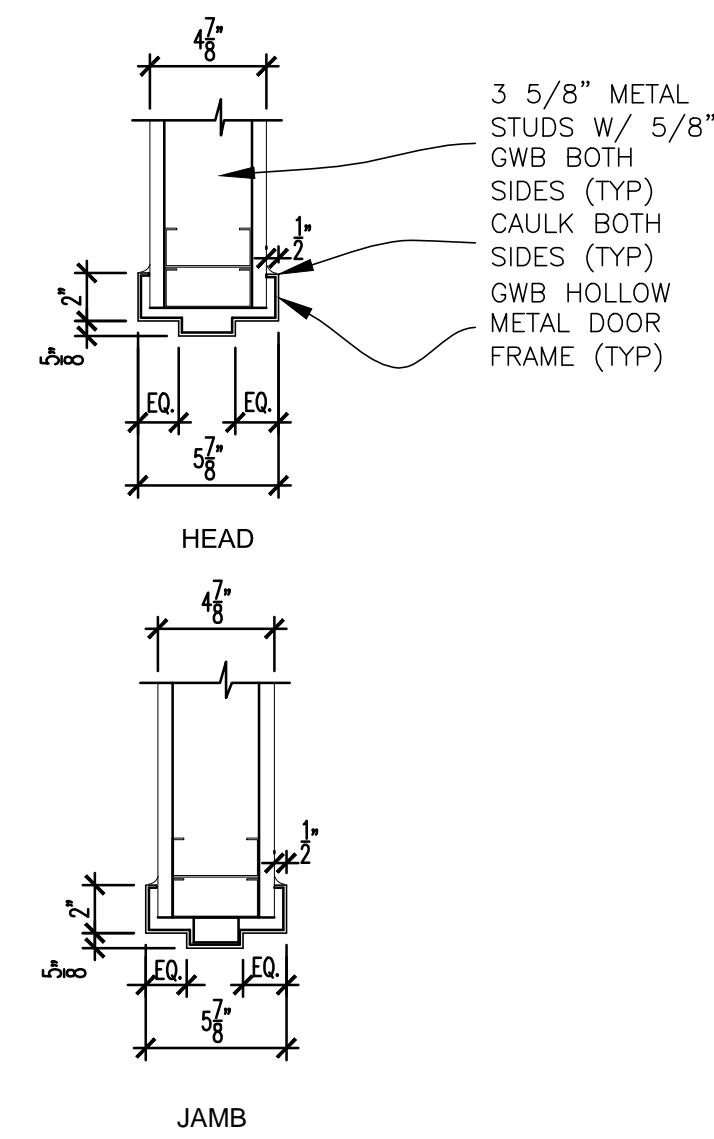
TITLE
Door Schedule & Types
Wall Types
6th Floor
 SCALE
 AS NOTED



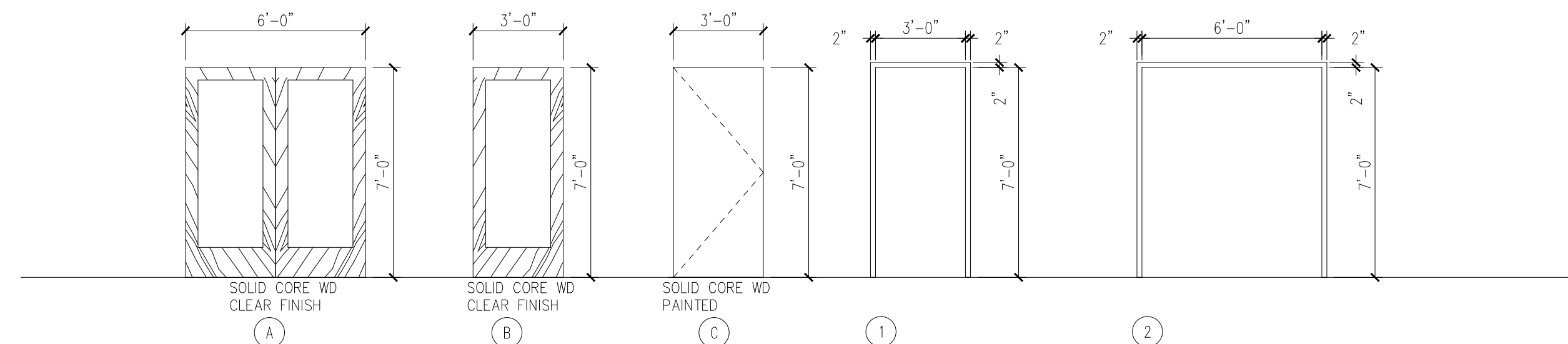
2 Wall Type
 Scale: NTS



1 Wall Type
 Scale: NTS



3 Door Frame Details
 Scale: 1/2" = 1'-0"



2 Door & Frame Types
 Scale: 1/2" = 1'-0"

DOOR SCHEDULE															
DOOR MARK	TYPE	SIZE WIDTH X HEIGHT	THICK- NESS	UNDER CUT	CONST- RUCTION	GLASS	FRAME	FIRE RATING	FINISH			DETAIL			REMARKS
									DOOR	FRAME	HARDWARE	HEAD	JAMB	SILL	
01	A	6'-0" X 7'-0"	1-3/4"	-	SC	TP	HM		WV	PTD	MATCH				
02	B	3'-0" X 7'-0"	1-3/4"	-	SC	-	HM		WV	PTD	MATCH				
03	B	3'-0" X 7'-0"	1-3/4"	-	SC	TP	HM		WV	PTD	MATCH				RETAIN ELECTRONIC CARD ACCESS
04	B	3'-0" X 7'-0"	1-3/4"	-	SC	-	AL		WV	AL	MATCH				
05	B	3'-0" X 7'-0"	1-3/4"	-	SC	-	AL		WV	AL	MATCH				
06	B	3'-0" X 7'-0"	1-3/4"	-	SC	-	HM		WV	PTD	MATCH				

DOOR NOTES

1. SYMBOL "✓" SHOWN ON SCHEDULE INDICATES A REPEAT OF A PREVIOUS REFERENCE ON THE SCHEDULE.
2. ALL DOORS ARE 1-3/4" THICK UNLESS OTHERWISE NOTED.
3. DOOR CONSTRUCTION: TYPICAL - SC - SOLID CORE HC - HOLLOW CORE
 HM - HOLLOW METAL AL - ALUMINUM & GLASS
4. FINISH TYPICAL - WV - WOOD VENEER PL - PLASTIC LAMINATE
 MP - METAL PAINTED AP - ALUMINUM PAINTED
5. GLASS TYPICAL - CW - CLEAR WIRE CP - CLEAR PLATE
 TP - TEMPERED LG - LEADED GLASS
6. FRAME TYPICAL - FF - FLUSH FRAME AL - ALUMINUM
 HM - HOLLOW METAL WD - WOOD
 AP - ALUMINUM PAINTED
7. MAXIMUM GLASS AREA FOR 45 MIN. AND 20 MIN. DOOR SHALL NOT EXCEED 1296 SQ.IN. AND HAVE A MAX. LITE DIMENSION OF 54". MAXIMUM GLASS AREA FOR 90 MIN. DOOR SHALL BE 100 SQ.IN.
1. DOOR NO. ② REFER TO SCHEDULE FOR HARDWARE, MODIFICATIONS, REMARKS, ETC.
2. THE FOLLOWING NOTES APPLY TO ALL HOLLOW METAL FRAMES:
 - A. ALL HOLLOW METAL FRAMES IN MASONRY OPENINGS SHALL BE FULLY GROUTED
 - B. ALL HOLLOW METAL FRAMES SHALL BE FIELD PAINTED
 - C. ALL DOOR JAMB ANCHORS SHALL BE VERIFIED WITH PLAN CONDITIONS AND SPECIFICATIONS
 - D. LABELED DOOR AND FRAMES SHALL CONFORM TO NFPA NO. 80.
 - E. PEENED KNOBS SHALL BE PROVIDED FOR ALL DOORS FROM CORRIDORS TO ELECTRICAL CLOSETS, MECHANICAL ROOMS, TELEPHONE CLOSETS, AND STAIR PENTHOUSES
 - F. ALL FRAMES ARE "WRAP AROUND" UNLESS NOTED

1 Door Schedule
 Scale: NTS