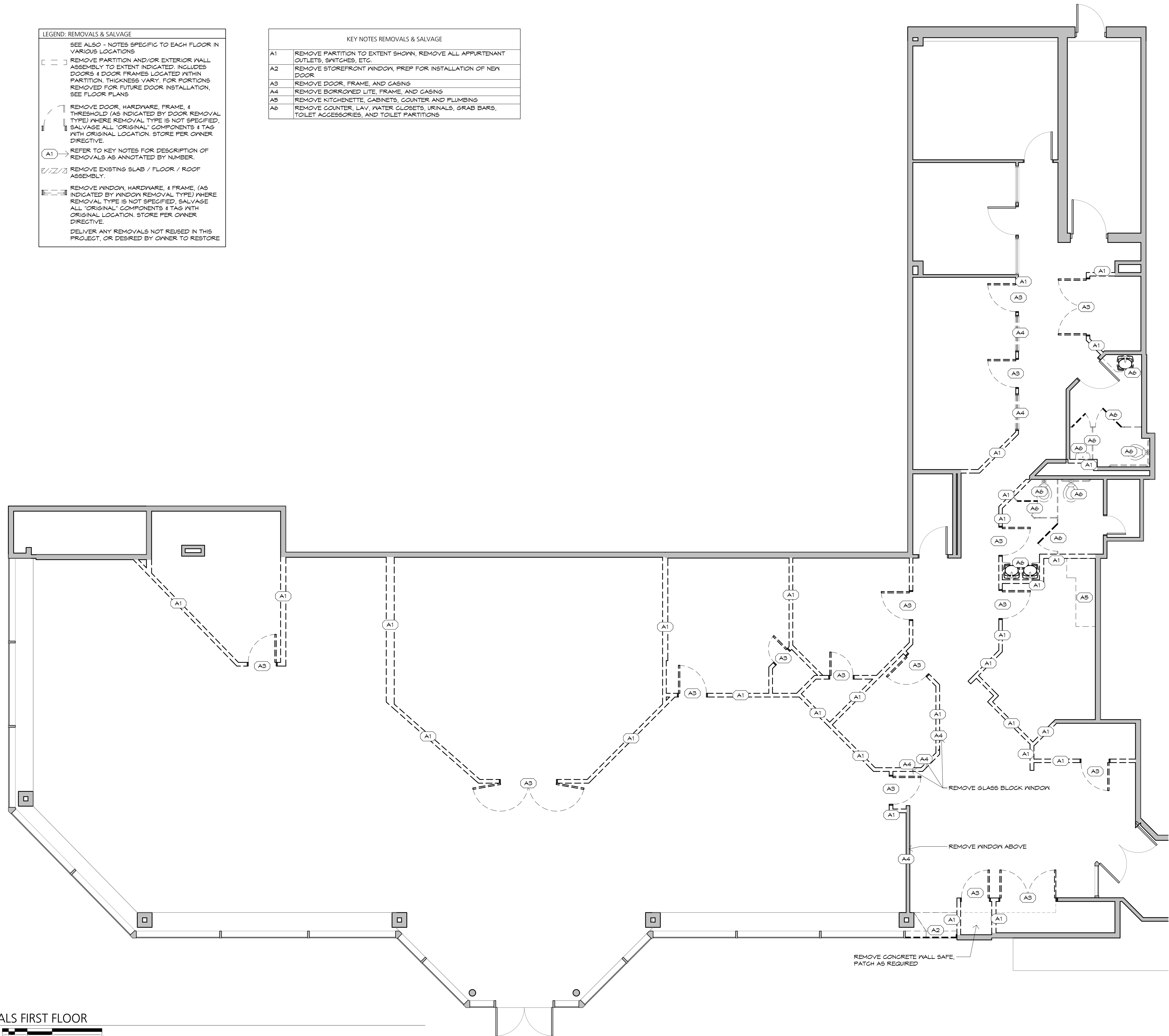


LEGEND: REMOVALS & SALVAGE	
SEE ALSO - NOTES SPECIFIC TO EACH FLOOR IN VARIOUS LOCATIONS	
	REMOVE PARTITION AND/OR EXTERIOR WALL ASSEMBLY TO EXTENT INDICATED. INCLUDES DOORS & DOOR FRAMES LOCATED WITHIN PARTITION. THICKNESS VARY. FOR PORTIONS REMOVED FOR FUTURE DOOR INSTALLATION, SEE FLOOR PLANS
	REMOVE DOOR, HARDWARE, FRAME, & THRESHOLD (AS INDICATED BY DOOR REMOVAL TYPE) WHERE REMOVAL TYPE IS NOT SPECIFIED. SALVAGE ALL "ORIGINAL" COMPONENTS & TAG WITH ORIGINAL LOCATION. STORE PER OWNER DIRECTIVE.
	REFER TO KEY NOTES FOR DESCRIPTION OF REMOVALS AS ANNOTATED BY NUMBER.
	REMOVE EXISTING SLAB / FLOOR / ROOF ASSEMBLY.
	REMOVE WINDOW, HARDWARE, & FRAME, (AS INDICATED BY WINDOW REMOVAL TYPE) WHERE REMOVAL TYPE IS NOT SPECIFIED. SALVAGE ALL "ORIGINAL" COMPONENTS & TAG WITH ORIGINAL LOCATION. STORE PER OWNER DIRECTIVE.
DELIVER ANY REMOVALS NOT REUSED IN THIS PROJECT, OR DESIRED BY OWNER, TO RESTORE	

KEY NOTES REMOVALS & SALVAGE	
A1	REMOVE PARTITION TO EXTENT SHOWN, REMOVE ALL APPURTENANT OUTLETS, SWITCHES, ETC.
A2	REMOVE STOREFRONT WINDOW, PREP FOR INSTALLATION OF NEW DOOR
A3	REMOVE DOOR, FRAME, AND CASING
A4	REMOVE BORROWED LITE, FRAME, AND CASING
A5	REMOVE KITCHENETTE, CABINETS, COUNTER AND PLUMBING
A6	REMOVE COUNTER, LAV, WATER CLOSETS, URINALS, GRAB BARS, TOILET ACCESSORIES, AND TOILET PARTITIONS



1 REMOVALS FIRST FLOOR
AD101 3/16" = 1'-0"



FOR PERMIT ONLY
NOT FOR CONSTRUCTION

511 CONGRESS STREET EVENT SPACE
OCEAN GARE REALTY
511 CONGRESS STREET
PORTLAND, ME 04101

FIRST FLOOR REMOVALS PLAN
ISSUED FOR: PERMIT
DRAWN BY: B+W
DATE: 01/02/2017
SHEET SIZE: 22" x 34"
Copyright 2018 Barba + Wheellock

511 EVENT SPACE
AD101