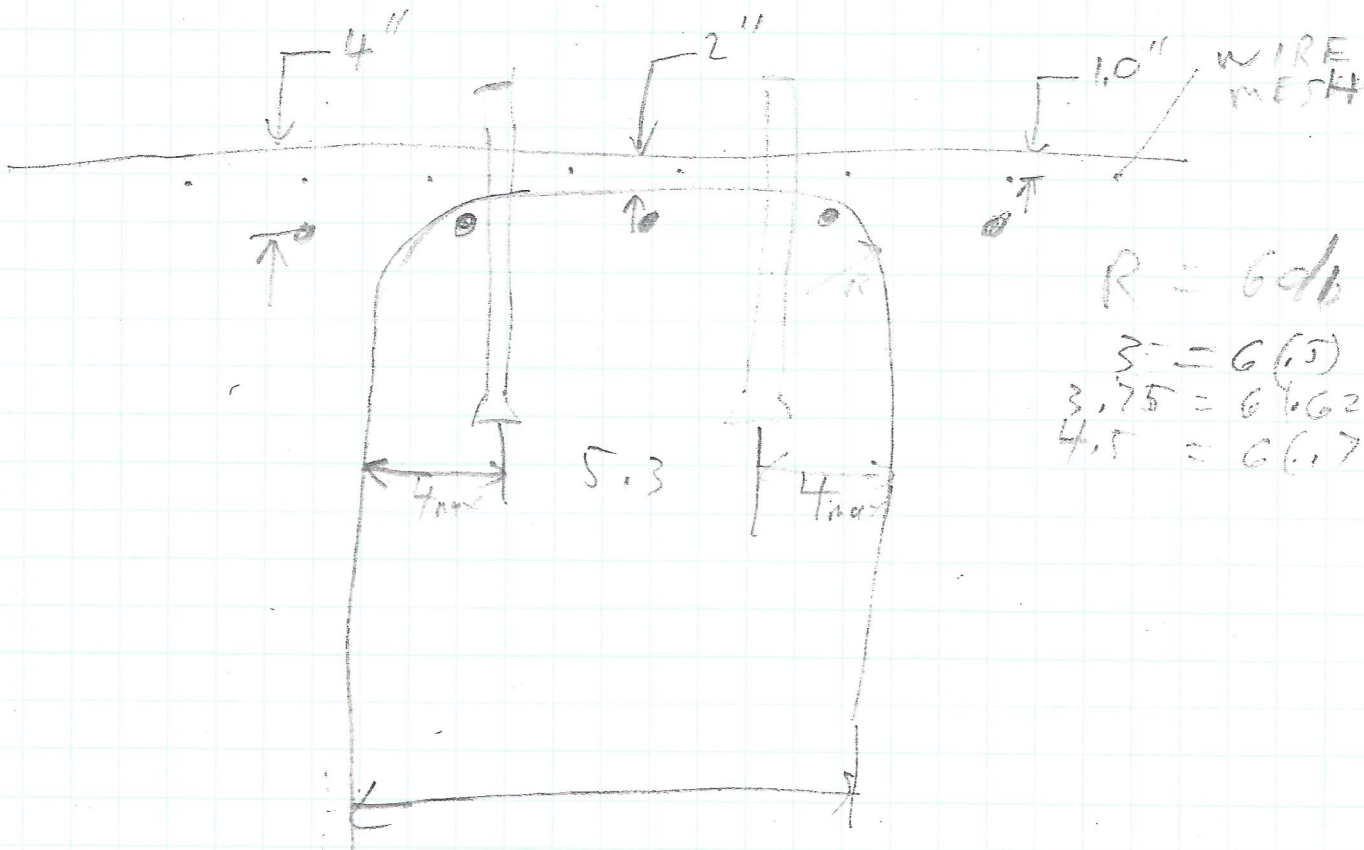


ANCHOR REINFORCEMENT FOR TENSION



$$R = 6db$$

$$3 = 6(.5)$$

$$3.75 = 6(.625)$$

$$4.5 = 6(.75)$$

C TO C OF REBAR FOR REINFORCEMENT

$$5.3 + 8 = 13.3 \text{ max}$$

ANCHOR REINFORCEMENT FOR SIDE BLOWOUT

HORIZONTAL REBAR GROUPS @ A DEPTH OF 4"

