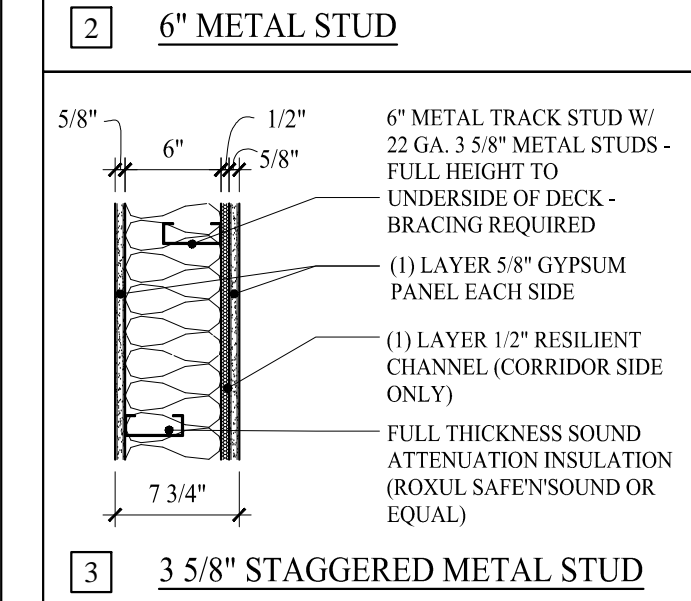
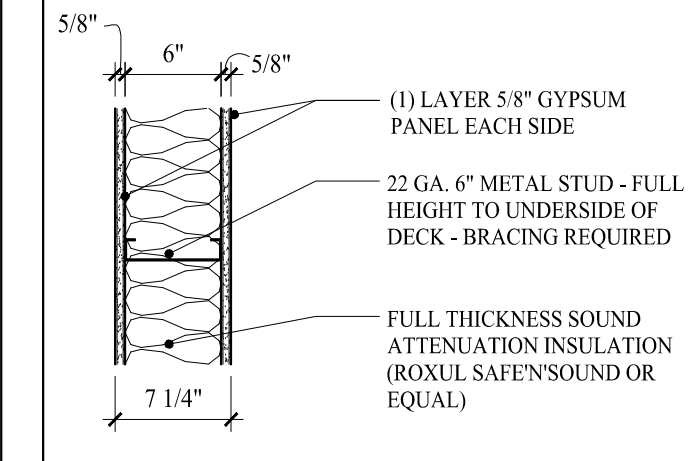
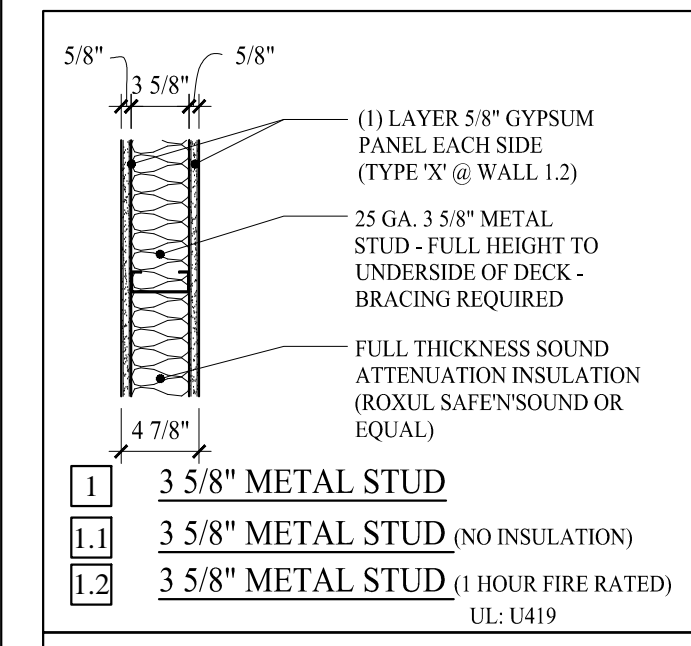
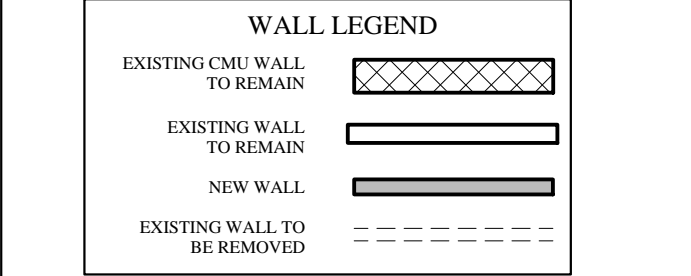


* INSTALL ALL MATERIALS PER MANUFACTURE REQUIREMENTS

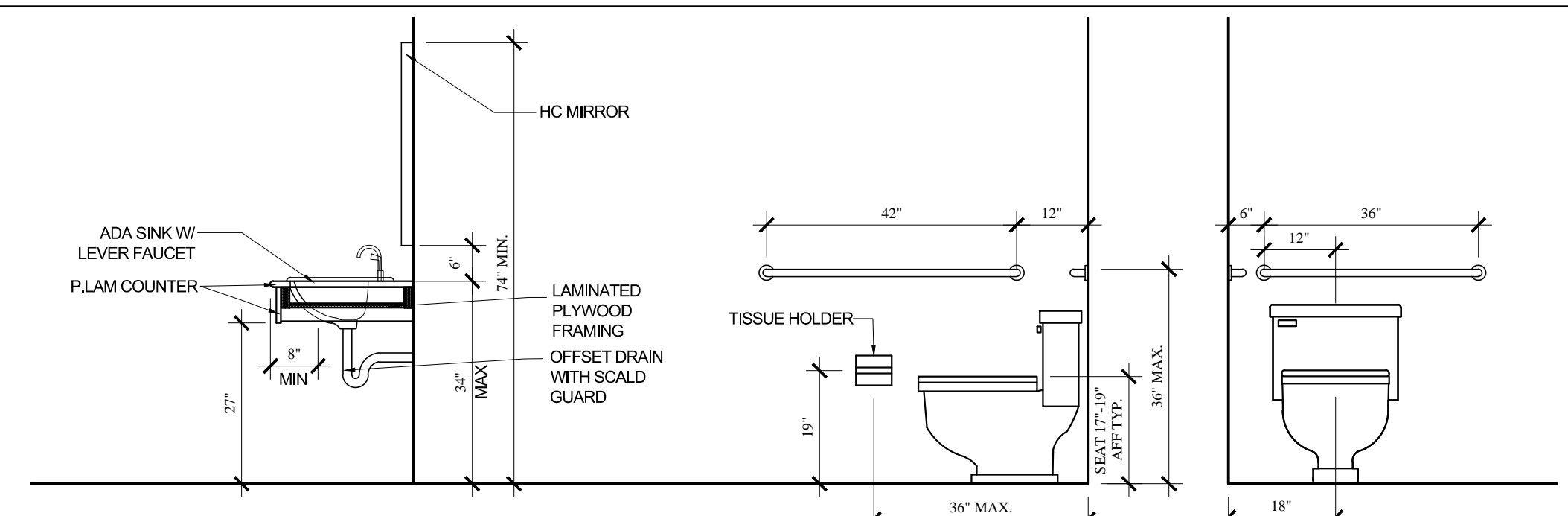


- DOOR NOTES:**
- 1 EXISTING DOOR TO REMAIN
 - 2 NEW DOOR, 3'-0" x 7'-0", ADA LEVER HARDWARE, CLOSER, KICK PLATE
 - 3 NEW DOOR, 3'-0" x 7'-0", ADA LEVER HARDWARE, NO CLOSER
 - 4 NEW DOOR, 3'-0" x 7'-0", PUSH/PULL HARDWARE, CLOSER, KICK PLATE
 - 5 NEW DOOR, 3'-0" x 7'-0", EXIT DEVICE HARDWARE, CLOSER, KICK PLATE

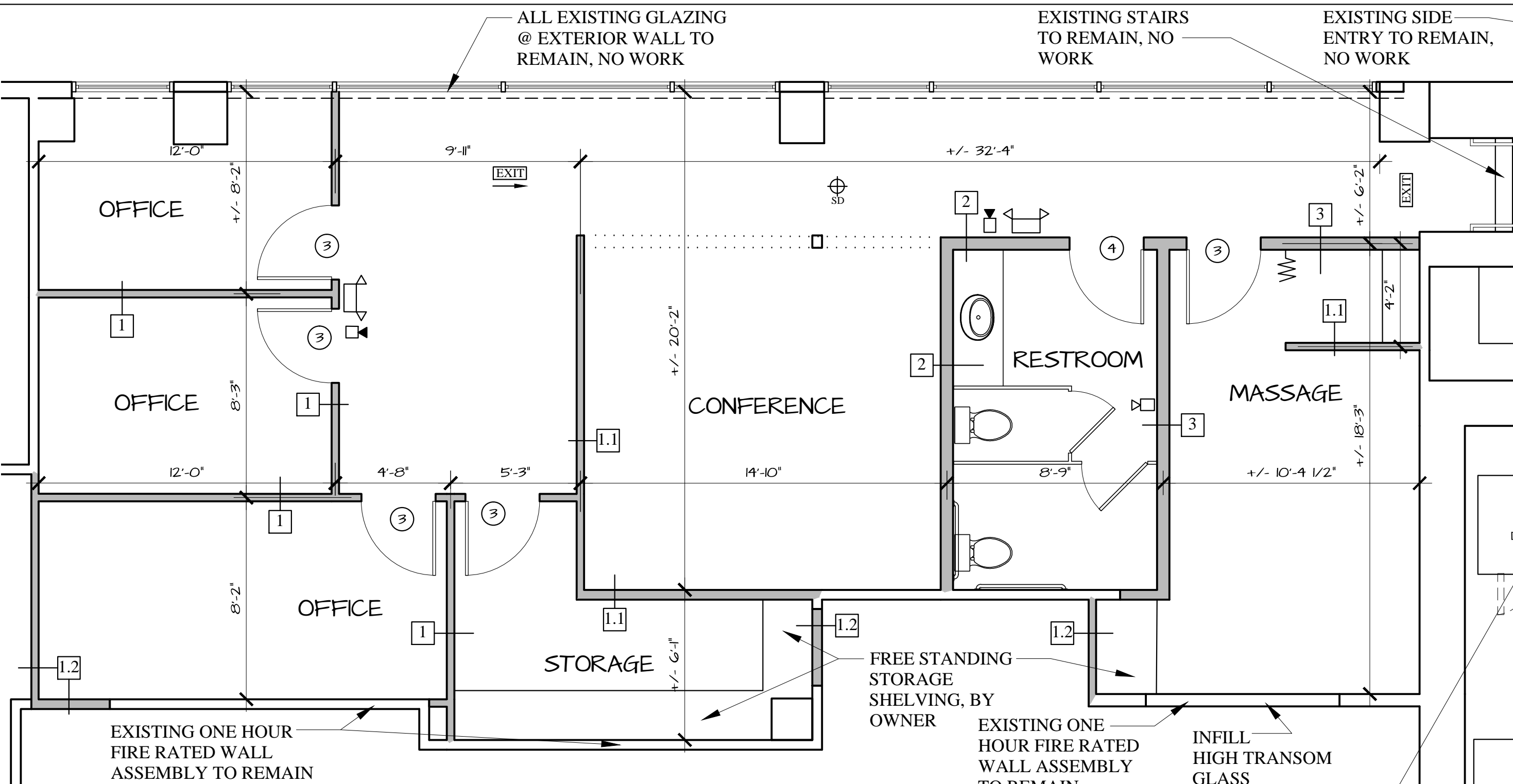
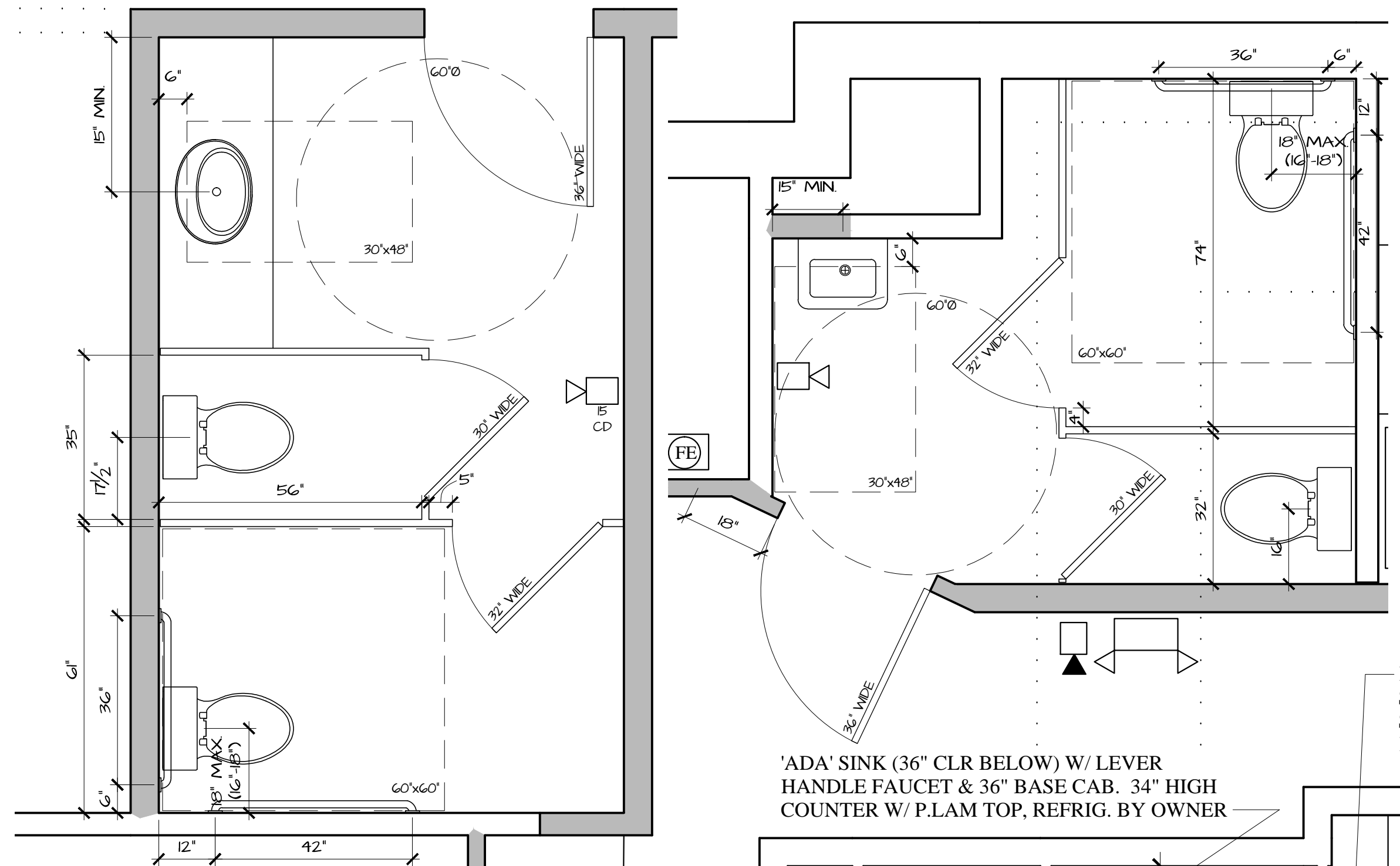
ALL DOORS SHALL BE KEYPED PER TENANT REQUIREMENTS
 ALL INTERIOR DOORS SHALL BE SOLID BIRCH, CLEAR SEAL
 ALL HARDWARE SHALL BE BRUSHED NICKEL FINISH
 ALL DOOR FRAMES SHALL BE PAINTED METAL KNOCK DOWN W/ SOUND SEALS



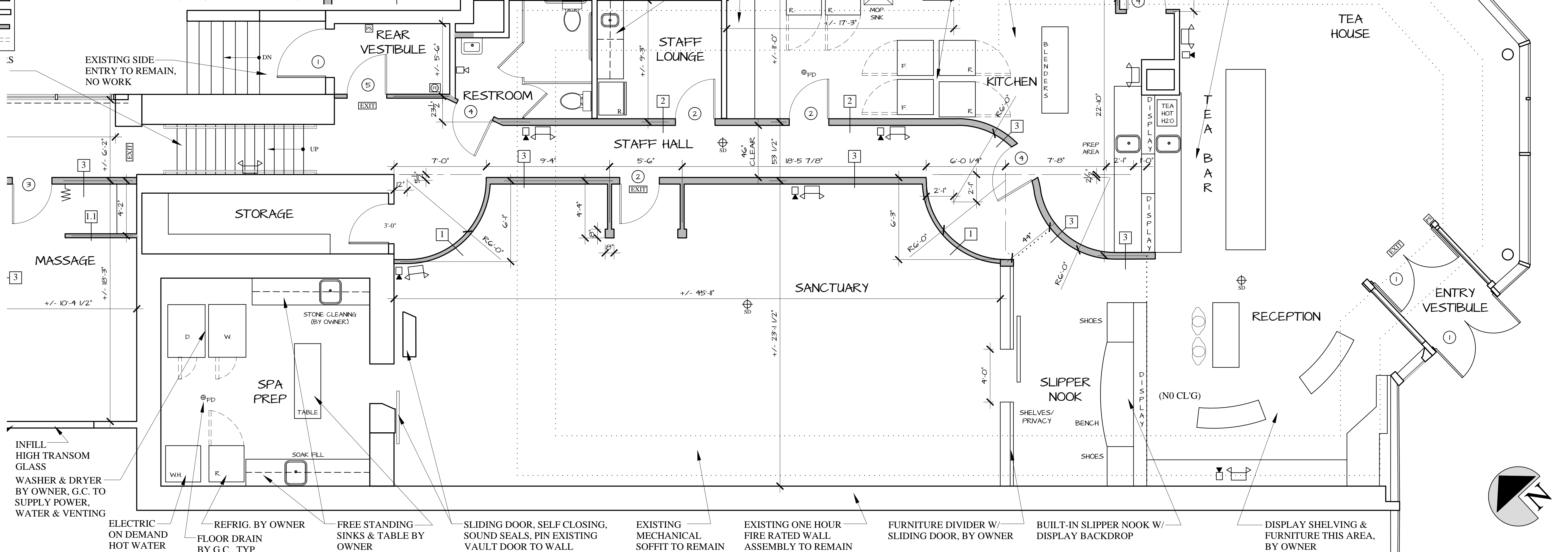
- LIFE SAFETY LEGEND:**
- EMERGENCY BACKUP LIGHT LOW PROFILE LED BATTER BACKUP @ SANCTUARY & TEAHOUSE
 - EXIT LIGHT TRANSPARENT HEAD TYPE @ SANCTUARY & TEAHOUSE
 - PHOTOCELL SMOKE DETECTOR
 - HEAT & CO DETECTOR
 - HORN/STROBE
 - STROBE
 - FIRE EXTINGUISHER IN RECESSED CABINET
 - FULL STATION SPRINKLER SYSTEM
- LIFE SAFETY NOTES:**
- LIFE SAFETY AND FIRE ALARM SYSTEMS SHALL BE DESIGNED AND INSTALLED PER NFPA 72, BY A CITY STATE APPROVED CONTRACTOR WITH A SEPARATE PERMIT.
 - ALL STROBES TO BE 30 CANDELA UNLESS OTHERWISE NOTED.
 - SYSTEM SHALL BE SUPERVISED BY AN OFF-SITE CERTIFIED BY THE CITY OF PORTLAND THIRD PARTY
 - EXISTING LIFE SAFETY SYSTEM SHALL REMAIN, TOP EACH SIDE



'ADA' RESTROOM PLANS & ELEVATIONS
 SCALE: 1/2"=1'-0"



PROPOSED FLOOR PLAN - UPPER LEVEL
 SCALE: 1/4"=1'-0"



PROPOSED FLOOR PLAN - LOWER LEVEL
 SCALE: 1/4"=1'-0"

MARK MUELLER ARCHITECTS
 A.I.A.
 100 Commercial Street
 Suite 205
 Portland, Maine 04101
 Phone: 207.774.9057
 Email: rfi@muellerarchitects.com

SOAKOLOGY
 511 CONGRESS STREET
 PORTLAND, MAINE 04101

FLOOR PLAN

REVISIONS

DATE: 01.26.2015

PROJECT: SOAKOLOGY

DRAWN BY: MAM

CHECK BY: MAM

PERMIT SET: MARCH 18, 2015

A-1.2