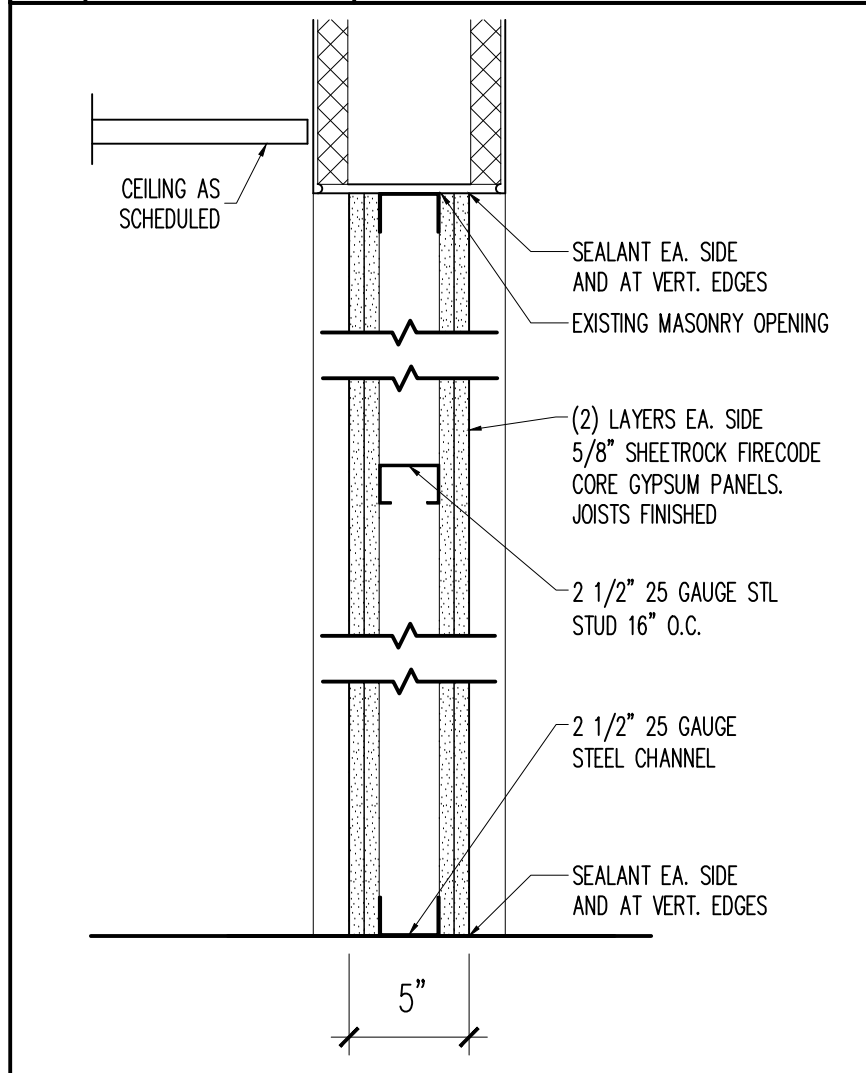


3 3"=1'-0" WALL TYPE 3



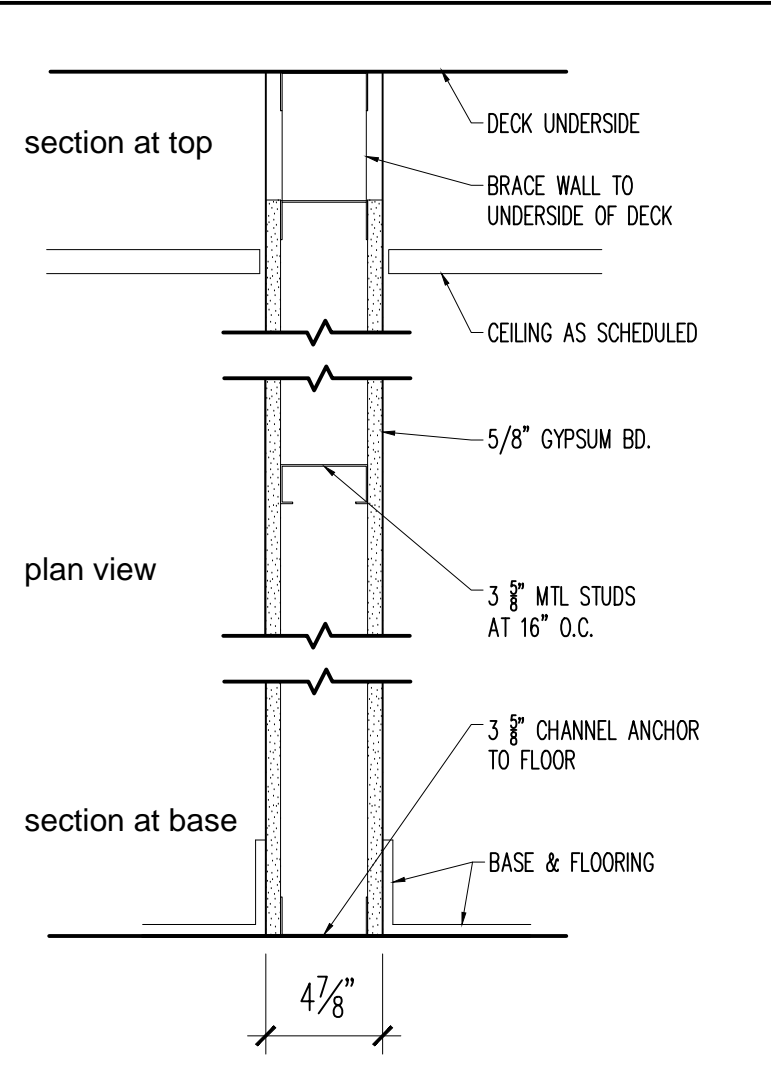
2 3"=1'-0" WALL TYPE 2

BUILDING CODE DATA

Current Codes Used for Code Information
 International Building Code 2009
 IBC Maine Amendment 2009
 International Energy Conservation Code 2009
 NFPA 101 2006

ADA Standards for Accessible Design 2010

REFL. CEILING PLAN SYMBOLS LEGEND	
	2'x2' RECESSED FLUORESCENT LIGHT FIXTURE
	2'x4' RECESSED FLUORESCENT LIGHT FIXTURE
	DIRECTIONAL EXIT LIGHT
	AUTOMATIC EMERGENCY LIGHT
	MANUAL PULL STATION



1 3"=1'-0" WALL TYPE 1

PROJECT
HONECK - O'TOOLE
 Office Renovation
 511 Congress Street, 9th Floor
 Portland, Maine 04101

Map: 00 Block: 00 Lot: 00

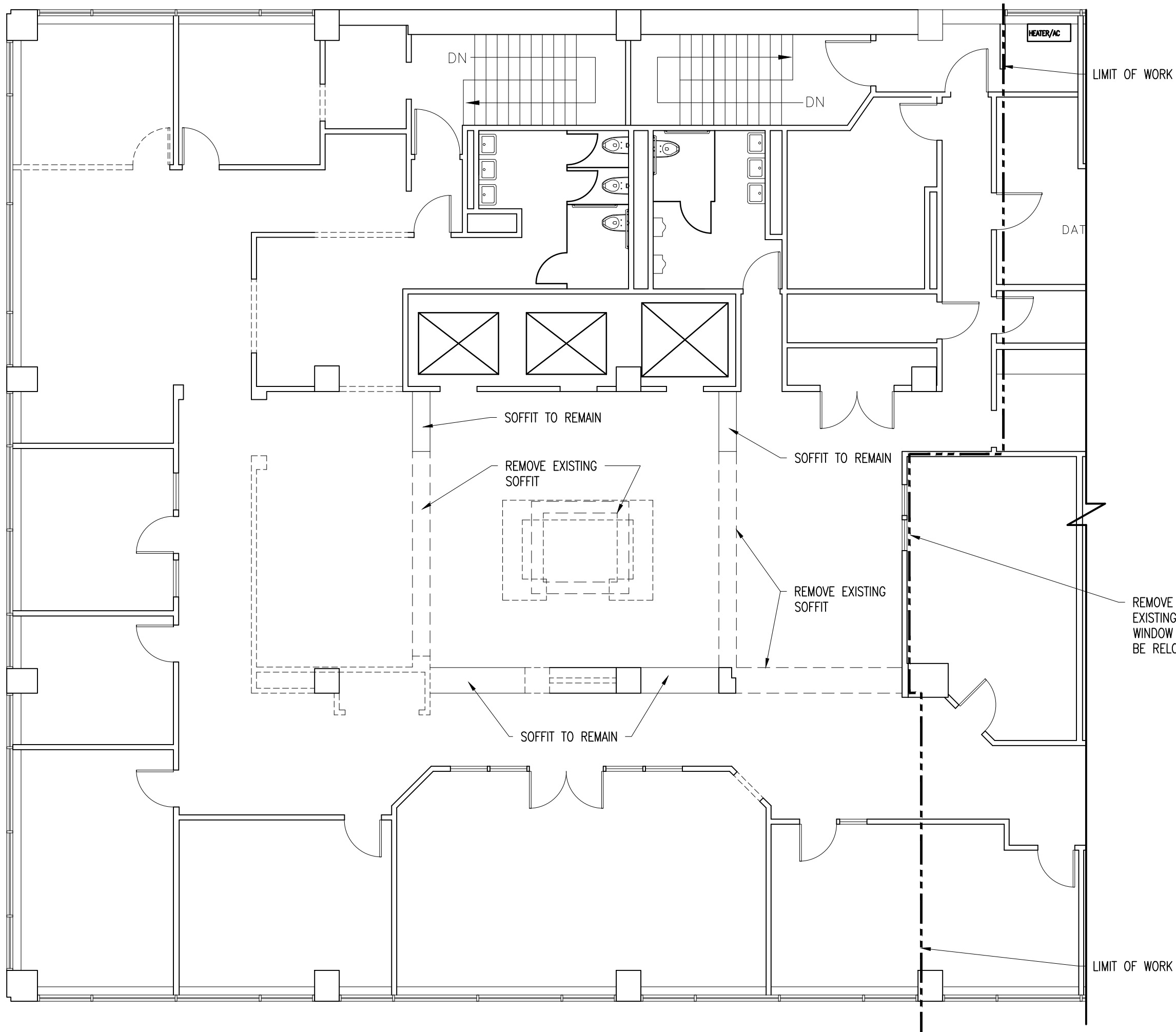
CLIENT
 511 Congress Street, LLC
 c/o CBRE | Boulos Property Management
 1 Canal Plaza, Suite 500
 Portland, ME 04101

INFORMATION
 Path: m:\boulos\H&O\
 Issue Date: 10.30.12
 Drawn By: DG
 Checked By: DG



TITLE
WALL TYPES AND SCHEDULES
 SCALE: 1/4"=1'-0"

©2012 Graham Architects All rights reserved. Information, material, and designs in this document are proprietary to and owned by Graham Architects and may not be disclosed to any third party, reproduced, posted on a global computer information network, or distributed in any way without the written consent from Graham Architects.



PROJECT
HONECK - O'TOOLE
Office Renovation
511 Congress Street, 9th Floor
Portland, Maine 04101

Map: 00 Block: 00 Lot: 00

CLIENT
511 Congress Street, LLC
c/o CBRE | Boulos Property Management
1 Canal Plaza, Suite 500
Portland, ME 04101

INFORMATION
Path: m:\boulos\H&O\
Issue Date: 10.30.12
Drawn By: DG
Checked By: DG

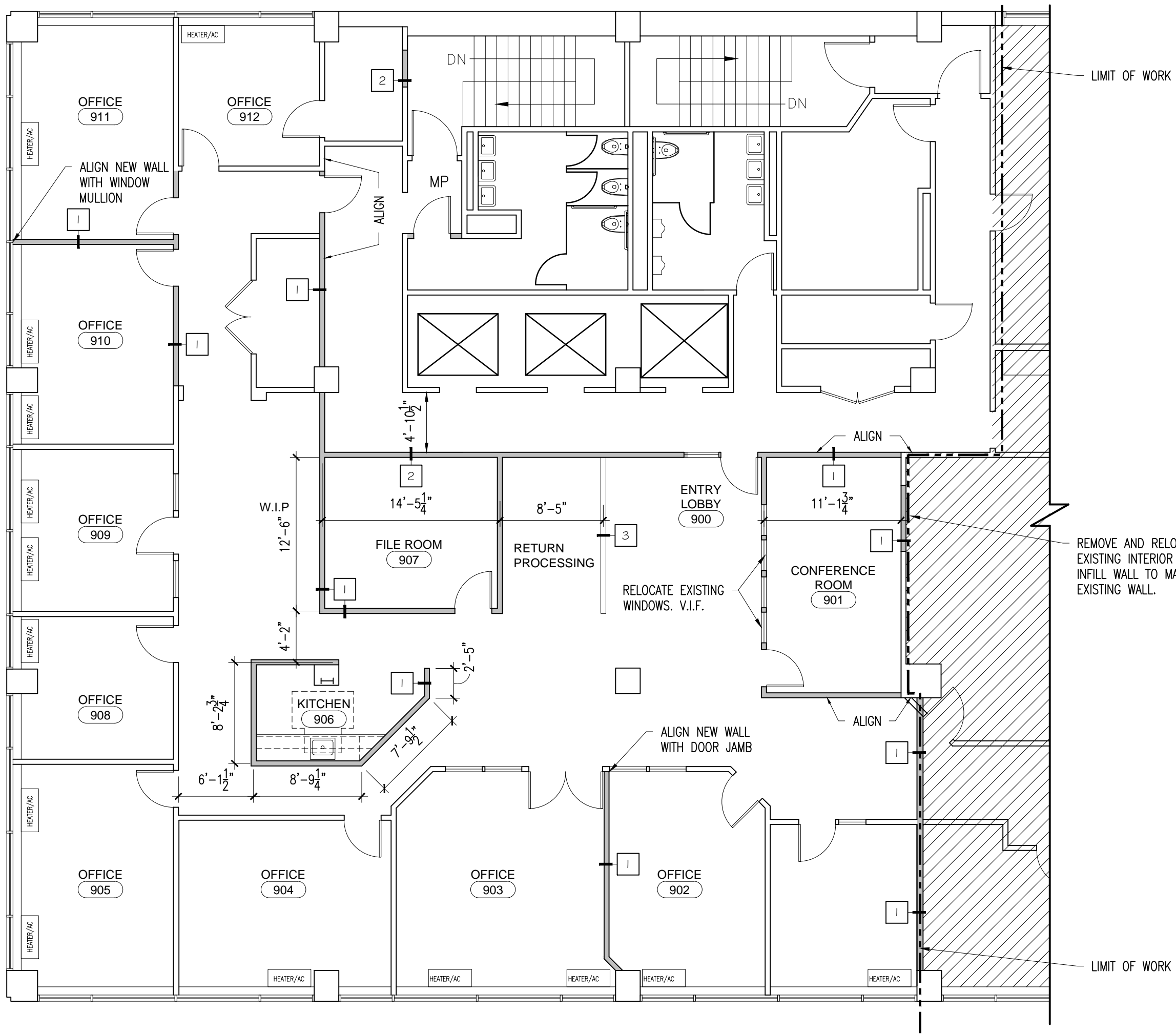


REMOVE AND STORE
EXISTING INTERIOR
WINDOW TO
BE RELOCATED

TITLE
DEMOLITION PLAN

SCALE: 1/8"=1'-0"

©2012 Graham Architects All rights reserved. Information, material, and designs in this document are proprietary to and owned by Graham Architects and may not be disclosed to any third party, reproduced, posted on a global computer information network, or distributed in any way without the written consent from Graham Architects.



PROJECT
HONECK - O'TOOLE
Office Renovation
 511 Congress Street, 9th Floor
 Portland, Maine 04101

Map: 00 Block: 00 Lot: 00

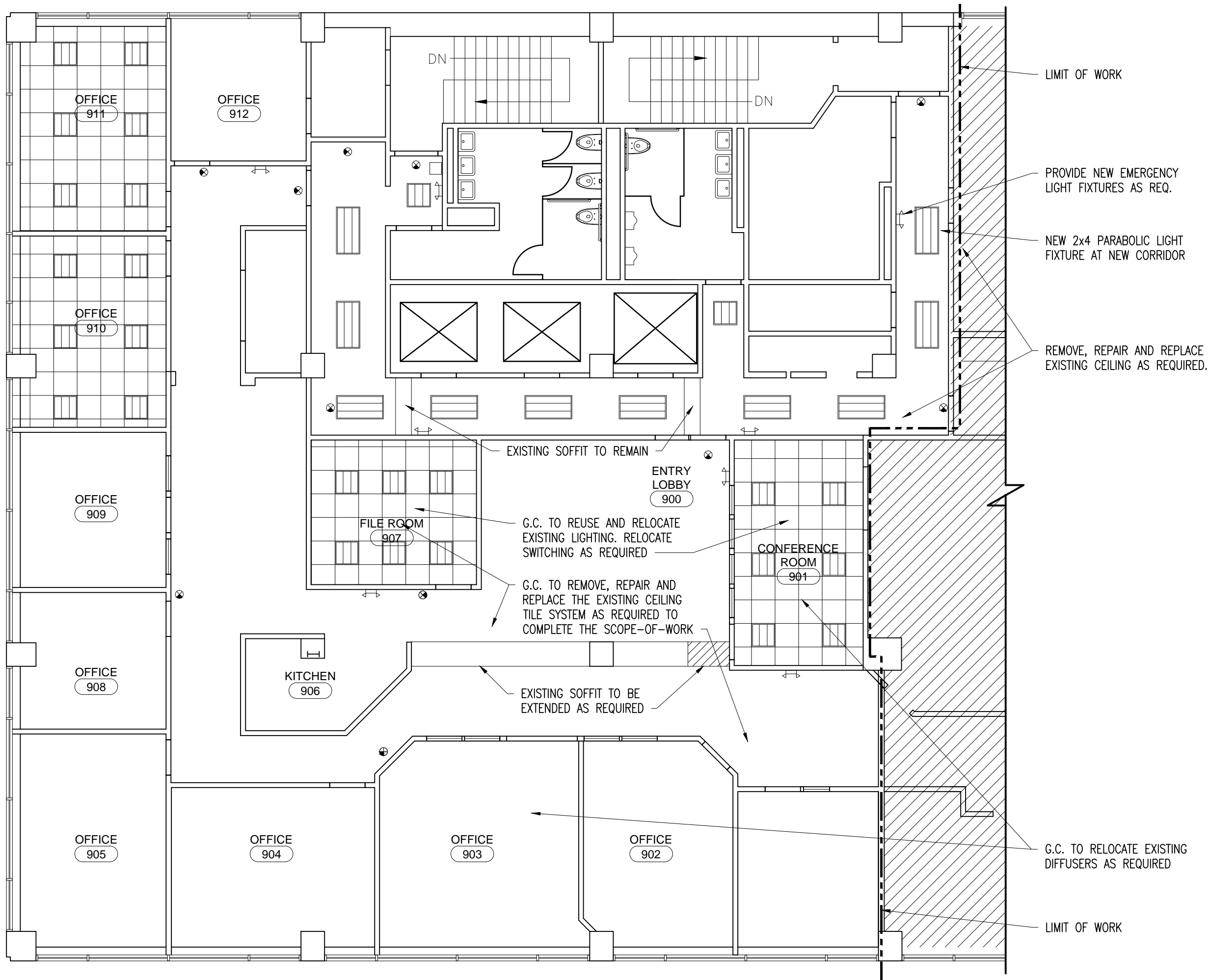
CLIENT
 511 Congress Street, LLC
 c/o CBRE | Boulos Property Management
 1 Canal Plaza, Suite 500
 Portland, ME 04101

INFORMATION
 Path: m:\boulos\H&O\
 Issue Date: 10.30.12
 Drawn By: DG
 Checked By: DG



TITLE
PROPOSED FLOOR PLAN
 SCALE: 1/8"=1'-0"

©2012 Graham Architects All rights reserved. Information, material, and designs in this document are proprietary to and owned by Graham Architects and may not be disclosed to any third party, reproduced, posted on a global computer information network, or distributed in any way without the written consent from Graham Architects.



PROJECT
HONECK - O'TOOLE
Office Renovation
511 Congress Street, 9th Floor
Portland, Maine 04101

Map: 00 Block: 00 Lot: 00

CLIENT
511 Congress Street, LLC
c/o CBRE | Boulos Property Management
1 Canal Plaza, Suite 500
Portland, ME 04101

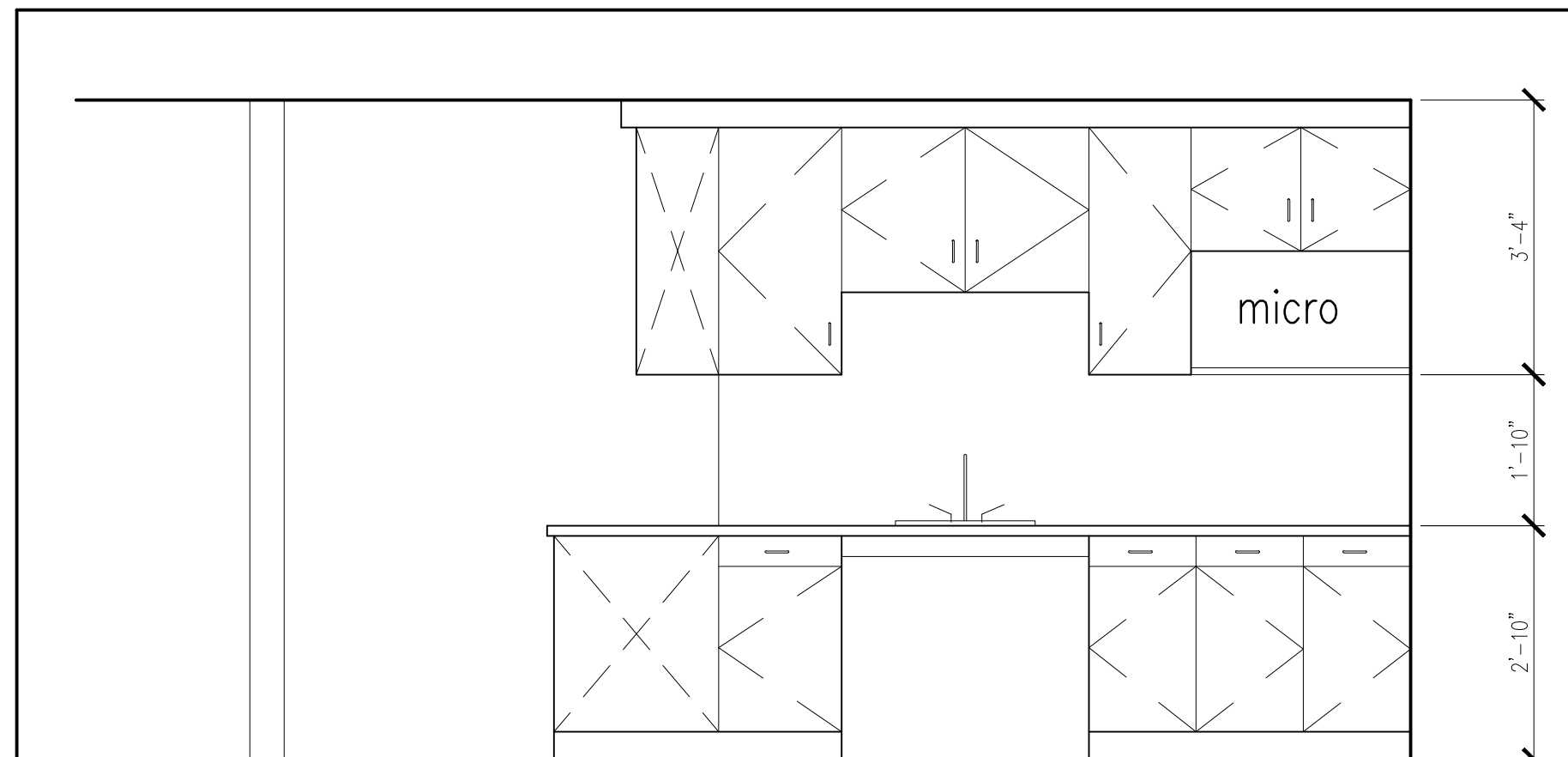
INFORMATION
Path: m:\boulos\H&O\
Issue Date: 10.30.12
Drawn By: DG
Checked By: DG



TITLE
INTERIOR ELEVATION

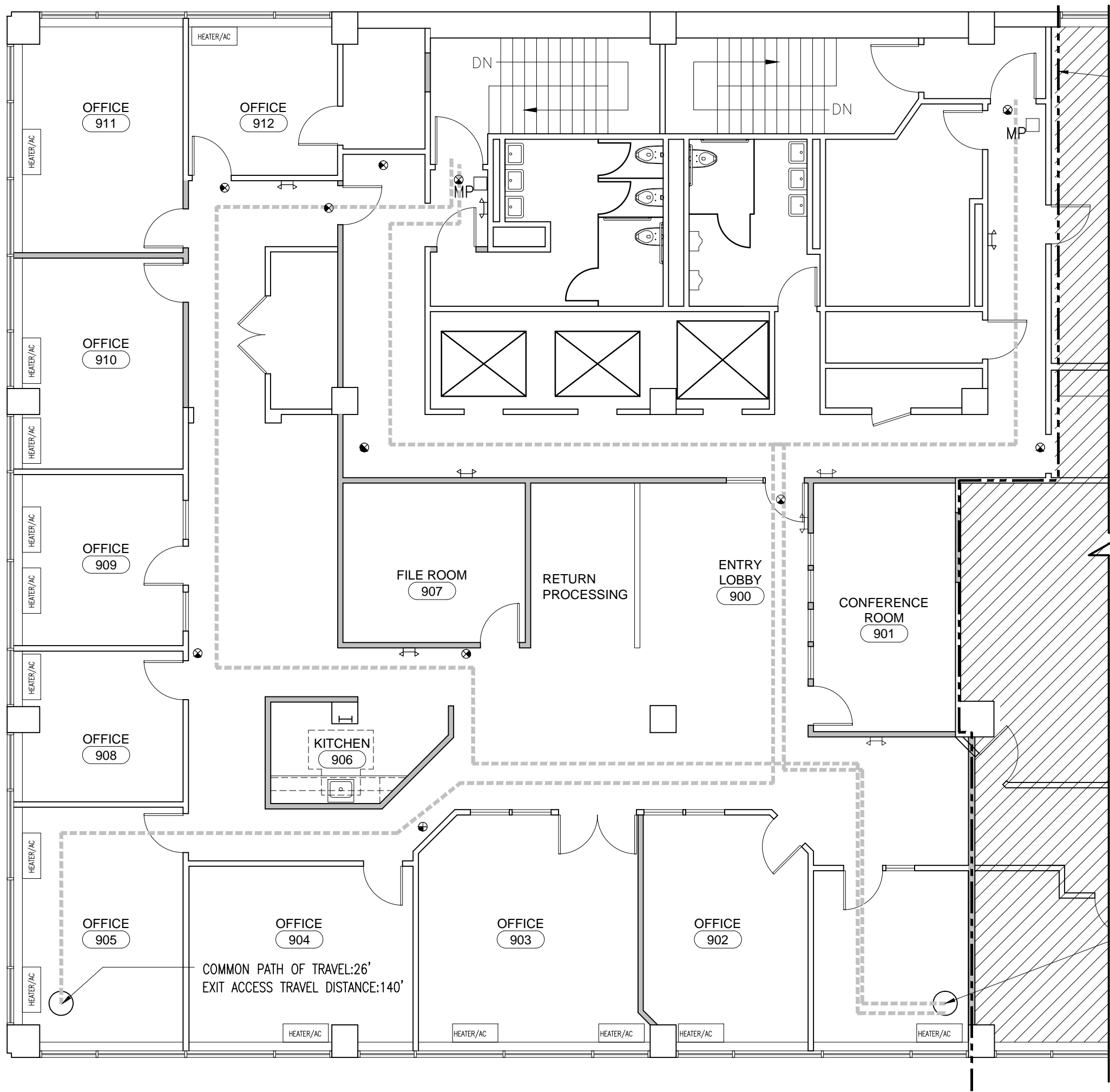
SCALE: 1/2"=1'-0"

©2012 Graham Architects All rights reserved. Information, material, and designs in this document are proprietary to and owned by Graham Architects and may not be disclosed to any third party, reproduced, posted on a global computer information network, or distributed in any way without the written consent from Graham Architects.



1 1/2"=1'-0" KITCHEN ELEVATION

A1.4



PROJECT
HONECK - O'TOOLE
Office Renovation
 511 Congress Street, 9th Floor
 Portland, Maine 04101

Map: 00 Block: 00 Lot: 00

CLIENT
 511 Congress Street, LLC
 c/o CBRE | Boulos Property Management
 1 Canal Plaza, Suite 500
 Portland, ME 04101

INFORMATION
 Path: m:\boulos\H&O\
 Issue Date: 10.30.12
 Drawn By: DG
 Checked By: DG



TITLE
EGRESS PLAN

SCALE: 1/8"=1'-0"

©2012 Graham Architects All rights reserved. Information, material, and designs in this document are proprietary to and owned by Graham Architects and may not be disclosed to any third party, reproduced, posted on a global computer information network, or distributed in any way without the written consent from Graham Architects.