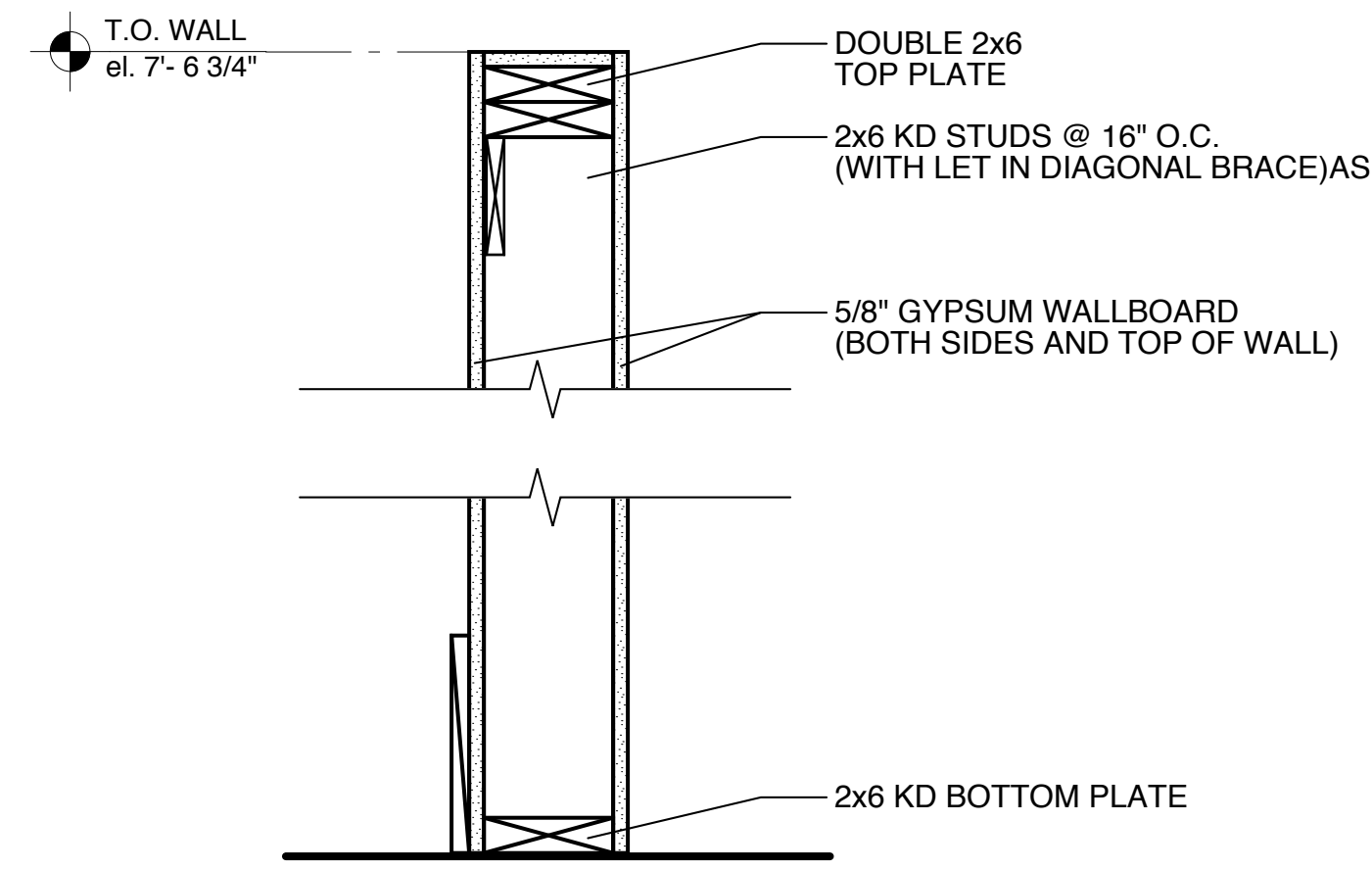
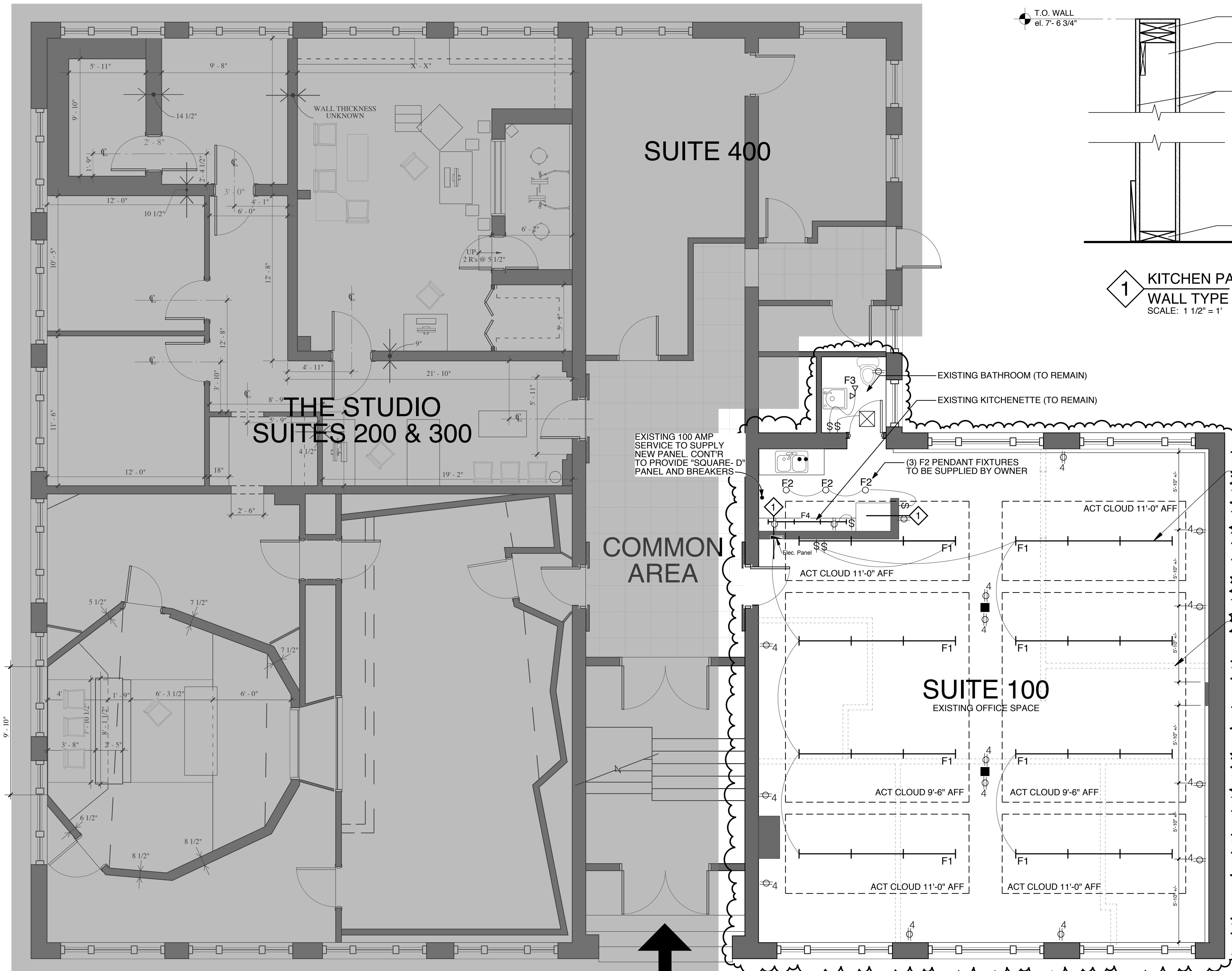


CUMBERLAND AVENUE



1 KITCHEN PARTITION WALL TYPE
SCALE: 1 1/2" = 1'

AREA OF WORK

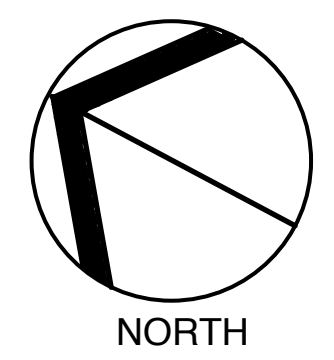
SUSPENDED 12' LONG FLOURESCENT FIXTURES. (2) T830 LAMPS PER 4'. TO BE PROVIDED BY OWNER. (TYPICAL OF 8)

SURFACE MOUNTED GALVANIZED ELECTRICAL BOXES AND CONDUITS. (TYPICAL THOUGHOUT SUITE 100.)

REMOVAL OF EXISTING OFFICE PARTITIONS

PROJECT DESCRIPTION

- 1) THIS PROJECT INVOLVES THE REMOVAL OF EXISTING OFFICE PARTITIONS, WITH REMOVAL AND REPLACEMENT OF ACOUSTIC CEILING.
- 2) THE EXISTING KITCHENETTE AND BATHROOMS WILL RECEIVE NEW FIXTURES AND CABINETS
- 3) REMOVAL AND REPLACEMENT OF ALL EXISTING ELECTRICAL CIRCUITS AND 100 AMP SERVICE PANEL. INSTALL NEW SUSPENDED FLOURESCENT LIGHT FIXTURES AND PENDANTS AS INDICATED.
- 4) DISCONNECT AND RECONNECT EXISTING HVAC DUCTED SYSTEM TO NEW CEILING GRILLS. THUS CREATING AN OPEN OFFICE SPACE WITH NEW UPDATED ELECTRICAL SERVICE



CASCO STREET

ENTRY

<p>ARCHITECTURE & INTERIORS 45 CASCO STREET PORTLAND, MAINE 04101 207.699.2688 TEL 207.699.2611 FAX davidhembrearchitect.com</p>		
<p>SUITE 100</p> <p>45 CASCO STREET PORTLAND, MAINE 04103</p>	<p>FIRST FLOOR PLAN</p> <p>SCALE: 1/4"=1'-0"</p>	<p>A1</p> <p>DRAWING NO.</p>
<p>ISSUED FOR:</p>	<p>DATE</p>	<p>ISSUED FOR PERMIT</p>
<p>12/21/12</p>		