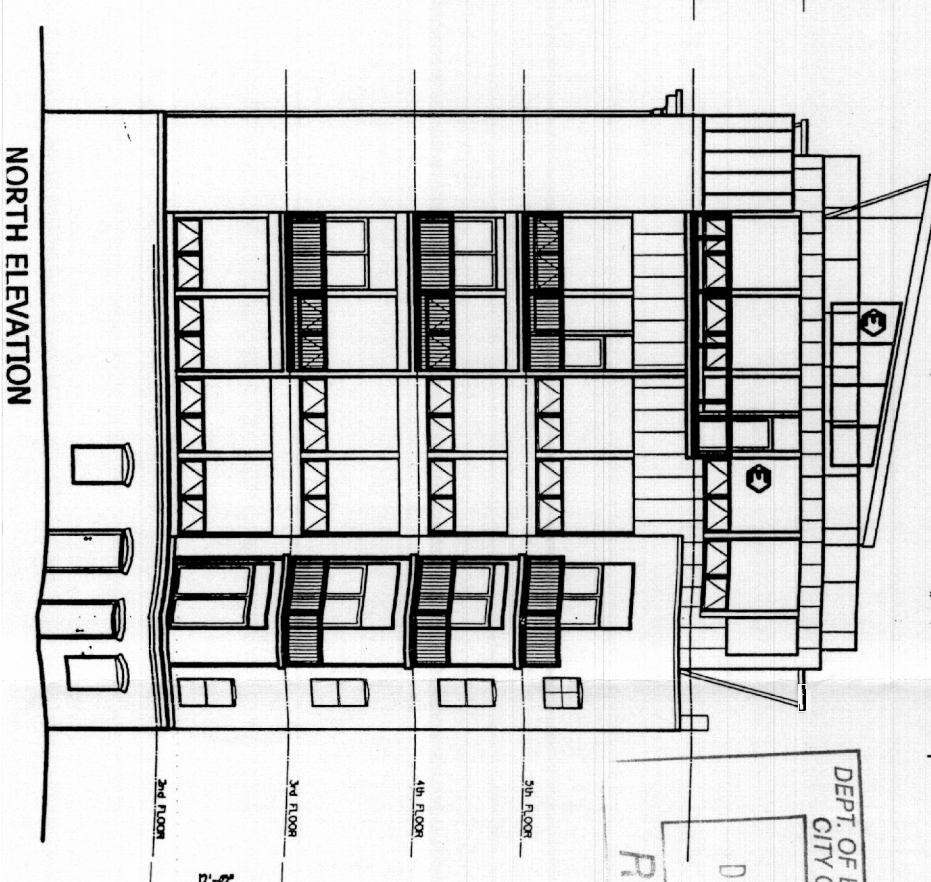
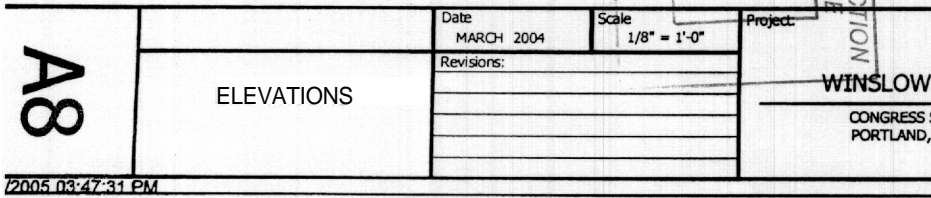


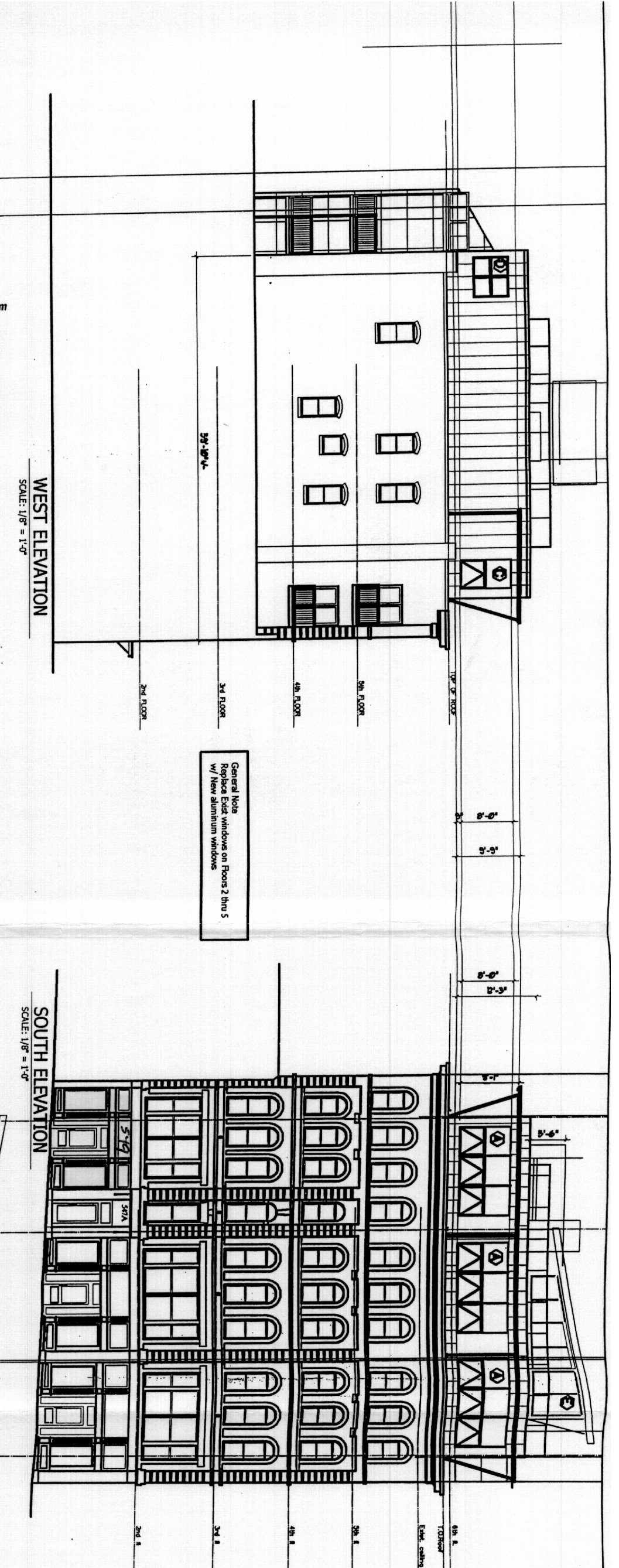
WEST ELEVATION
SCALE: 1/8" = 1'-0"



SOUTH ELEVATION
SCALE: 1/8" = 1'-0"



NORTH ELEVATION



EAST ELEVATION
SCALE: 1/8" = 1'-0"

General Note
Replace Exis windows on Floors 2 thru 5
w/ New aluminum windows

RECEIVED
DEC - 8 2005
DEPT. OF BUILDING INSPECTION
CITY OF PORTLAND, ME

ELEVATIONS	Date MARCH 2004	Scale 1/8" = 1'-0"	Project WINSLOW LOFTS CONGRESS STREET PORTLAND, MAINE	ARCHETYPE, P.A. ARCHITECTS 48 Union Wharf Portland, Maine 04101 (207) 772-6022 Fax (207) 772-4056	OWNER:
	Revisions:				

A8