

HOOD INFORMATION - Job#1891896

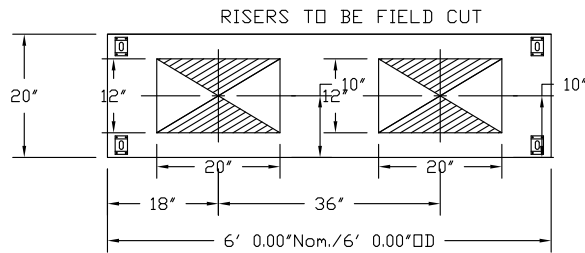
| HOOD NO. | TAG | MODEL | LENGTH | MAX. COOKING TEMP. | EXHAUST PLENUM RISER(S) | | | | | TOTAL SUPPLY CFM | HOOD CONSTRUCTION | HOOD CONFIG. | |
|----------|-----------------|--------------|----------|--------------------|-------------------------|-------|-------|------|-----|------------------|-------------------|--------------|------------|
| | | | | | TOTAL EXH. CFM | WIDTH | LENG. | DIA. | CFM | | | S.P. | END TO END |
| 1 | 20" Wide Supply | 206 MISC-PSP | 6' 0.00" | 300 Deg. | 0 | | | | | 1050 | 430 SS 100% | ALONE | ALONE |

HOOD INFORMATION

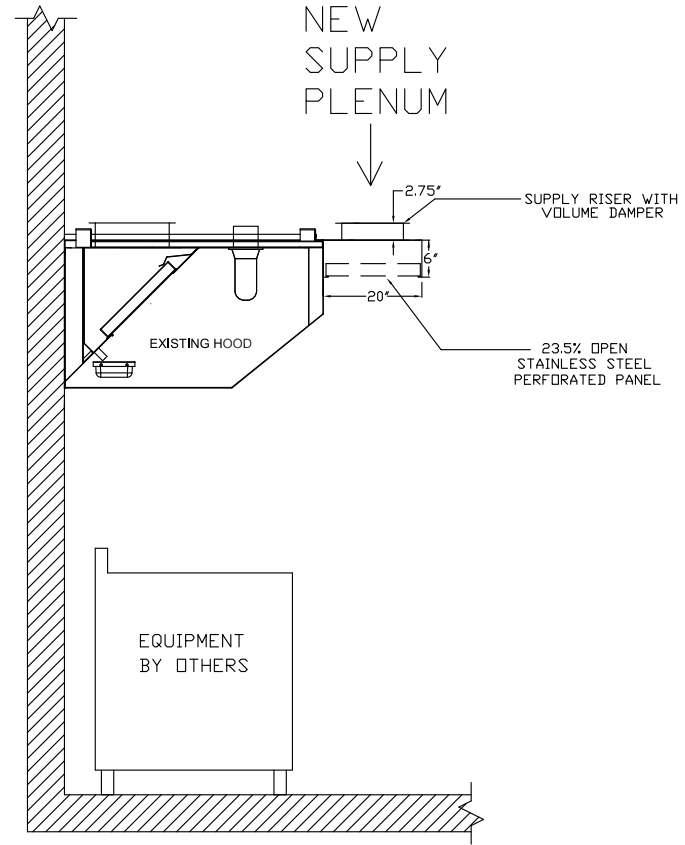
| HOOD NO. | TAG | FILTER(S) | | | | LIGHT(S) | | | | UTILITY CABINET(S) | | | | FIRE SYSTEM PIPING | HOOD HANGING WGT |
|----------|-----------------|-----------|------|--------|--------|----------|------|------------|----------|--------------------|------|--------------------|-------------------|--------------------|------------------|
| | | TYPE | QTY. | HEIGHT | LENGTH | QTY. | TYPE | WIRE GUARD | LOCATION | FIRE SYSTEM TYPE | SIZE | ELECTRICAL MODEL # | SWITCHES QUANTITY | | |
| 1 | 20" Wide Supply | | | | | 0 | | | | | | | | NO | 74 LBS |

PERFORATED SUPPLY PLENUM(S)

| HOOD NO. | TAG | POS. | LENGTH | WIDTH | HEIGHT | TYPE | RISER(S) | | | | |
|----------|-----------------|-------|--------|-------|--------|------|----------|-------|------|-----|--------|
| | | | | | | | WIDTH | LENG. | DIA. | CFM | S.P. |
| 1 | 20" Wide Supply | Front | 72" | 20" | 6" | MUA | 12" | 20" | | 525 | 0.151' |
| | | | | | | MUA | 12" | 20" | | 525 | 0.151' |



PLAN VIEW - Hood #1 (20" Wide Supply)
6' 0.00" LONG 206MISC-PSP



SECTION VIEW - EXISTING HOOD WITH NEW PSP ACCESSORY

CUSTOMER APPROVAL TO MANUFACTURE:

Approved as Noted

Approved with NO Exception Taken

Revise and Resubmit

SIGNATURE _____

Your Title _____ Date _____



CAPTIVEAIRE

| | |
|--------------------------|--------------------|
| JOB West End Deli | |
| LOCATION SCARBOROUGH, ME | |
| DATE 12/4/2013 | JOB # 1891896 |
| DWG # 1 | DRAWN BY BFC-21 |
| REV. | SCALE 3/8" = 1'-0" |

EXHAUST FAN INFORMATION - Job#1891896

| FAN UNIT NO. | TAG | FAN UNIT MODEL # | CFM | ESP. | RPM | H.P. | Ø | VOLT | FLA | WEIGHT (LBS.) | SONES |
|--------------|-----|------------------|------|-------|------|-------|---|------|------|---------------|-------|
| 1 | | NCA14FA | 1500 | 1.000 | 1139 | 0.750 | 1 | 115 | 11.0 | 150 | 12.8 |

MUA FAN INFORMATION - Job#1891896

| FAN UNIT NO. | TAG | FAN UNIT MODEL # | BLOWER | HOUSING | CFM | ESP. | RPM | H.P. | Ø | VOLT | FLA | WEIGHT (LBS.) | SONES |
|--------------|-----|------------------|--------|---------|------|-------|-----|-------|---|------|-----|---------------|-------|
| 2 | | A1-G10 | G10D | A1 | 1050 | 0.300 | 664 | 0.500 | 1 | 115 | 6.8 | 214 | 11.3 |

FAN OPTIONS

| FAN UNIT NO. | TAG | OPTION (Qty. - Descr.) |
|--------------|-----|---|
| 1 | | 1 - Grease Box |
| | | 1 - Fan Base Ceramic Seal - For Grease Ducts |
| | | 1 - Hinge Kit - Ships Loose for Curb Supplied by Others |
| 2 | | 1 - Gravity Backdraft Damper for Size 1 Housing |

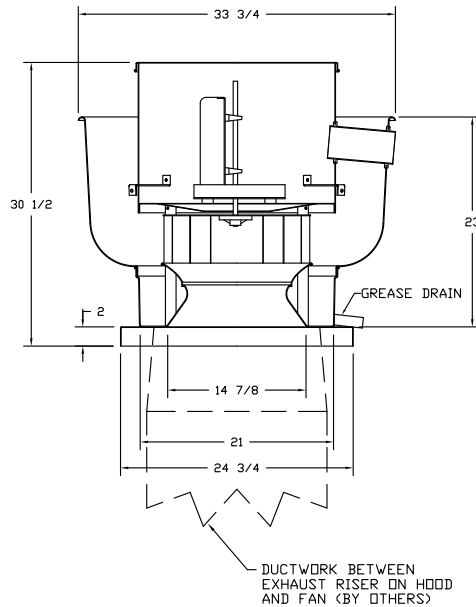
CURB ASSEMBLIES

| NO. | ON FAN | WEIGHT | ITEM | SIZE |
|-----|--------|--------|------|--------------------------------|
| 2 | # 2 | 29 LBS | Curb | 21.000"W x 21.000"L x 20.000"H |

FAN ACCESSORIES

| FAN UNIT NO. | TAG | EXHAUST | | | SUPPLY | | | |
|--------------|-----|------------|----------------|------------|----------------|----------------|------------------|------------|
| | | GREASE CUP | GRAVITY DAMPER | WALL MOUNT | SIDE DISCHARGE | GRAVITY DAMPER | MOTORIZED DAMPER | WALL MOUNT |
| 1 | | YES | | | | | | |
| 2 | | | | | | YES | | |

FAN #1 NCA14FA - EXHAUST FAN



FEATURES:

- ROOF MOUNTED FANS
- RESTAURANT MODEL
- UL705 AND UL762
- AMCA SOUND AND AIR CERTIFIED
- WIRING FROM MOTOR TO DISCONNECT SWITCH
- WEATHERPROOF DISCONNECT
- HIGH HEAT OPERATION 300°F (149°C)
- GREASE CLASSIFICATION TESTING

NORMAL TEMPERATURE TEST
EXHAUST FAN MUST OPERATE CONTINUOUSLY WHILE EXHAUSTING AIR AT 300°F (149°C) UNTIL ALL FAN PARTS HAVE REACHED THERMAL EQUILIBRIUM, AND WITHOUT ANY DETERIORATING EFFECTS TO THE FAN WHICH WOULD CAUSE UNSAFE OPERATION.

ABNORMAL FLARE-UP TEST
EXHAUST FAN MUST OPERATE CONTINUOUSLY WHILE EXHAUSTING BURNING GREASE VAPORS AT 600°F (316°C) FOR A PERIOD OF 15 MINUTES WITHOUT THE FAN BECOMING DAMAGED TO ANY EXTENT THAT COULD CAUSE AN UNSAFE CONDITION.

OPTIONS

- GREASE BOX
- FAN BASE CERAMIC SEAL - FOR GREASE DUCTS
- HINGE KIT - SHIPS LOOSE FOR CURB SUPPLIED BY OTHERS

CUSTOMER APPROVAL TO MANUFACTURE:

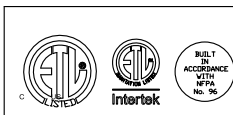
Approved as Noted

Approved with NO Exception Taken

Revise and Resubmit

SIGNATURE _____

Your Title _____ Date _____

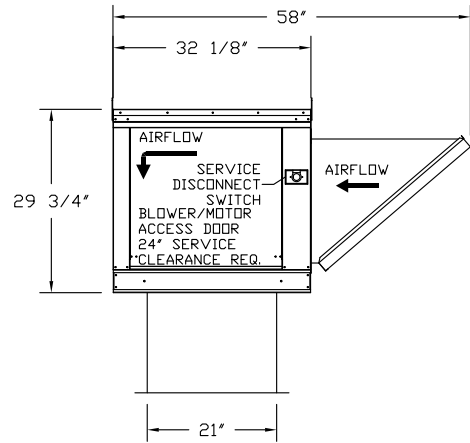
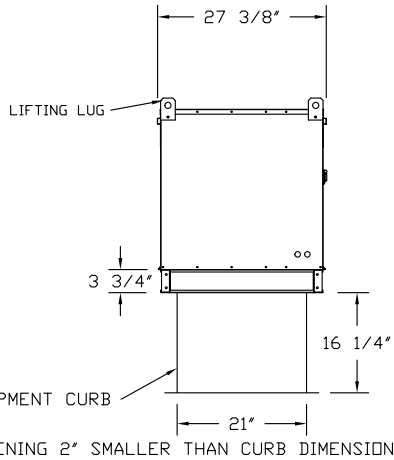
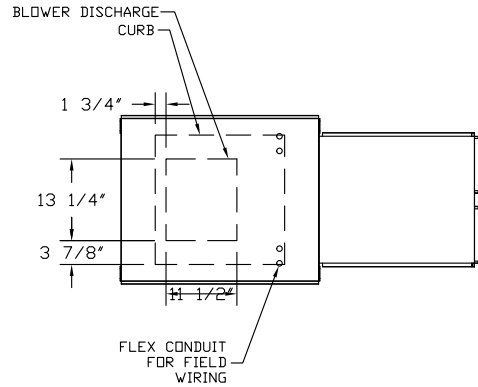


CAPTIVEAIRE

| | |
|--------------------------|--------------------|
| JOB West End Deli | |
| LOCATION SCARBOROUGH, ME | |
| DATE 12/4/2013 | JOB # 1891896 |
| DWG # 2 | DRAWN BY BFC-21 |
| REV. | SCALE 3/8" = 1'-0" |

FAN #2 A1-G10 - SUPPLY FAN

1. DIRECT DRIVE DIRECT DRIVE UNTEMPERED SUPPLY UNIT WITH 10" BLOWER IN SIZE #1 HOUSING WITH SPEED CONTROL, DISCONNECT SWITCH.
2. INTAKE HOOD WITH EZ FILTERS-LOW CFM
3. DOWN DISCHARGE - AIR FLOW RIGHT -> LEFT
4. GRAVITY BACK DRAFT DAMPER, 16" WIDE X 18" HIGH, STANDARD GALVANIZED CONSTRUCTION, 1 1/4" REAR FLANGE, FOR SIZE 1 UNTEMPERED FAN HOUSING (5181)



CUSTOMER APPROVAL TO MANUFACTURE:

Approved as Noted

Approved with NO Exception Taken

Revise and Resubmit

SIGNATURE _____

Your Title _____ Date _____



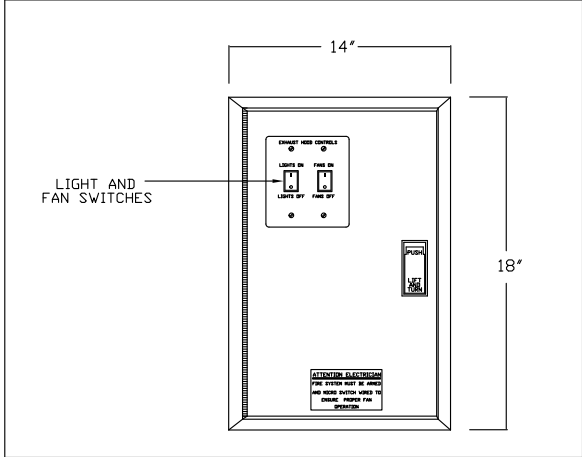
CAPTIVEAIRE

| | |
|--------------------------|--------------------|
| JOB West End Deli | |
| LOCATION SCARBOROUGH, ME | |
| DATE 12/4/2013 | JOB # 1891896 |
| DWG # 3 | DRAWN BY BFC-21 |
| REV. | SCALE 3/8" = 1'-0" |

ELECTRICAL PACKAGES - Job#1891896

| NO. | TAG | PACKAGE # | LOCATION | SWITCHES | | OPTION | FANS CONTROLLED | | | | |
|-----|-----|-----------|----------------------|-------------------|------------------|-----------------|-----------------|---|-------|------|------|
| | | | | LOCATION | QUANTITY | | TYPE | Ø | H.P. | VOLT | FLA |
| 1 | | 11111002 | Wall Mount In SS Box | SS Wall Mount Box | 1 Light 1 Fan | Exhaust in Fire | Exhaust | 1 | 0.750 | 115 | 11.0 |
| | | | | | | | Supply | 1 | 0.500 | 115 | 6.8 |

DETAIL OF REMOTE S/S BOX



CUSTOMER APPROVAL TO MANUFACTURE:

Approved as Noted

Approved with NO Exception Taken

Revise and Resubmit

SIGNATURE _____

Your Title _____ Date _____







| | |
|--------------------------|--------------------|
| JOB West End Deli | |
| LOCATION SCARBOROUGH, ME | |
| DATE 12/4/2013 | JOB # 1891896 |
| DWG # 4 | DRAWN BY BFC-21 |
| REV. | SCALE 3/8" = 1'-0" |

Exhaust Fan Wiring

JOB 1891896 - West End Deli

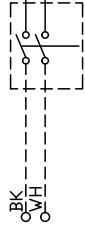
DRAWING NUMBER EXH1891896-1

SHIP DATE 12/4/2013

MODEL NCA14FA

Installed Options

1



Component Identification
 Label Description Location
 MT-01 Fan Motor [2]

SW-01 Main disconnect switch [2]

2

3

4

5

6

7

8

9

10

11

12

13

14

15

16

17

18

19

20

21

22

23

MOTOR INFO
 EXHAUST 0.75HP-115V-1P-11.0FLA

ELECTRICAL INFORMATION
 MOTOR CONTROL MCP: 138A
 MOTOR/CONTROL MCF: 20A

NOTES
 - - - - DENOTES FIELD WIRING
 _____ DENOTES INTERNAL WIRING

WIRE COLOR

BK - BLACK YW - YELLOW
 BL - BLUE GR - GREEN
 BR - BROWN GY - GRAY
 OR - ORANGE PR - PURPLE
 RD - RED PK - PINK
 WH - WHITE

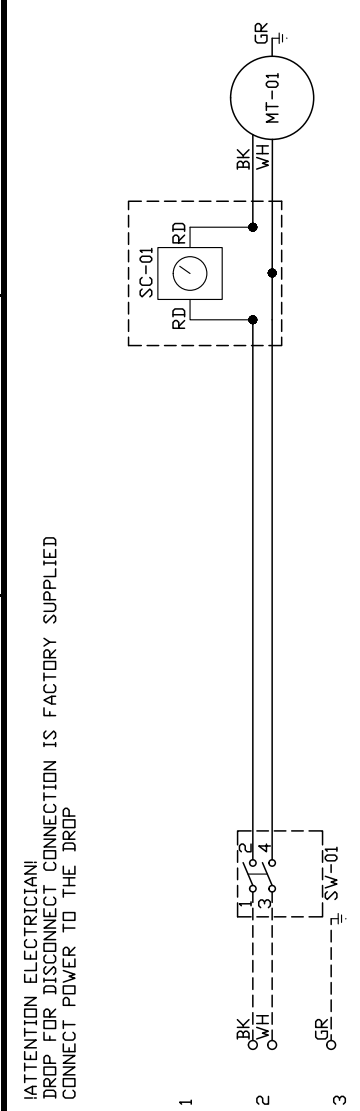
AirHandler Wiring

JOB 1891896 - West End Deli

DRAWING NUMBER A1891896-2

SHIP DATE 12/4/2013

MODEL A1-G10



Installed Options

| Label | Component Identification | Location |
|-------|--------------------------|----------|
| MT-01 | Supply motor | [20] |
| SC-01 | Speed Control | [10] |
| SW-01 | Main disconnect switch | [20] |

MOTOR INFO
 SUPPLY 0.5HP-115V-1P-6.8FLA

ELECTRICAL INFORMATION
 MOTOR/CONTROL CIRCUIT MOP: 8.5A
 MOTOR/CONTROL CIRCUIT MOP: 15A

NOTES
 - - - - DENOTES FIELD WIRING
 _____ DENOTES INTERNAL WIRING

WIRE COLOR
 BK - BLACK YW - YELLOW
 BL - BLUE GR - GREEN
 BR - BROWN GY - GRAY
 OR - ORANGE PR - PURPLE
 RD - RED PK - PINK
 WH - WHITE

- 1
- 2
- 3
- 4
- 5
- 6
- 7
- 8
- 9
- 10
- 11
- 12
- 13
- 14
- 15
- 16
- 17
- 18
- 19
- 20
- 21
- 22
- 23

ELECTRICAL PREWIRE PACKAGE

JOB NAME *West End Deli*

DATE 12/4/2013

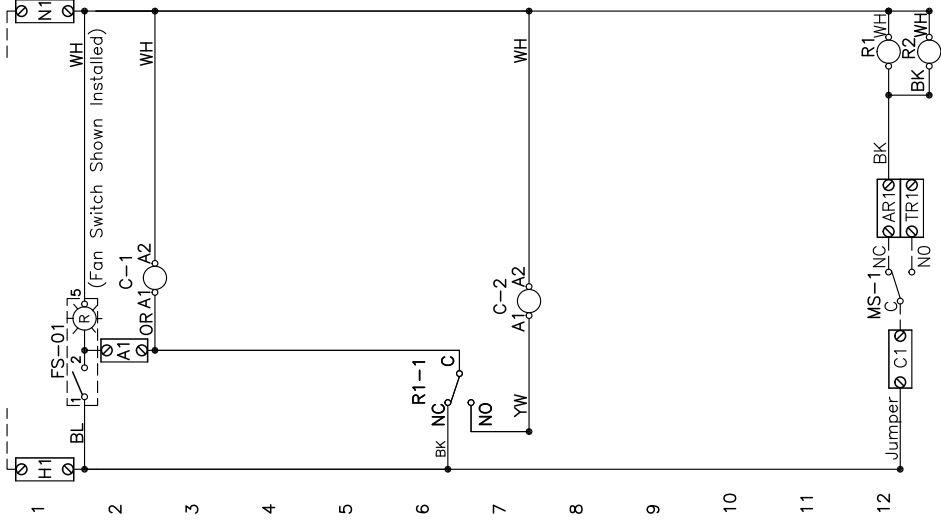
DRAWING NUMBER 11111002

JOB NUMBER 1891896

DRAWN BY

CONTROL INPUT 120VAC H1=LINE, N1=NEUTRAL 15A BKR - DO NOT WIRE TO SHUNT TRIP BREAKER

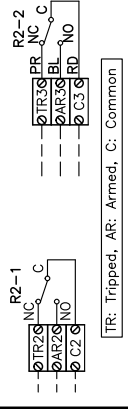
120V/1Ph, W/ 1 Exhaust Fan, 1 Supply Fan, Exhaust in Fire



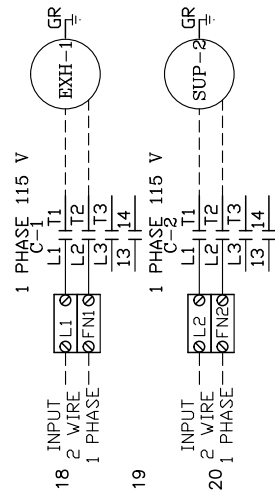
COMPONENT PARTS LIST

| LABEL | DESCRIPTION |
|-------|-------------------------------------|
| C-x | Contact |
| SI-x | Starter |
| OL-x | Overload |
| FS-xx | Fan Switch (Lighted) |
| LS-xx | Light Switch |
| L | Hood Light(s) |
| MS-x | MicroSwitch (Ansul/PyroChem) |
| Rx | Relay DPDT - 34.110.0184.0 + Socket |

SPARE FIRE DRY CONTACTS
 SPARE RELAY CONTACTS USED WHEN FIRE SYSTEM DISCHARGES TO SHUT DOWN EQUIPMENT OR PROVIDE SIGNALS. (NOT FOR BUILDING FIRE ALARM)



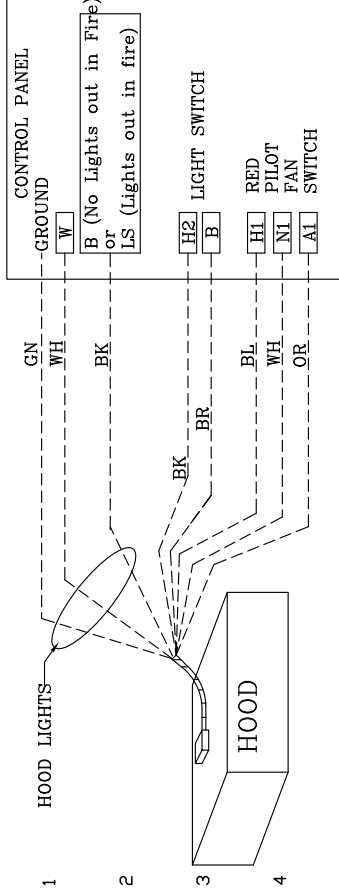
15 LIGHT INPUT 120VAC H2-H5=LINE, N2-N5=NEUTRAL 15A BKR (MAX 1400W PER CIRCUIT)



NOTES
 - - - - DENOTES FIELD WIRING
 _____ DENOTES INTERNAL WIRING
 WIRE COLOR
 BK - BLACK YW - YELLOW
 BL - BLUE CY - GRAY
 BR - BROWN PR - PURPLE
 OR - ORANGE OR/BL -ORANGE/BLUE (STRIPE)
 RD - RED BL/RD - BLUE/RED (STRIPE)
 WH - WHITE RD/GN - RED/GREEN (STRIPE)

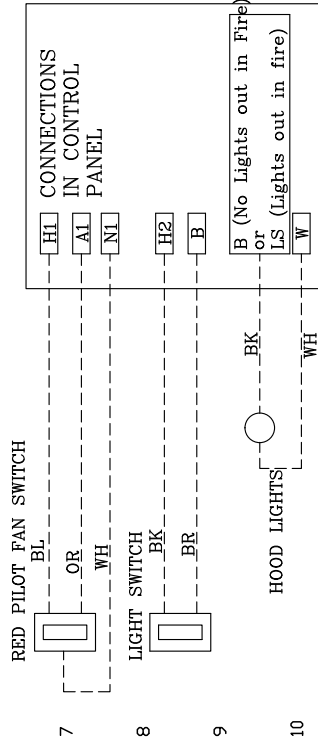
DRAWING SHOWN DE-ENERGIZED
 NOTE: IF WALL MOUNT PREWIRE, OR FIELD INSTALLED FIRE SYSTEM MICROSWITCH, THE TERMINALS SHOWING FACTORY WIRING MUST BE FIELD WIRED.

HOOD TO CONTROL PANEL

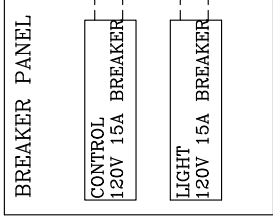


5 Light switch and fan switch mounted on the face of the hood and control panel mounted separately then field wire to the control panel as shown.

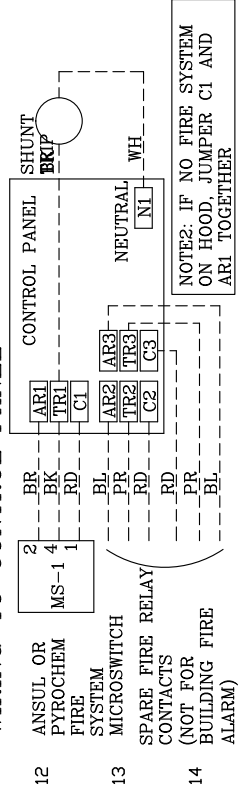
FIELD WIRED SWITCHES TO CONTROL PANEL



POWER FEED FOR CONTROLS AND LIGHTING

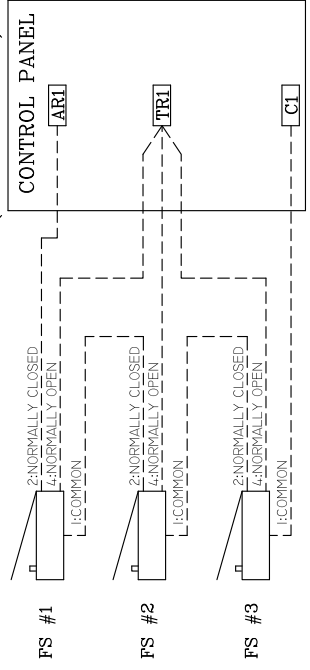


FIRE SYSTEM MICROSWITCH 120VAC SHUNT TRIP WIRING TO CONTROL PANEL BREAKER WIRING

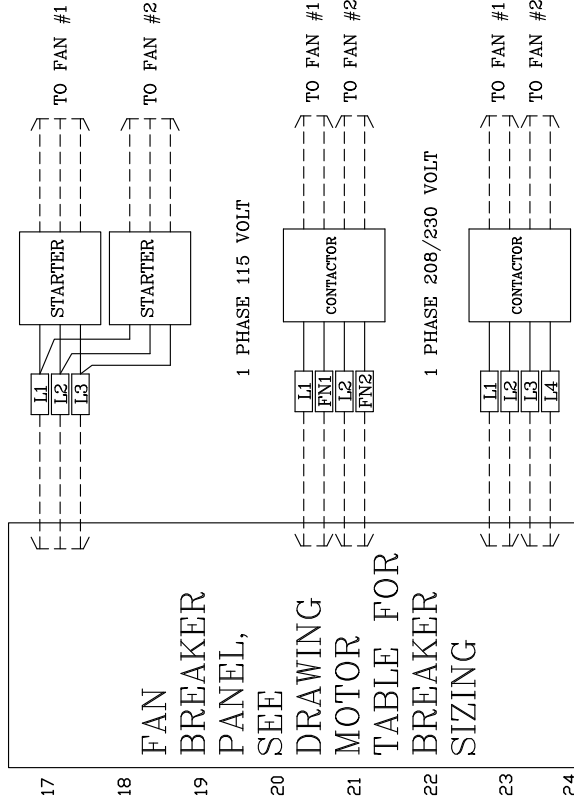


NOTE1: BUILDING FIRE ALARM IS TO BE WIRED TO THE "ALARM INITIATING SWITCH" INSIDE THE FIRE SYSTEM AUTOMAN

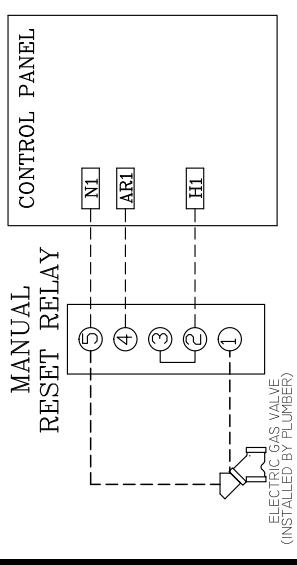
MICRO-SWITCHES WIRING WHEN MULTIPLE FIRE SYSTEMS CONNECTED TO ONE ELECTRICAL PANEL (3 SHOWN HERE)



FAN WIRING TO CONTROL PANEL



ELECTRIC GAS VALVE WITH RESET RELAY



NOTES

--- DENOTES FIELD WIRING
- - - - - DENOTES INTERNAL WIRING

WIRE COLOR

| | | |
|----------|---|-------------|
| BK | - | BLACK |
| BL | - | BLUE |
| BR | - | BROWN |
| OR | - | ORANGE |
| RD | - | RED |
| WH | - | WHITE |
| GN | - | GREEN |
| YW | - | YELLOW |
| GY | - | GRAY |
| PR | - | PURPLE |
| DR/BL | - | DRANGE/BLUE |
| (S)TRIPE | - | (S)TRIPE |
| BL/RD | - | BLUE/RED |
| RD/WH | - | RED/WHITE |
| RD/GN | - | RED/GREEN |
| (S)TRIPE | - | (S)TRIPE |