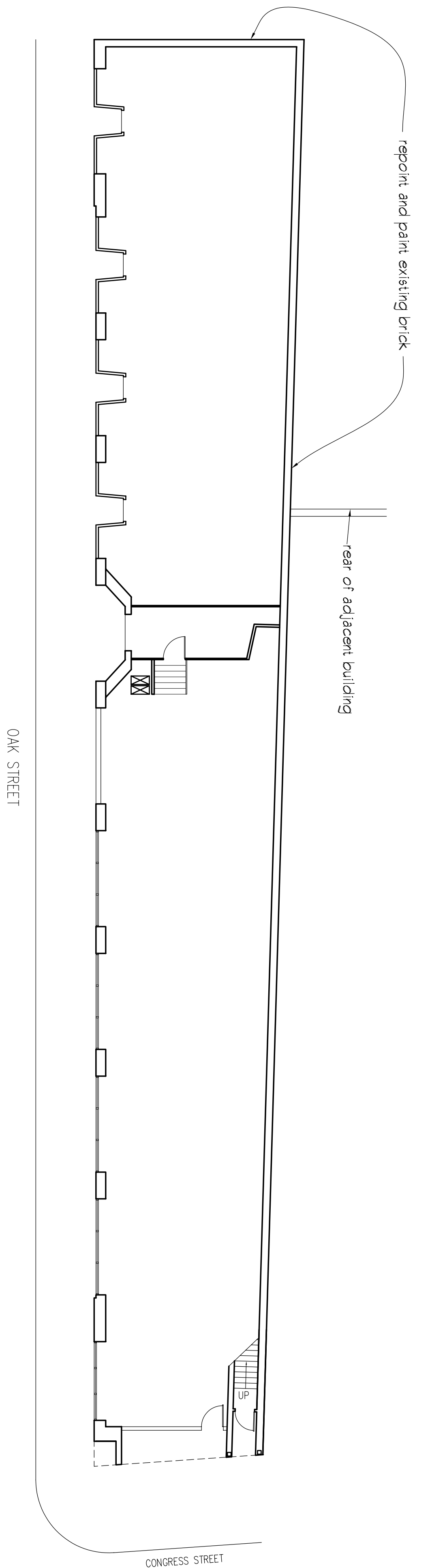


2 WEST ELEVATION
1/8" = 1'-0"

3 SOUTH ELEVATION
1/8" = 1'-0"



1 FIRST FLOOR PLAN
3/32" = 1'-0"

4 OAK ST. LINTEL REPAIR
1 1/2" = 1'-0"

REMOVE EXISTING BRICK AS REQUIRED TO EXPOSE ALL EXTERIOR SURFACES OF STEEL LINTEL. NOTE THAT BRICK ABOVE TOP FLANGE MUST BE REMOVED IN ALTERNATING SECTIONS ALONG FLANGE.

CLEAN ALL EXPOSED SURFACES OF STEEL IN ACCORDANCE WITH STEEL STRUCTURES PAINTING COUNCIL STANDARD SSPC-SP3, POWER TOOL CLEANING.

PERFORM UT THICKNESS TESTING OF WEB, TOP AND BOTTOM FLANGES OF STEEL BEAM AT FIFTH POINTS OF EACH LINTEL AND OTHER LOCATIONS AS DIRECTED BY ENGINEER.

REINFORCE WEB WHERE THICKNESS IS LESS THAN 5/16".

REINFORCE FLANGES WHERE THICKNESS IS LESS THAN 3/16".

COAT ALL EXPOSED SURFACES OF STEEL WITH TWO (2) COATS OF ZNC 921 COLD GALVANIZING COMPOUND BY ZNC WORLDWIDE. MIN DRY FILM THICKNESS PER COAT = 1.5 MILS.

REPLACE ALL BRICK.

date	revision number		
03/24/05		551 Congress Street Portland, ME	SSKI

REPAIR OF EXTERIOR FINISHES AND STEEL LINTELS

Date	Scale see drawing
Drawn By:	Checked By:
Revisions:	

ARCHETYPE, P.A. ARCHITECTS
48 Union Wharf Portland, Maine 04101
(207) 772-6022 Fax (207) 772-4056

Project:
551 CONGRESS STREET
ADDRESS
PORTLAND, MAINE

Owner:
NAME
ADDRESS
PORTLAND, MAINE

A0