

Thomas Moulton  
10 Dana Street, Ste 400  
Portland, ME 04101

Prepared For:

Consultant:

**ARCHETYPE**  
architects  
48 Union Wharf Portland, Maine 04101  
(207) 772-6022 ARCHETYPE@ARCHYPEPEA.COM

Architect:

Project:  
**81 OAK STREET**  
81 OAK STREET  
PORTLAND, ME 04101

Revisions:

Date: **30 NOV 2017**  
Scale: **As indicated**  
**PLAN, ELEVATION & DETAILS**

**A1**

### UNIT DOOR SCHEDULE

DOOR No.	SIZE			DOOR LEAF TYPE	DOOR FRAME			THRESHOLD	LABEL	OPERATION	SWEEP	CLOSER	REMARKS
	WIDTH	HEIGHT	THICKNESS		MATERIAL	FINISH	MATERIAL						
01	2'-8"	7'-0"	1 3/4"	2-PANEL SC	PTD.	WD	PTD.				No	No	
02	3'-0"	7'-0"	1 3/4"	2-PANEL SC	PTD.	WD	PTD.				No	No	
03	3'-0"	7'-0"	1 3/4"	2-PANEL SC	PTD.	WD	PTD.				No	No	
04	2'-8"	7'-0"	1 3/4"	2-PANEL SC	PTD.	WD	PTD.				No	No	

#### LIFE SAFETY NOTES:

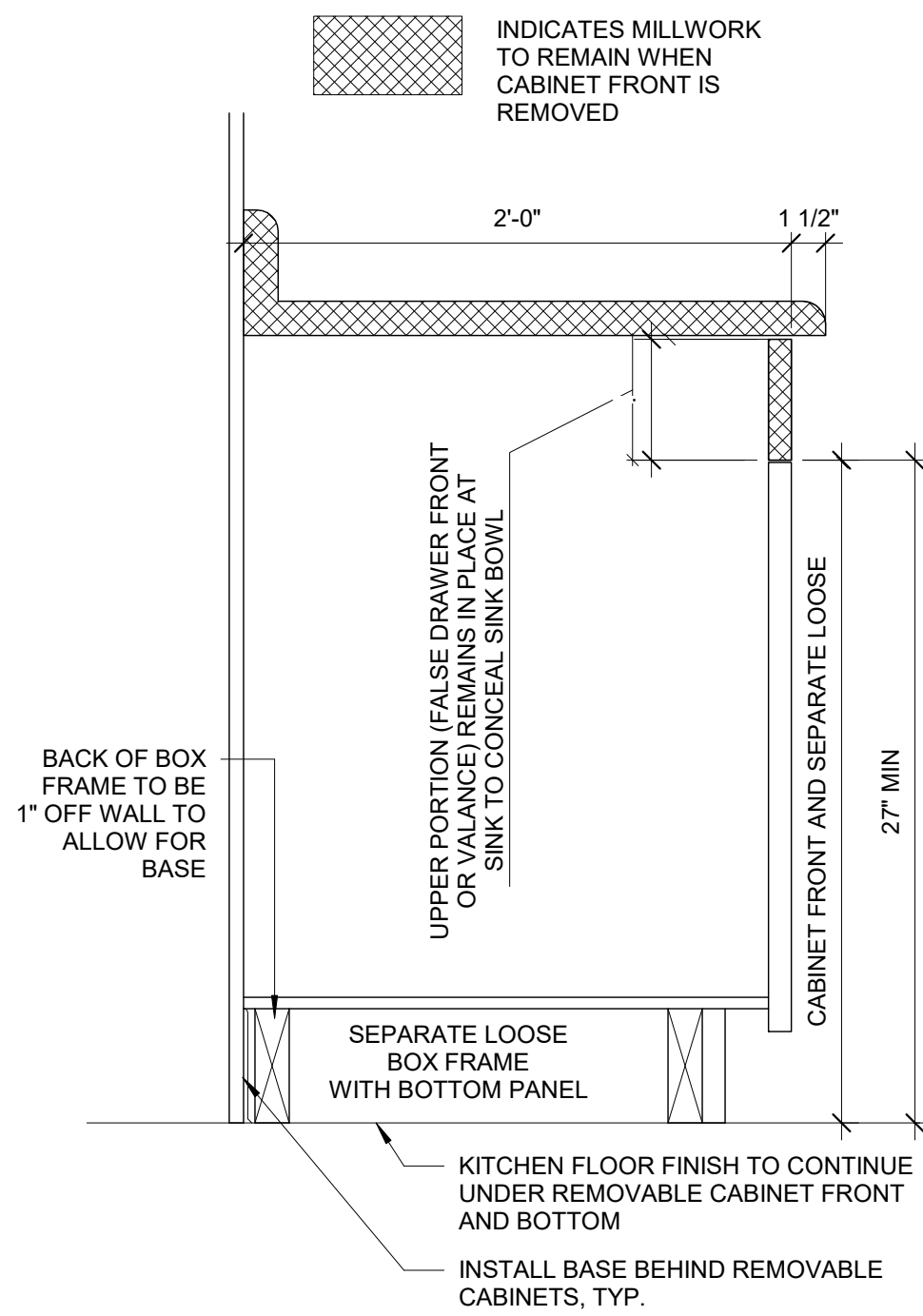
**1015.1.1**  
EXCEPTION: IN GROUP R-2 & R-3 OCCUPANCIES, ONE MEANS OF EGRESS IS PERMITTED WITHIN AND FROM INDIVIDUAL DWELLING UNITS WITH A MAXIMUM OCCUPANT LOAD OF 20 WHERE THE DWELLING UNIT IS EQUIPPED THROUGHOUT WITH AN AUTOMATIC SPRINKLER SYSTEM IN ACCORDANCE WITH SECTION 903.3.1.1 OR 903.3.1.2. UNIT IS FULLY SPRINKLED.

**OCCUPANT LOAD**  
RESIDENTIAL - 200 GROSS SQ. FT. PER TABLE 1004.1.1

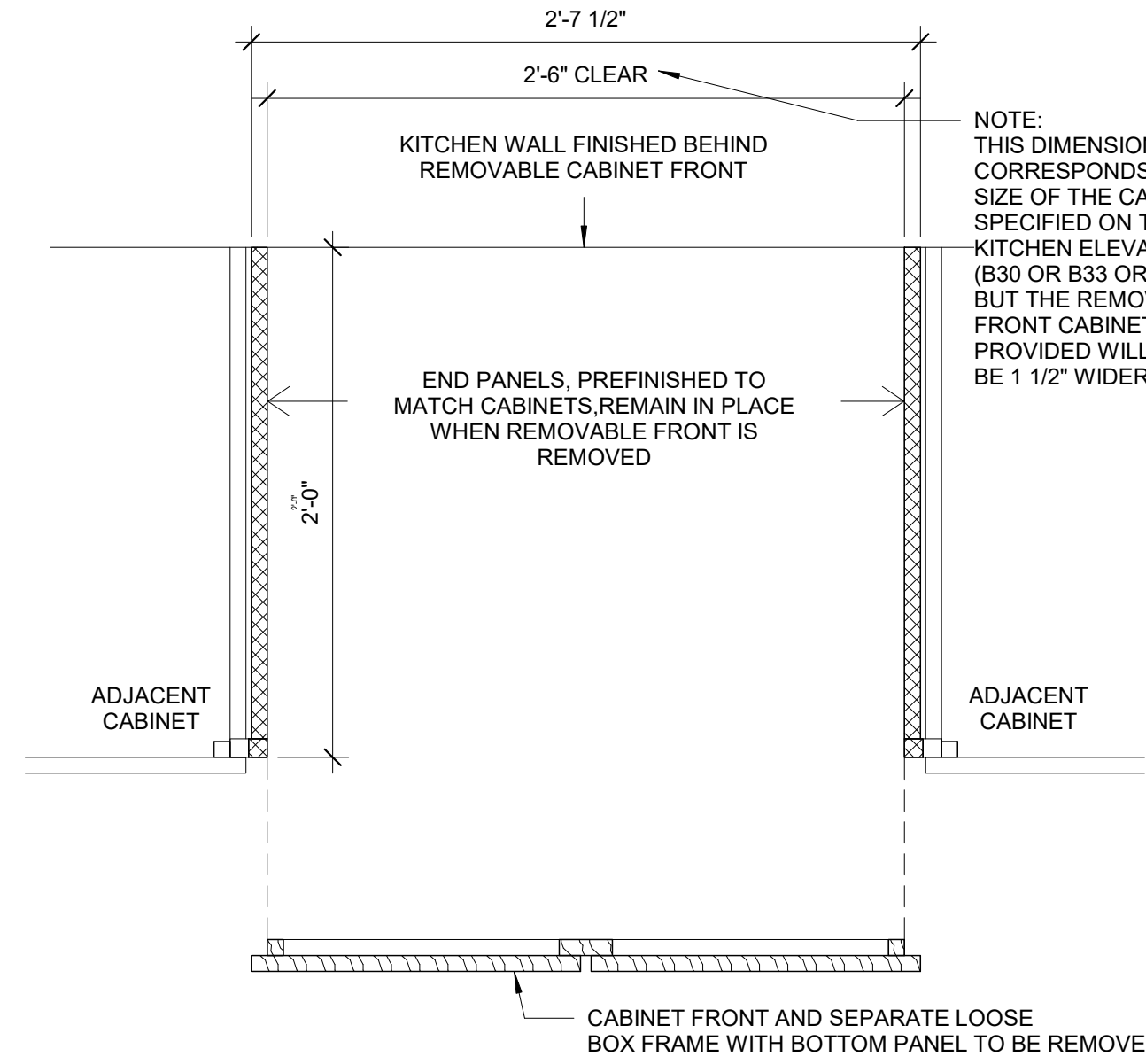
**EXIT ACCESS**  
NFPA 101 2009, TABLE A.7.6 (USED PER MUBEC)  
RESIDENTIAL, APARTMENTS, NEW  
COMMON PATH LIMIT (SPRINKLED) - 50 FEET  
DEAD-END LIMIT (SPRINKLED) - 50 FEET  
TRAVEL DISTANCE LIMIT (SPRINKLED) - 325 FEET

**EXIT ACCESS TRAVEL DISTANCE**  
IBC 2009, TABLE 1016.1  
250 FEET ALLOWED WITH SPRINKLER.  
34 FEET PROVIDED.

**709.3** FIRE PARTITIONS SHALL HAVE A FIRE RESISTANCE RATING OF NOT LESS THAN 1 HOUR.

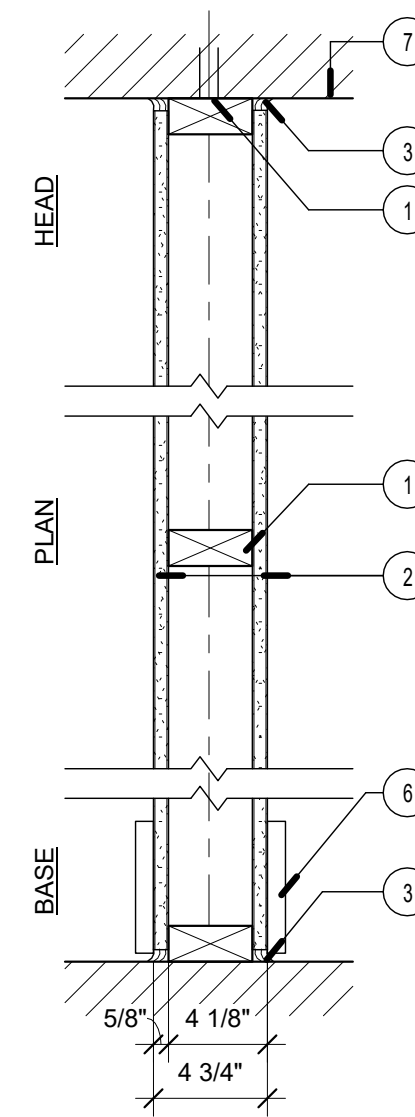


NOTE:  
ALL FINISHES (FLOOR, BASE & WALL) UNDER AND BEHIND ALL REMOVABLE FRONT CABINETS SHALL BE INSTALLED AND PIPE INSULATION KITS SHALL BE FURNISHED AND INSTALLED

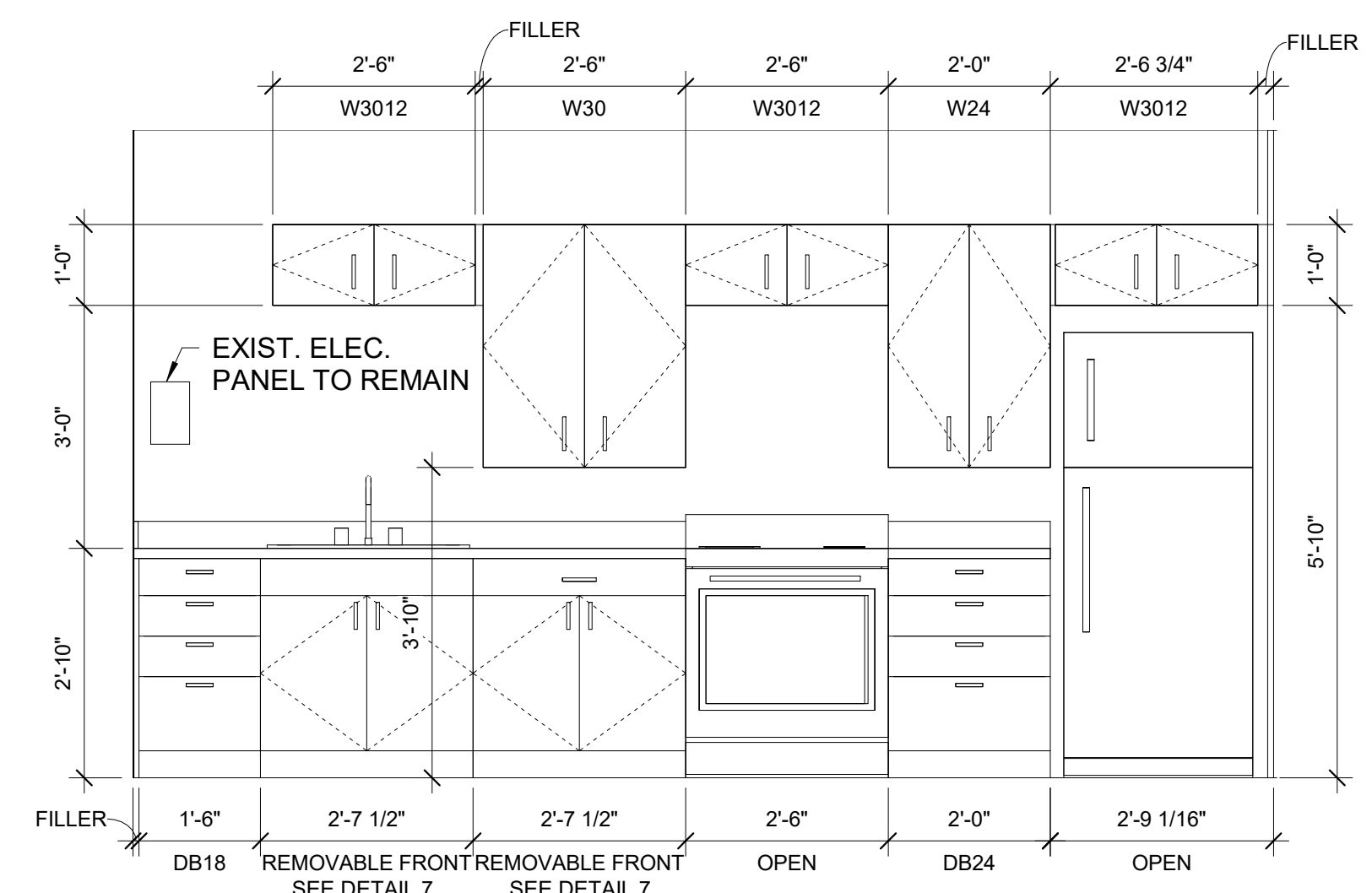


NOTE:  
THIS DIMENSION CORRESPONDS WITH THE SIZE OF THE CABINET SPECIFIED ON THE KITCHEN ELEVATIONS (B30 OR B33 OR B36, ETC) BUT THE REMOVABLE FRONT CABINET PROVIDED WILL ALWAYS BE 1 1/2" WIDER.

#### LABEL 1 HR W1 1 HR NON-BEARING PARTITION DESIGN NUMBER - U305 SOUND - N/A



- STUDS - NOM 2 BY 4 IN. SPACED 16 IN. OC MAX, EFFECTIVELY FIRESTOPPED.
- TYPE 'X' GYPSUM BOARD - 5/8 IN. THICK PAPER OR VINYL SURFACED, WITH BEVELED, SQUARE, OR TAPERED EDGES, APPLIED EITHER HORIZONTALLY OR VERTICALLY. GYPSUM PANELS NAILED 7 IN. OC WITH 6D CEMENT COATED NAILS 1-7/8 IN. LONG, 0.0915 IN. SHANK DIAM AND 15/64 IN. DIAM HEADS. WHEN USED IN WIDTHS OTHER THAN 48 IN., GYPSUM PANELS ARE TO BE INSTALLED HORIZONTALLY.
- CAULKING AND SEALANTS - A BEAD OF ACOUSTICAL SEALANT APPLIED AROUND THE PARTITION PERIMETER FOR SOUND CONTROL, BOTH SIDES OF WALL.
- BLOCKING - (NOT SHOWN) WOOD BLOCKING AS NEEDED
- TAPE AND COMPOUND - (NOT SHOWN) VINYL, DRY OR PREMIXED JOINT COMPOUND, APPLIED IN TWO COATS TO JOINTS AND SCREW HEADS, PAPER TAPE, 2 IN. WIDE, EMBEDDED IN FIRST LAYER OF COMPOUND OVER ALL JOINTS.
- BASE - AS SCHEDULED
- UNDERSIDE OF FLOOR/ROOF SHEATHING ABOVE WALL TO BE CONTINUOUS THROUGH FLOOR/ROOF FRAMING TO SHEATHING



### 7 REMOVABLE CABINET SECTION DETAIL

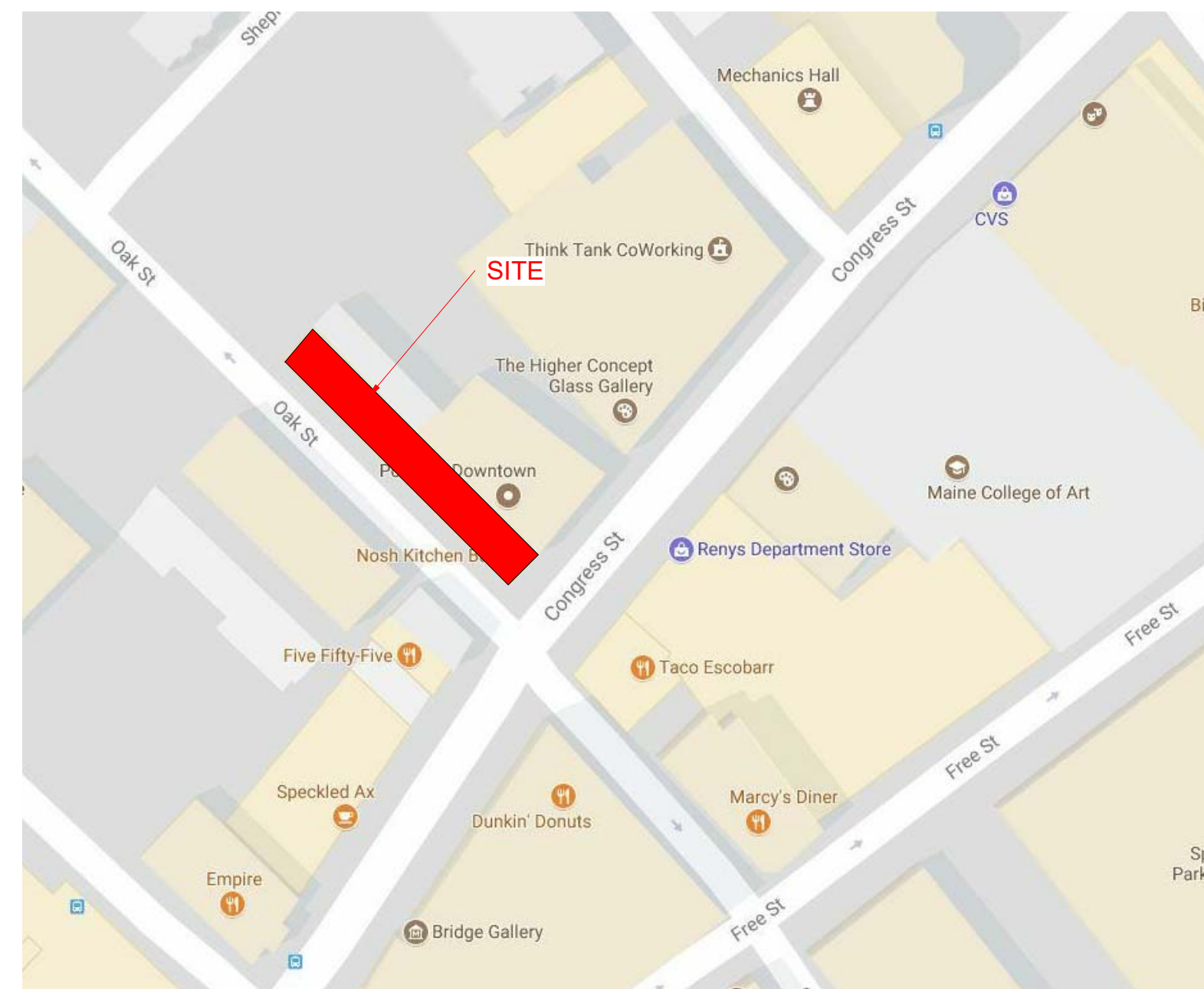
1 1/2" = 1'-0"

### 3 WALL 1 - 1 HR RATED PARTITION

1 1/2" = 1'-0"

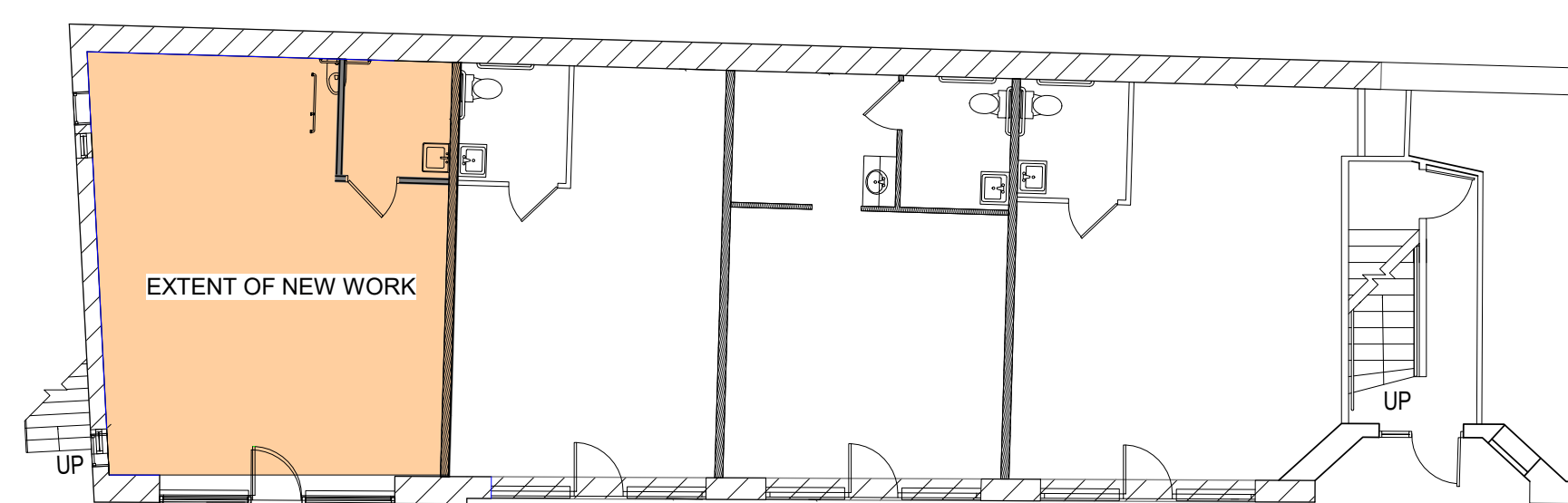
### 4 KITCHEN ELEVATION

1/2" = 1'-0"



### 6 LOCATION MAP

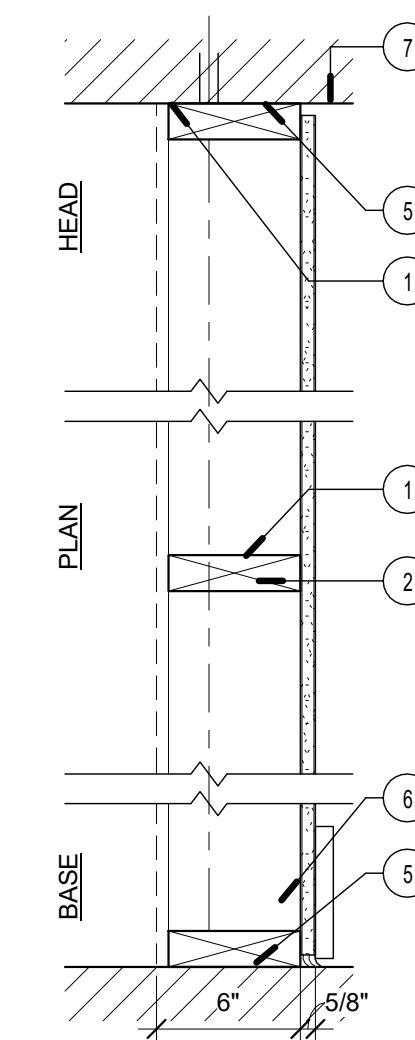
1" = 100'-0"



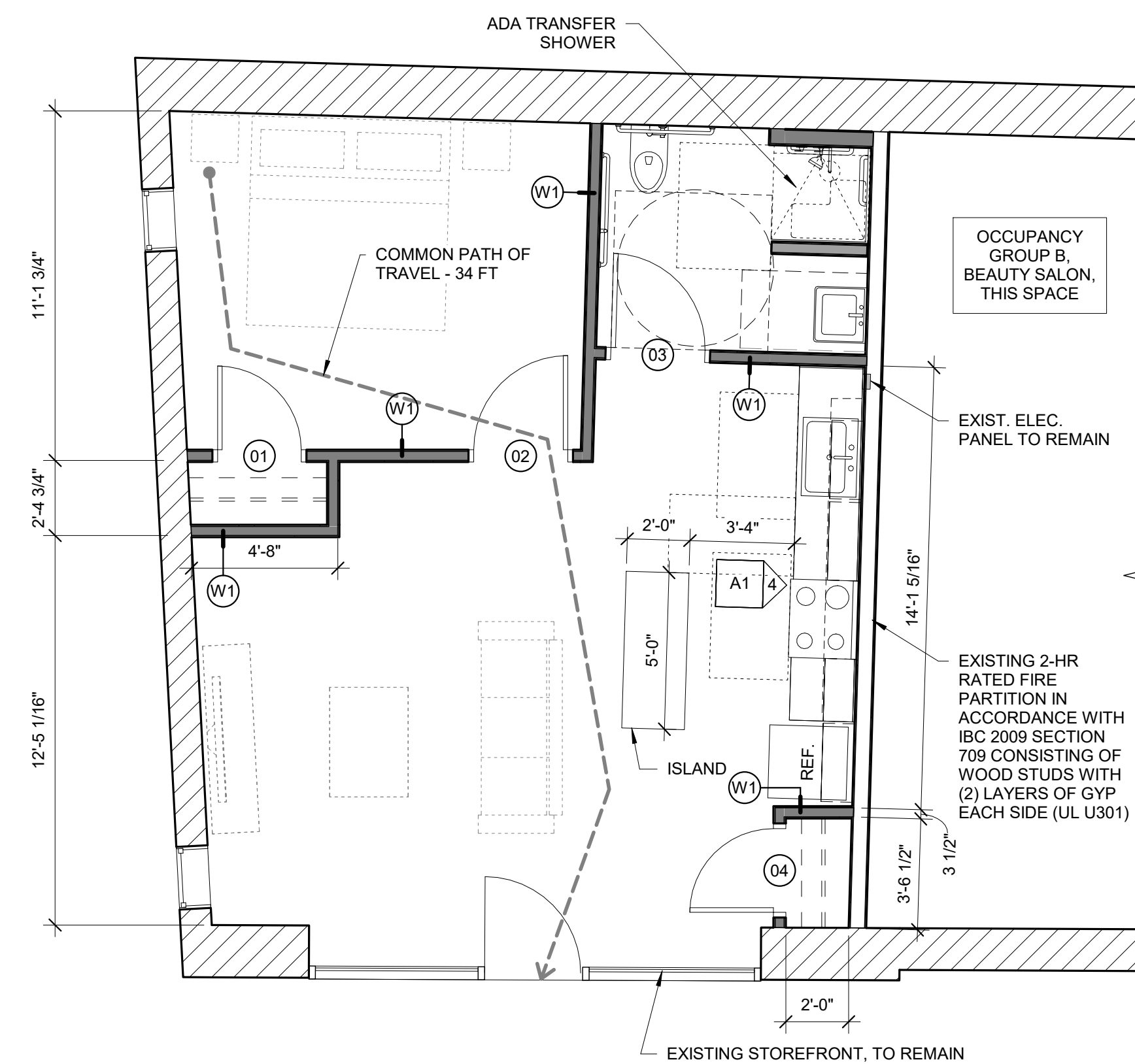
### 5 KEY PLAN

3/32" = 1'-0"

#### W2 NON-RATED NON-BEARING DESIGN NUMBER - N/A STC SOUND - N/A



- WOOD FRAMING - WOOD STUDS, NOM 2 IN BY 6 IN., SINGLE TOP PLATE AND SINGLE BASE PLATE.
- TYPE 'X' GYPSUM BOARD - (1) LAYER 5/8" GYP. BD. APPLIED PERPENDICULAR TO FRAMING WITH 1" TYPE S STEEL SCREWS SPACED 8" O.C. USE MOISTURE RESISTANT GYPBOARD ON ALL BATHROOM WALLS - TYPICAL ALL BATHROOMS. GYP BD. TO BE FULL HEIGHT AND SEALED TO UNDERSIDE OF FLOOR/ROOF SHEATHING ABOVE.
- BLOCKING - (NOT SHOWN) WOOD BLOCKING AS NEEDED
- TAPE AND COMPOUND - (NOT SHOWN) VINYL, DRY OR PREMIXED JOINT COMPOUND, APPLIED IN TWO COATS TO JOINTS AND SCREW HEADS, PAPER TAPE, 2 IN. WIDE, EMBEDDED IN FIRST LAYER OF COMPOUND OVER ALL JOINTS.
- SEALANT - ACOUSTICAL SEALANT TOP & BOTTOM.
- BASE - SEE FINISH SCHEDULE
- UNDERSIDE OF CEILING



### 1 FIRST FLOOR PLAN WITH LIFE SAFETY

1/4" = 1'-0"

657 GROSS SQUARE FEET