

Prepared For:  
**Thomas Moulton**  
10 Dana Street, Ste 400  
Portland, ME 04101

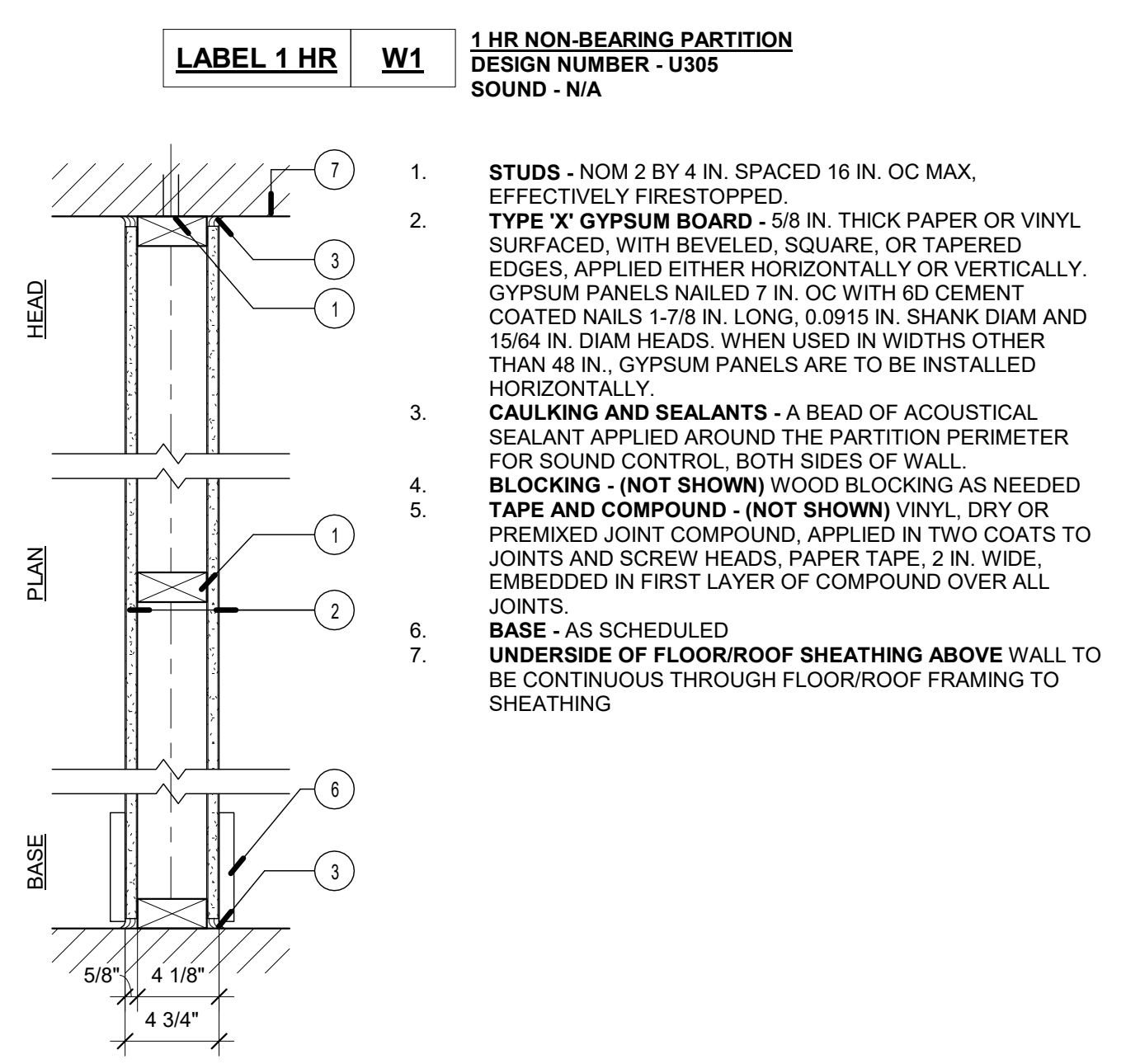
Consultant:  
**ARCHETYPE architects**  
48 Union Wharf Portland, Maine 04101  
(207) 772-6022 ARCHETYPE@ARCHETYPEPA.COM

Project:  
**81 OAK STREET**  
81 OAK STREET  
PORTLAND, ME 04101

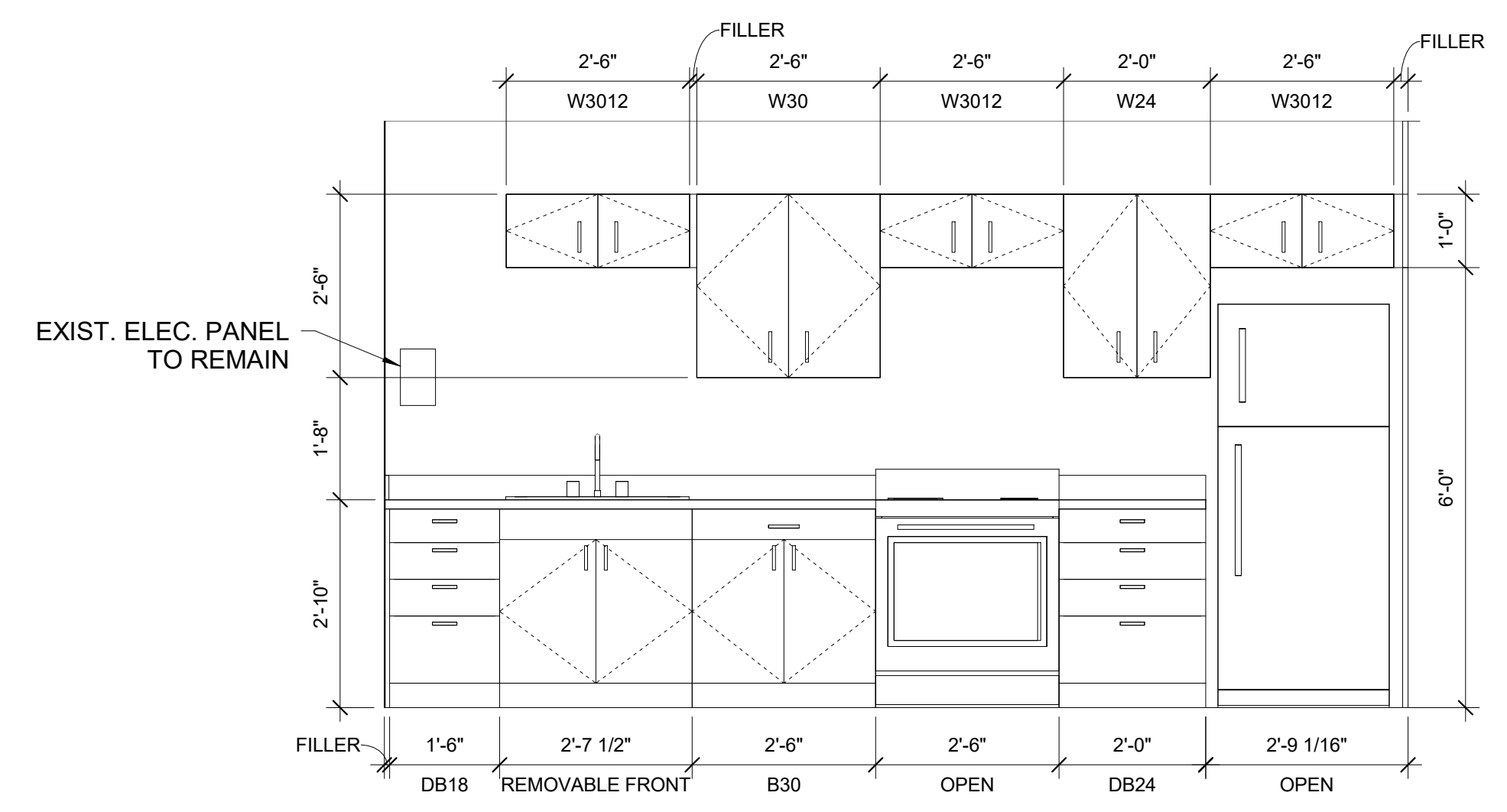
Revisions:  
Date: **27 OCT 2017**  
Scale: **As indicated**  
**PLAN, ELEVATION & DETAILS**

**A1**

UNIT DOOR SCHEDULE														
DOOR No.	SIZE		THICKNESS	DOOR LEAF			DOOR FRAME		THRESHOLD	LABEL	OPERATION	SWEEP	CLOSER	REMARKS
	WIDTH	HEIGHT		MATERIAL	FINISH	MATERIAL	FINISH							
01	2'-8"	7'-0"	1 3/4"	2-PANEL	SC	PTD.	WD	PTD.			No	No		
02	3'-0"	7'-0"	1 3/4"	2-PANEL	SC	PTD.	WD	PTD.			No	No		
03	3'-0"	7'-0"	1 3/4"	2-PANEL	SC	PTD.	WD	PTD.			No	No		
04	2'-8"	7'-0"	1 3/4"	2-PANEL	SC	PTD.	WD	PTD.			No	No		



**3 | WALL 1 - 1 HR RATED PARTITION**  
1 1/2" = 1'-0"



**4 | KITCHEN ELEVATION**  
1/2" = 1'-0"

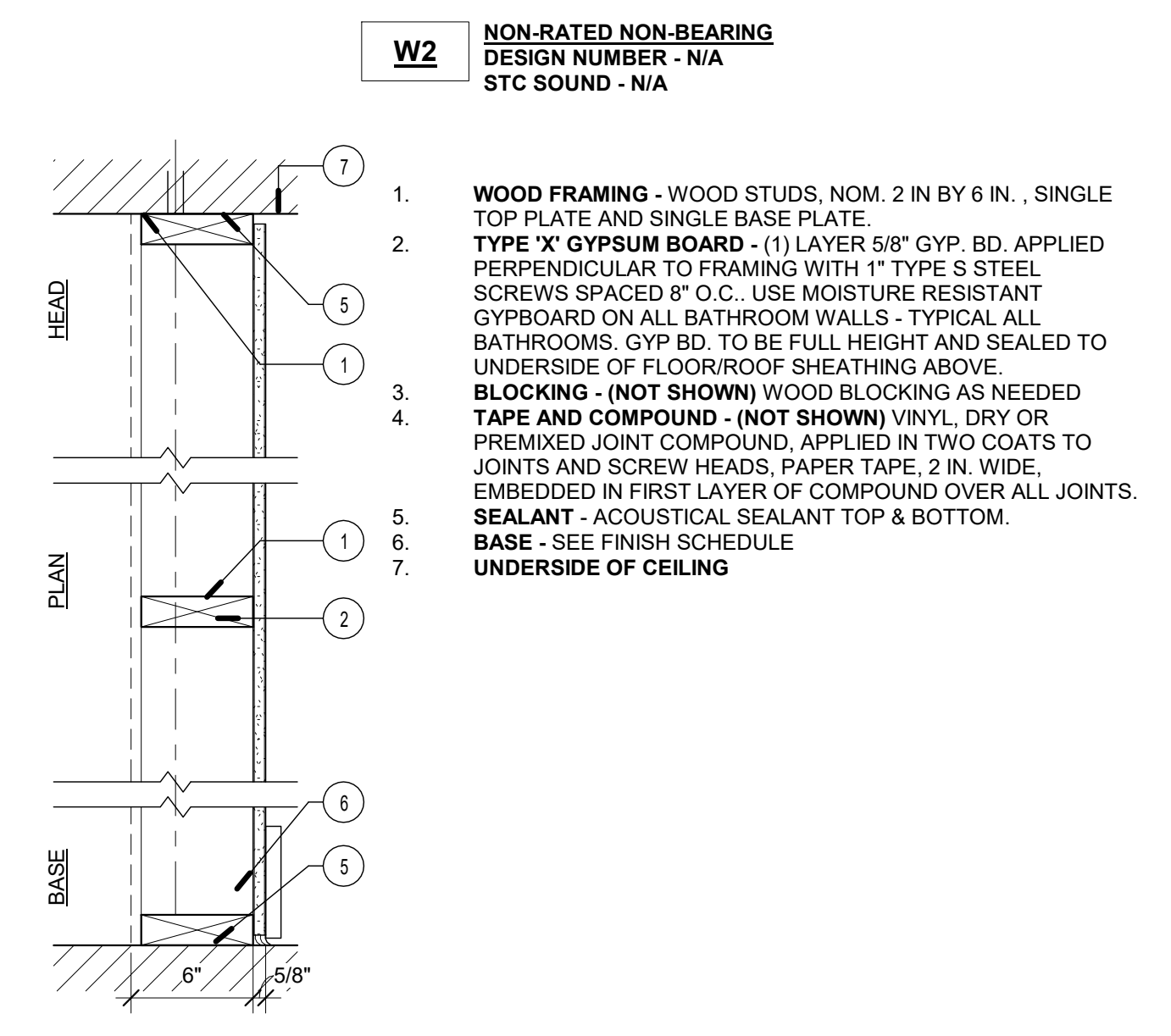
**LIFE SAFETY NOTES:**

**1015.1.1**  
EXCEPTION: IN GROUP R-2 & R-3 OCCUPANCIES, ONE MEANS OF EGRESS IS PERMITTED WITHIN AND FROM INDIVIDUAL DWELLING UNITS WITH A MAXIMUM OCCUPANT LOAD OF 20 WHERE THE DWELLING UNIT IS EQUIPPED THROUGHOUT WITH AN AUTOMATIC SPRINKLER SYSTEM IN ACCORDANCE WITH SECTION 903.3.1.1 OR 903.3.1.2. UNIT IS FULLY SPRINKLED.

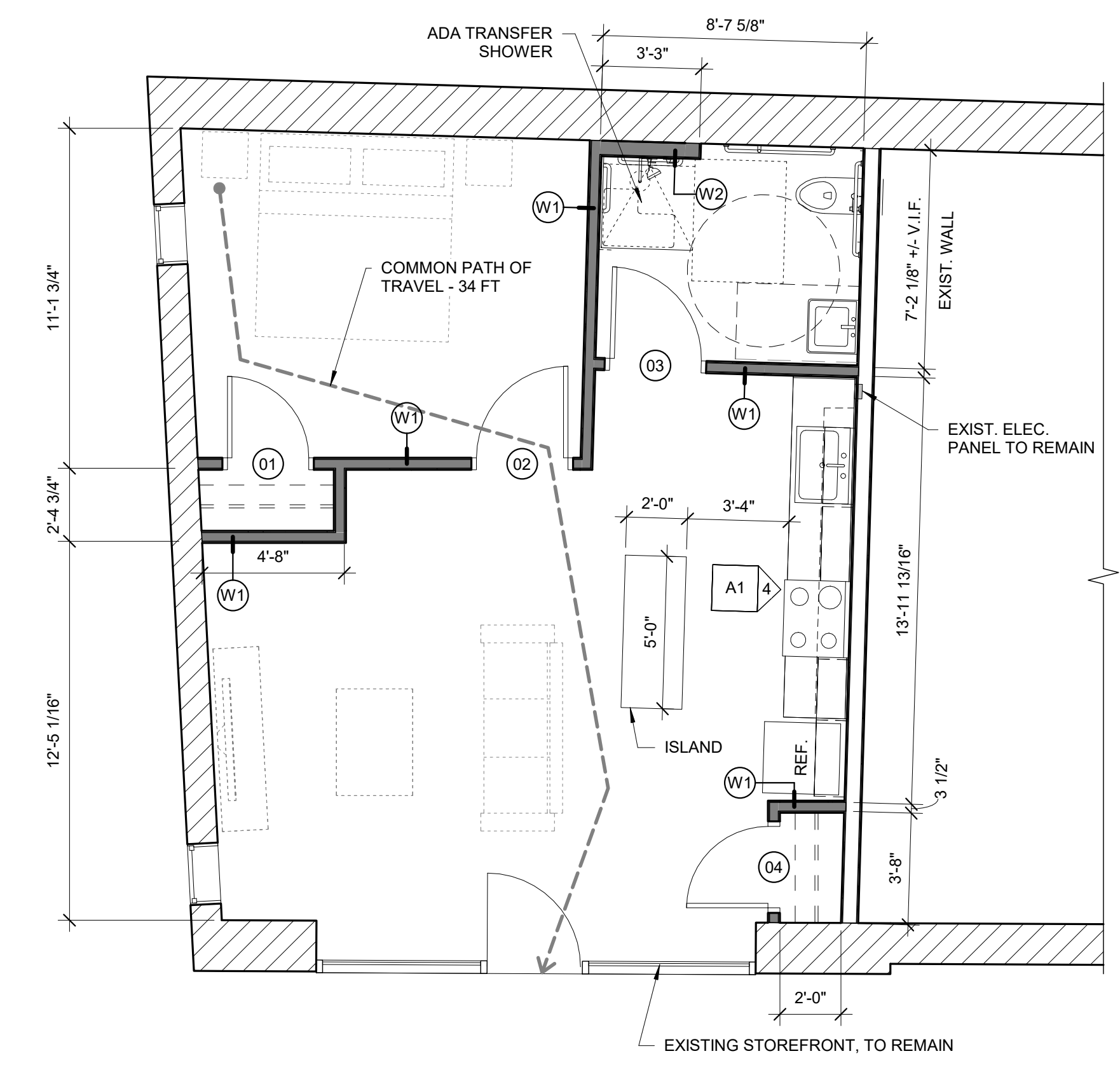
**OCCUPANT LOAD**  
RESIDENTIAL - 200 GROSS SQ. FT. PER TABLE 1004.1.1

**EXIT ACCESS**  
NFPA 101 2009, TABLE A.7.6 (USED PER MUBEC)  
RESIDENTIAL APARTMENTS, NEW  
COMMON PATH LIMIT (SPRINKLED) - 50 FEET  
DEAD-END LIMIT (SPRINKLED) - 50 FEET  
TRAVEL DISTANCE LIMIT (SPRINKLED) - 325 FEET

**EXIT ACCESS TRAVEL DISTANCE**  
IBC 2009, TABLE 1016.1  
250 FEET ALLOWED WITH SPRINKLER.  
34 FEET PROVIDED.



**2 | WALL 2 - NON-RATED ONE-SIDED PARTITION**  
1 1/2" = 1'-0"



**1 | FIRST FLOOR PLAN WITH LIFE SAFETY**  
1/4" = 1'-0"

657 GROSS SQUARE FEET