

Prepared For:  
551 CONGRESS STREET, LLC

Consultant:

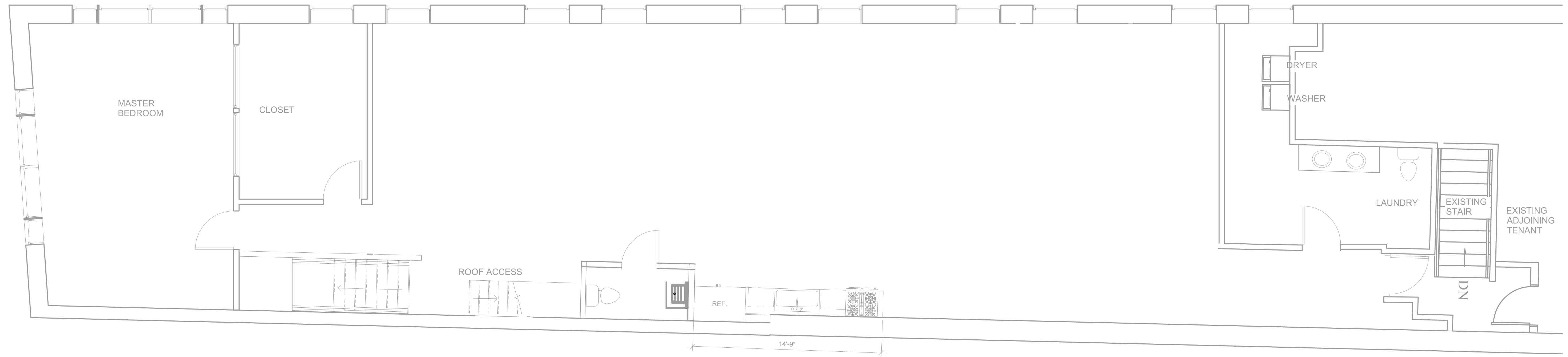
Architect:  
ARCHETYPE  
48 Union Wharf Portland, Maine 04101  
(207) 772-6022 Fax (207) 772-4056

Project:  
551A CONGRESS STREET  
551A CONGRESS STREET,  
PORTLAND, ME

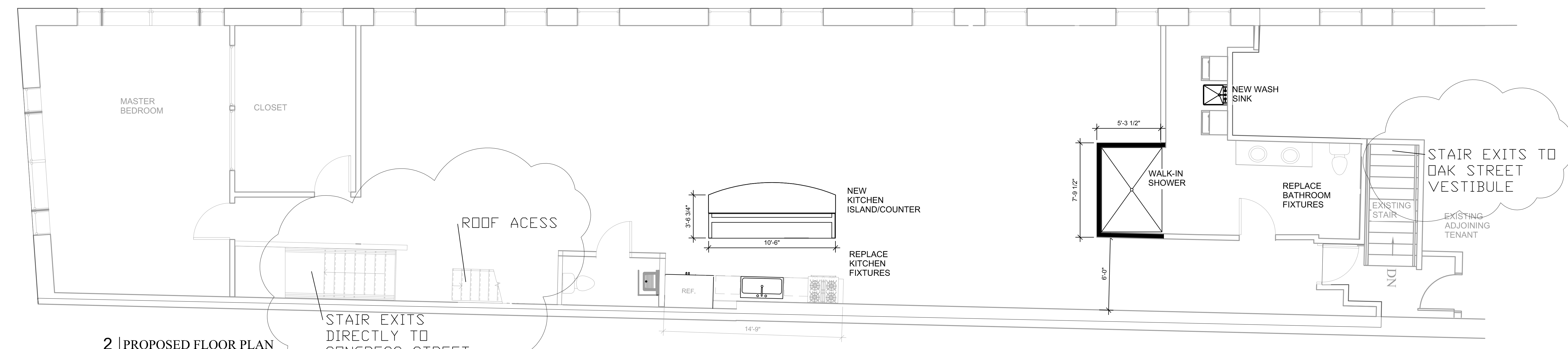
Revisions:  
3-2-2016 RESPONSE TO CITY FIRE  
3-8-2016 RESPONSE TO  
INSPECTIONS

Date: 1-27-2016  
Scale: AS NOTED  
EXISTING & PROPOSED  
FLOOR PLANS

A1.01



1 | EXISTING FLOOR PLAN  
1/4" = 1'-0"



2 | PROPOSED FLOOR PLAN  
1/4" = 1'-0"



3 | EXISTING FLOOR/CEILING ASSEMBLY  
1 1/2" = 1'-0"