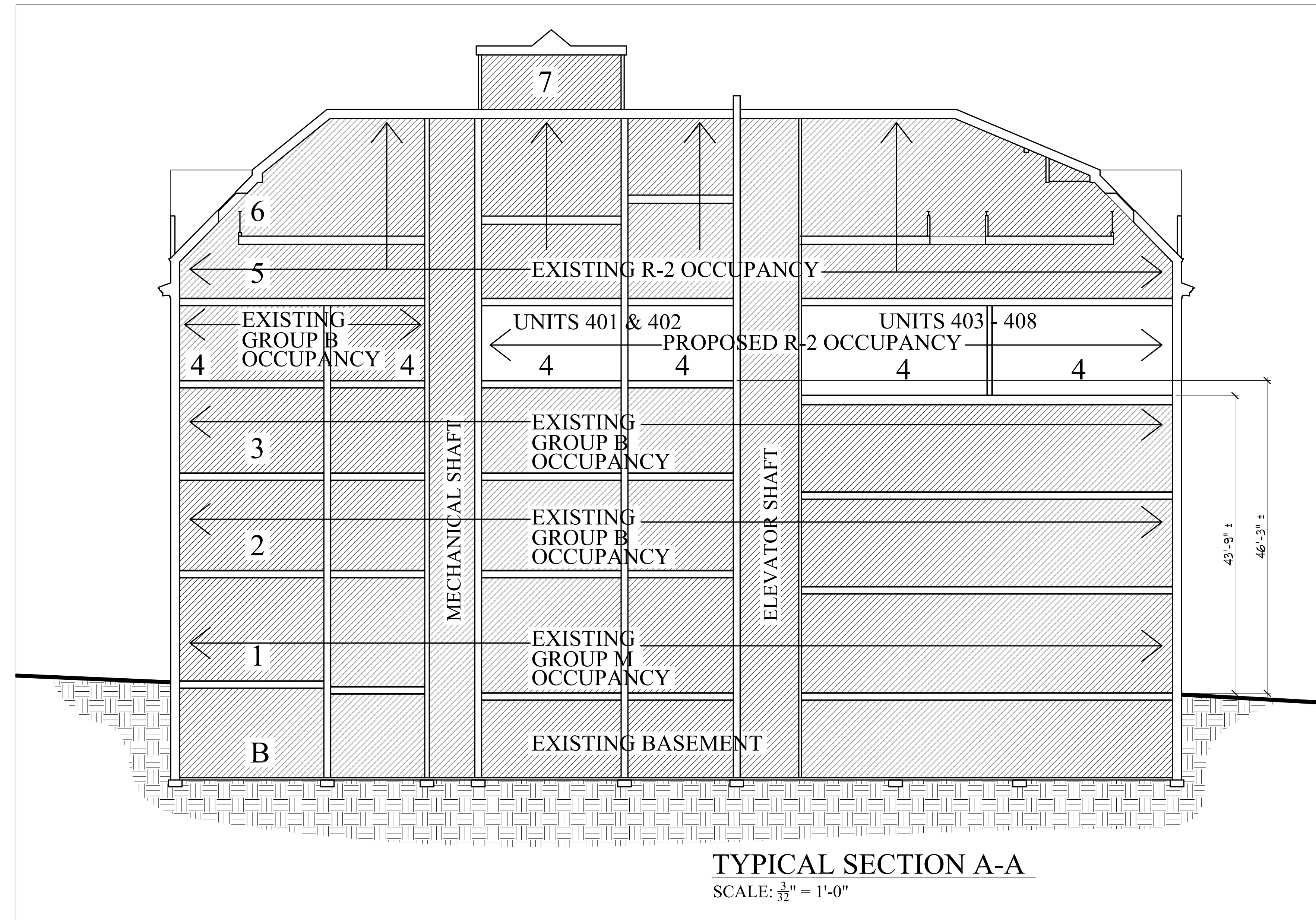
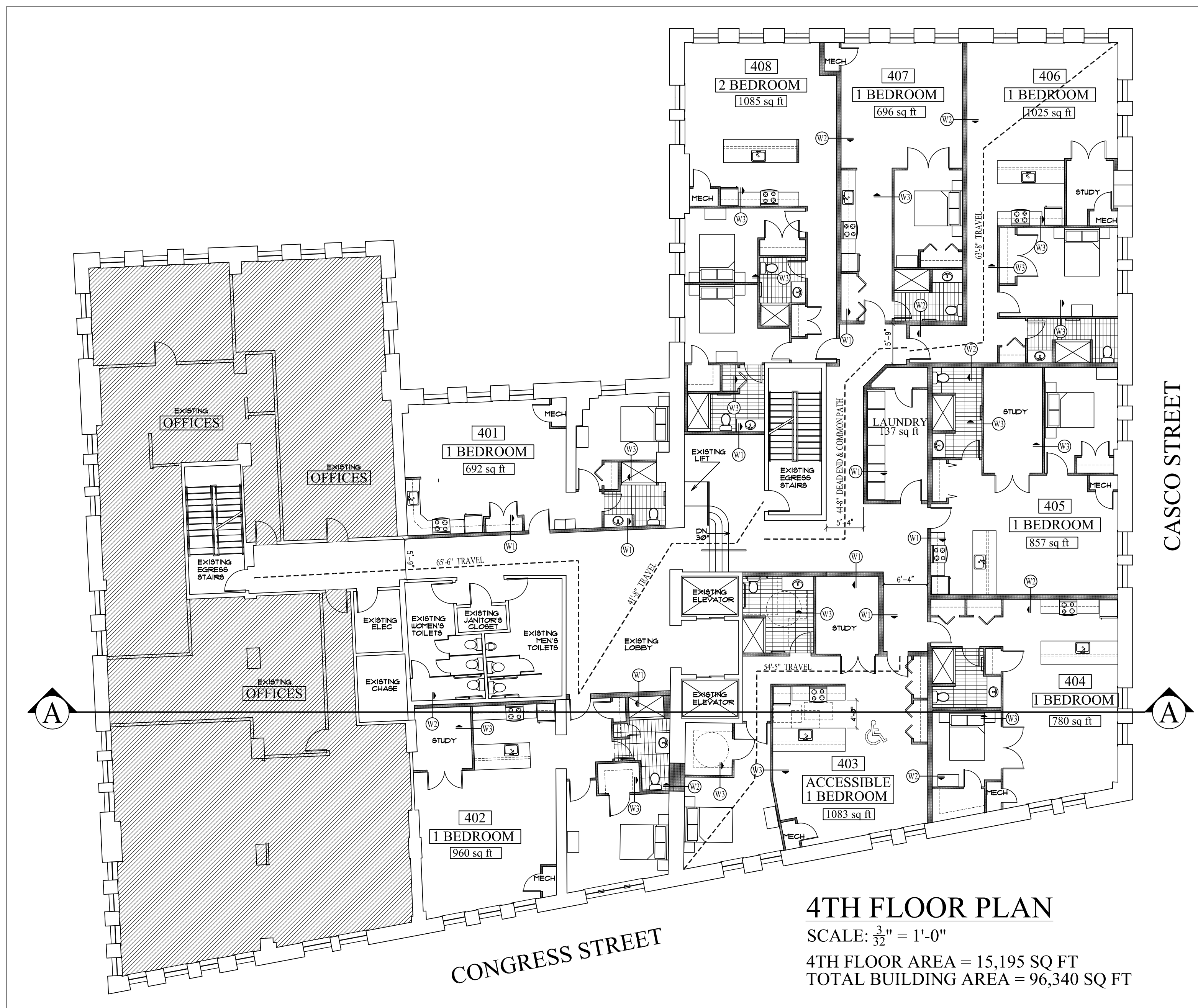


J B BROWN BUILDING

531-537 CONGRESS STREET
PORTLAND MAINE

4TH FLOOR APARTMENTS



DRAWING LIST

CIVIL DRAWINGS
2 BOUNDARY SURVEY
ARCHITECTURAL DRAWINGS
A1 FOURTH FLOOR PLAN
A1.1 DETAIL FOURTH FLOOR PLAN
A1.2 DETAIL FOURTH FLOOR PLAN
A2 REFLECTED CEILING PLAN
A3 WALL & FLOOR TYPES
A4 INTERIOR ELEVATIONS

RELEVANT CODES		REFERENCE	REFERENCE
INTERNATIONAL BUILDING CODE 2009		310	
OCCUPANCY R-2 (RESIDENTIAL)		T601	
CONSTRUCTION TYPE 3B		903.3.1.2	
BUILDING SPRINKLED NFPA 13			
ALLOWABLE AREA - 16,000 SQ.FT.	T503		
PROPOSED FLOOR AREA (15,195 SQ.FT.)			
ALLOWABLE HEIGHT (5) STORIES (4 STORY TABULAR HGT. PLUS 1 STORY SPRINKLER INCREASE)	T503		
PROPOSED HEIGHT (5) STORIES	504.2		
FIRE RESISTANCE RATING STRUCTURAL FRAME (0 HOUR)	T601		
FIRE RESISTANCE RATING EXTERIOR BEARING WALLS (2 HOUR)	T601		
FIRE RESISTANCE RATING INTERIOR BEARING WALLS (0 HOUR)	T601		
FIRE RESISTANCE RATING NON-BEARING WALLS AND PARTITIONS (0 HOURS)	T601		
FIRE RESISTANCE RATING FLOOR CONSTRUCTION (0 HOUR)	T601		
FIRE RESISTANCE RATING ROOF CONSTRUCTION (0 HOUR)	T601		
MEANS OF EGRESS			
MINIMUM REQUIRED CORRIDOR WIDTH - 44"	1018.2		
FIRE PARTITIONS			
CORRIDOR FIRE PARTITION (NONBEARING) - 1/2 HR	708.1		
CORRIDOR DOORS .33 HOURS IN 1/2 HOUR WALL	T-1018.1		
CORRIDOR DOORS TO HAVE SMOKE CONTROL	T-715.4		
DWELLING UNIT SEPARATION - 1/2 HR	715.4.3.1		
	709.3 (EX. 2)		
ELEVATOR LOBBIES NOT REQUIRED FOR FIRE	708.14.1 (EX. 4)		
ALARM REQUIRED	907.2.9		
SMOKE DETECTORS REQUIRED	907.2.10.2		
REQUIRED SEPARATION OF OCCUPANCY R-2 & B = 1 HR	T-508.4		
NOT LESS THAN 50 STC ASSEMBLY BETWEEN DWELLING UNITS	1207.2		
NFPA 101 - 2006			
OCCUPANCY - RESIDENTIAL			
CONSTRUCTION TYPE III(200)			
A.8.2.1.2			
BUILDING SPRINKLED NFPA 13			
CORRIDORS SHALL HAVE A MINIMUM WIDTH OF 44 INCHES	30.2.3.3		
AREA OF REFUGE NOT REQUIRED	30.2.2.12.1		
TRAVEL DISTANCE WITHIN DWELLING UNIT < 125 FT	30.2.6.2		
TRAVEL DISTANCE FROM UNIT TO EXIT < 200 FT	30.2.6.3.2		
DEAD END CORRIDORS < 50 FT	30.2.5.4.2		
COMMON PATH OF TRAVEL < 50 FT	30.2.5.3.2		
FIRE ALARM SYSTEM IS REQUIRED	30.3.4.1.1		
SMOKE ALARMS ARE REQUIRED	30.3.4.5		
EXTINGUISHMENT SYSTEM IS REQUIRED	30.3.5.1		
CORRIDOR WALLS SHALL HAVE A MINIMUM 1/2 HOUR FIRE RATING	30.3.6.1.2		
CORRIDOR DOORS SHALL HAVE A MINIMUM 1/3 HOUR FIRE RATING	30.3.6.2.1		
CORRIDOR DOORS SHALL BE SELF CLOSING AND SELF LATCHING	30.3.6.2.3		
DWELLING UNIT SEPARATION WALLS SHALL HAVE MIN 1/2 HR RATING	30.3.7.2		

CONTACTS

Architect:
Archetype Architects
48 Union Wharf
Portland, ME
04101
(207) 772-6022

Mechanical Engineer:
Mechanical Systems
Engineers, Inc.
10 Forest Falls Drive
Yarmouth, ME
(207) 846-1441