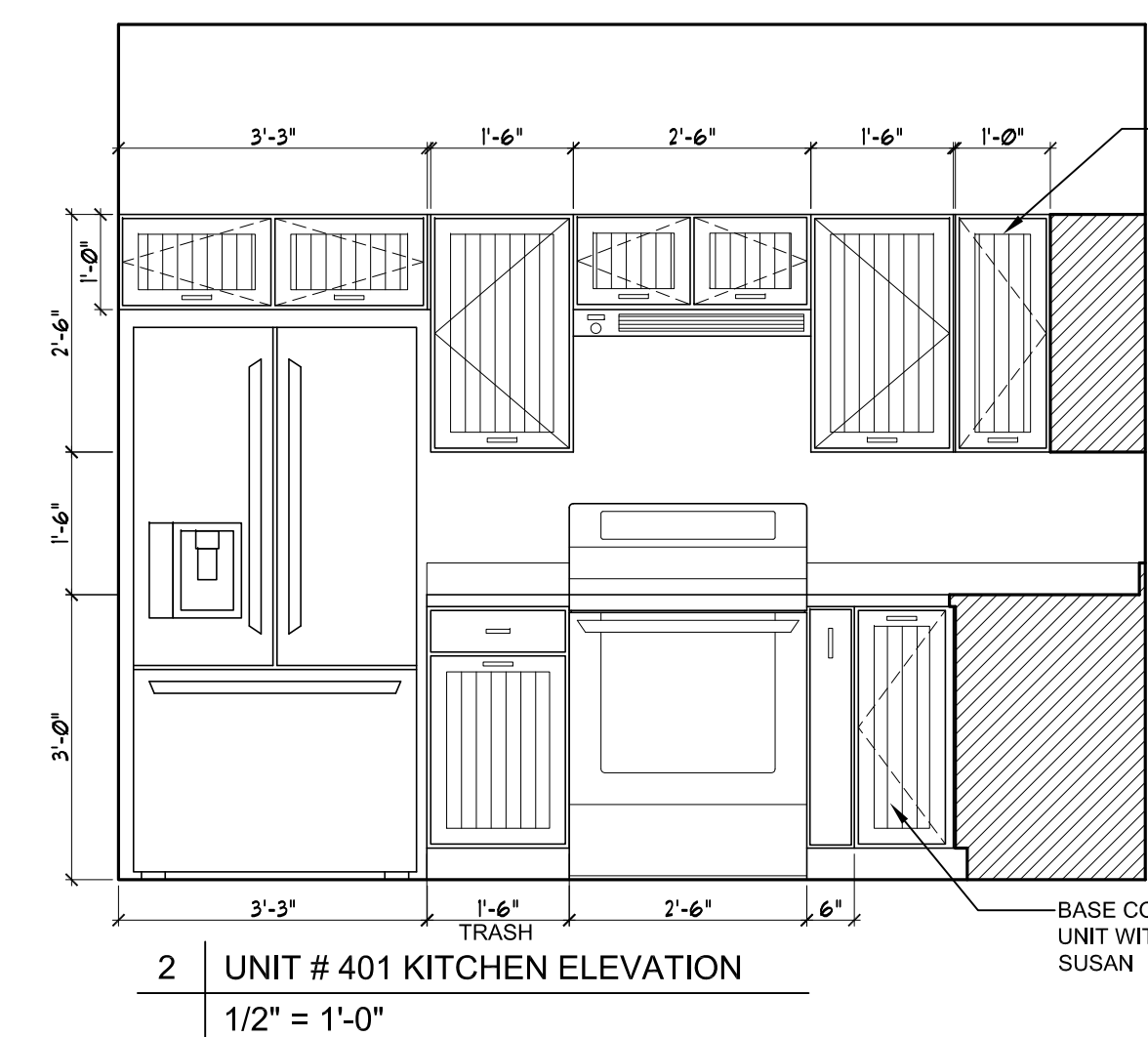
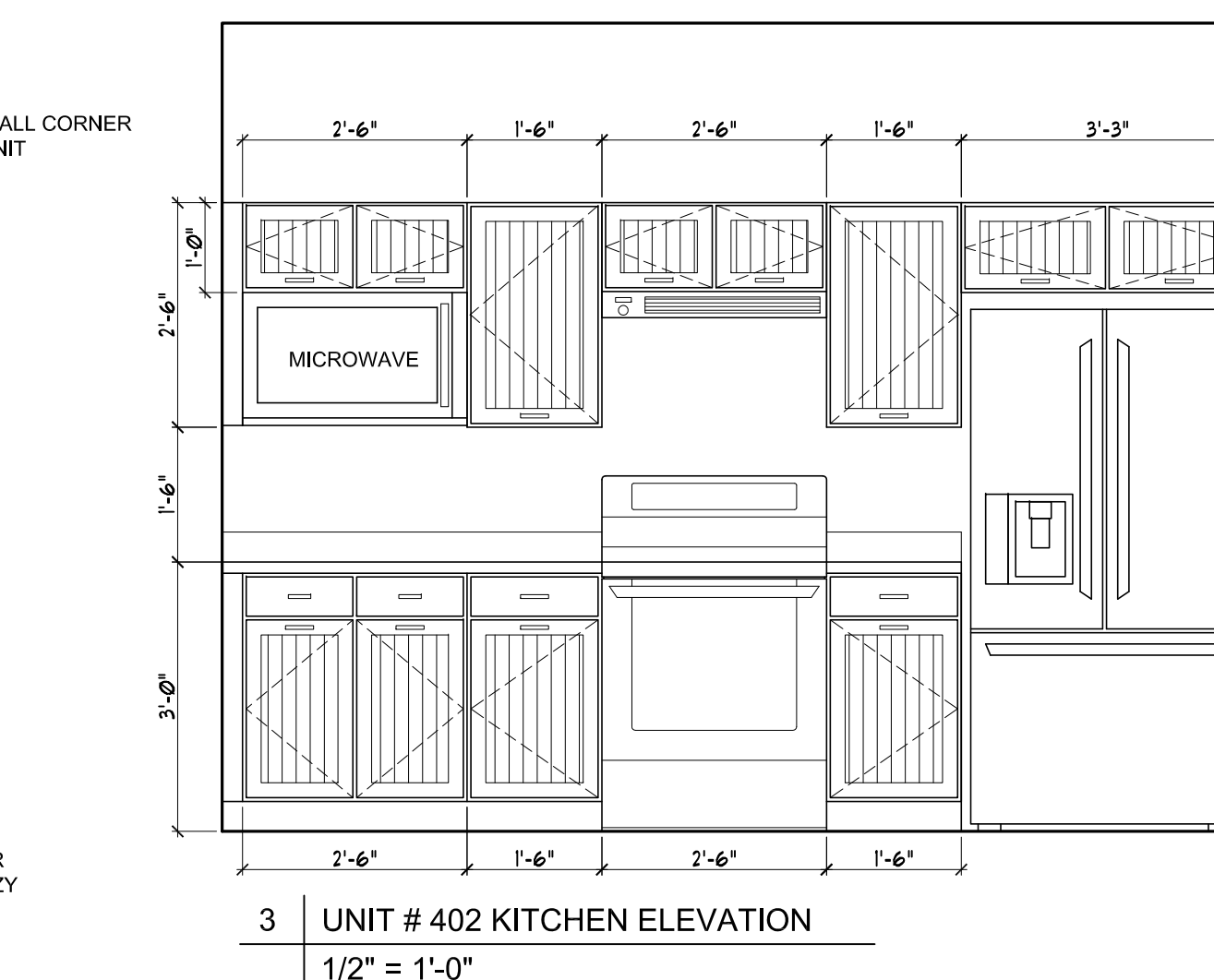


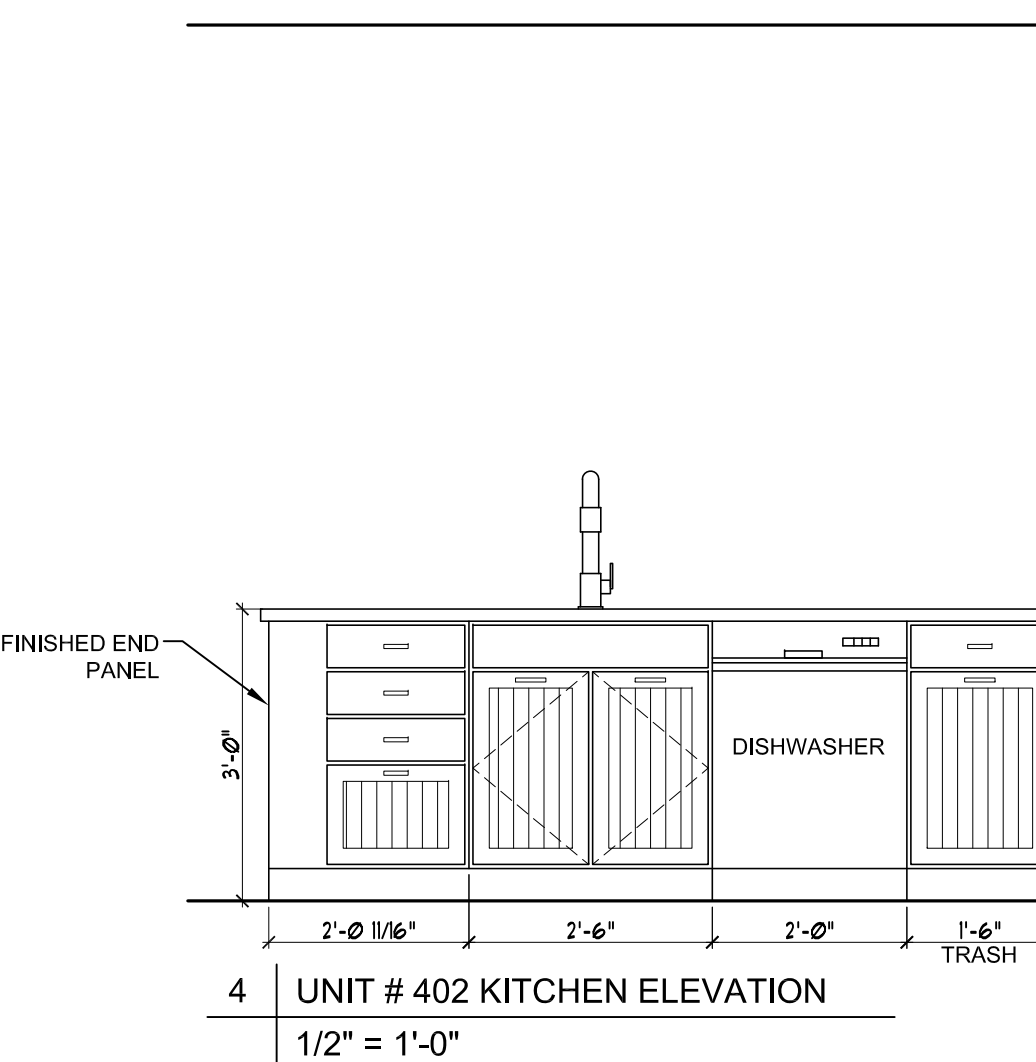
1 UNIT # 401 KITCHEN ELEVATION
1/2" = 1'-0"



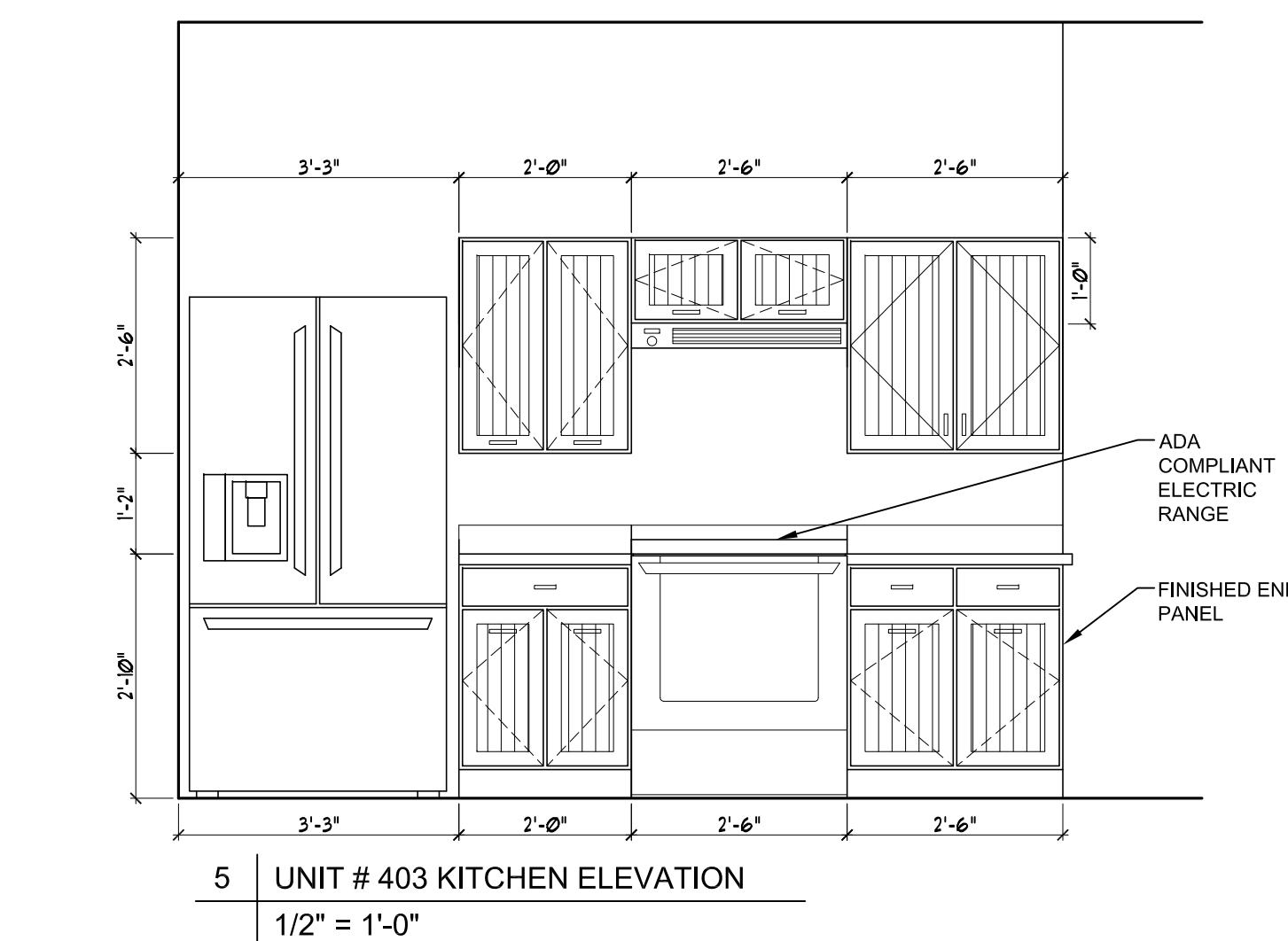
2 UNIT # 401 KITCHEN ELEVATION
1/2" = 1'-0"



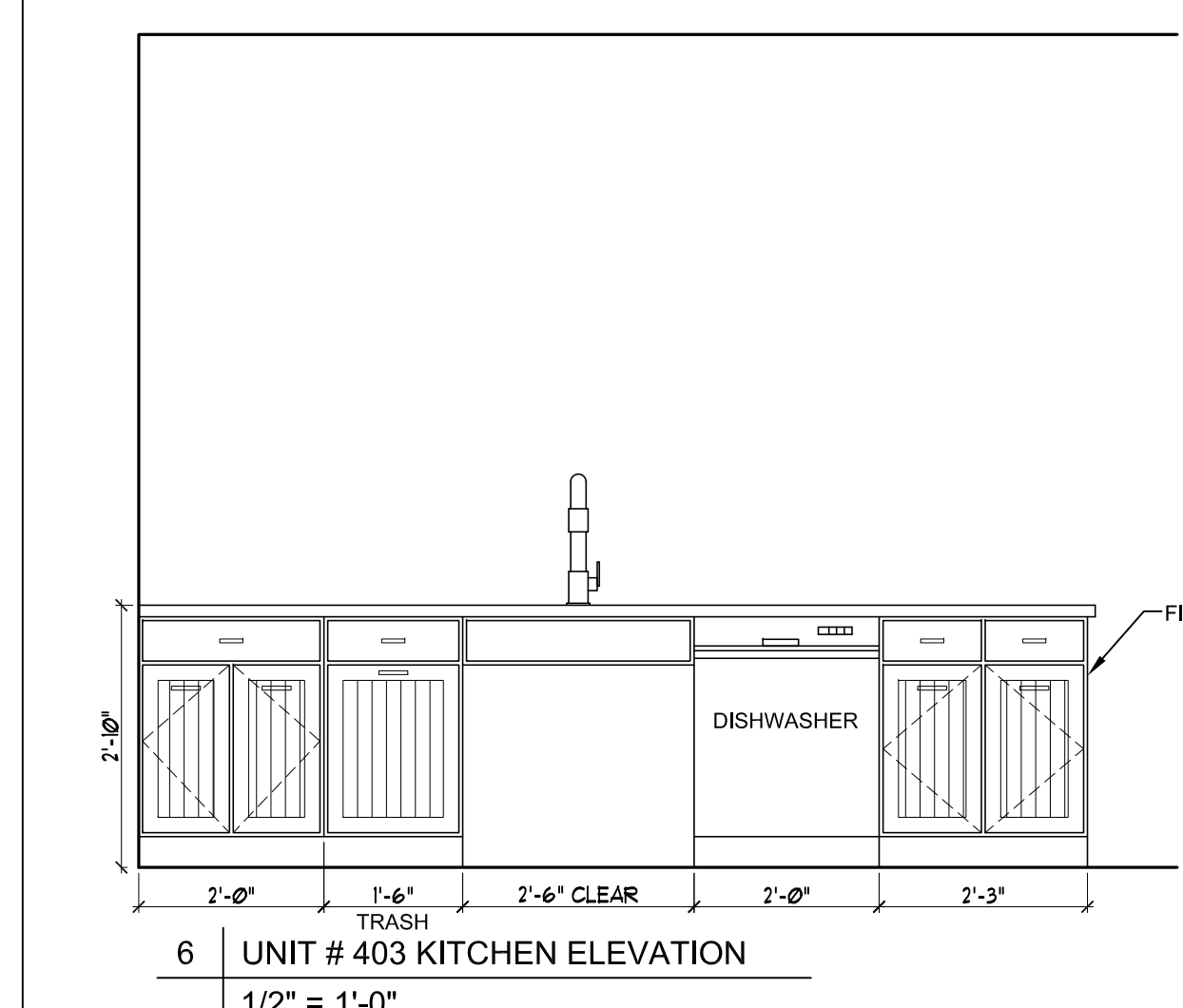
3 UNIT # 402 KITCHEN ELEVATION
1/2" = 1'-0"



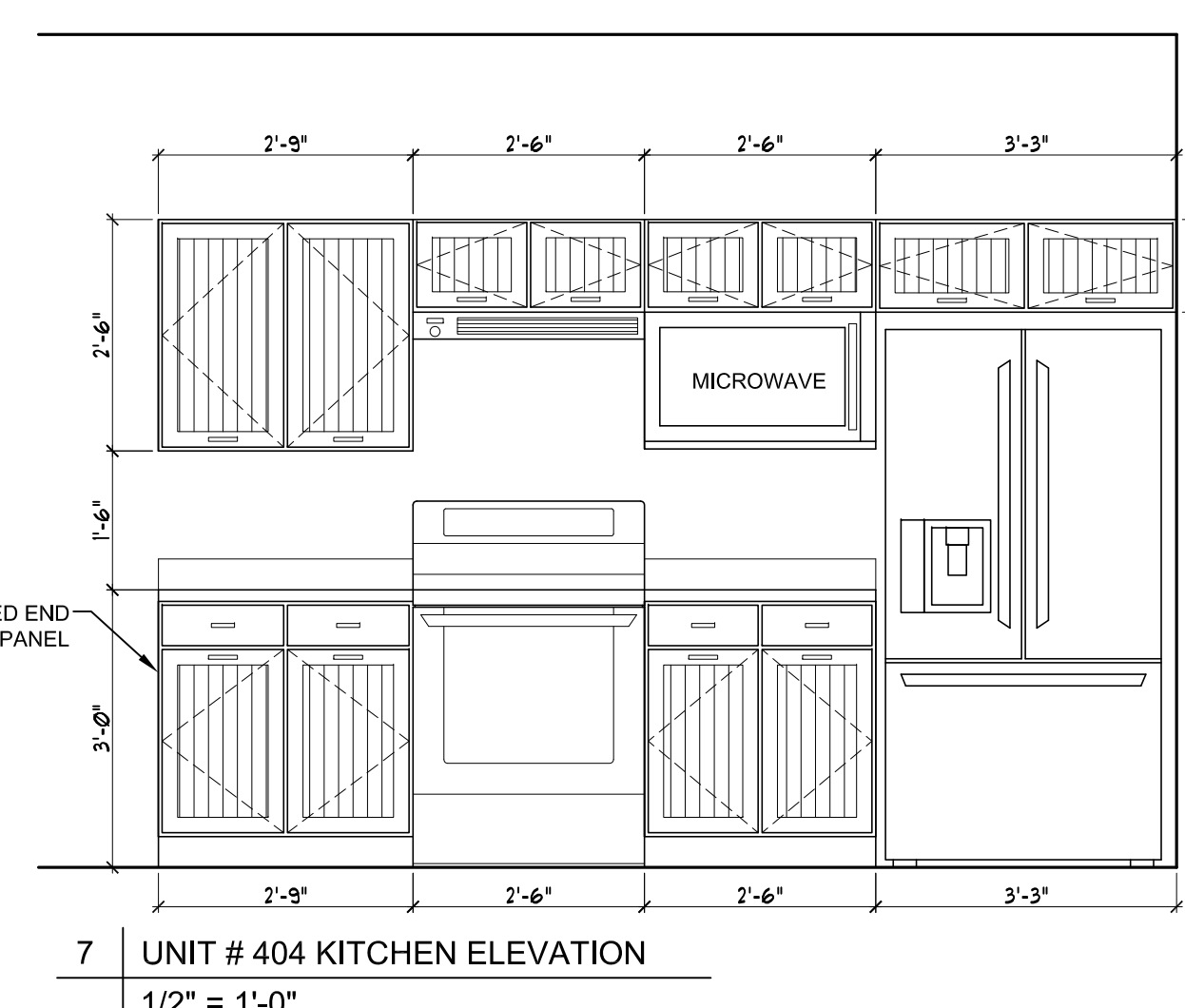
4 UNIT # 402 KITCHEN ELEVATION
1/2" = 1'-0"



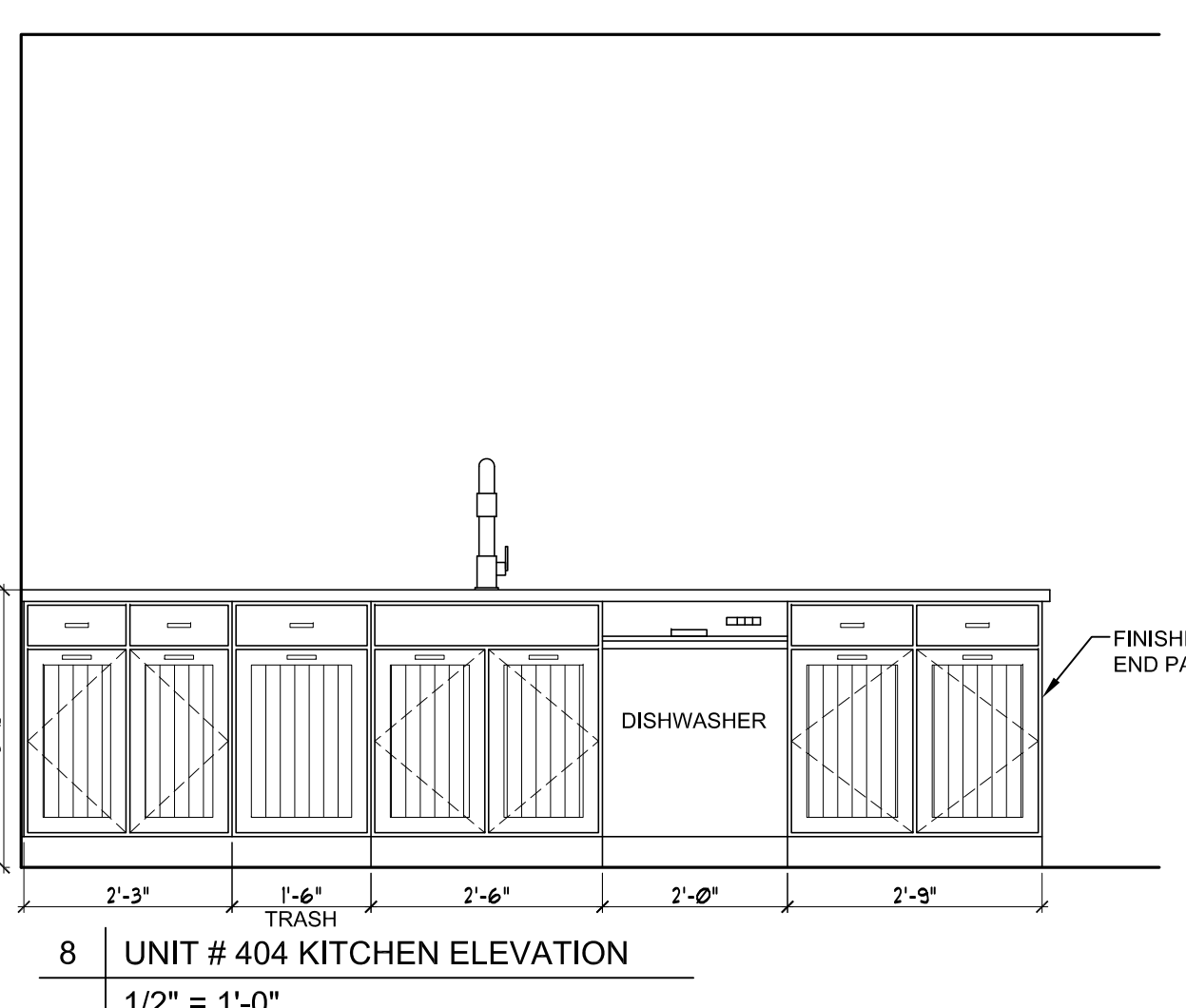
5 UNIT # 403 KITCHEN ELEVATION
1/2" = 1'-0"



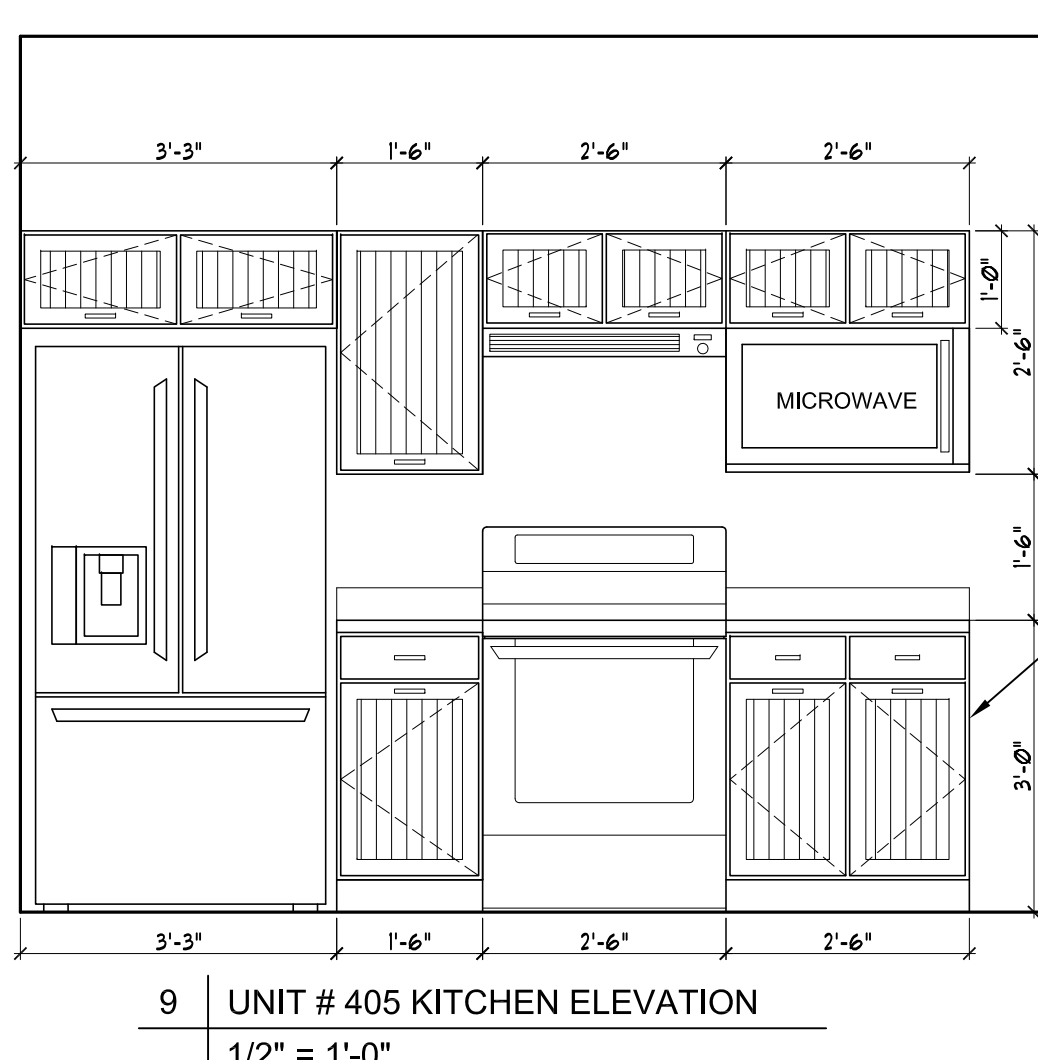
6 UNIT # 403 KITCHEN ELEVATION
1/2" = 1'-0"



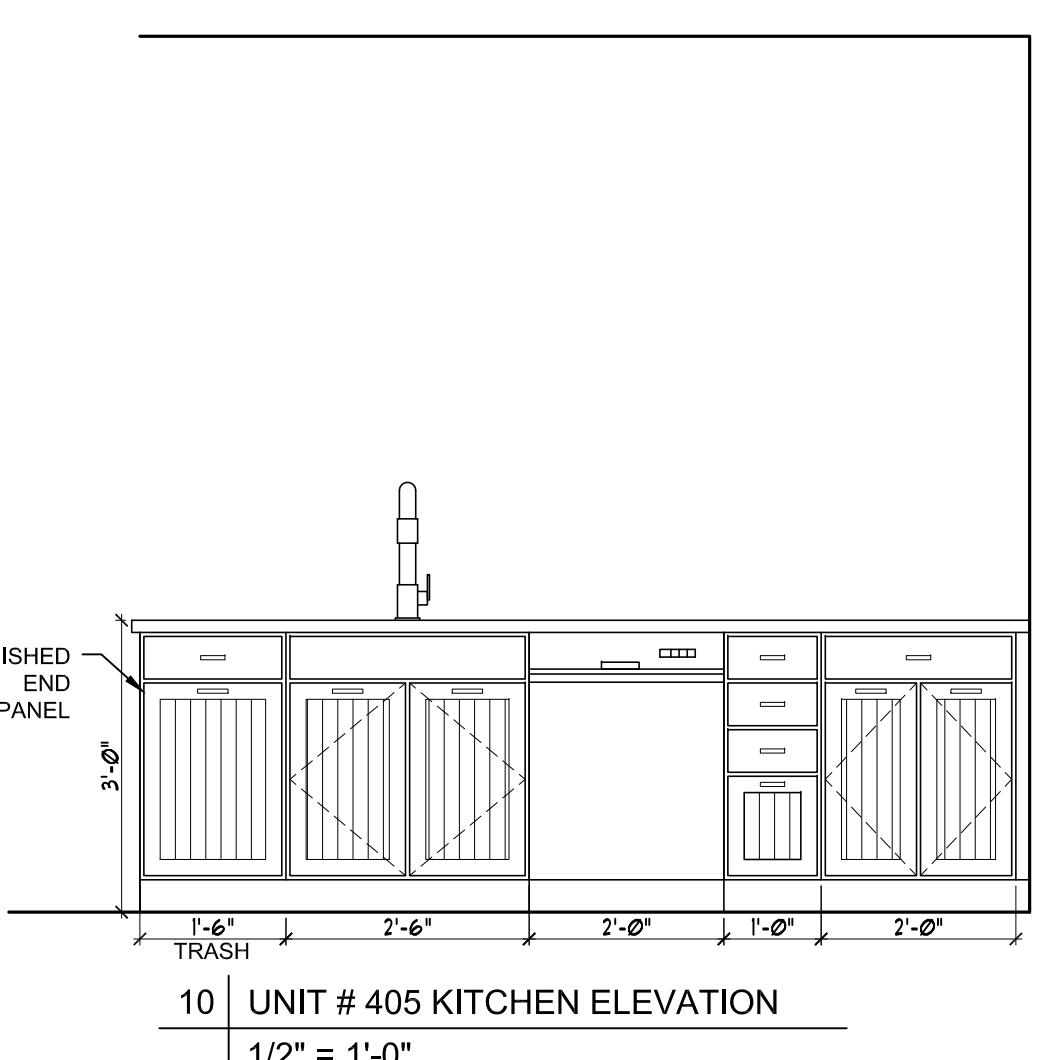
7 UNIT # 404 KITCHEN ELEVATION
1/2" = 1'-0"



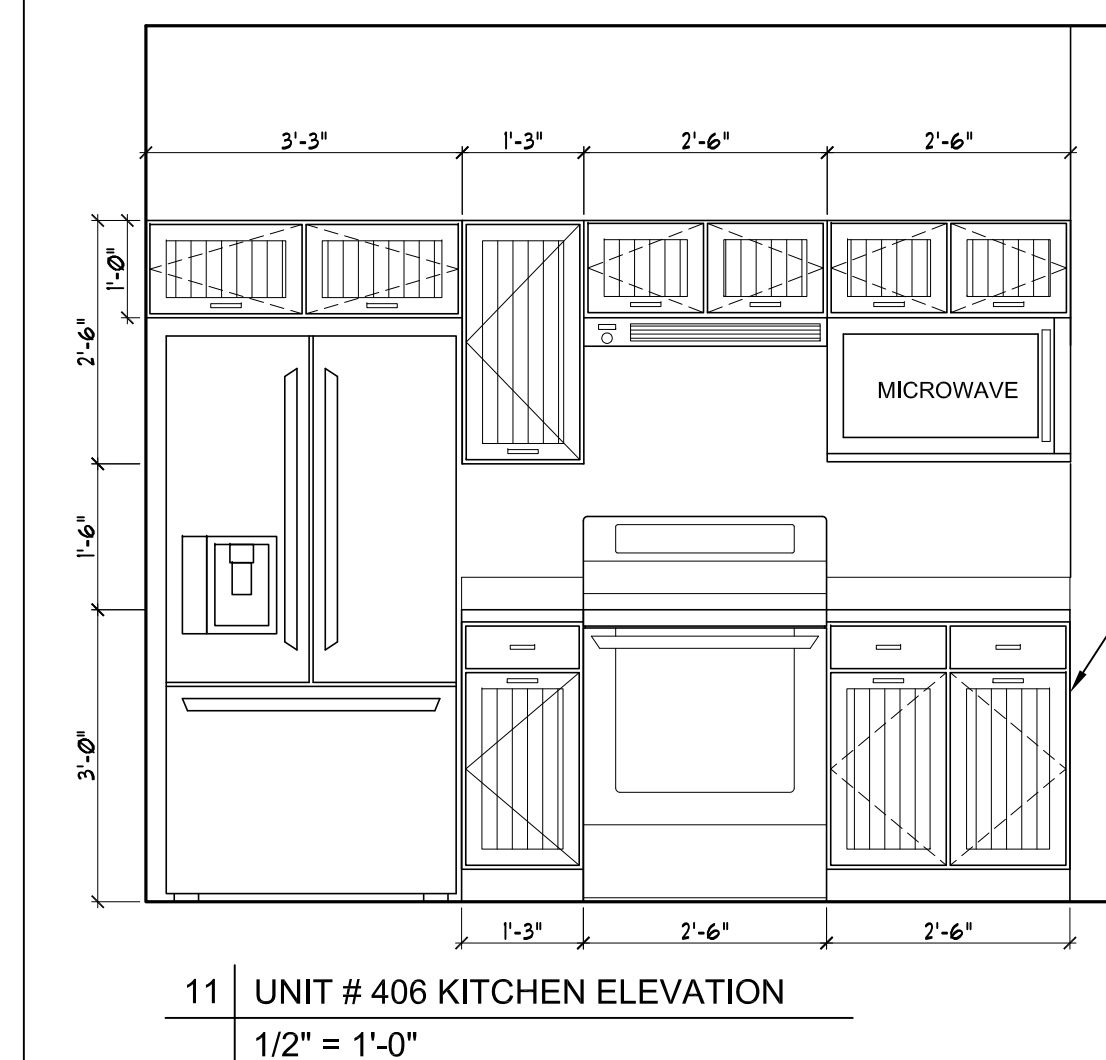
8 UNIT # 404 KITCHEN ELEVATION
1/2" = 1'-0"



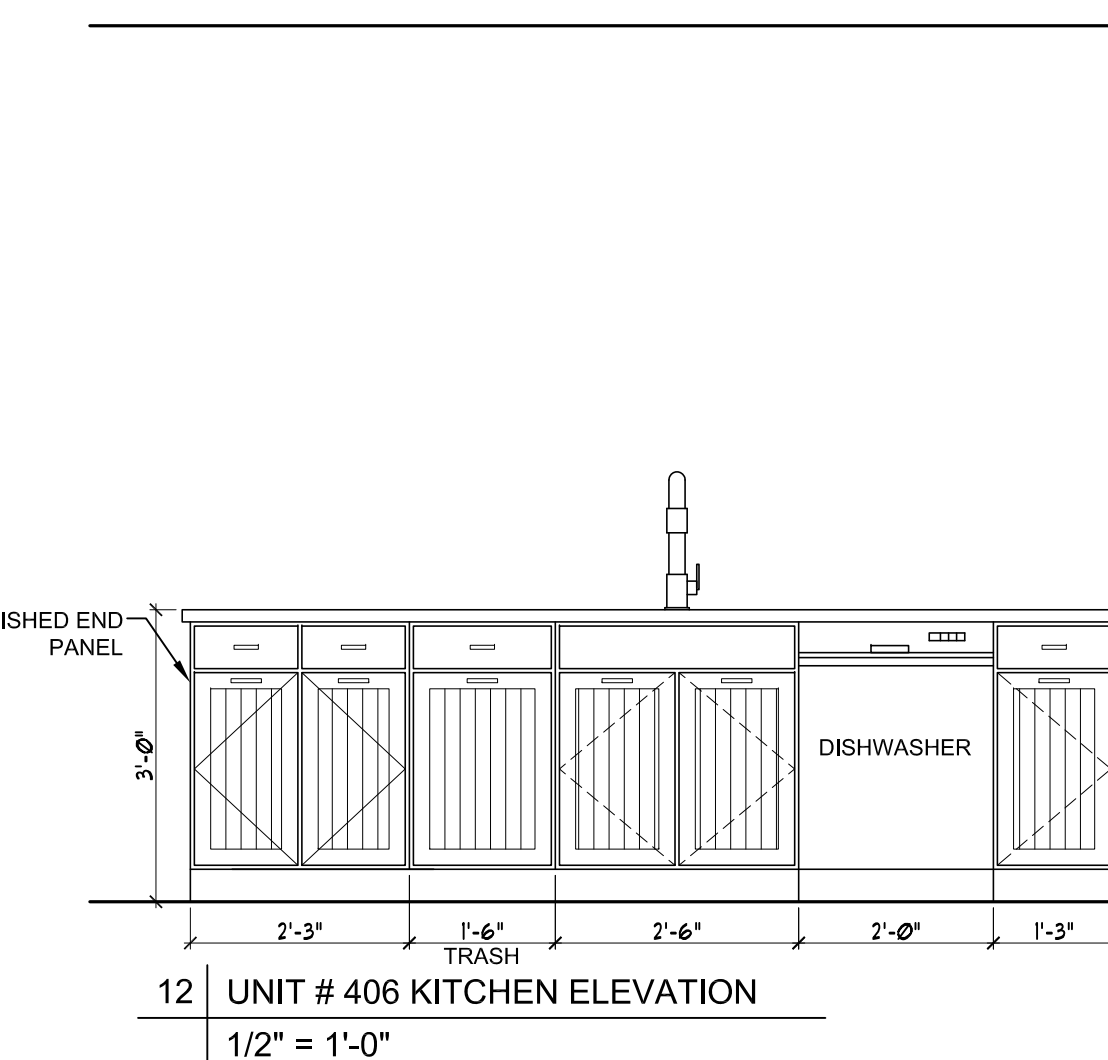
9 UNIT # 405 KITCHEN ELEVATION
1/2" = 1'-0"



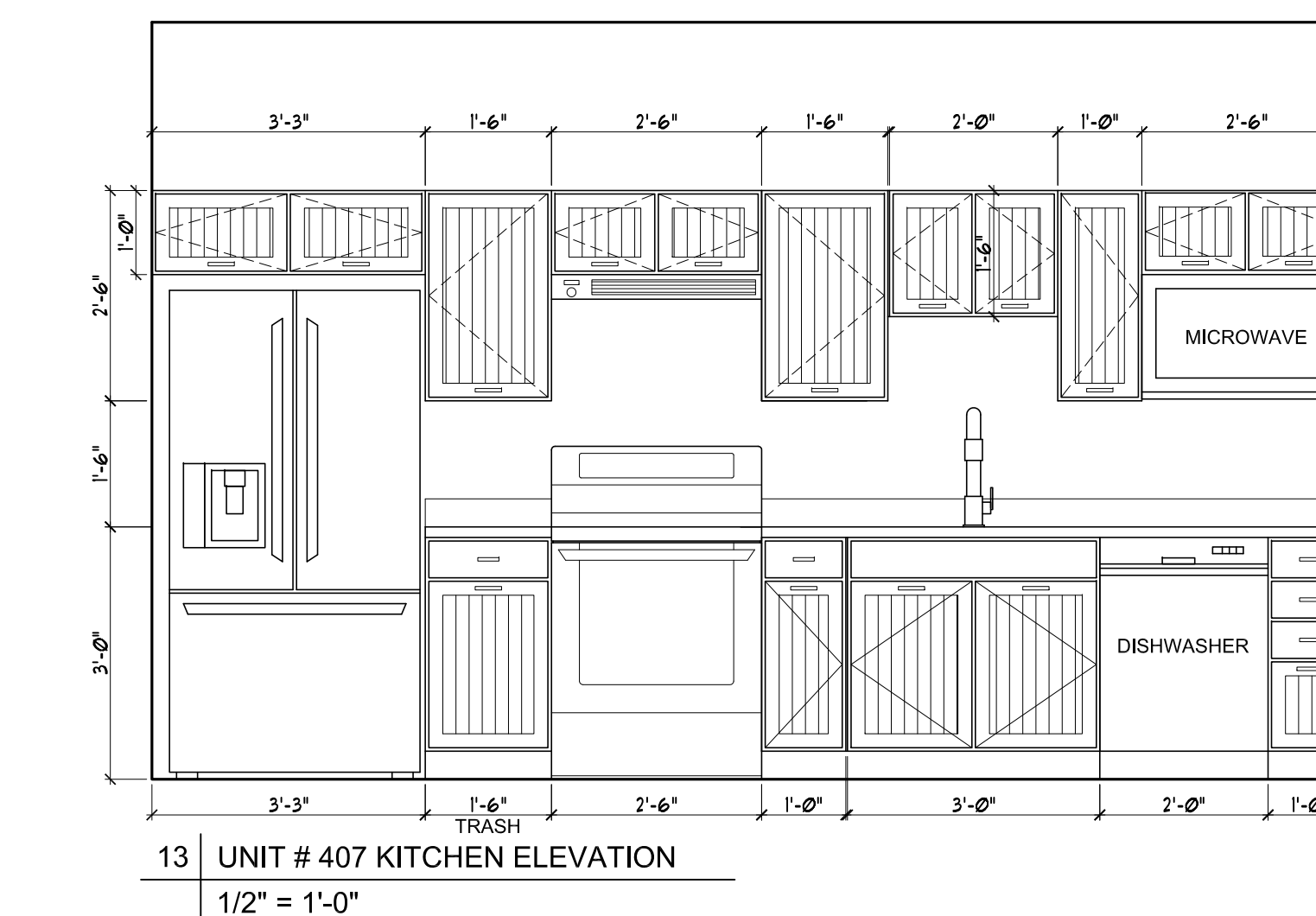
10 UNIT # 405 KITCHEN ELEVATION
1/2" = 1'-0"



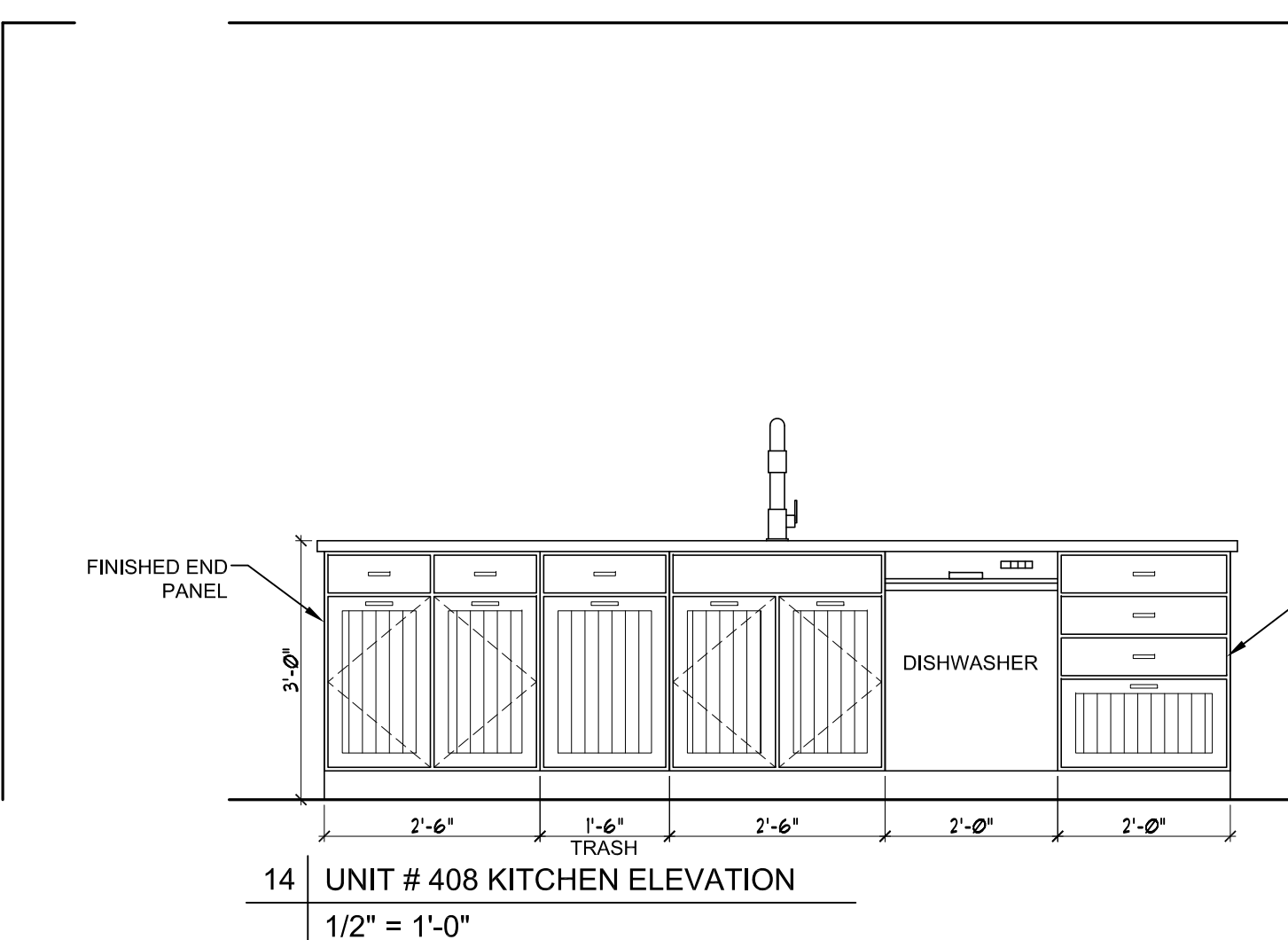
11 UNIT # 406 KITCHEN ELEVATION
1/2" = 1'-0"



12 UNIT # 406 KITCHEN ELEVATION
1/2" = 1'-0"

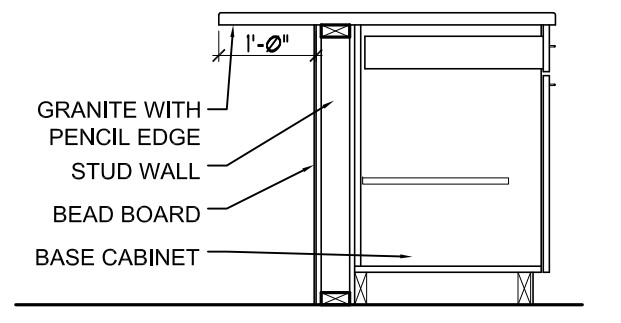


13 UNIT # 407 KITCHEN ELEVATION
1/2" = 1'-0"

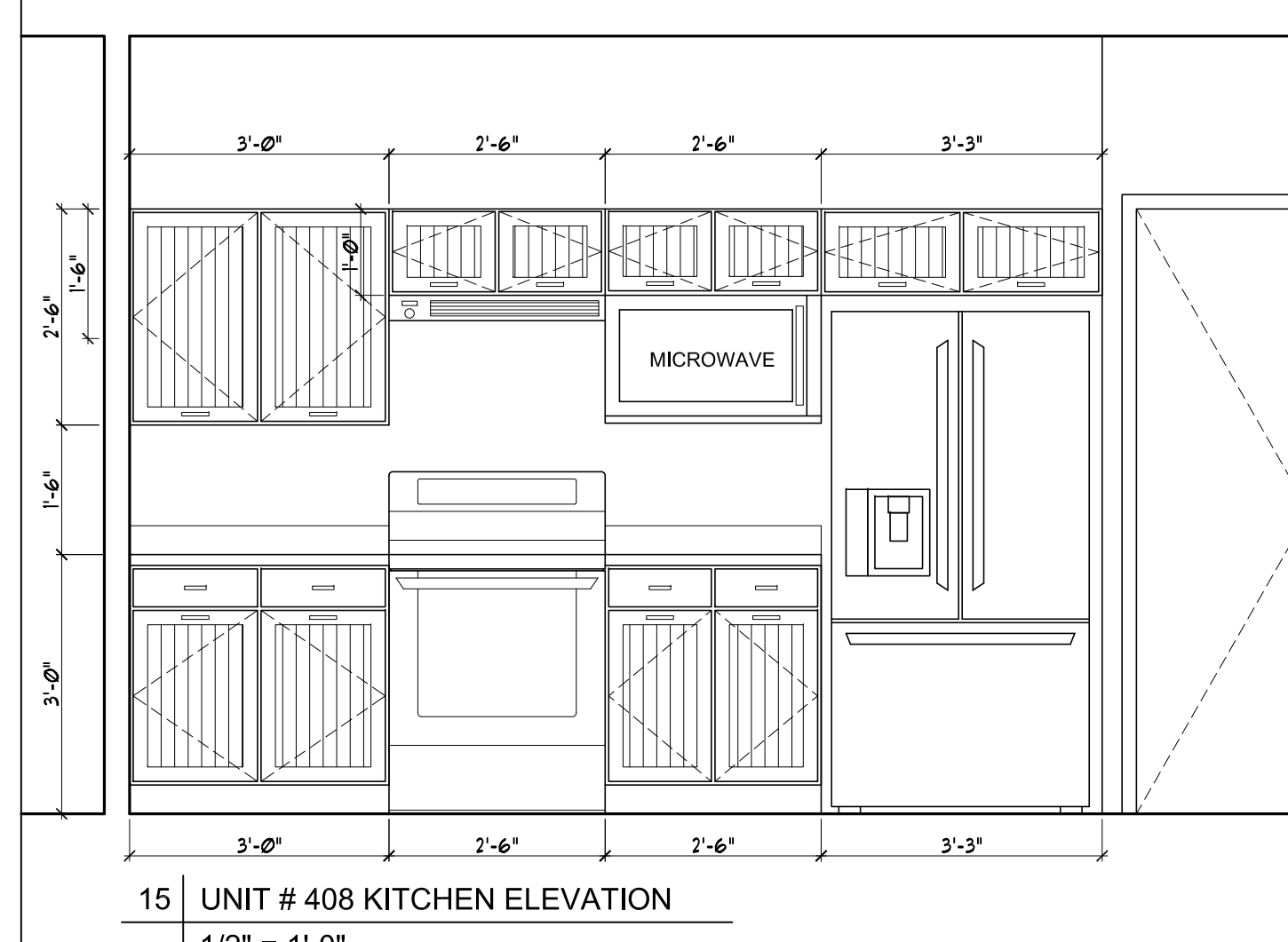


14 UNIT # 408 KITCHEN ELEVATION
1/2" = 1'-0"

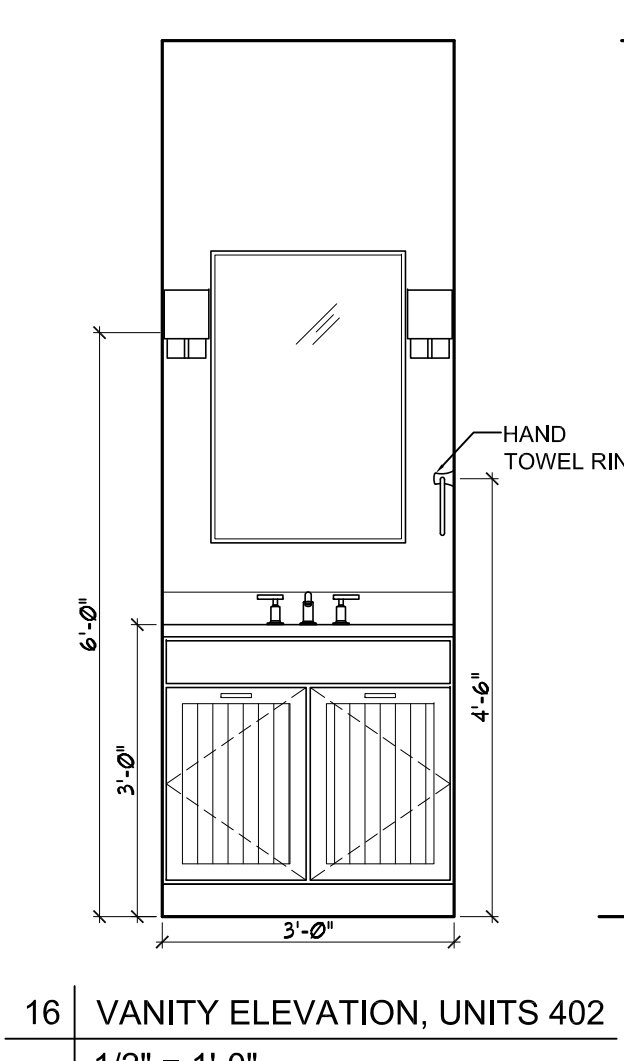
GENERAL NOTE: PROVIDE BLOCKING AT ALL BUILT-INS AS REQUIRED



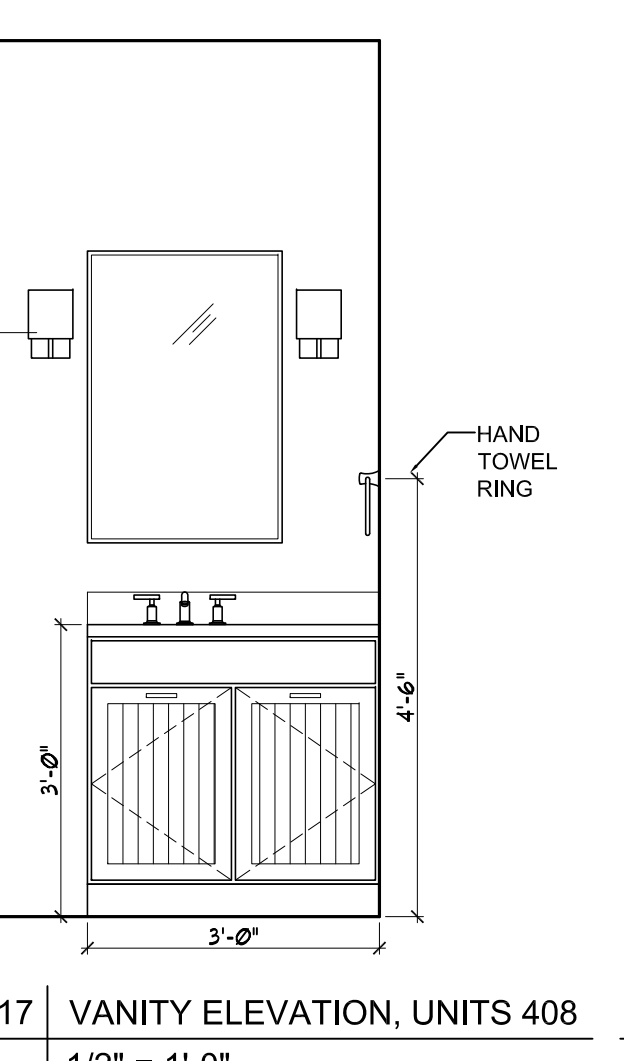
A TYPICAL DETAIL AT KITCHEN ISLAND
1/2" = 1'-0"



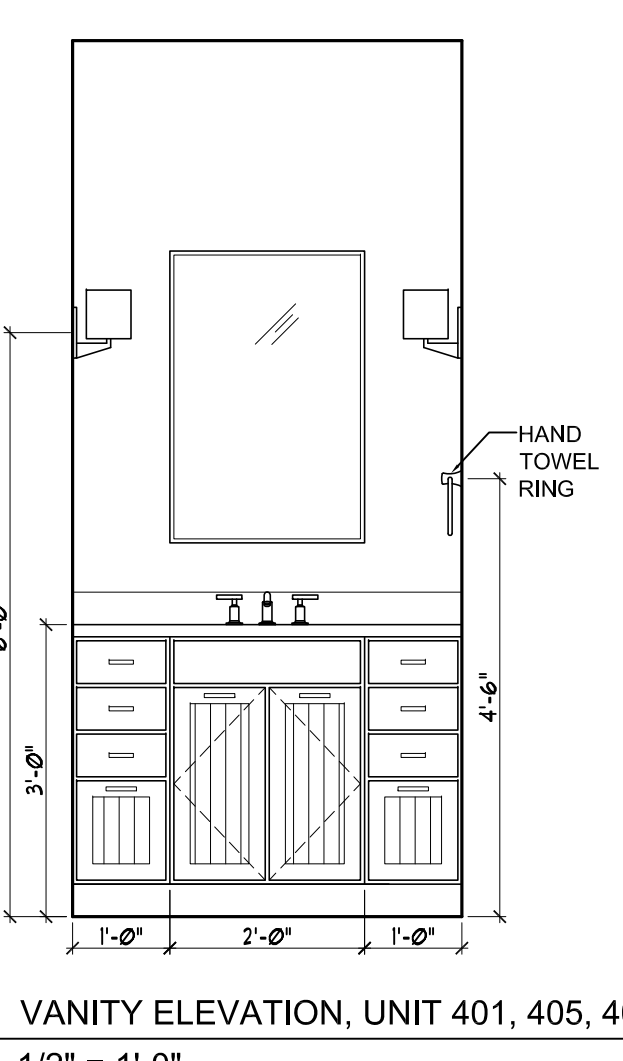
15 UNIT # 408 KITCHEN ELEVATION
1/2" = 1'-0"



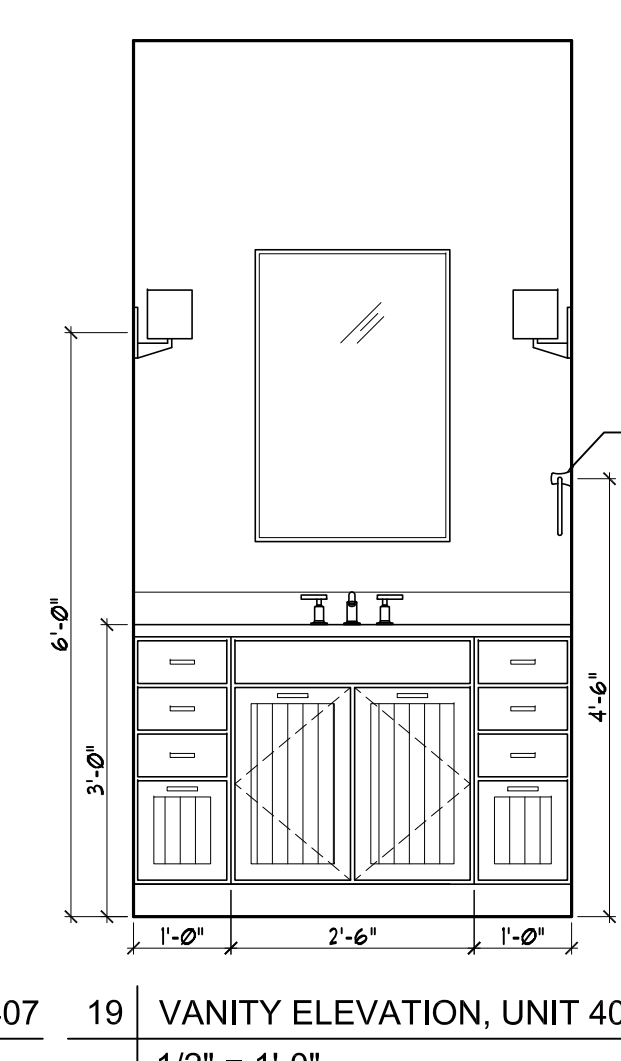
16 VANITY ELEVATION, UNITS 402
1/2" = 1'-0"



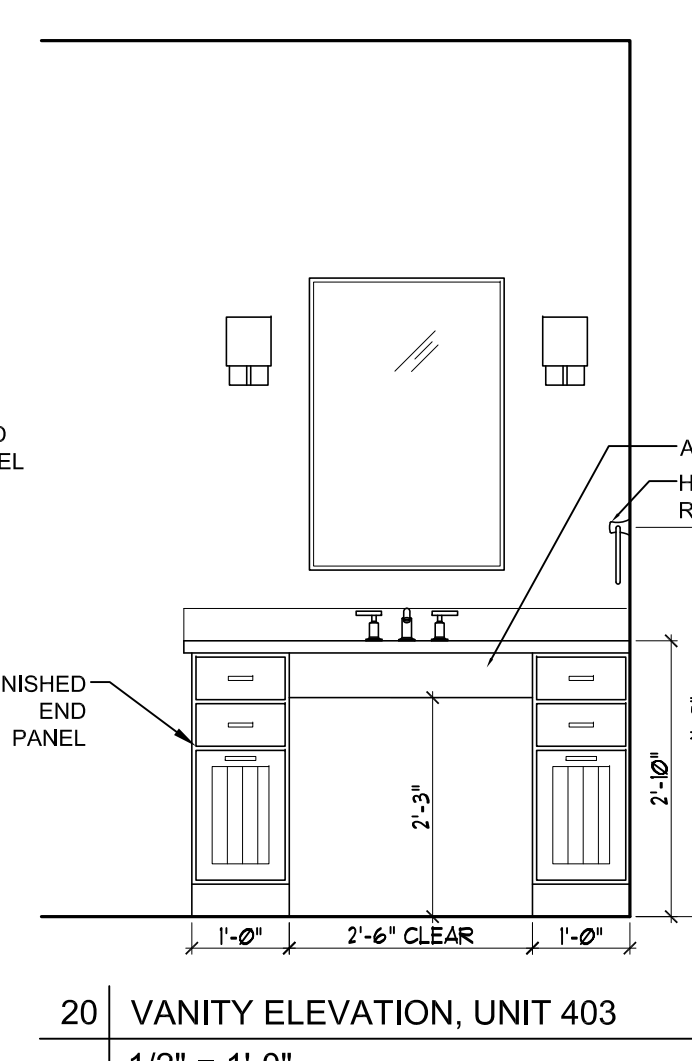
17 VANITY ELEVATION, UNITS 408
1/2" = 1'-0"



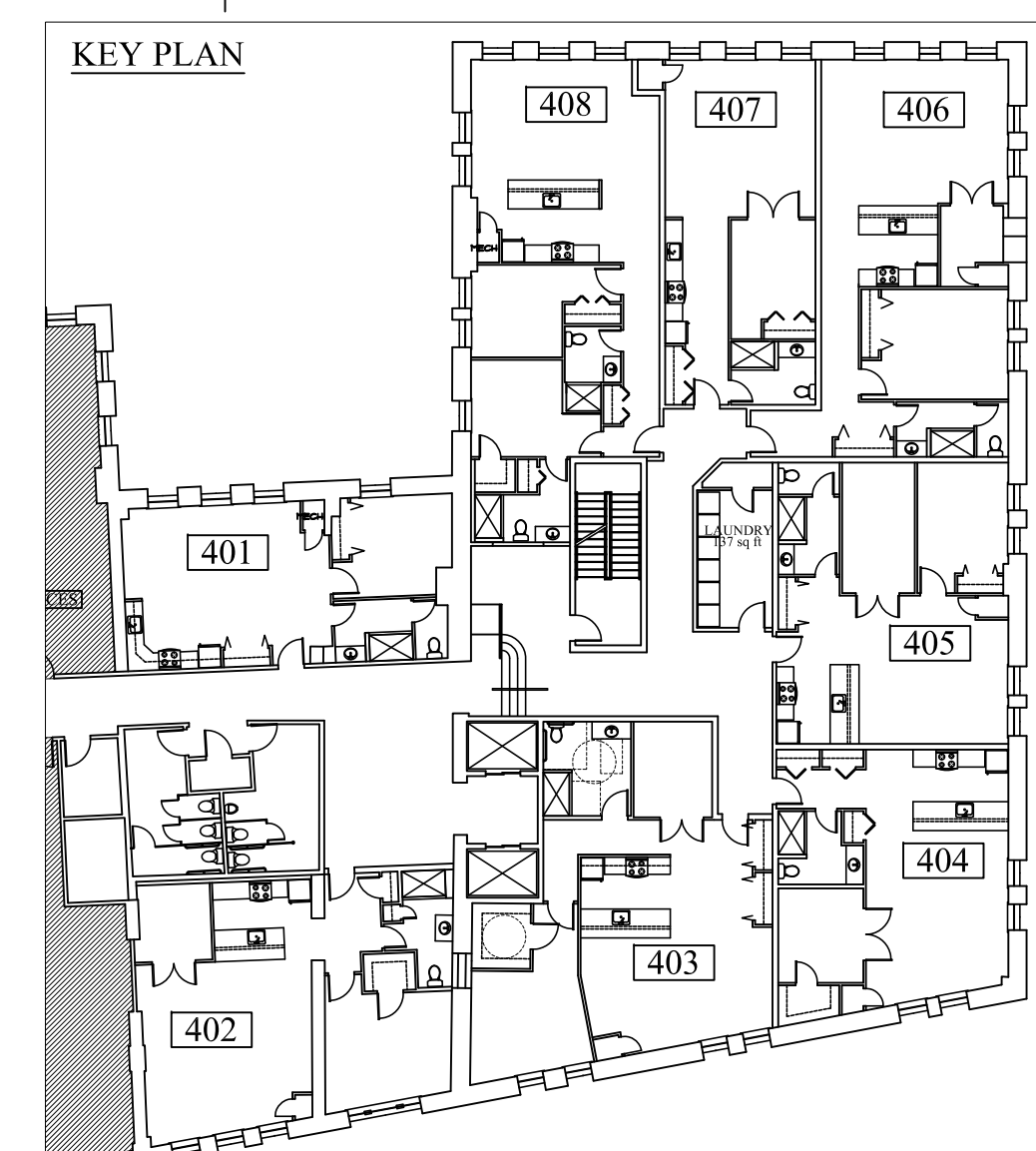
18 VANITY ELEVATION, UNIT 401, 405, 406, 407
1/2" = 1'-0"



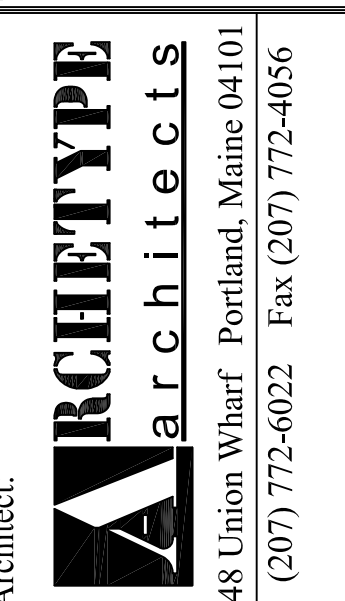
19 VANITY ELEVATION, UNIT 404
1/2" = 1'-0"



20 VANITY ELEVATION, UNIT 403
1/2" = 1'-0"



Owner:
Consulting Engineer:
Architect:
Project:
Revisions:



J.B. BROWN BUILDING
537 CONGRESS STREET
PORTLAND, ME

Date:
22 November 2011

Scale:
1/2" = 1'-0"

INTERIOR ELEVATIONS

A4