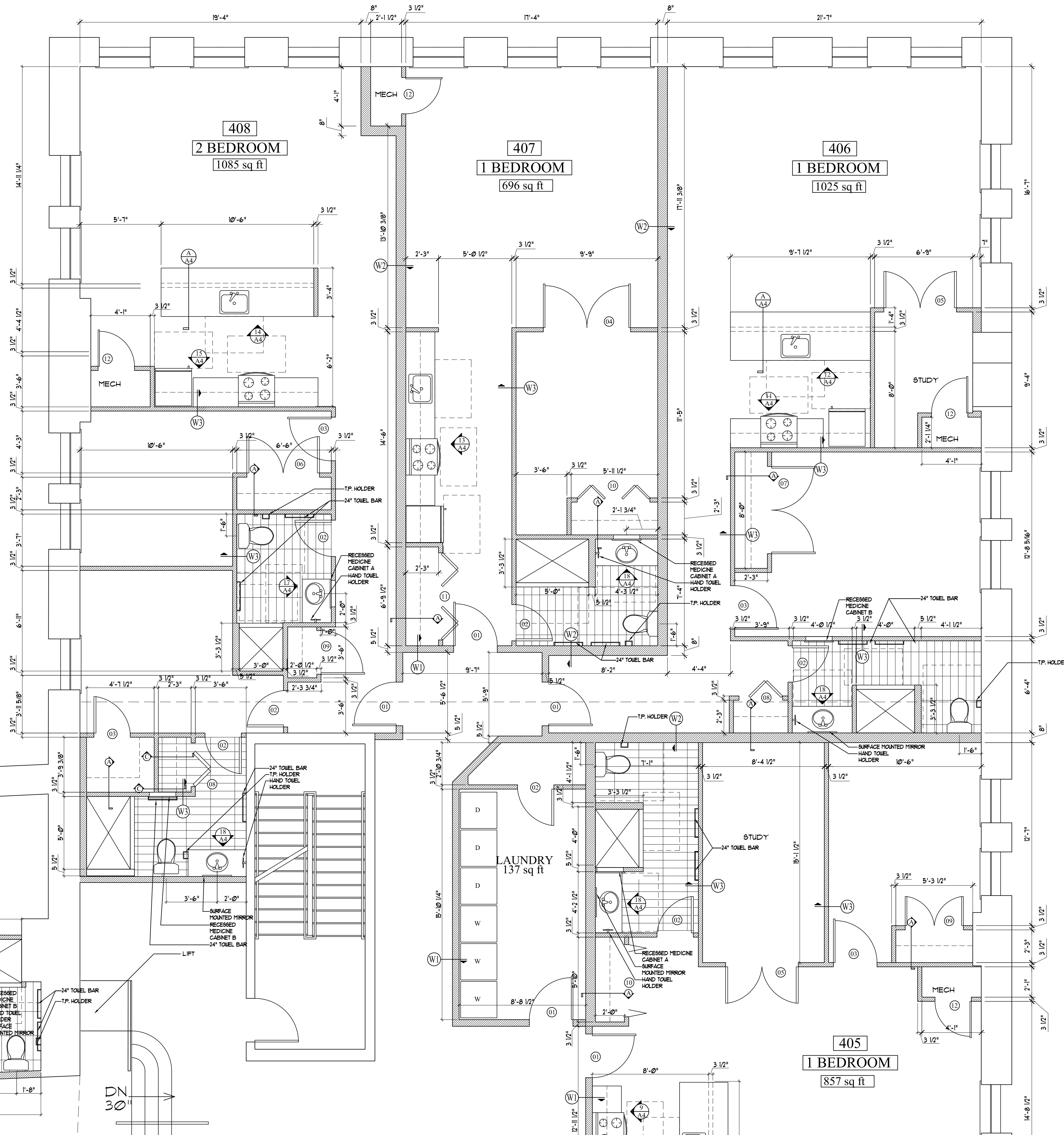


NOTES
 -Provide Robe hook at back of each bathroom door- Center on door and mount 5'-0" AFF.
 -Provide 2 at Accessible room #403 one at 6'-0" AFF, one at 48" AFF.

Provide blocking at all T.P. Holders (2'-0" AFF), towel bars (48" AFF) and hand towel holders (54" AFF.)



Owner:

Consulting Engineer:

ARCHETYPE architects
 48 Union Wharf Portland, Maine 04101
 (207) 772-6022 Fax (207) 772-4056

Architect:

J.B. BROWN BUILDING
 537 CONGRESS STREET
 PORTLAND, ME

Project:

Revisions:

Date: 22 November 2011
 Scale: 1/4" = 1'-0"

ENLARGED
FOURTH FLOOR PLAN

A1.1